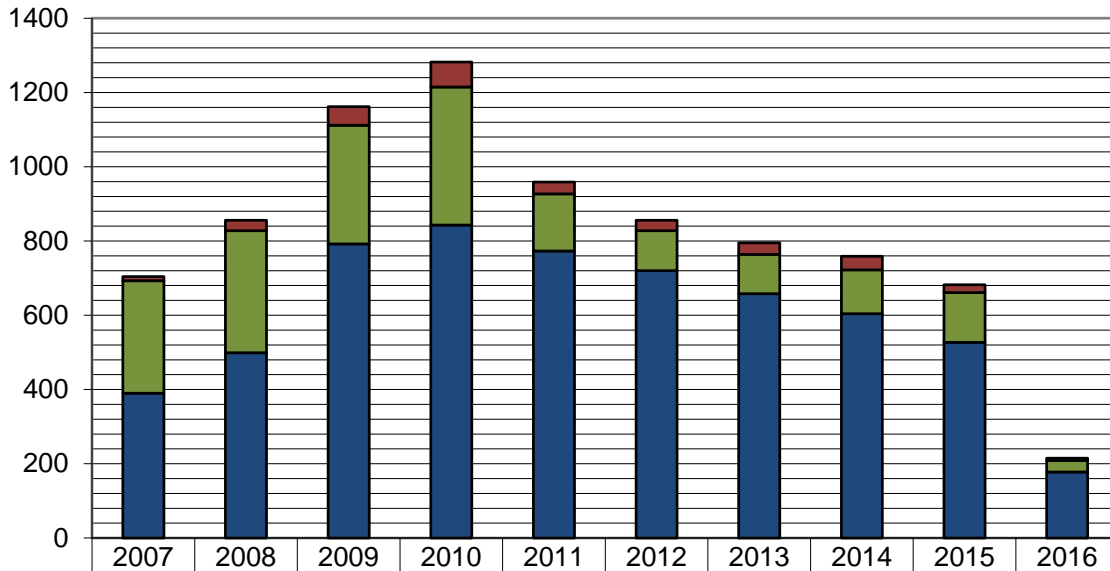


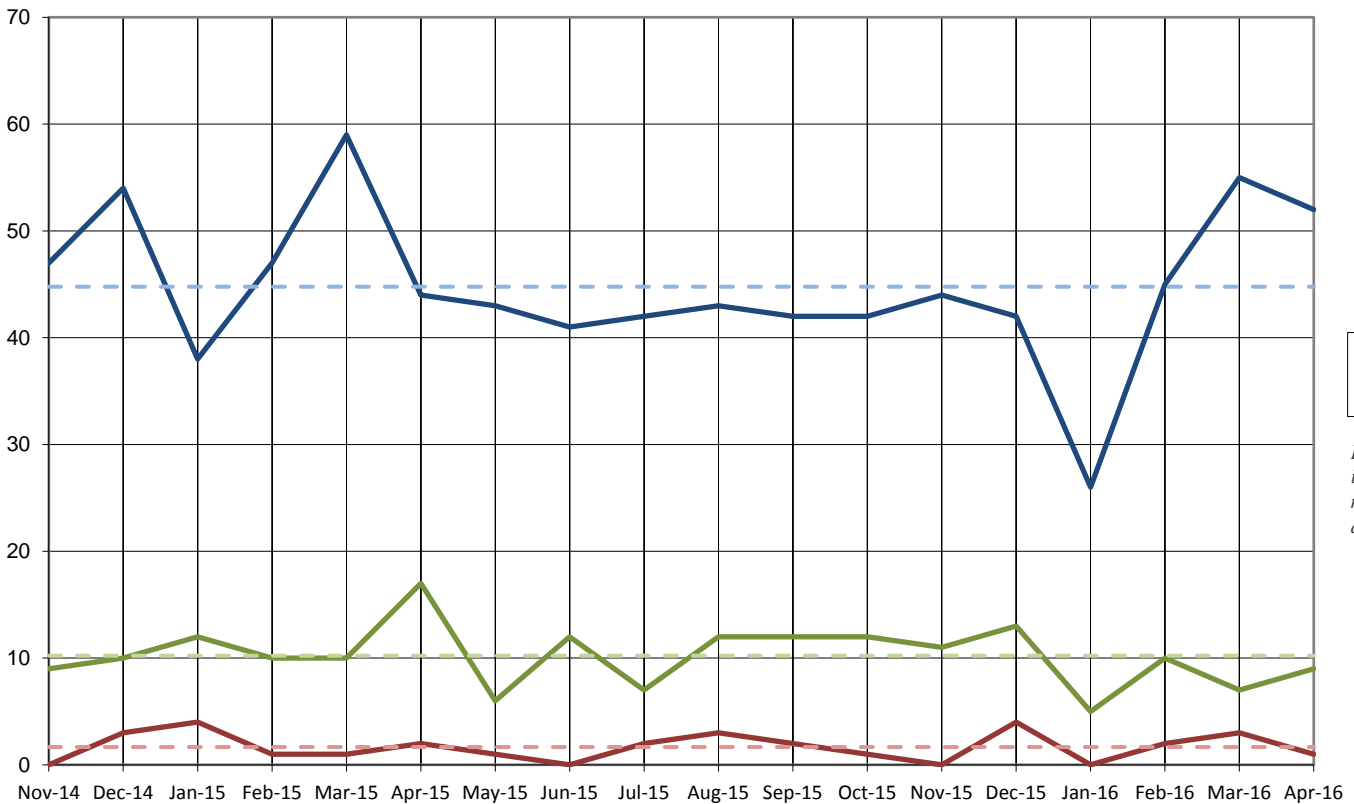
Total Cases Filed per Year



- Chapter 11
- Chapter 13
- Chapter 7

	2007	2008	2009	2010	2011	2012	2013	2014	2015	2016
■ Chapter 11	11	28	50	67	32	28	31	37	21	6
■ Chapter 13	303	329	320	372	154	108	106	118	134	31
■ Chapter 7	390	499	792	843	773	720	658	604	527	178
Total	704	856	1162	1282	959	856	795	759	682	215

Cases Filed Per Month by Chapter - 18 months



- 7
- 13
- 11

Dashed lines indicate 18-month average

Pro Se Filings through April 2016

	Total	Pro Se
Ch. 7	178	38
Ch. 13	31	11
Ch. 11	6	0

