

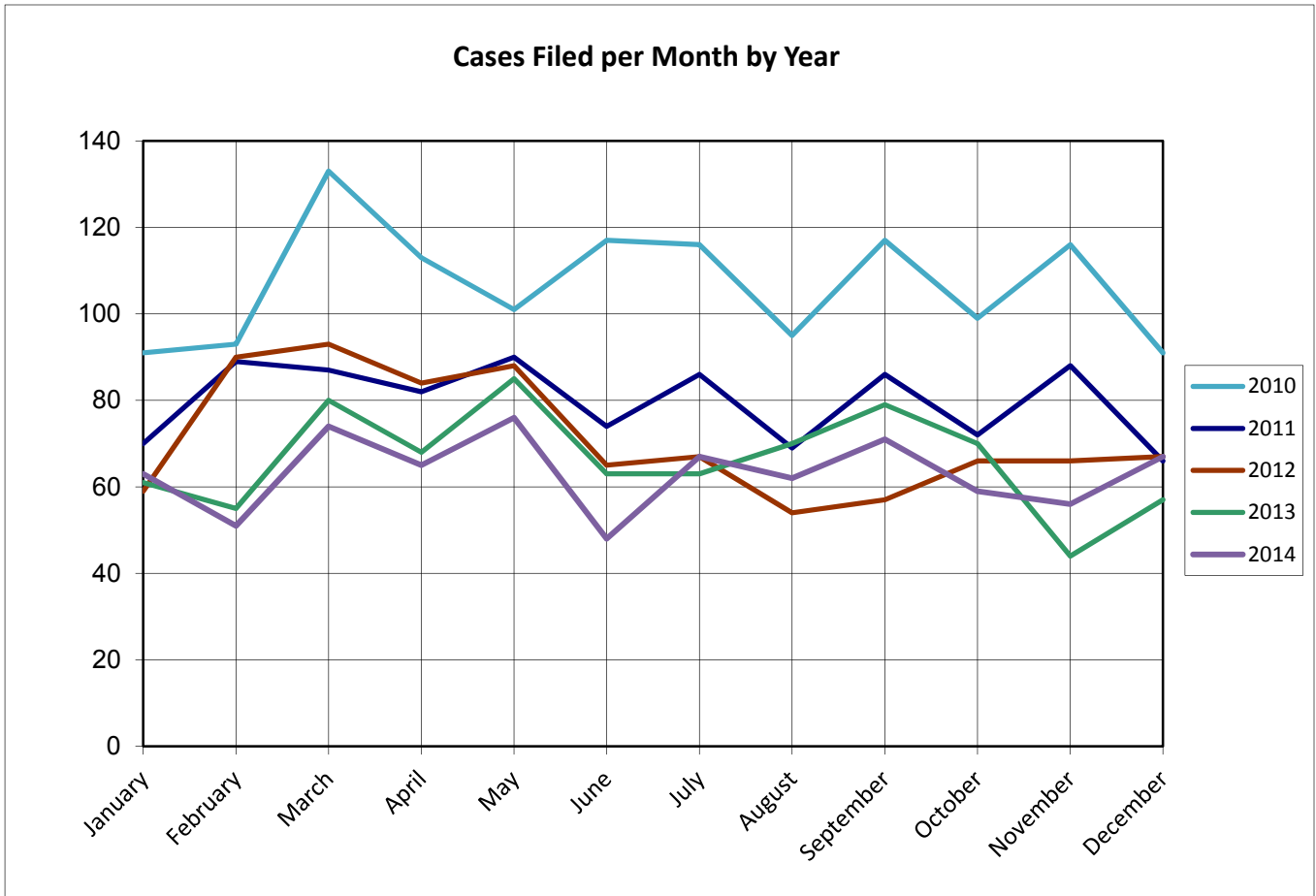
# United States Bankruptcy Court for the District of Columbia

## Report on Bankruptcy Case Filings December 2014

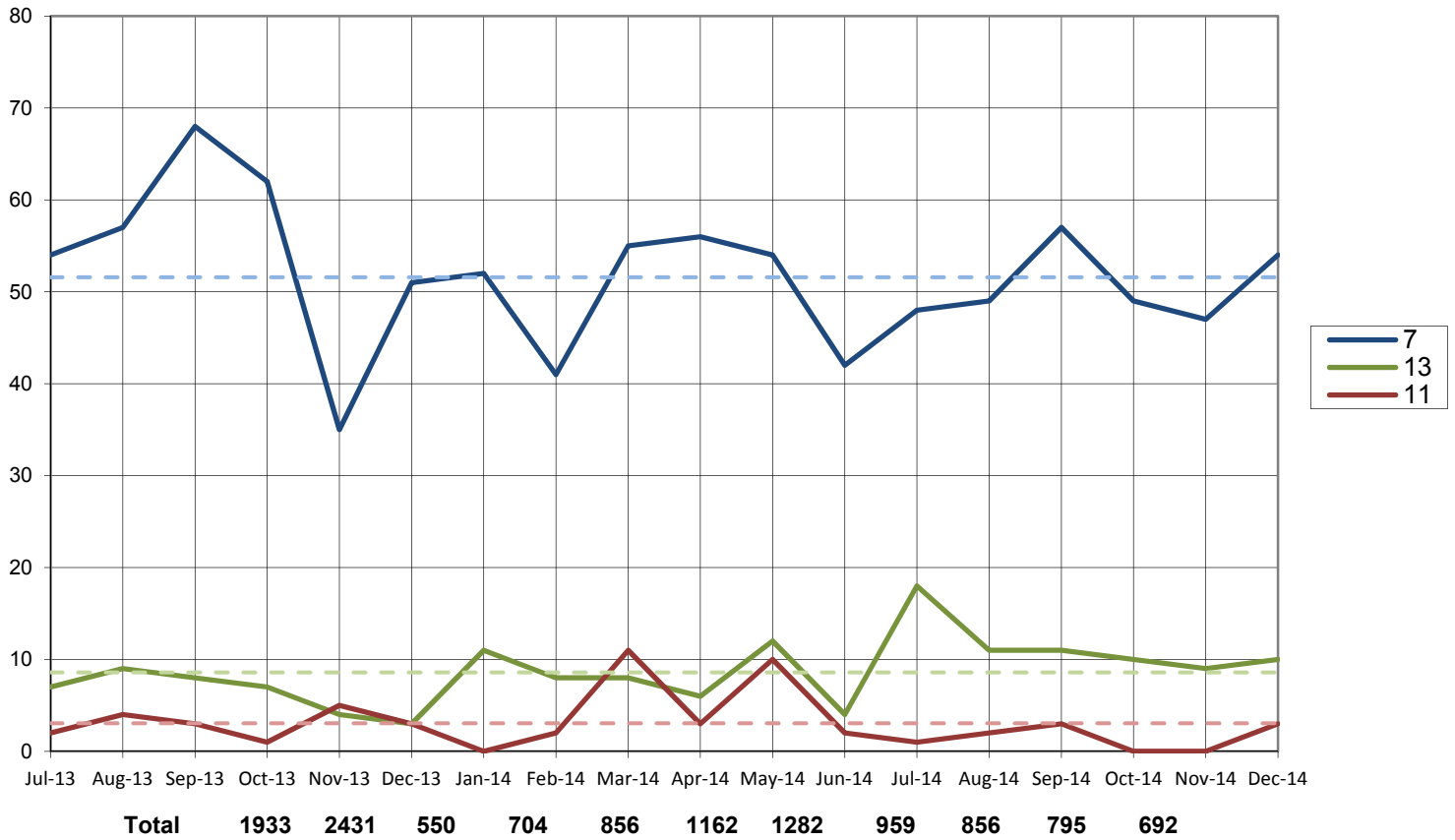
	Month Total	Year Total	2013 Total
Ch. 7	54	604	658 (-54)
Ch. 13	10	118	106 (+12)
Ch. 11	3	37	31 (+6)
	67	759	795 (-36)

As of December 31, 2014

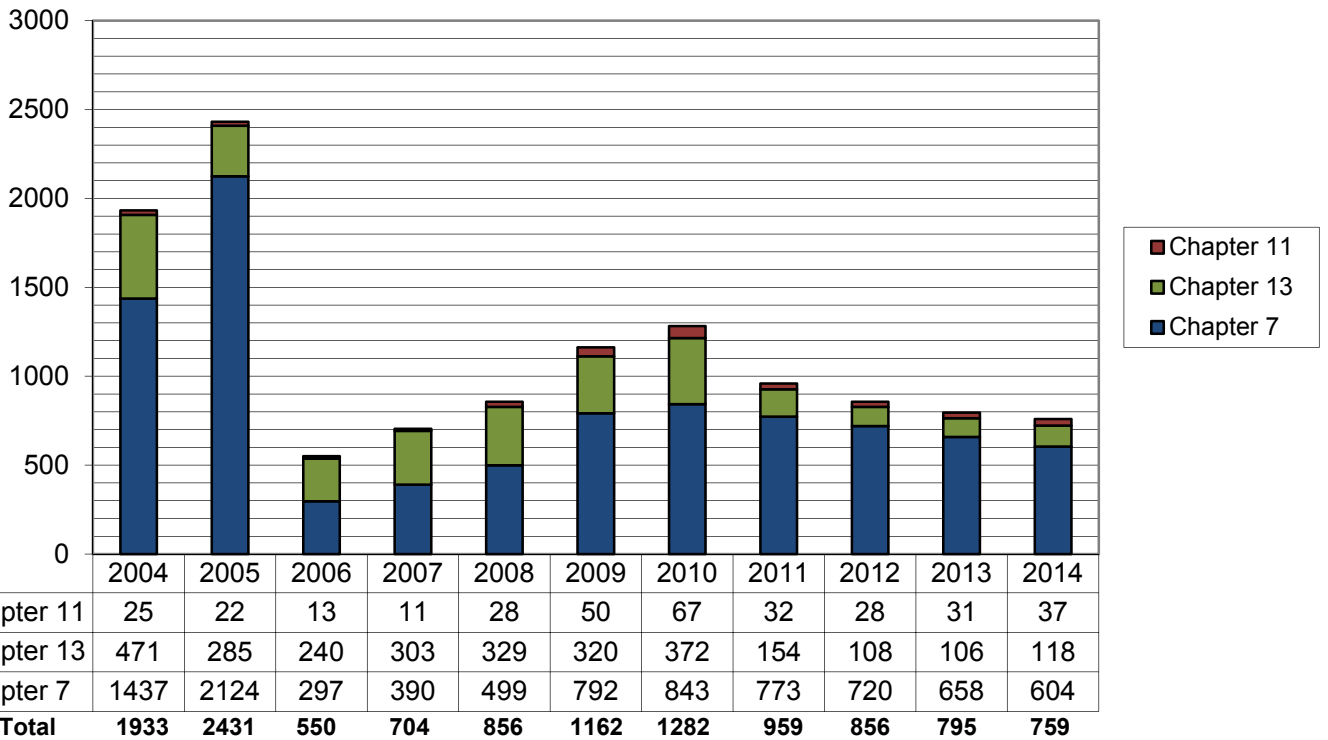
- ◆ The total cases for 2014 is **759**
- ◆ Compared to 2013, filings decreased by **4.6%**
- ◆ An average of **2.1** cases were filed each day



Cases Filed Per Month by Chapter - 18 months



Total Cases Filed per Year



### Pro Se Filings December 2014

	Total	Pro Se
Ch. 7	604	154
Ch. 13	90	28
Ch. 11	37	2

