

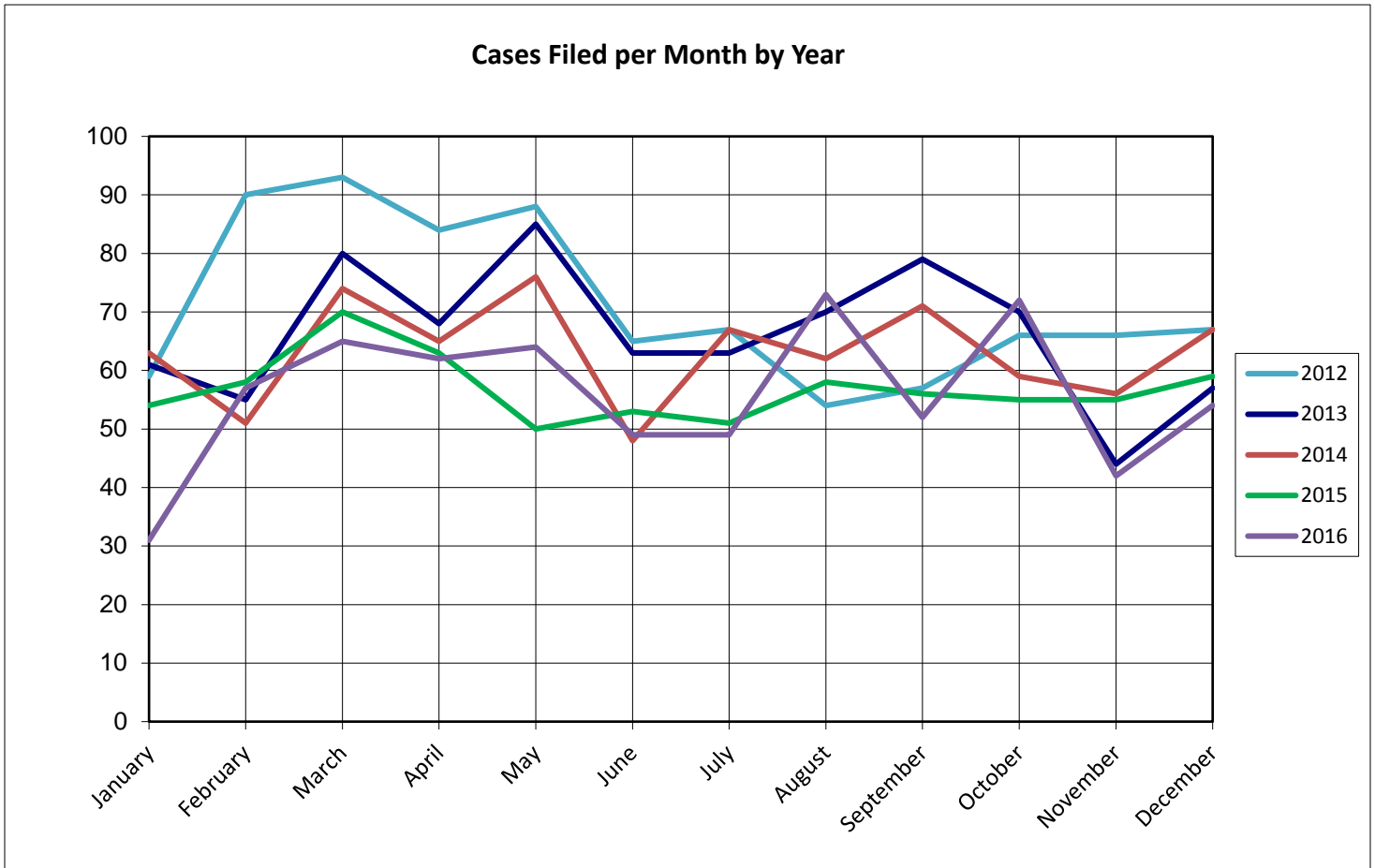
United States Bankruptcy Court for the District of Columbia

Report on Bankruptcy Case Filings December 2016

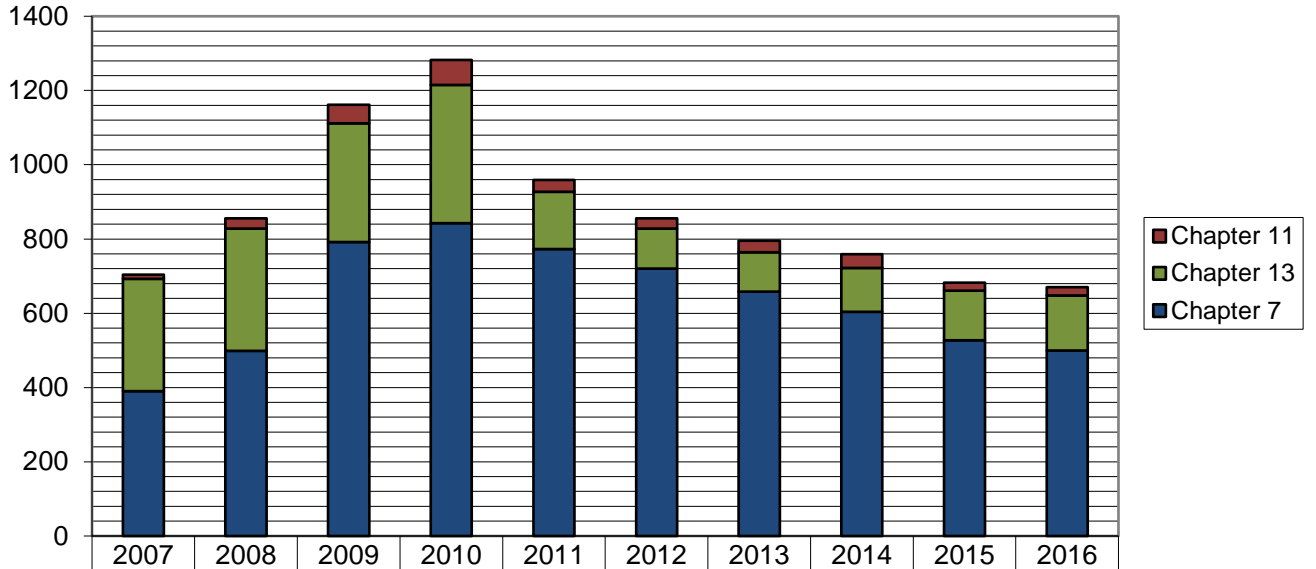
	Month Total	2016 Total	2015 YTD Total
Ch. 7	38	500	527 (-27)
Ch. 13	16	148	134 (+14)
Ch. 11	0	22	21 (+1)
	54	670	623 (-12)

As of December 31, 2016:

- ◆ The total cases for 2016 is **670**
- ◆ Compared to 2015, filings decreased by **1.8%**
- ◆ An average of **1.8** cases were filed each day

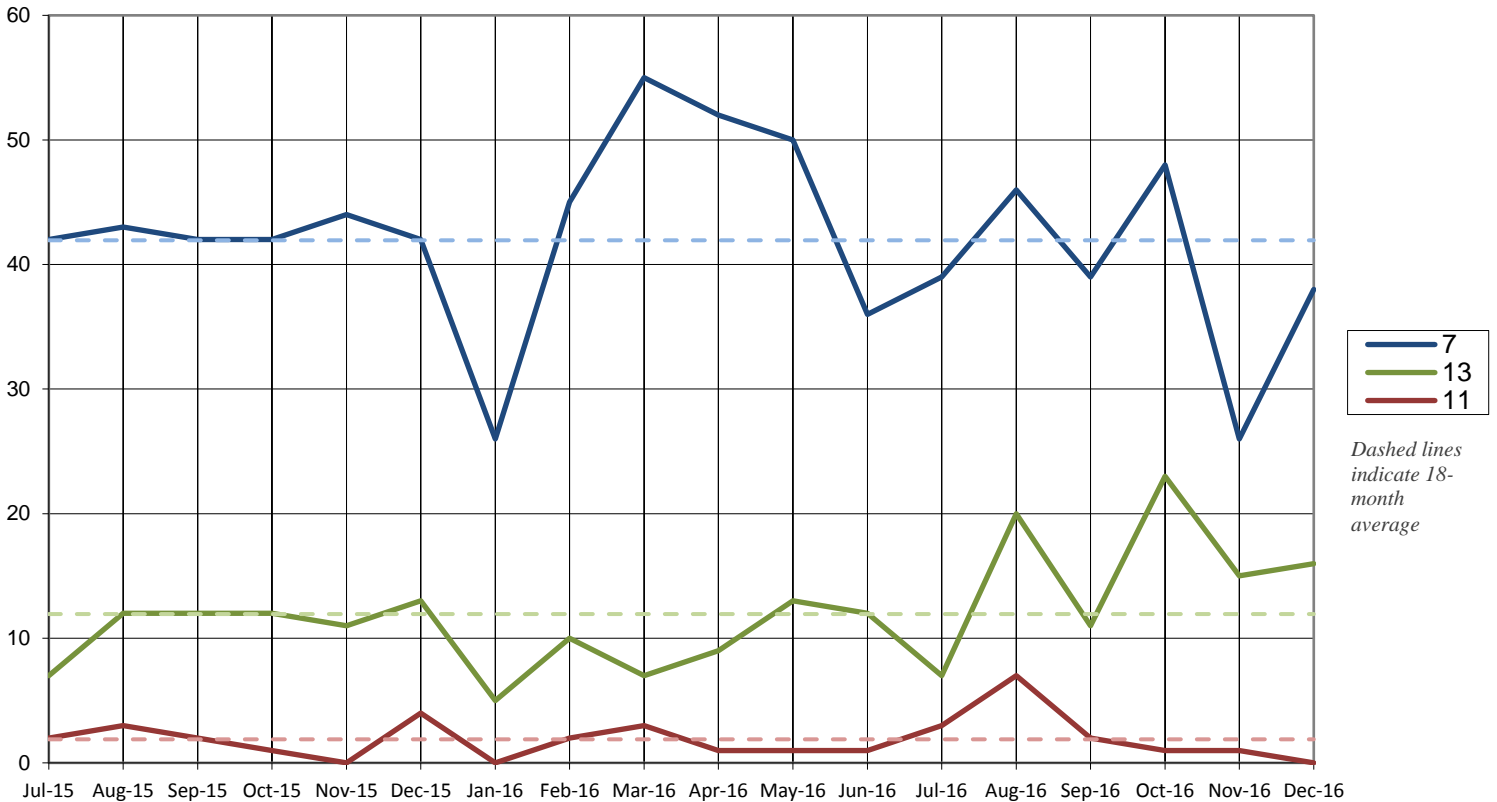


Total Cases Filed per Year



	2007	2008	2009	2010	2011	2012	2013	2014	2015	2016
Chapter 11	11	28	50	67	32	28	31	37	21	22
Chapter 13	303	329	320	372	154	108	106	118	134	148
Chapter 7	390	499	792	843	773	720	658	604	527	500
Total	704	856	1162	1282	959	856	795	759	682	670

Cases Filed Per Month by Chapter - 18 months



Pro Se Filings 2016

	Total	Pro Se
Ch. 7	500	141
Ch. 13	148	52
Ch. 11	22	2

