

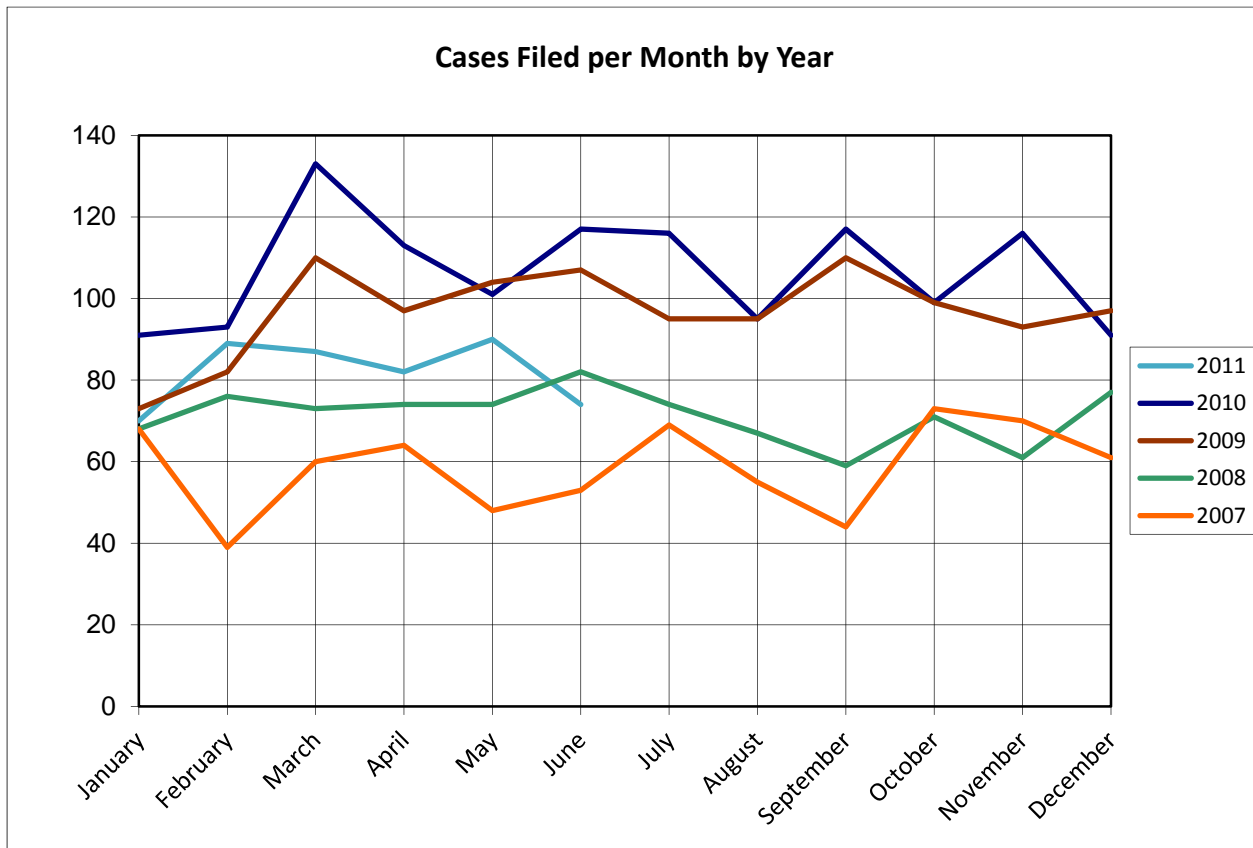
United States Bankruptcy Court for the District of Columbia

Report on Bankruptcy Case Filings January – June 2011

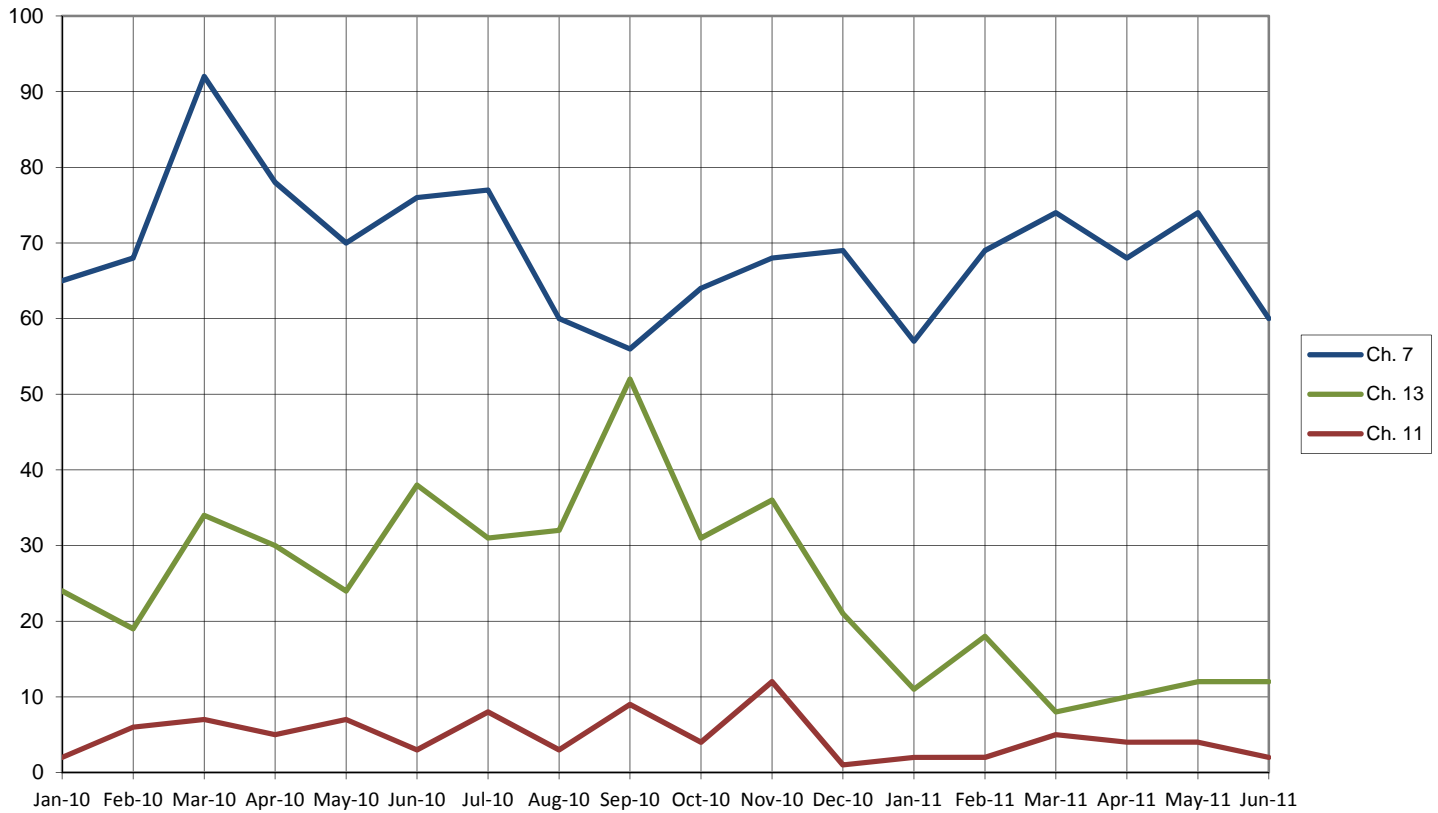
| | Month Total | Year-to-Date |
|--------|-------------|--------------|
| Ch. 7 | 60 | 402 |
| Ch. 13 | 12 | 71 |
| Ch. 11 | 2 | 19 |
| | 74 | 492 |

As of June 30, 2011...

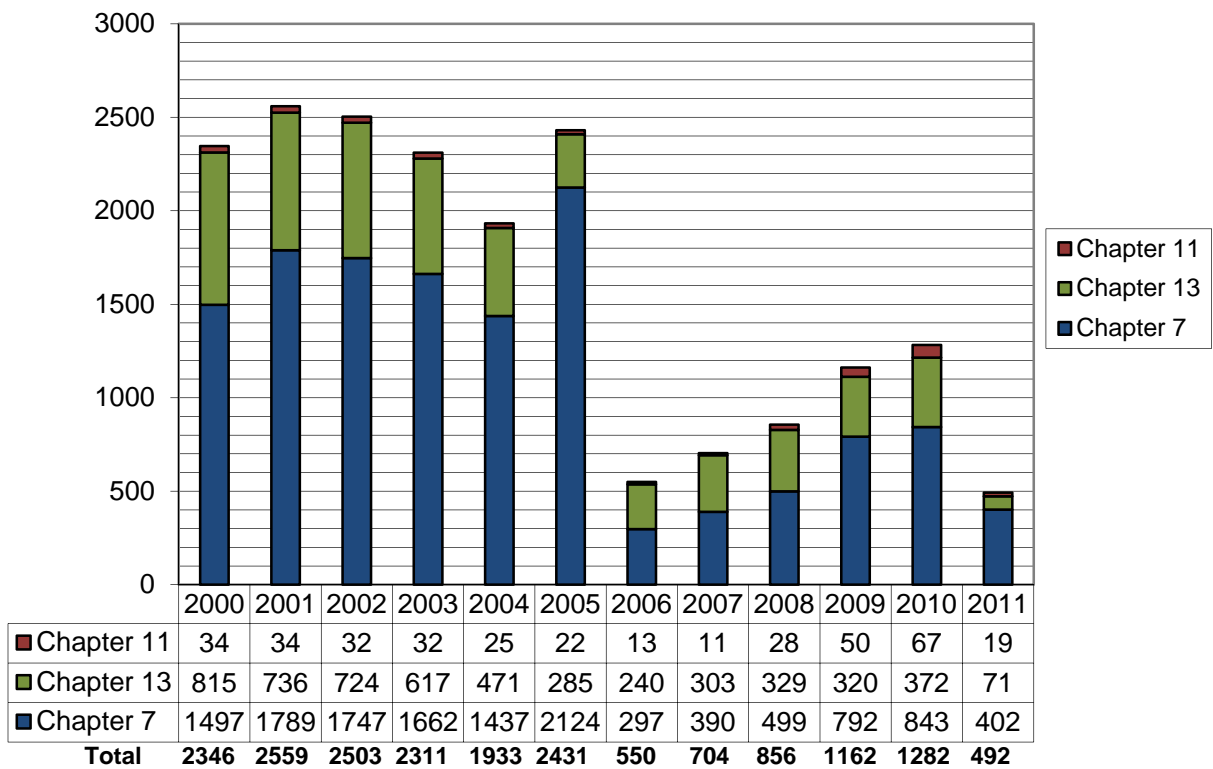
- ◆ The projected total cases for 2011 is **992**
- ◆ Compared to 2010, filings decreased by **24.1%**
- ◆ An average of **2.72** cases were filed each day



Cases Filed Per Month by Chapter - 18 months



Total Cases Filed per Year



Pro Se Filings January - June 2011

| | Total | Pro Se |
|--------|-------|--------|
| Ch. 7 | 402 | 59 |
| Ch. 13 | 71 | 9 |
| Ch. 11 | 19 | 0 |

