

United States Bankruptcy Court for the District of Columbia

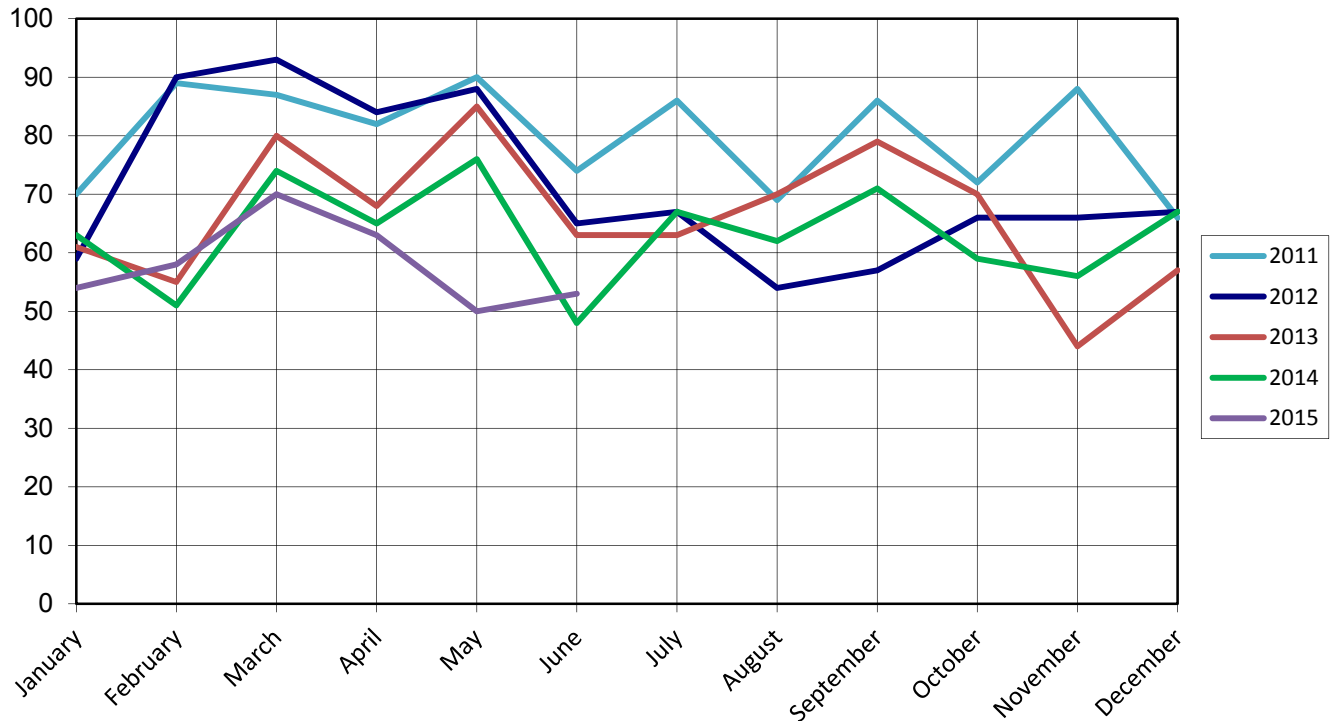
Report on Bankruptcy Case Filings June 2015

	Month Total	2015 YTD Total	2014 YTD Total
Ch. 7	41	272	300 (-28)
Ch. 13	12	55	49 (+18)
Ch. 11	0	9	28 (-19)
	53	348	377 (-29)

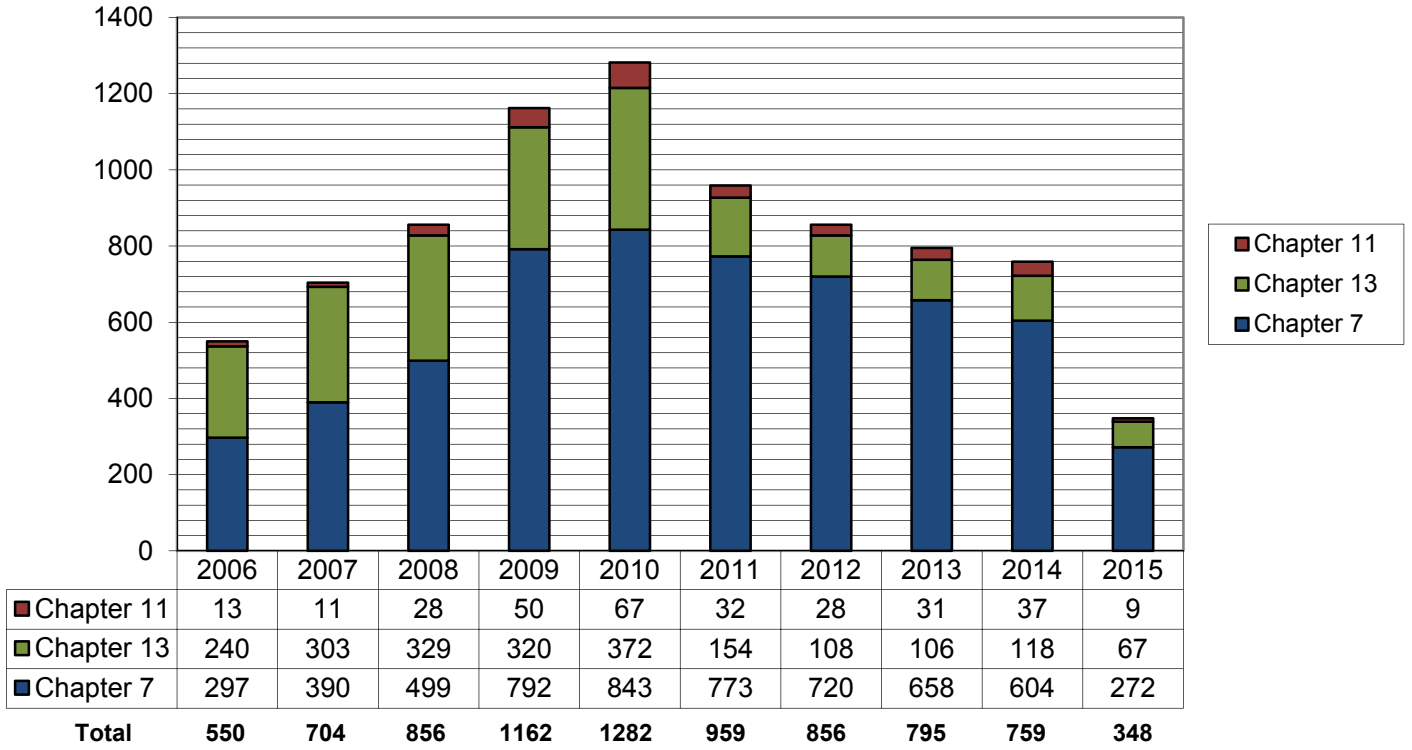
As of June 30, 2015

- ◆ The projected total cases for 2015 is **702**
- ◆ Compared to 2013, filings decreased by **7.7%**
- ◆ An average of **1.9** cases were filed each day

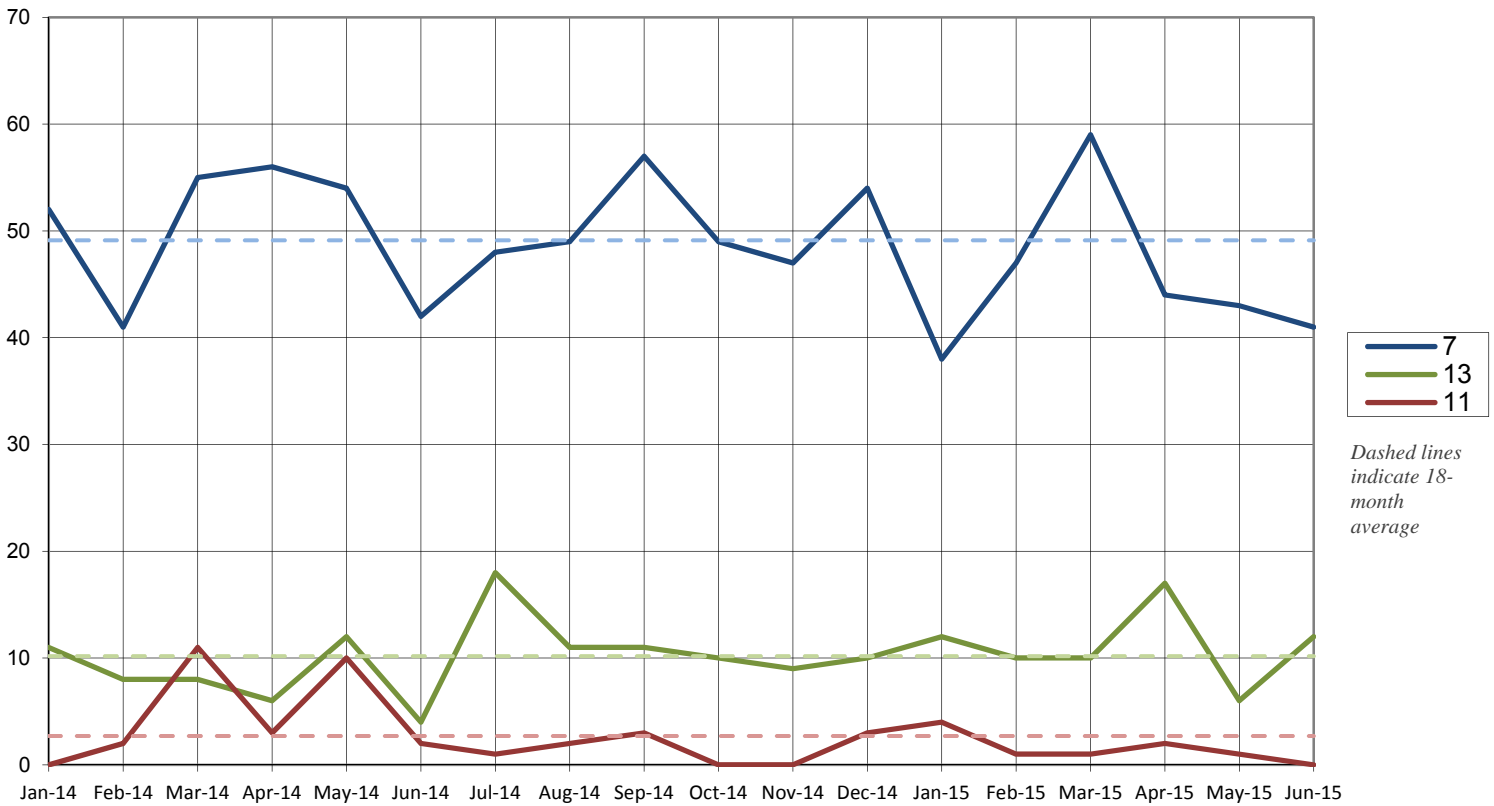
Cases Filed per Month by Year



Total Cases Filed per Year



Cases Filed Per Month by Chapter - 18 months



Pro Se Filings through June 2015

	Total	Pro Se
Ch. 7	272	66
Ch. 13	67	12
Ch. 11	9	2

