

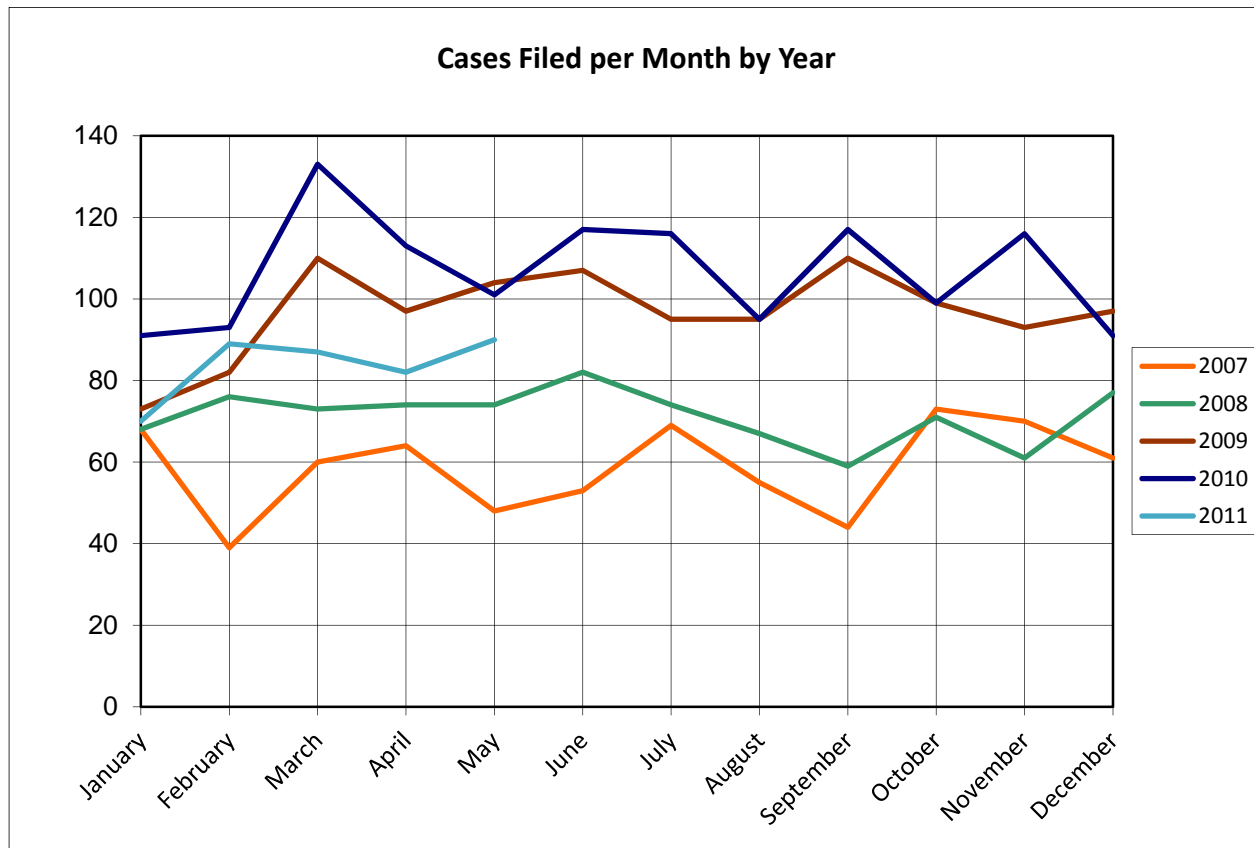
United States Bankruptcy Court for the District of Columbia

Report on Bankruptcy Case Filings January – May 2011

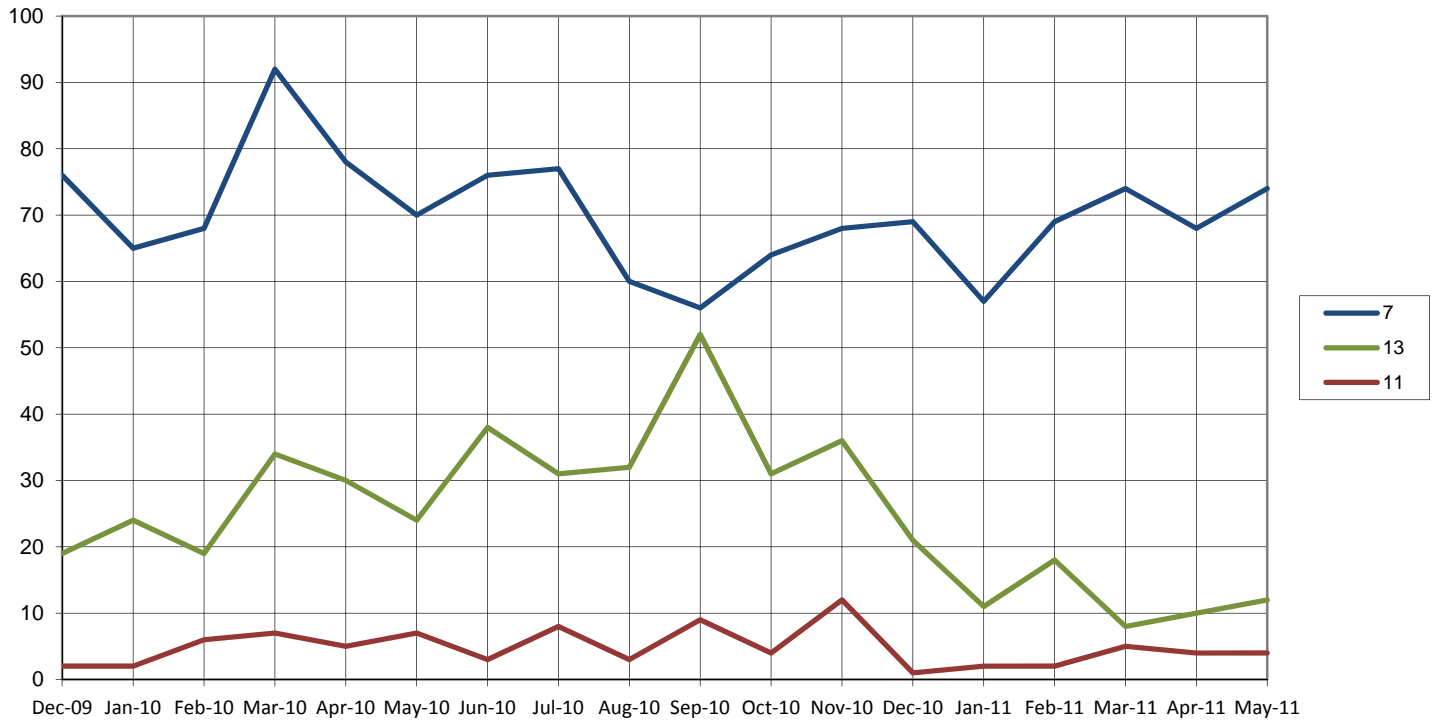
	Month Total	Year-to-Date
Ch. 7	74	342
Ch. 13	12	59
Ch. 11	4	17
	90	418

As of May 31, 2011...

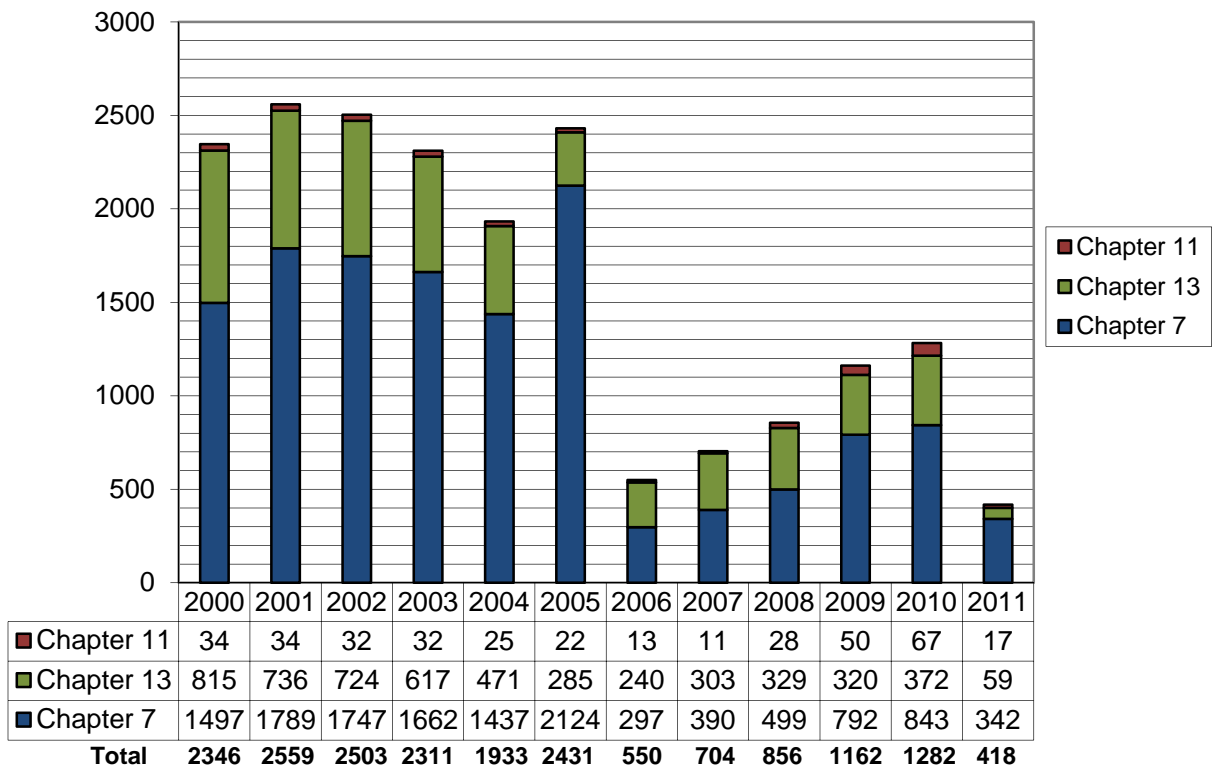
- ◆ The projected total cases for 2011 is **1010**
- ◆ Compared to 2010, filings decreased by **23.1%**
- ◆ An average of **2.77** cases were filed each day



Cases Filed Per Month by Chapter - 18 months



Total Cases Filed per Year



Pro Se Filings January - May 2011

	Total	Pro Se
Ch. 7	342	48
Ch. 13	59	8
Ch. 11	17	0

