

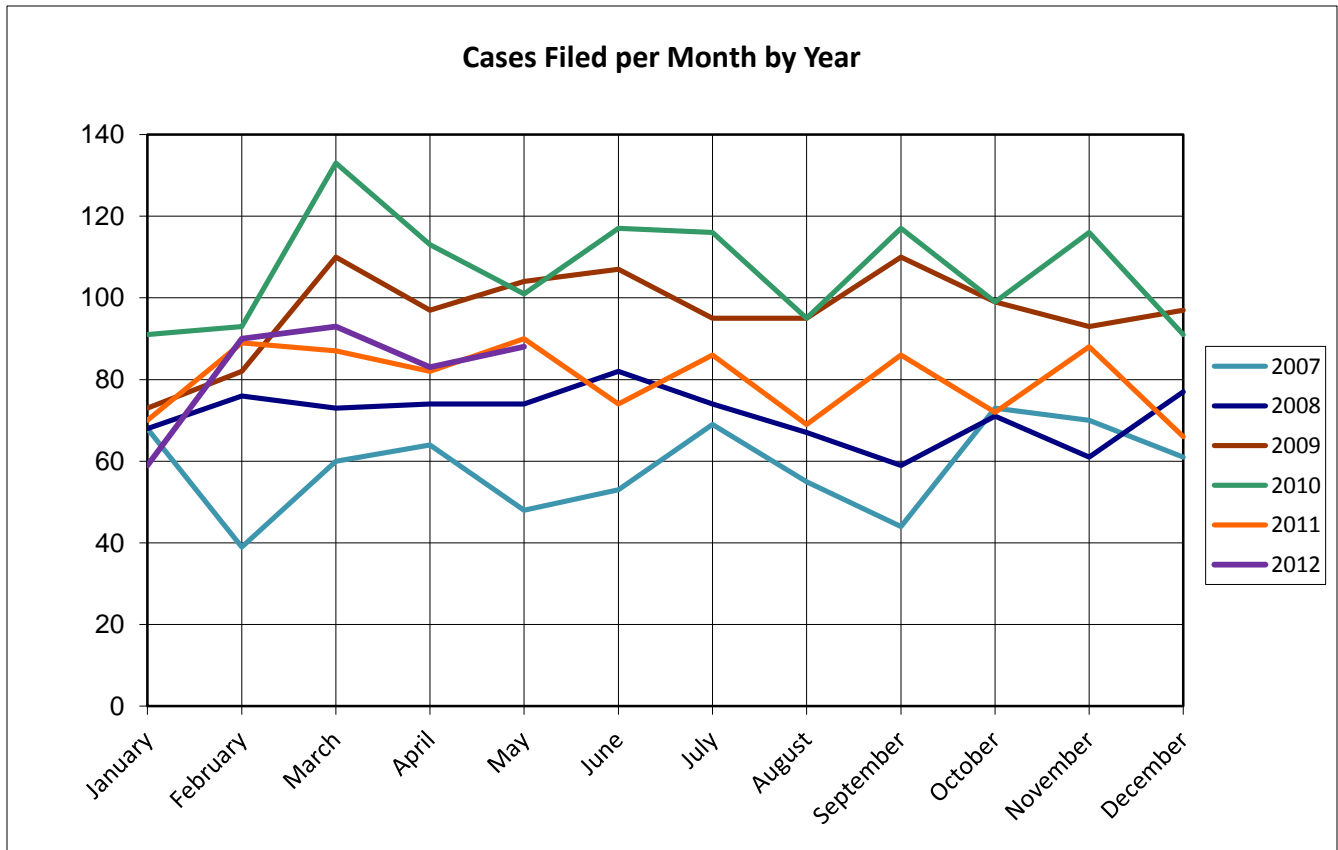
United States Bankruptcy Court for the District of Columbia

Report on Bankruptcy Case Filings January-May 2012

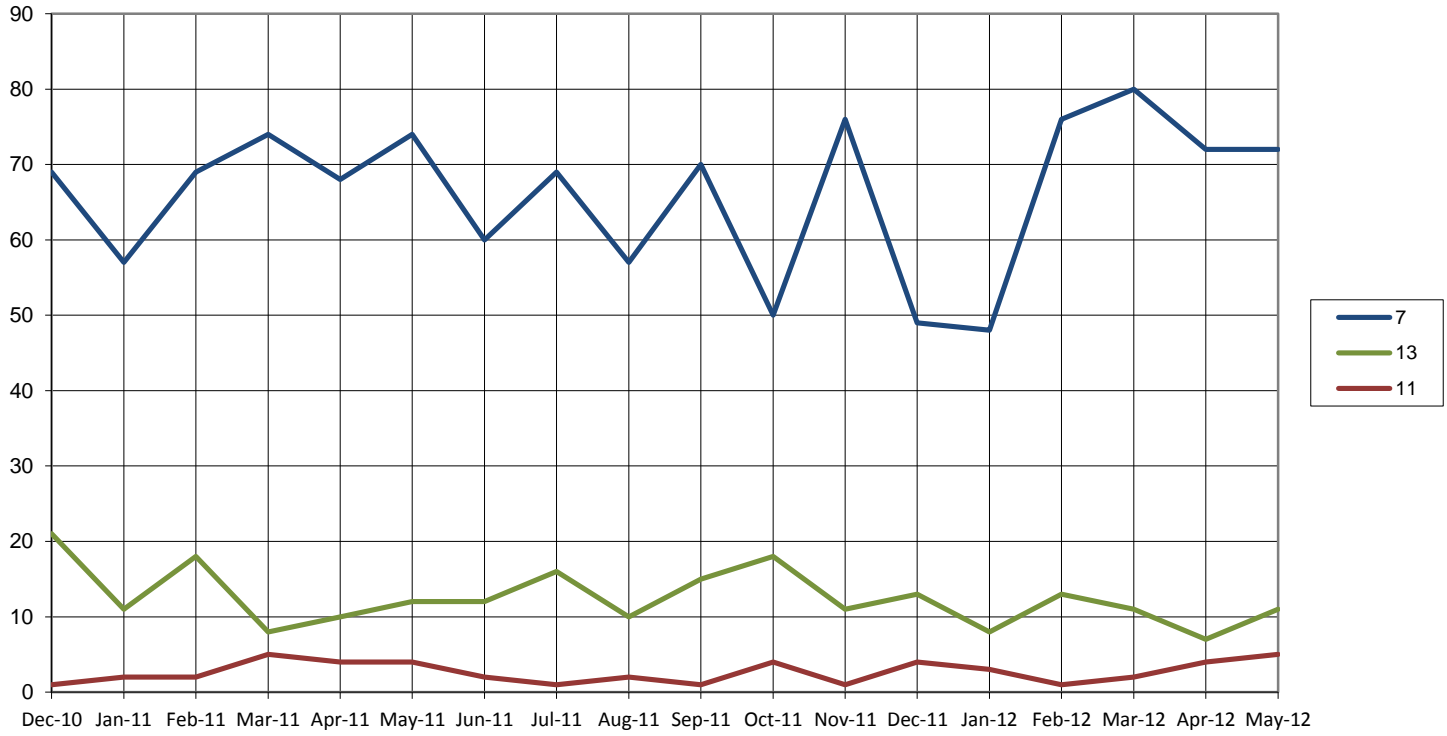
	Month Total	Year Total	2011 Total
Ch. 7	72	348	342 (+6)
Ch. 13	11	50	59 (-9)
Ch. 11	5	15	17 (-2)
	88	413	418 (-5)

As of May 31, 2012...

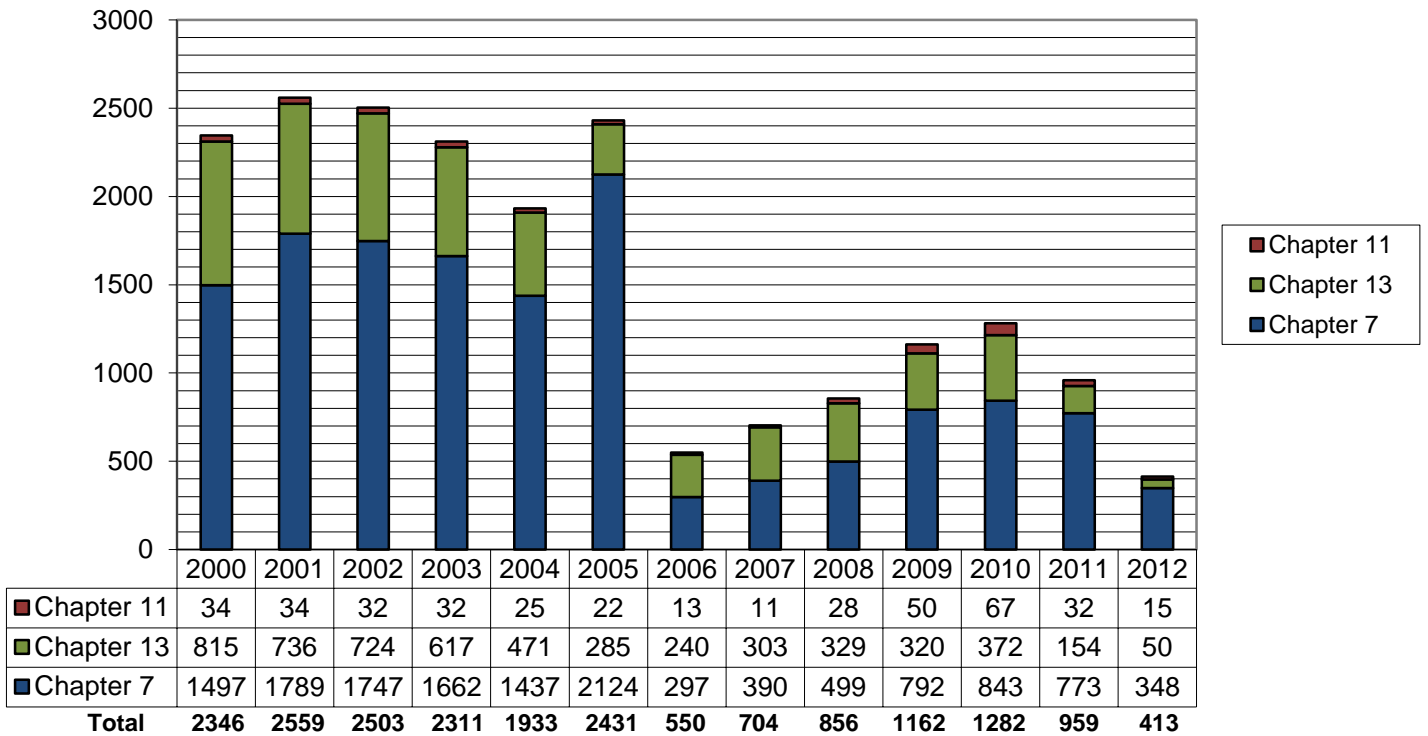
- ◆ The projected total cases for 2012 is **994**
- ◆ Compared to 2011, filings decreased by **1.01%**
- ◆ An average of **2.7** cases were filed each day



Cases Filed Per Month by Chapter - 18 months



Total Cases Filed per Year



Pro Se Filings January-May 2012

	Total	Pro Se
Ch. 7	348	58
Ch. 13	50	10
Ch. 11	15	1

