

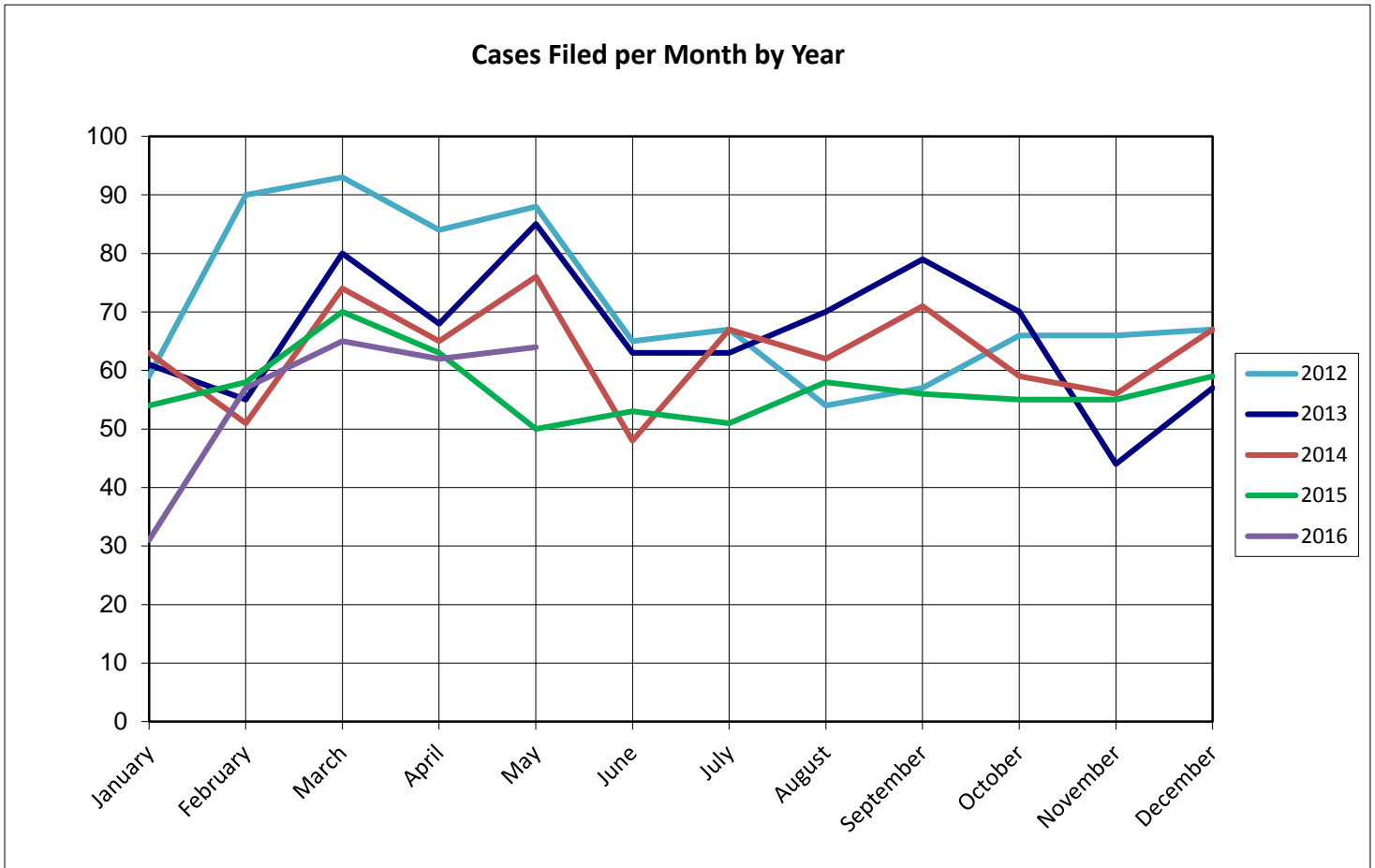
United States Bankruptcy Court for the District of Columbia

Report on Bankruptcy Case Filings May 2016

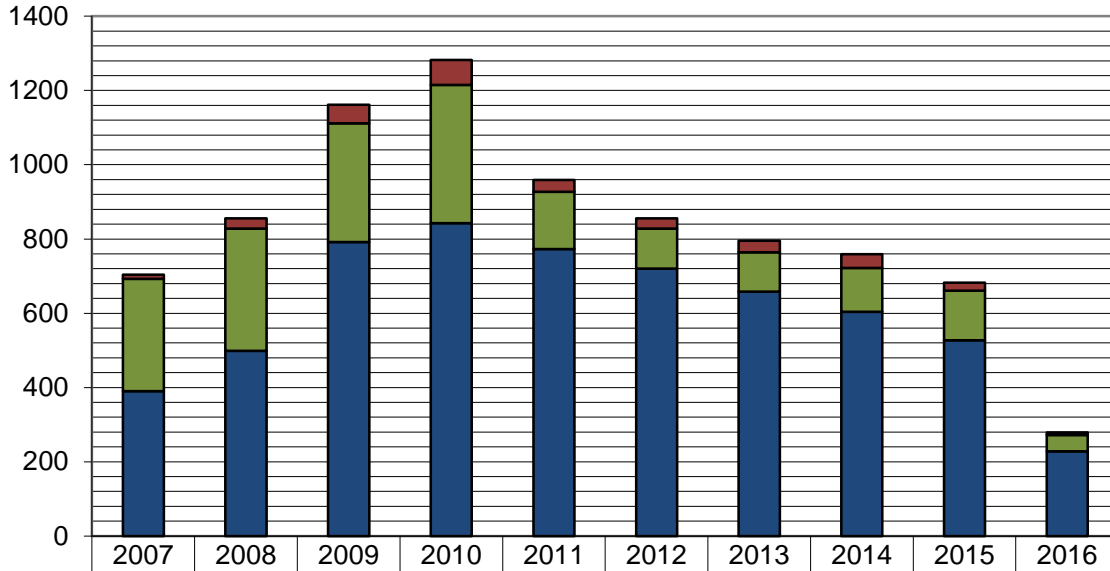
	Month Total	2016 YTD Total	2015 YTD Total
Ch. 7	50	228	231 (-3)
Ch. 13	13	44	55 (-11)
Ch. 11	1	7	9 (-2)
	64	279	295 (-16)

As of May 31, 2016:

- ◆ The projected total cases for 2016 is **674**
- ◆ Compared to 2015, filings decreased by **5.4%**
- ◆ An average of **1.8** cases were filed each day



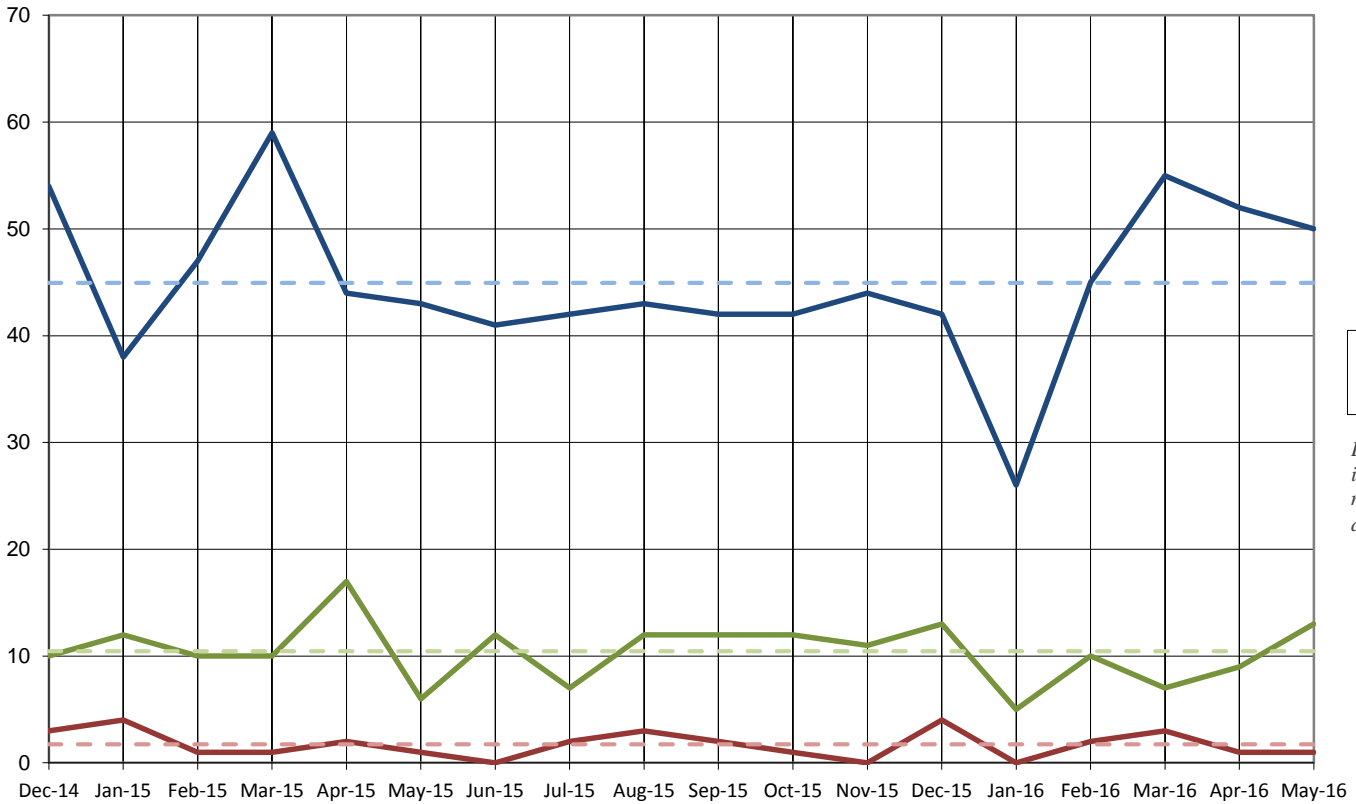
Total Cases Filed per Year



■ Chapter 11
■ Chapter 13
■ Chapter 7

	2007	2008	2009	2010	2011	2012	2013	2014	2015	2016
■ Chapter 11	11	28	50	67	32	28	31	37	21	7
■ Chapter 13	303	329	320	372	154	108	106	118	134	44
■ Chapter 7	390	499	792	843	773	720	658	604	527	228
Total	704	856	1162	1282	959	856	795	759	682	279

Cases Filed Per Month by Chapter - 18 months



— 7
— 13
— 11

Dashed lines indicate 18-month average

Pro Se Filings through May 2016

	Total	Pro Se
Ch. 7	228	56
Ch. 13	44	20
Ch. 11	7	0

