

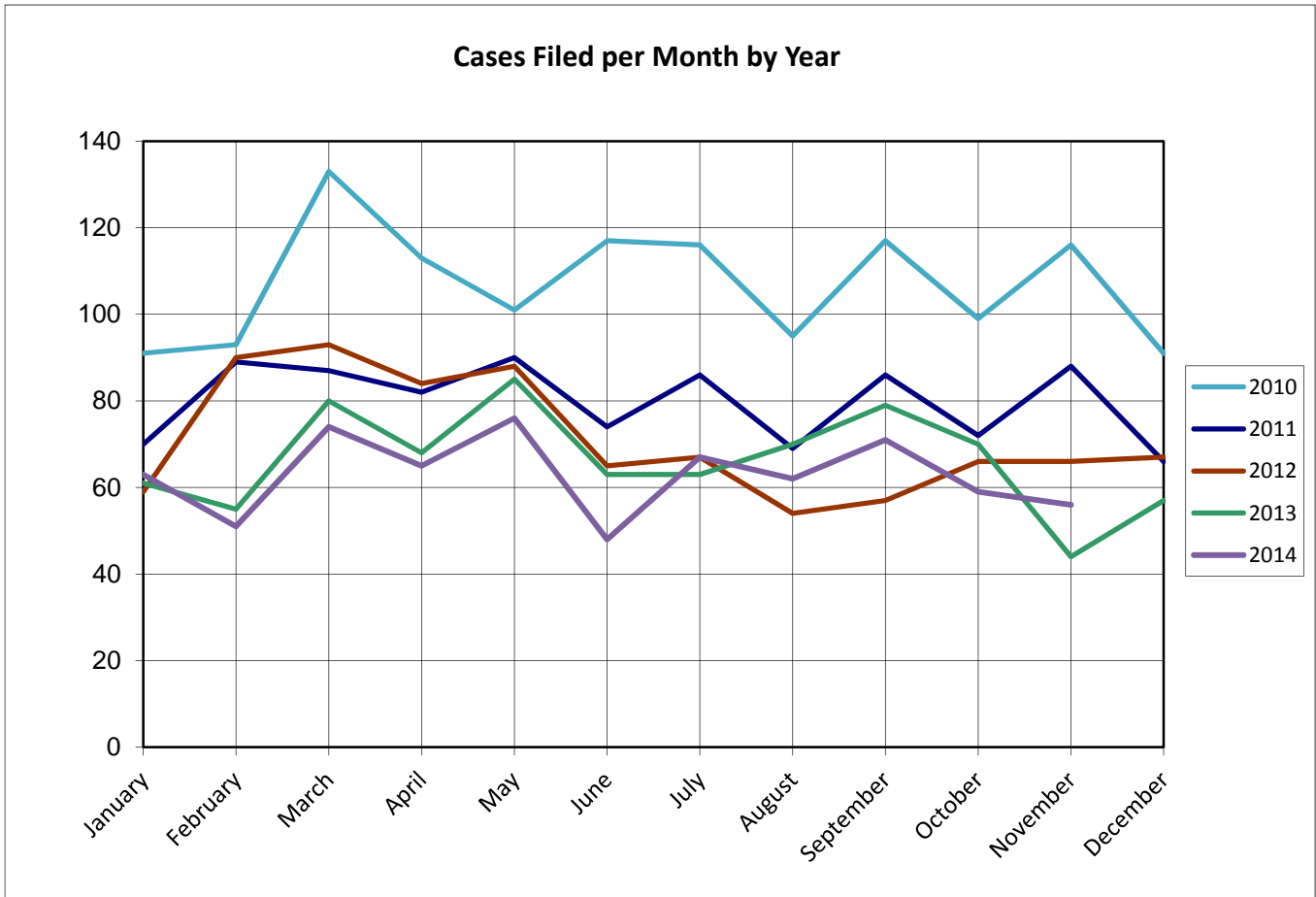
United States Bankruptcy Court for the District of Columbia

Report on Bankruptcy Case Filings
November 2014

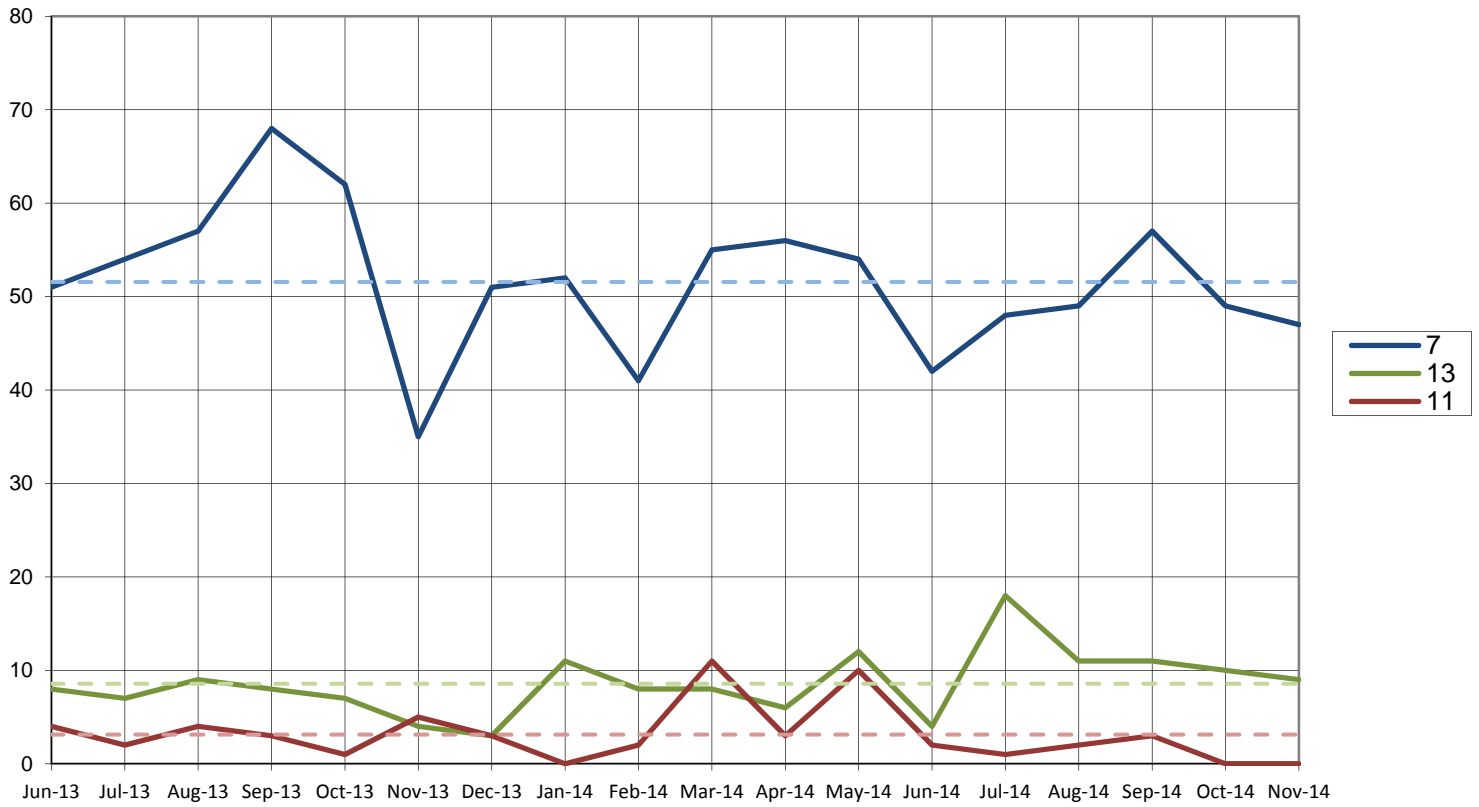
	Month Total	Year Total	2013 Total
Ch. 7	47	550	607 (-57)
Ch. 13	9	108	103 (+5)
Ch. 11	0	34	28 (+6)
	56	692	738 (-46)

As of November 30, 2014

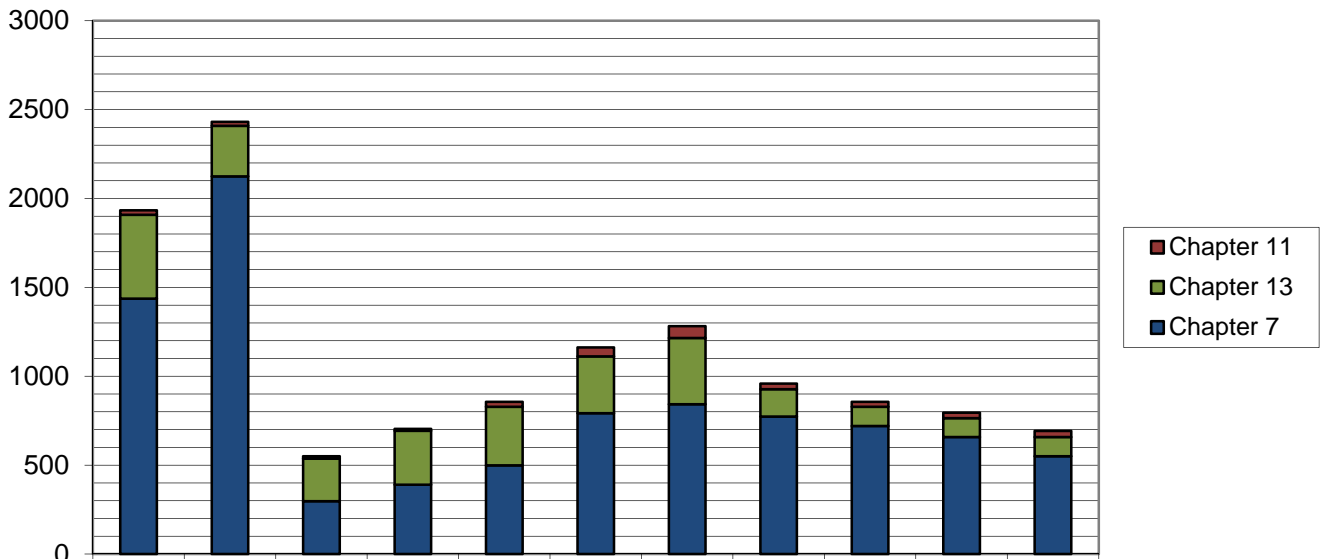
- ◆ The projected total cases for 2014 is **756**
- ◆ Compared to 2013, filings decreased by **6.2%**
- ◆ An average of **2.1** cases were filed each day



Cases Filed Per Month by Chapter - 18 months



Total Cases Filed per Year



	2004	2005	2006	2007	2008	2009	2010	2011	2012	2013	2014
Chapter 11	25	22	13	11	28	50	67	32	28	31	34
Chapter 13	471	285	240	303	329	320	372	154	108	106	108
Chapter 7	1437	2124	297	390	499	792	843	773	720	658	550
Total	1933	2431	550	704	856	1162	1282	959	856	795	692

Pro Se Filings November 2014

	Total	Pro Se
Ch. 7	550	141
Ch. 13	108	27
Ch. 11	34	1

