

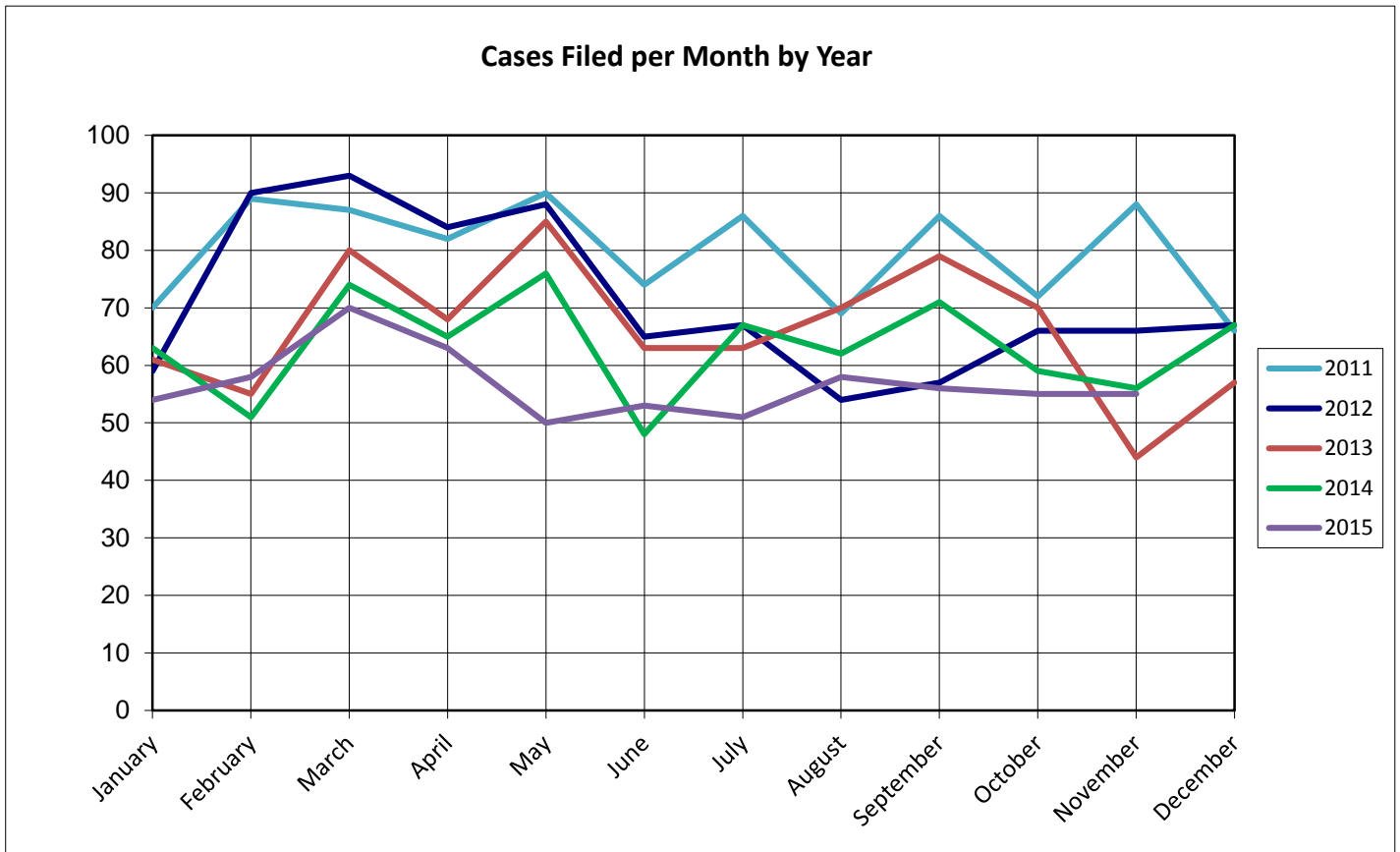
United States Bankruptcy Court for the District of Columbia

Report on Bankruptcy Case Filings November 2015

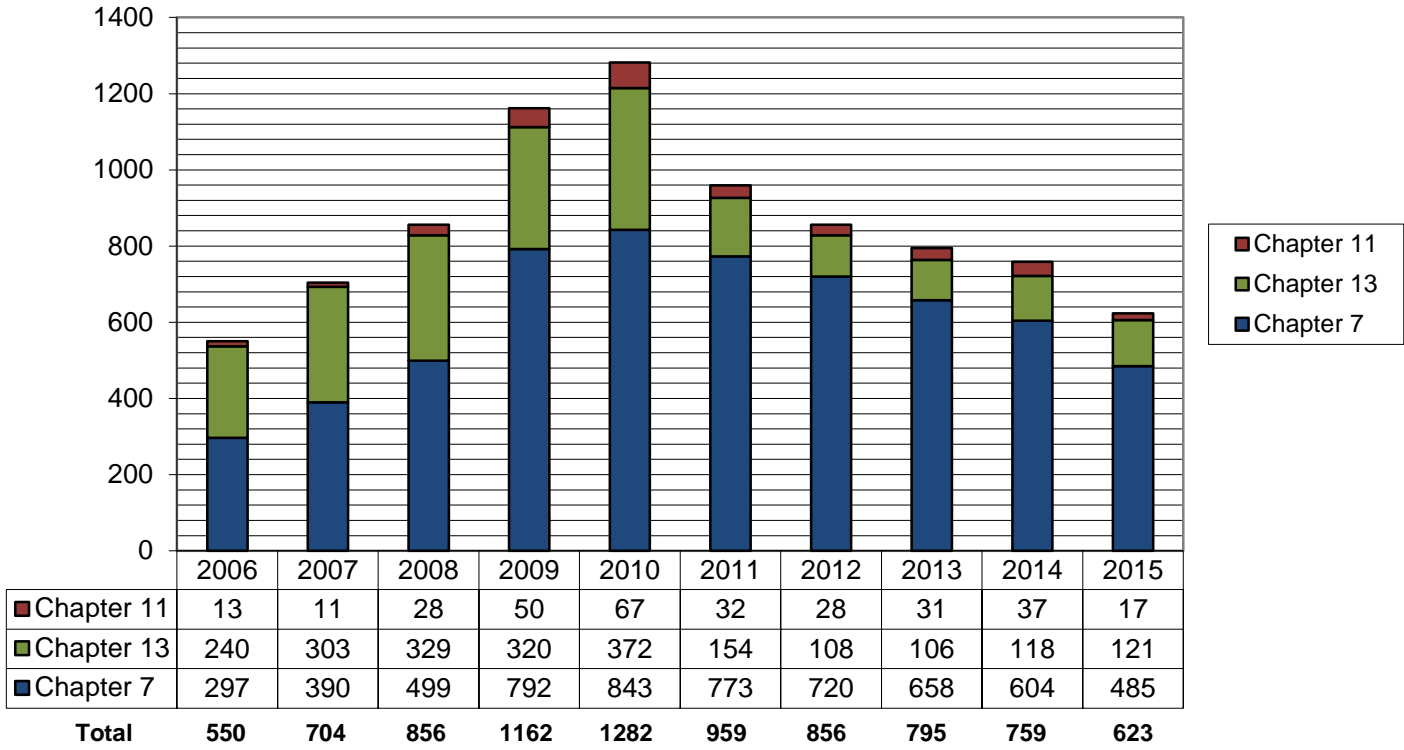
	Month Total	2015 YTD Total	2014 YTD Total
Ch. 7	44	485	550 (-65)
Ch. 13	11	121	108 (+13)
Ch. 11	0	17	34 (-17)
	55	623	692 (-68)

As of November 30, 2015,

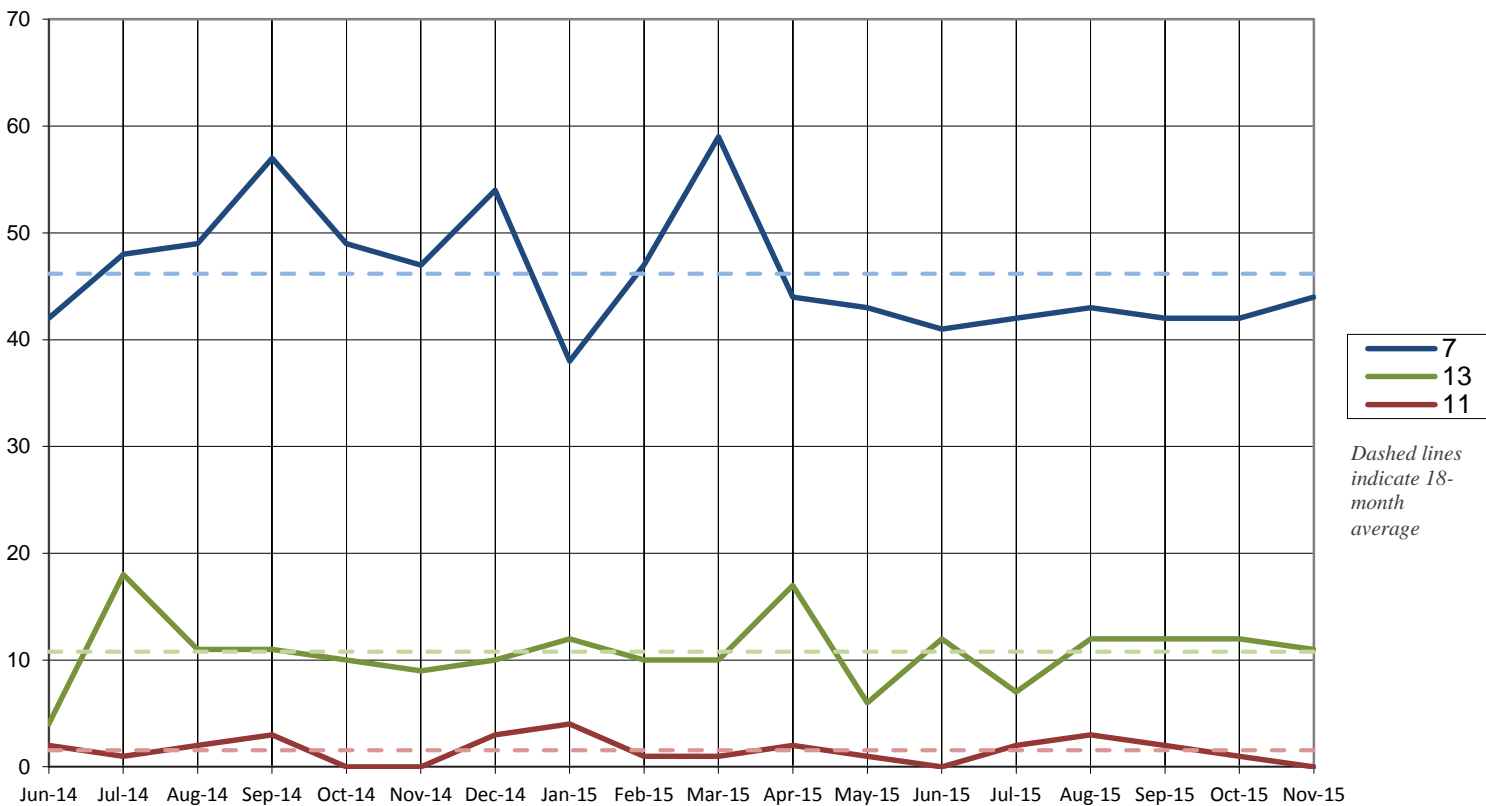
- ◆ The projected total cases for 2015 is **681**
- ◆ Compared to 2013, filings decreased by **10%**
- ◆ An average of **1.9** cases were filed each day



Total Cases Filed per Year



Cases Filed Per Month by Chapter - 18 months



Pro Se Filings through November 2015

	Total	Pro Se
Ch. 7	485	128
Ch. 13	121	28
Ch. 11	17	4

