

United States Bankruptcy Court for the District of Columbia

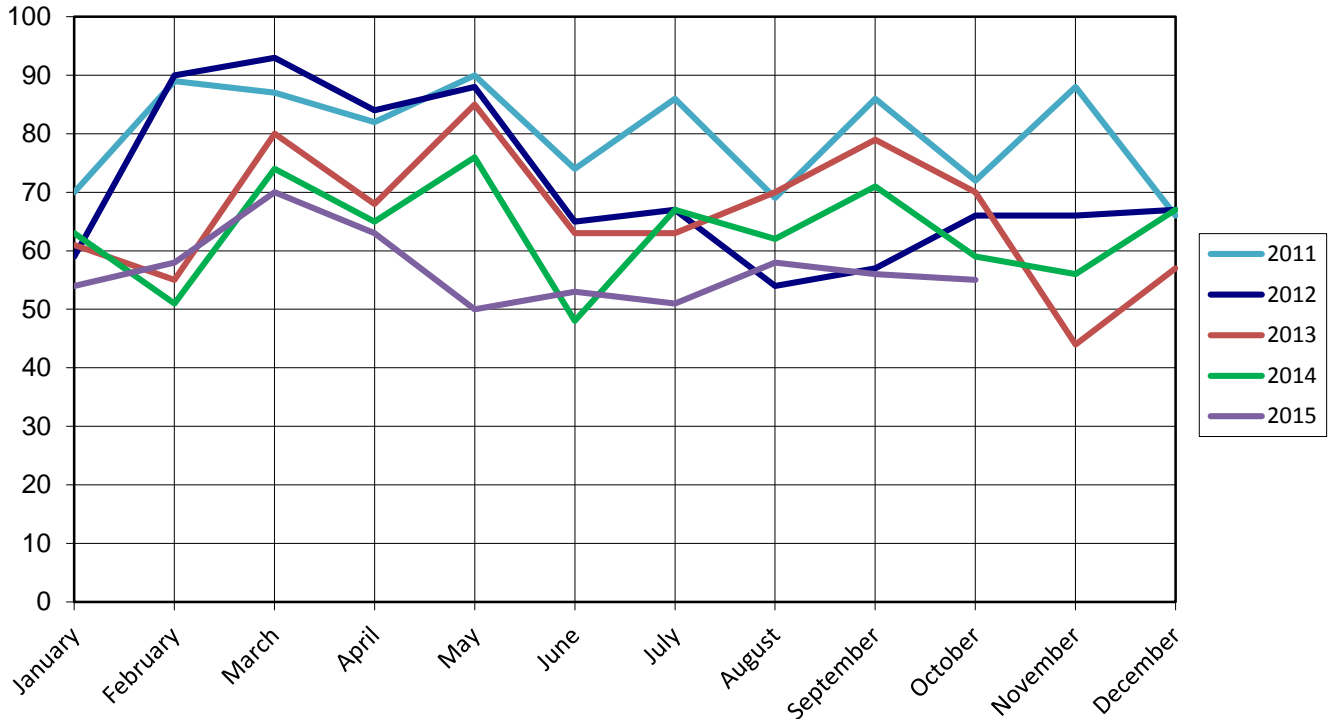
Report on Bankruptcy Case Filings October 2015

	Month Total	2015 YTD Total	2014 YTD Total
Ch. 7	42	441	454 (-62)
Ch. 13	12	110	89 (+11)
Ch. 11	1	17	34 (-17)
	55	568	636 (-68)

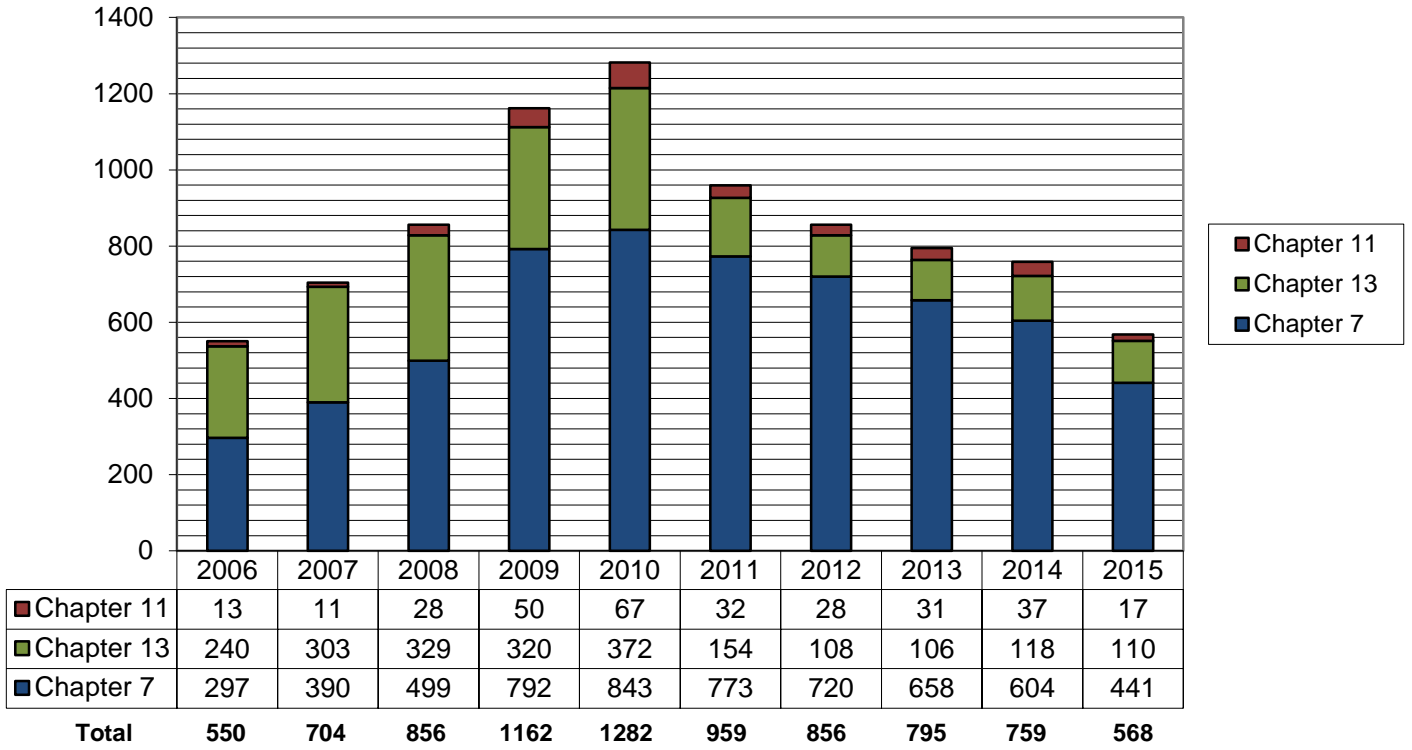
As of October 31, 2015,

- ◆ The projected total cases for 2015 is **682**
- ◆ Compared to 2013, filings decreased by **10.7%**
- ◆ An average of **1.9** cases were filed each day

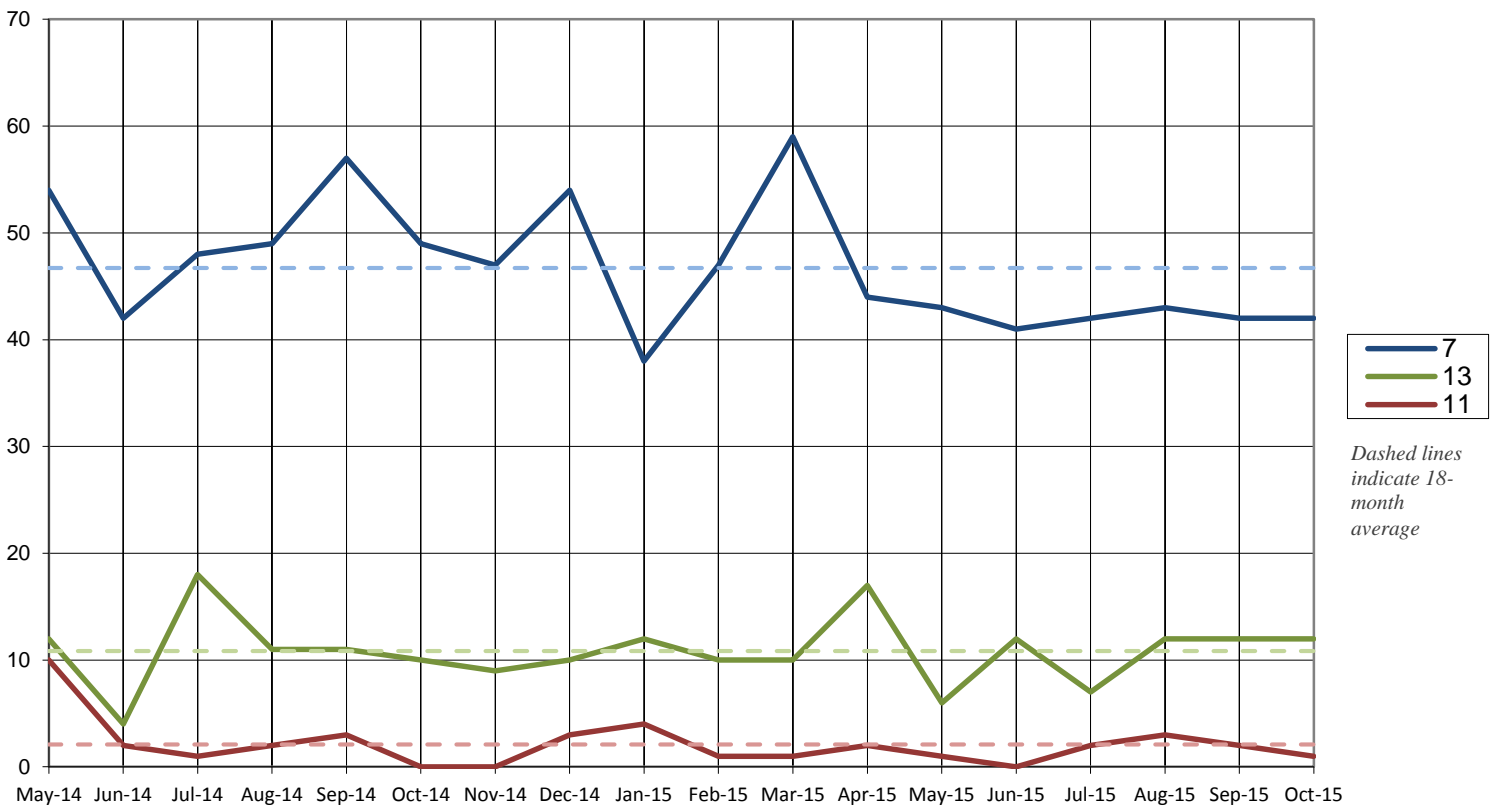
Cases Filed per Month by Year



Total Cases Filed per Year



Cases Filed Per Month by Chapter - 18 months



Pro Se Filings through October 2015

	Total	Pro Se
Ch. 7	441	111
Ch. 13	110	27
Ch. 11	17	4

