

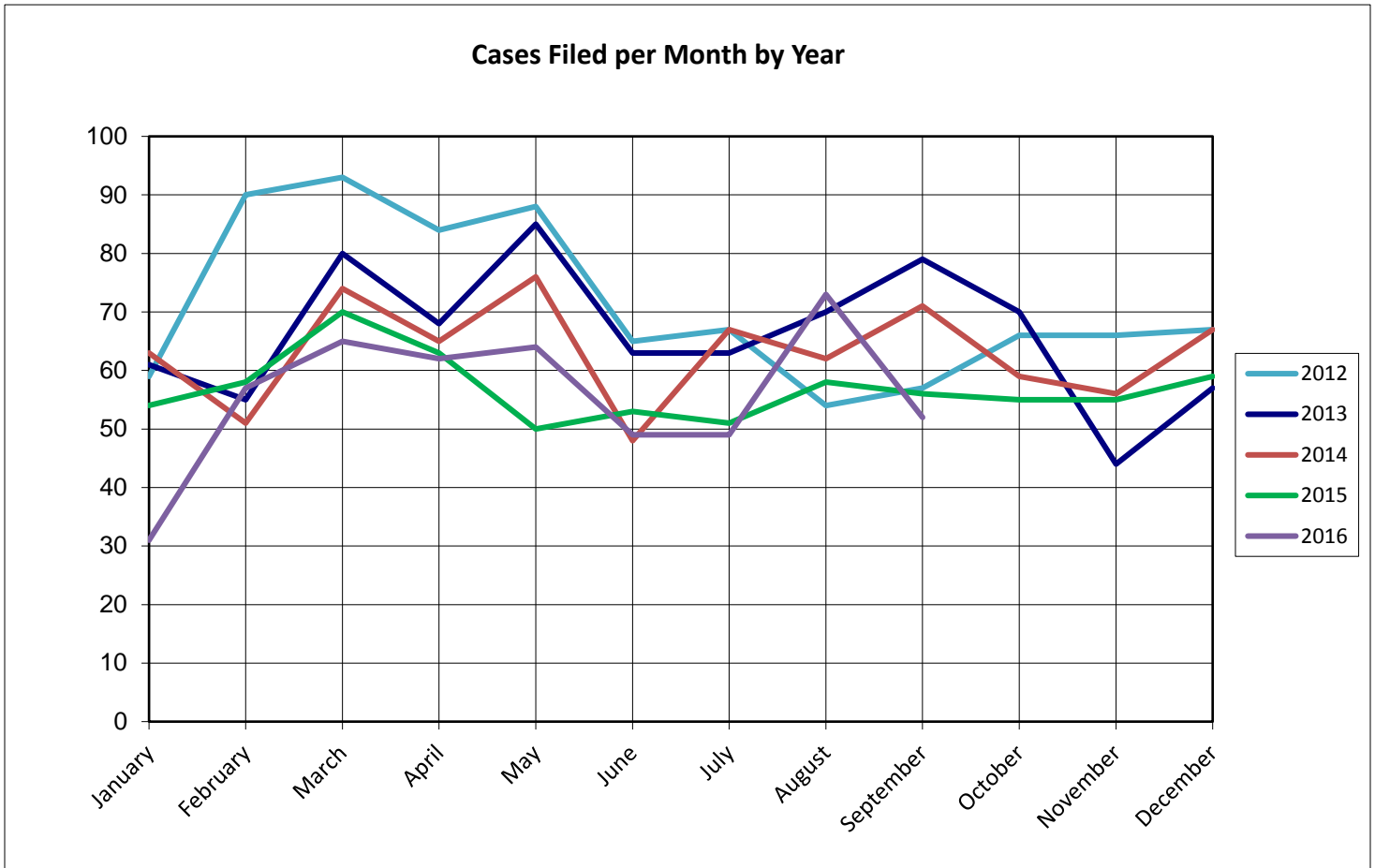
United States Bankruptcy Court for the District of Columbia

Report on Bankruptcy Case Filings September 2016

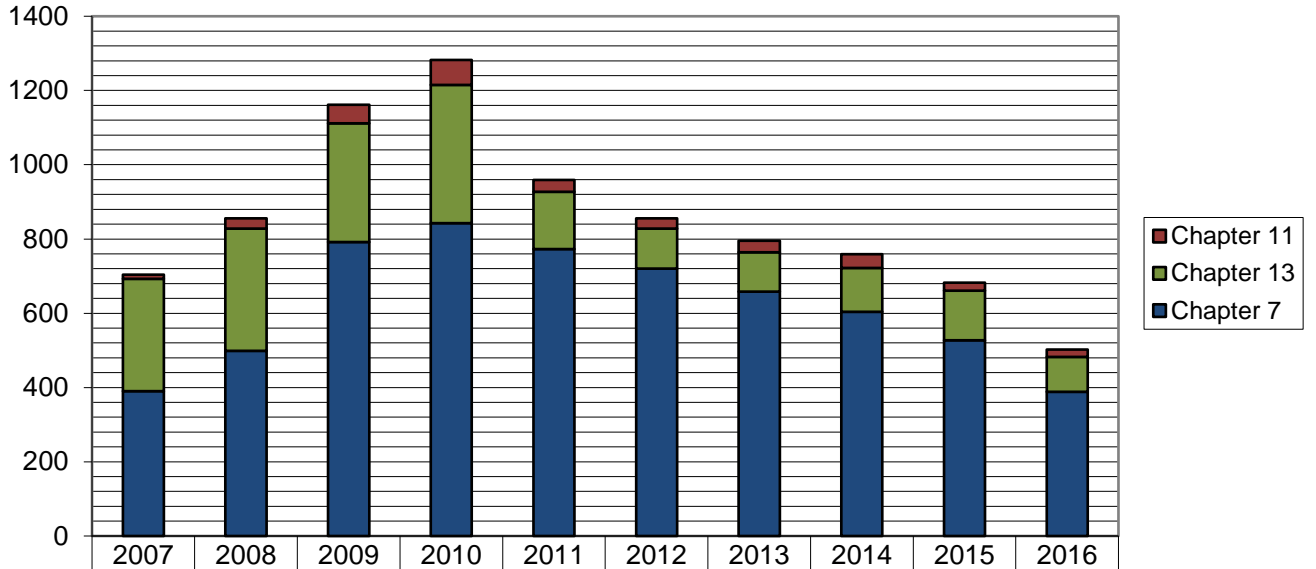
	Month Total	2016 YTD Total	2015 YTD Total
Ch. 7	39	388	399 (-11)
Ch. 13	11	94	98 (-4)
Ch. 11	2	20	16 (+4)
	52	502	513 (-11)

As of September 30, 2016:

- ◆ The projected total cases for 2016 is **671**
- ◆ Compared to 2015, filings decreased by **2.1%**
- ◆ An average of **1.8** cases were filed each day

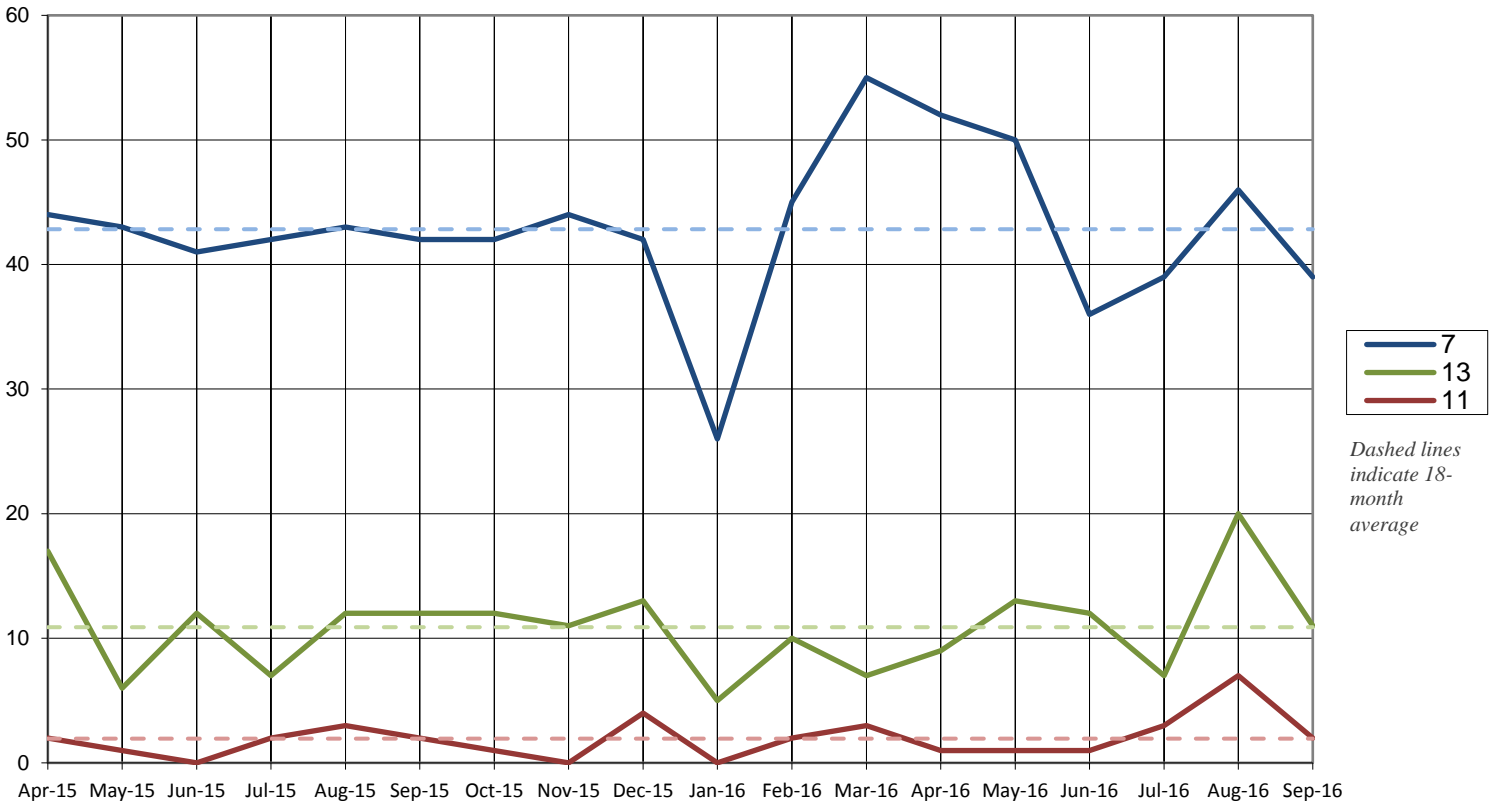


Total Cases Filed per Year



	2007	2008	2009	2010	2011	2012	2013	2014	2015	2016
Chapter 11	11	28	50	67	32	28	31	37	21	20
Chapter 13	303	329	320	372	154	108	106	118	134	94
Chapter 7	390	499	792	843	773	720	658	604	527	388
Total	704	856	1162	1282	959	856	795	759	682	502

Cases Filed Per Month by Chapter - 18 months



Pro Se Filings through September 2016

	Total	Pro Se
Ch. 7	388	112
Ch. 13	94	33
Ch. 11	20	2

