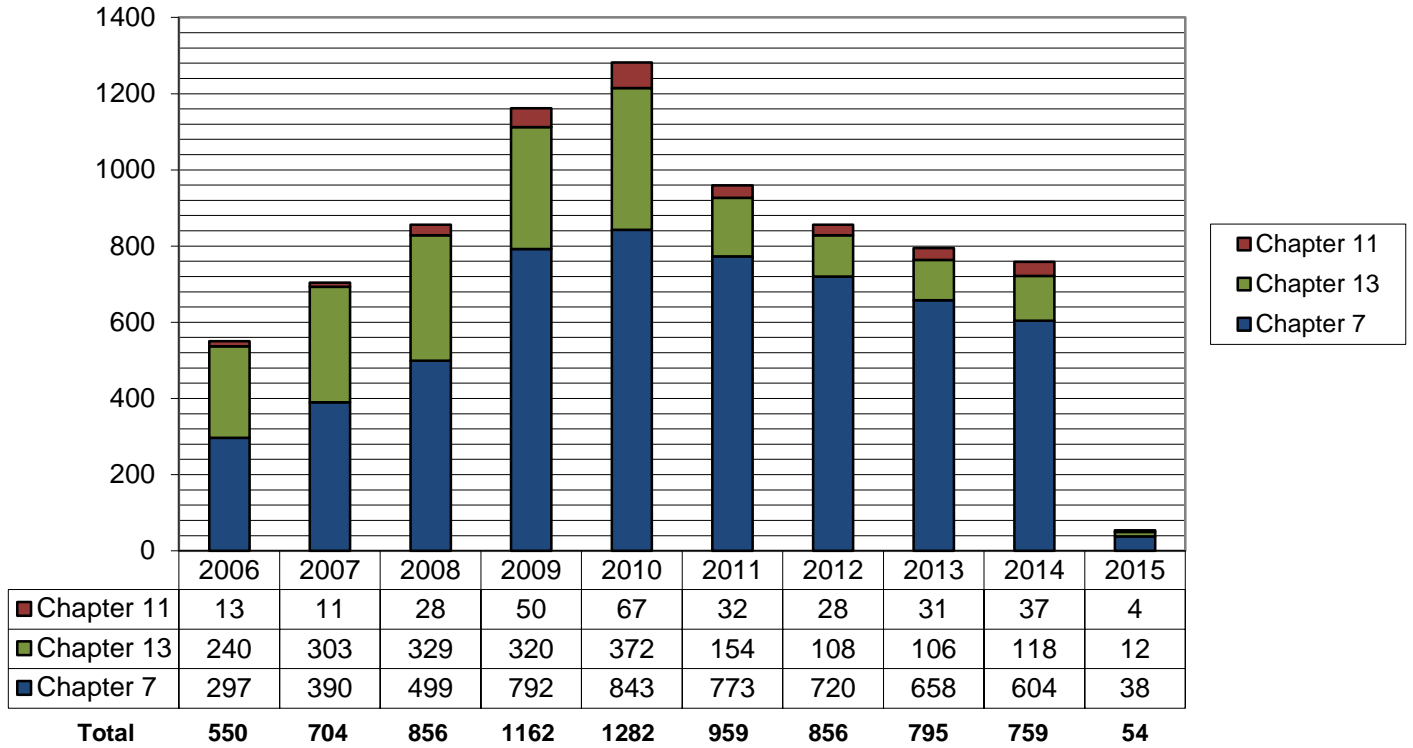
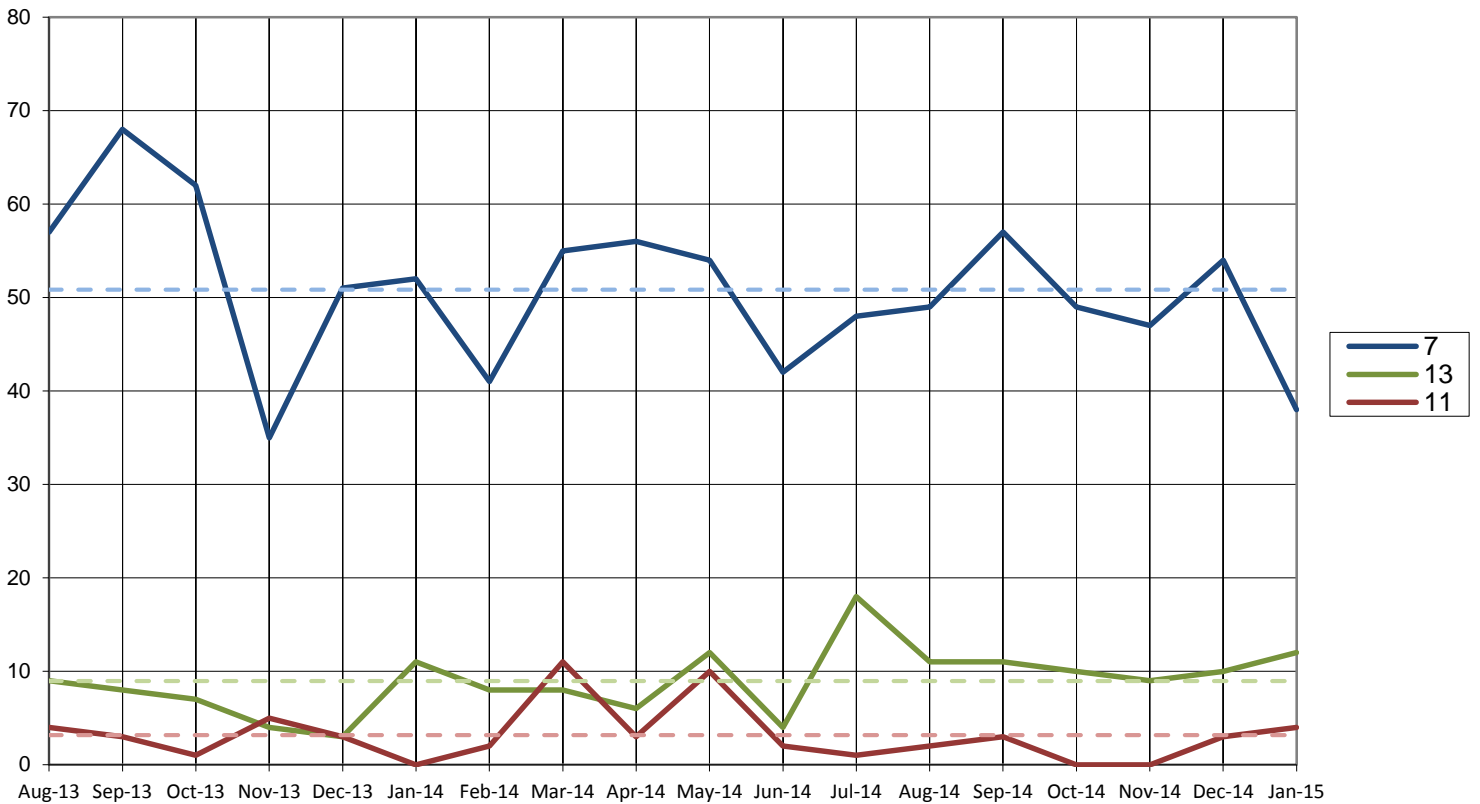


Total Cases Filed per Year

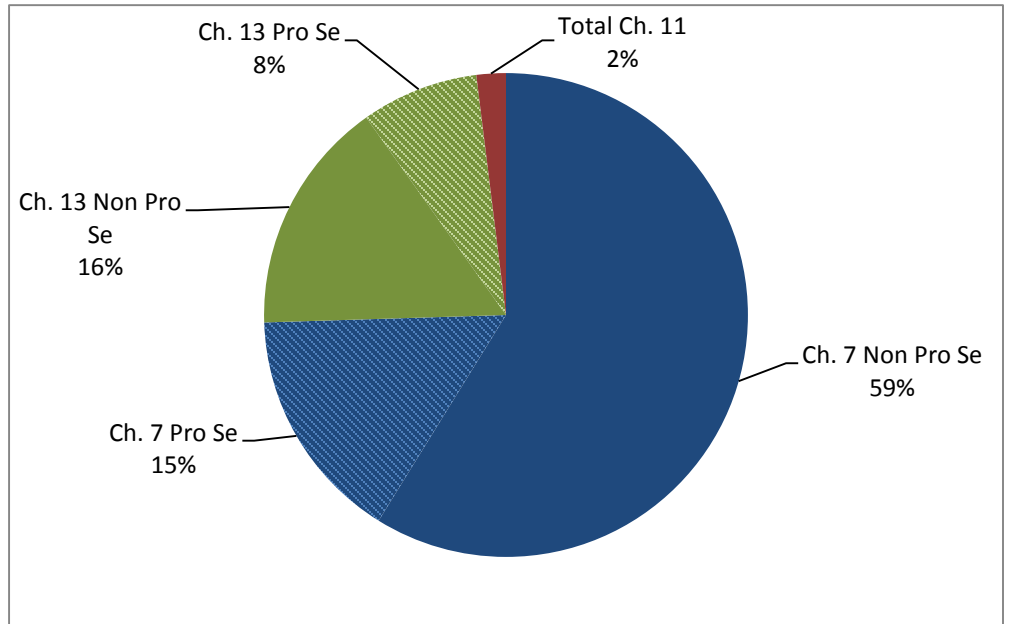


Cases Filed Per Month by Chapter - 18 months

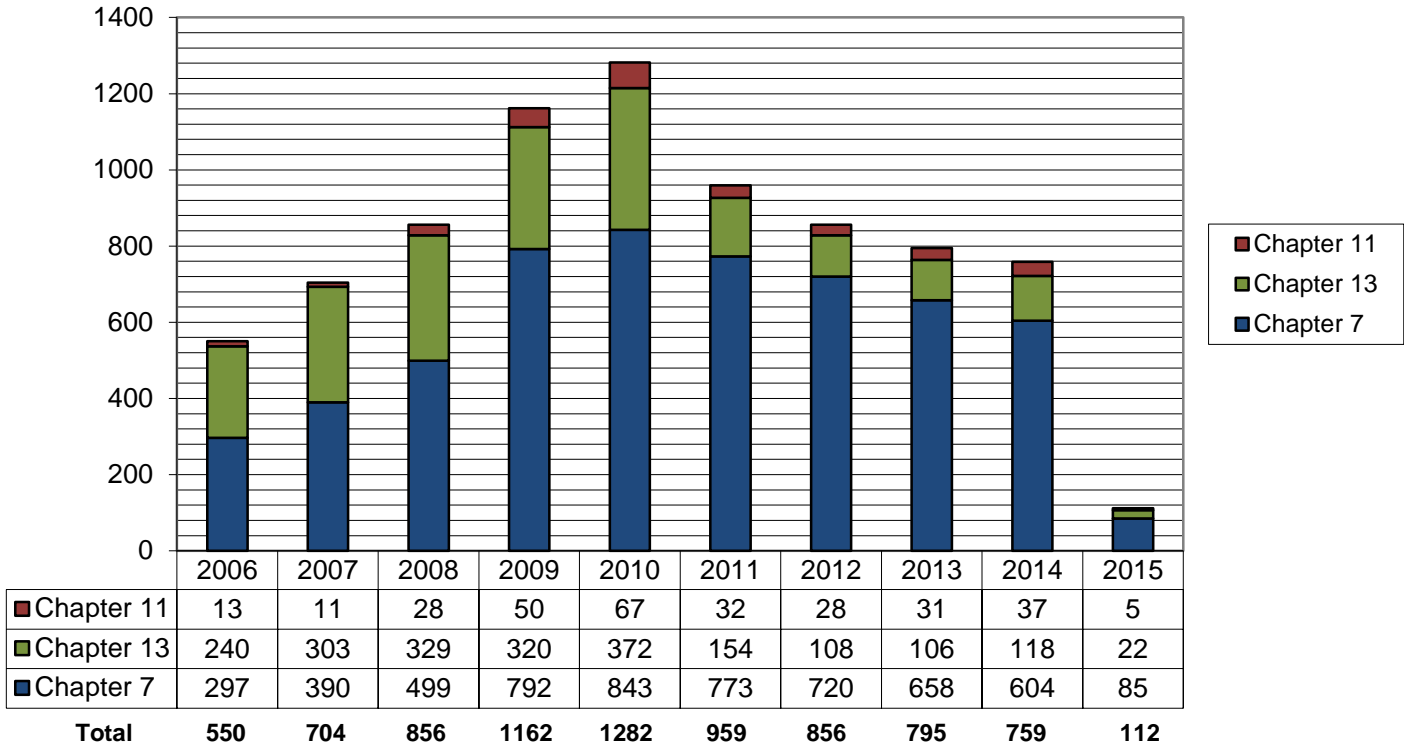


Pro Se Filings January 2015

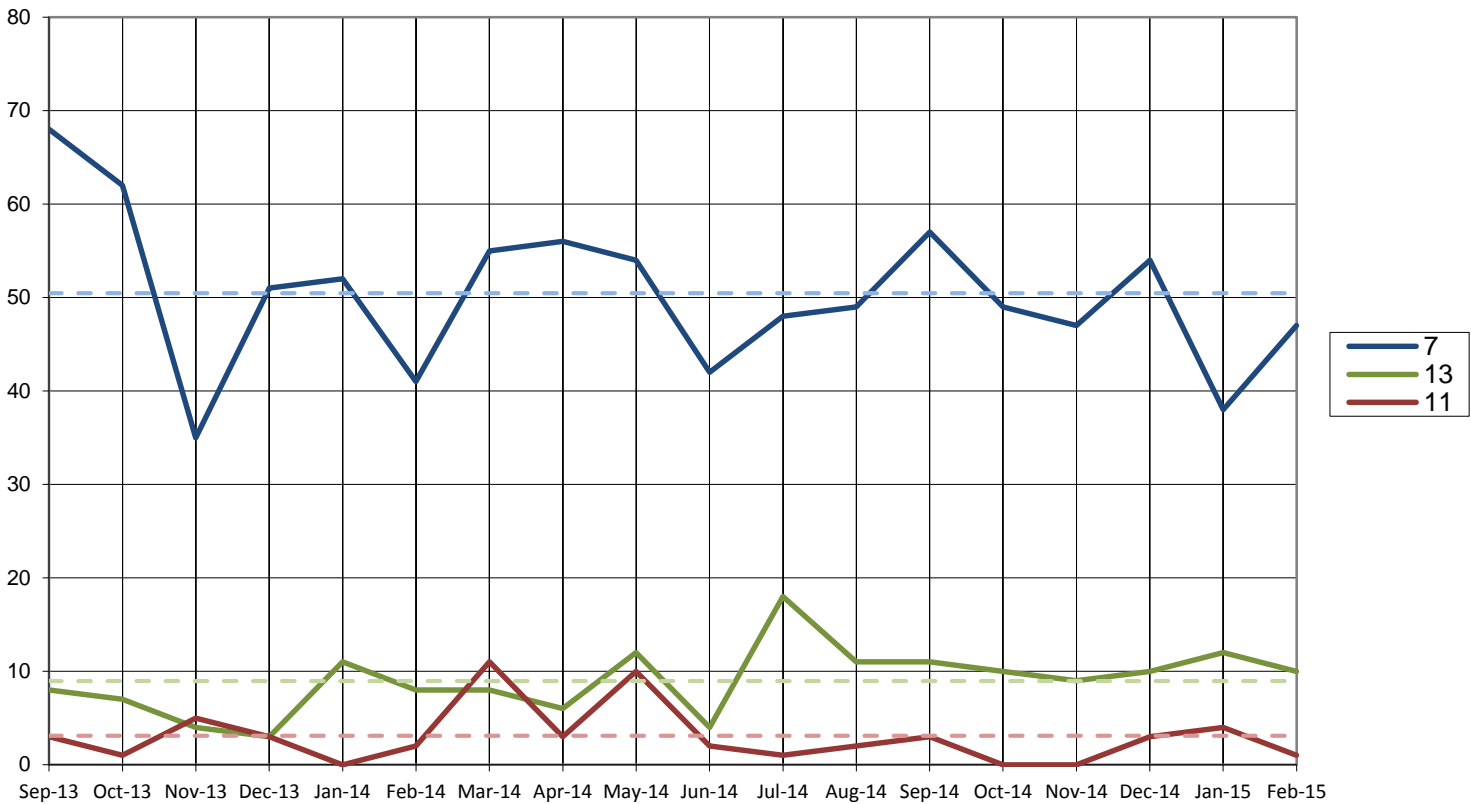
	Total	Pro Se
Ch. 7	38	8
Ch. 13	12	4
Ch. 11	4	1



Total Cases Filed per Year

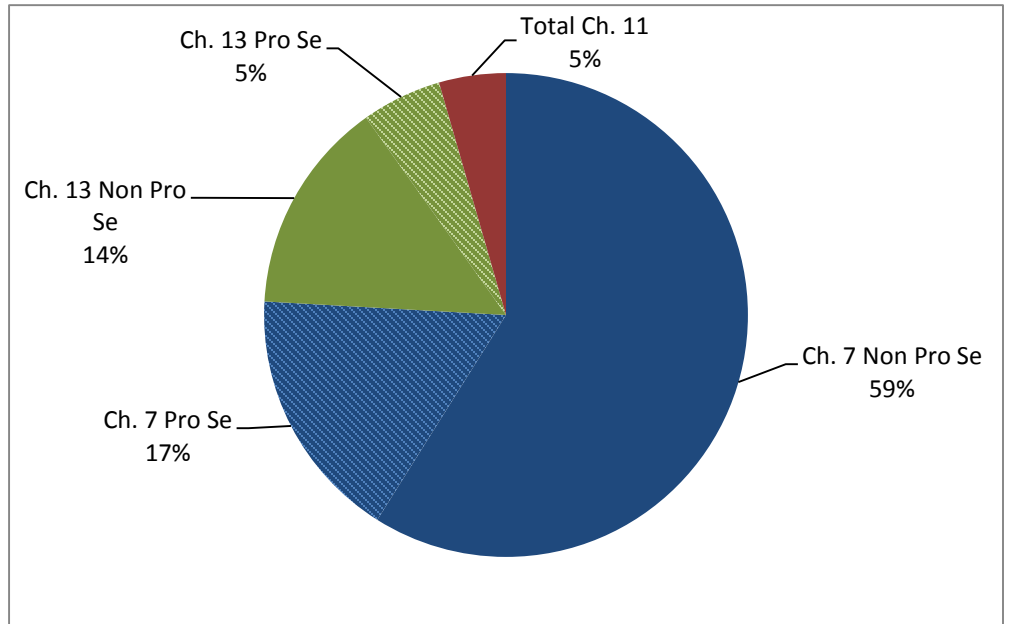


Cases Filed Per Month by Chapter - 18 months

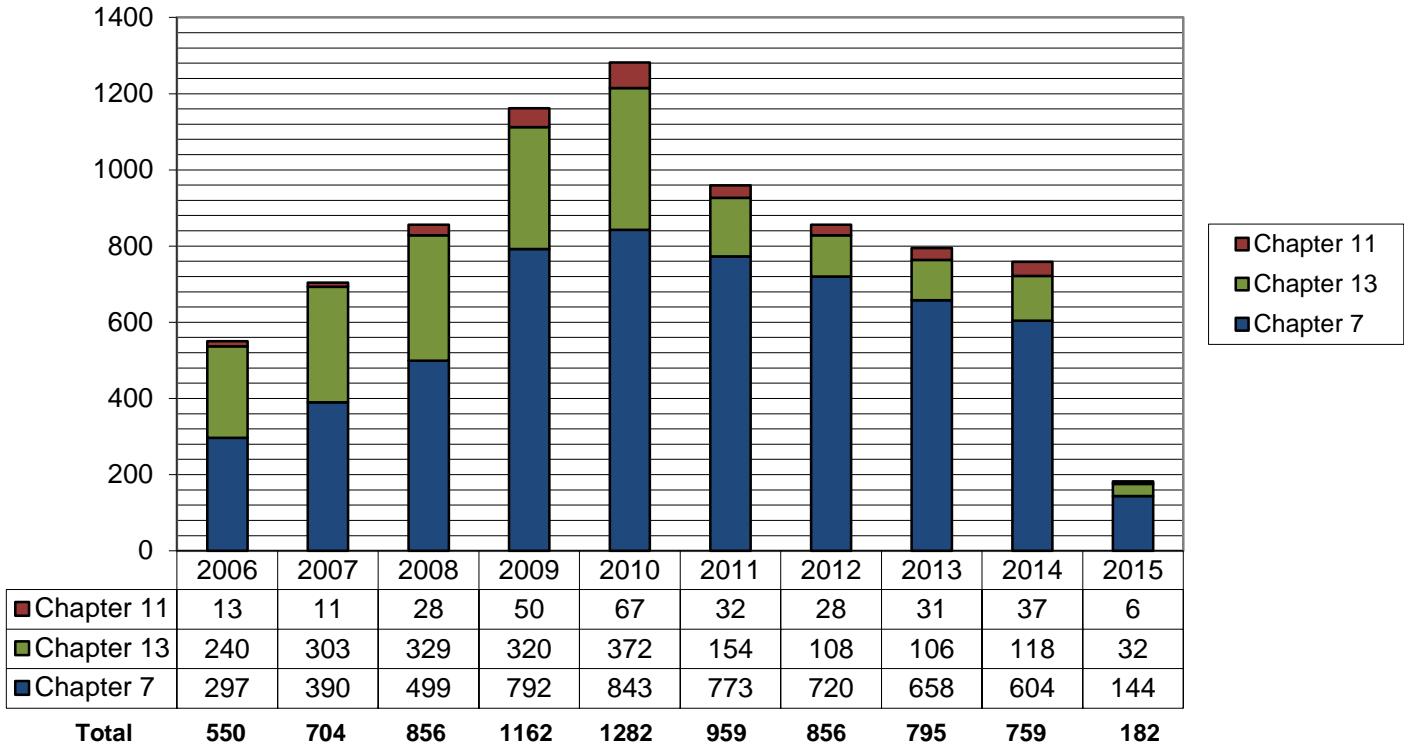


Pro Se Filings February 2015

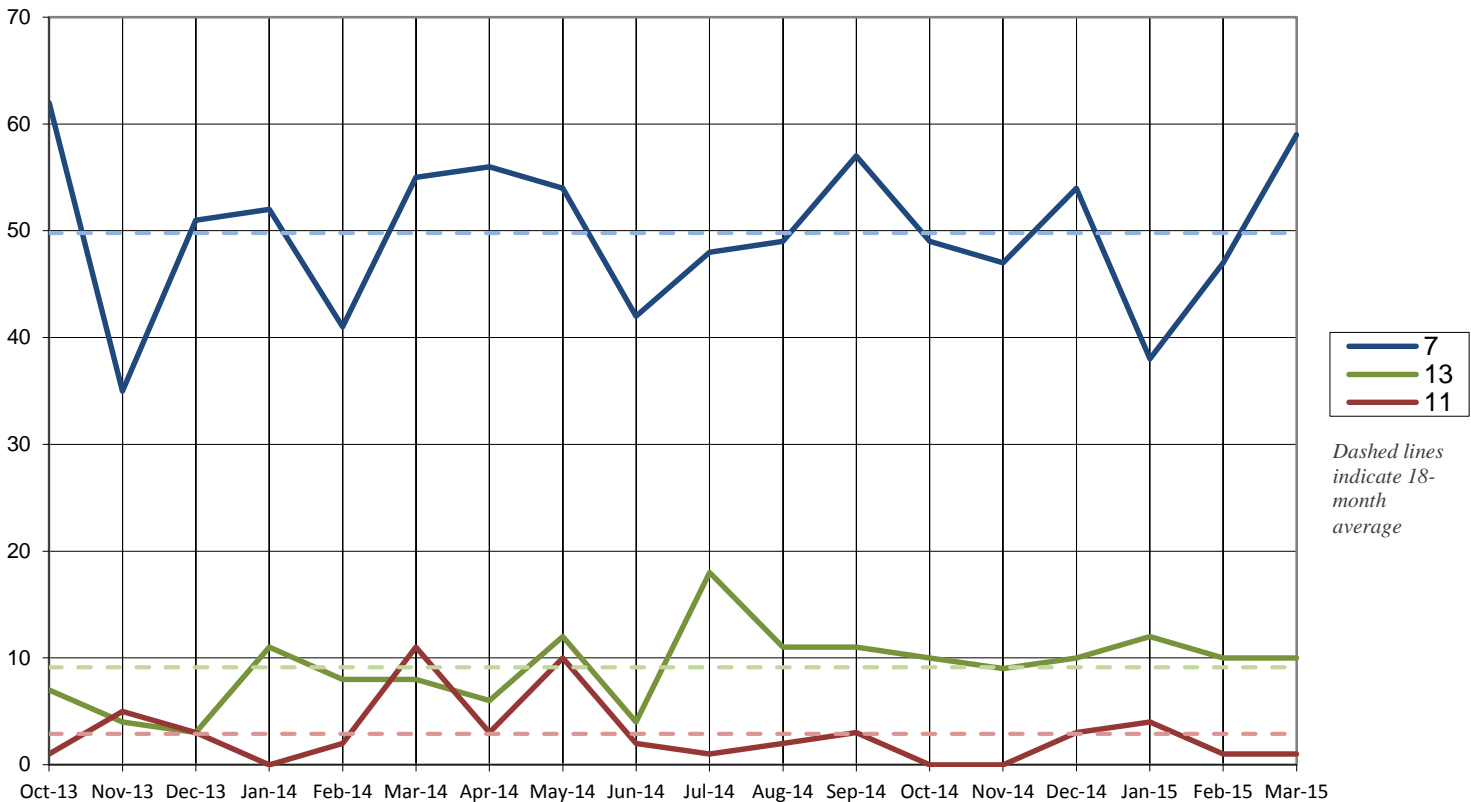
	Total	Pro Se
Ch. 7	85	19
Ch. 13	22	6
Ch. 11	5	1



Total Cases Filed per Year

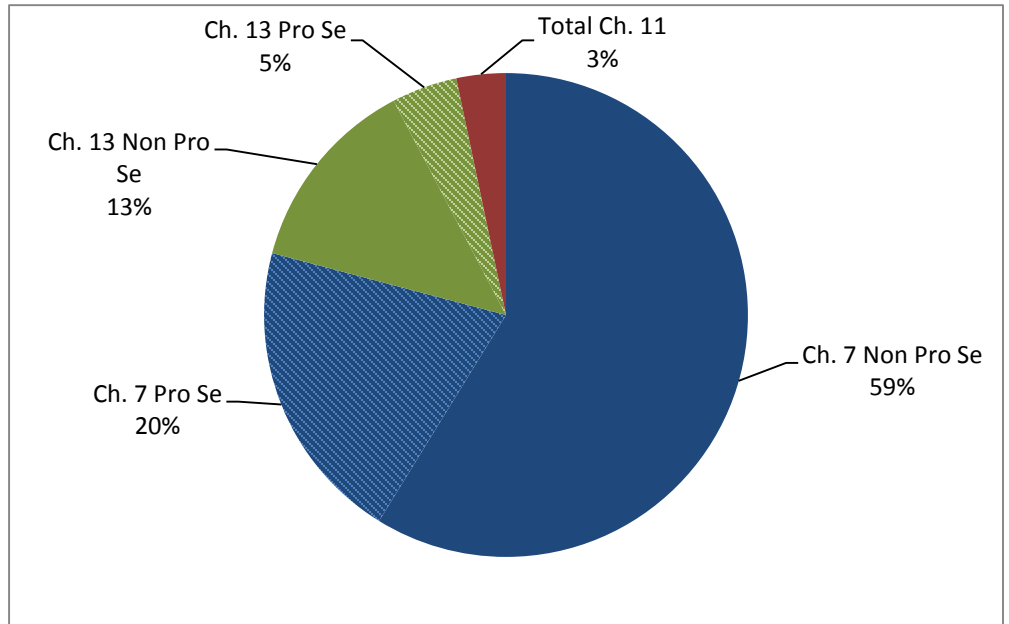


Cases Filed Per Month by Chapter - 18 months



Pro Se Filings through March 2015

	Total	Pro Se
Ch. 7	144	37
Ch. 13	32	8
Ch. 11	6	1



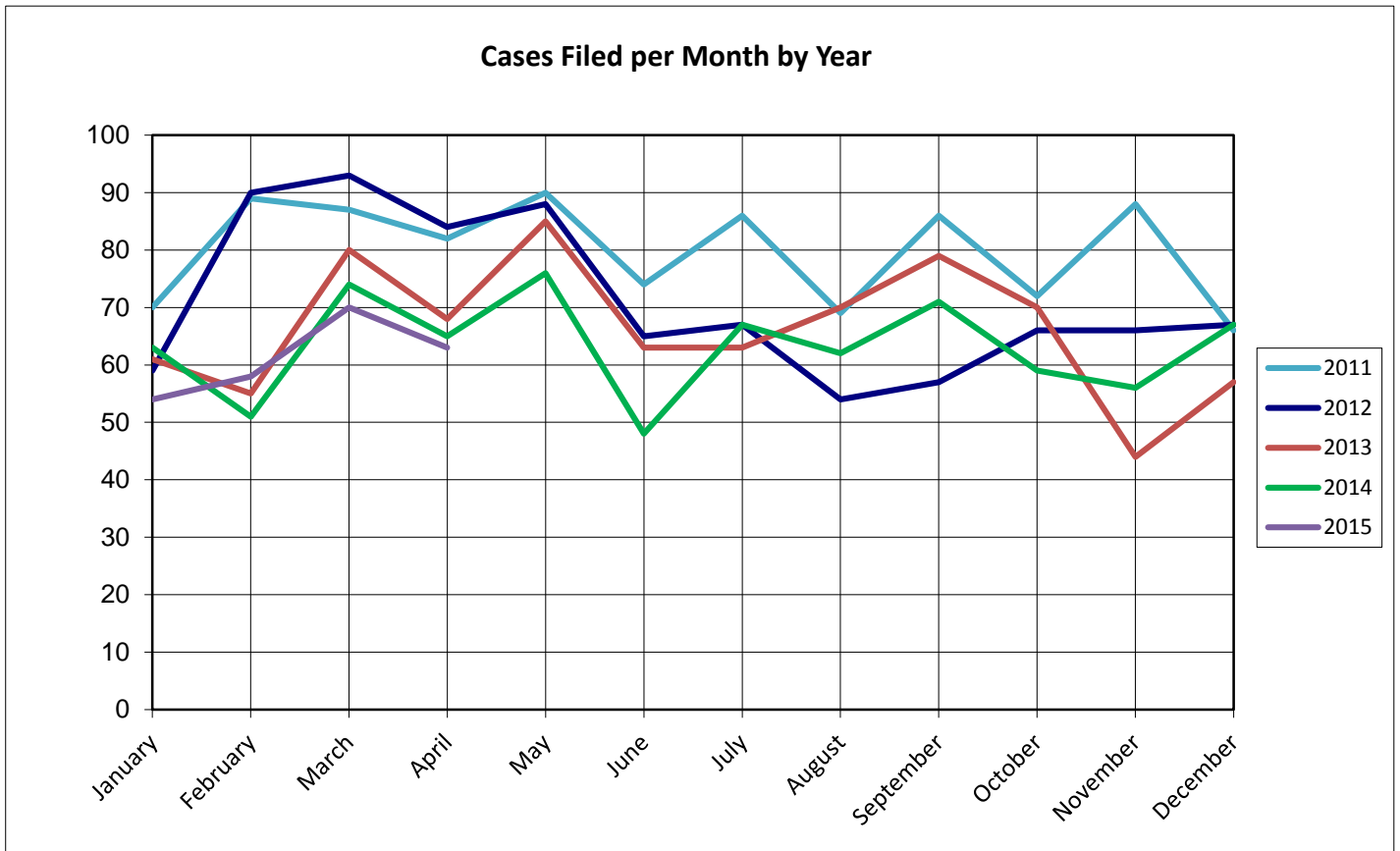
United States Bankruptcy Court for the District of Columbia

Report on Bankruptcy Case Filings April 2015

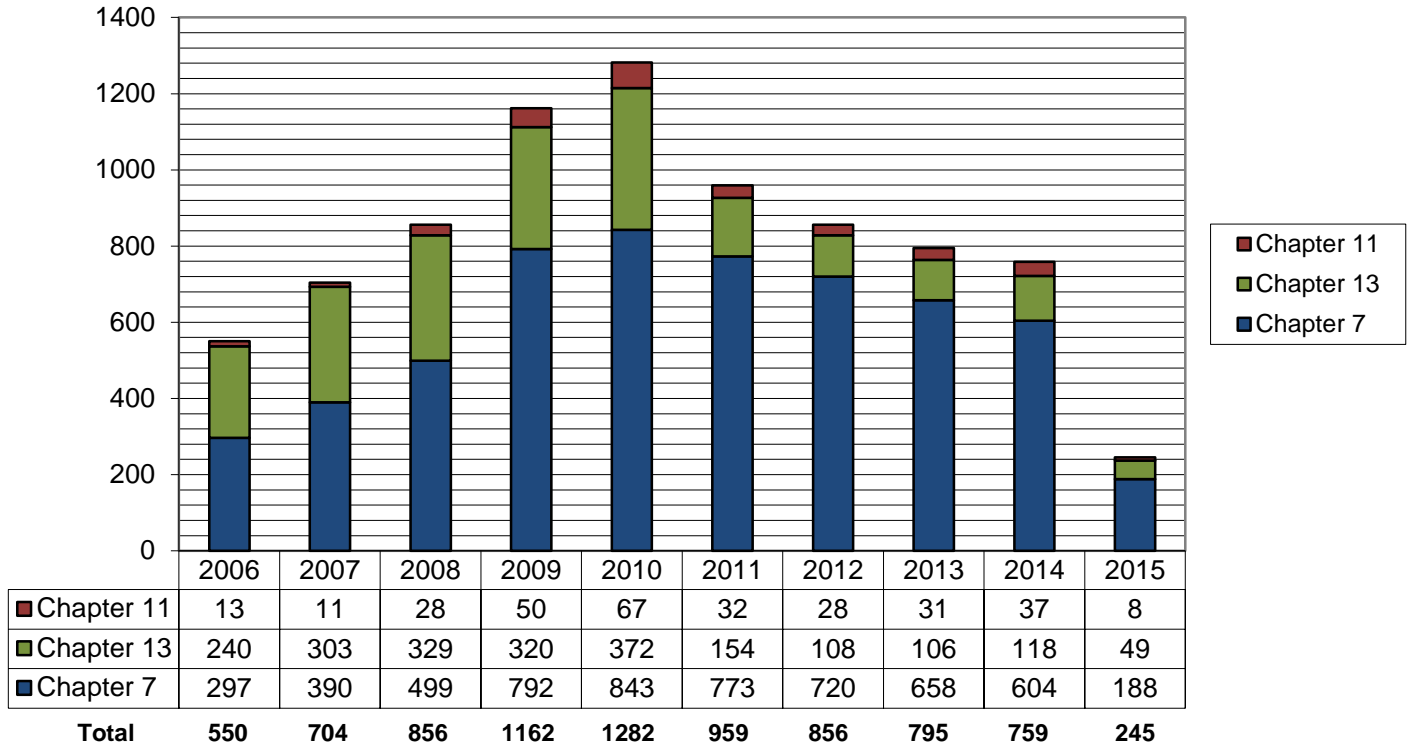
	Month Total	Year Total	2014 YTD Total
Ch. 7	44	188	204 (-16)
Ch. 13	17	49	33 (+16)
Ch. 11	2	8	16 (-8)
	63	245	253 (-8)

As of April 30, 2015

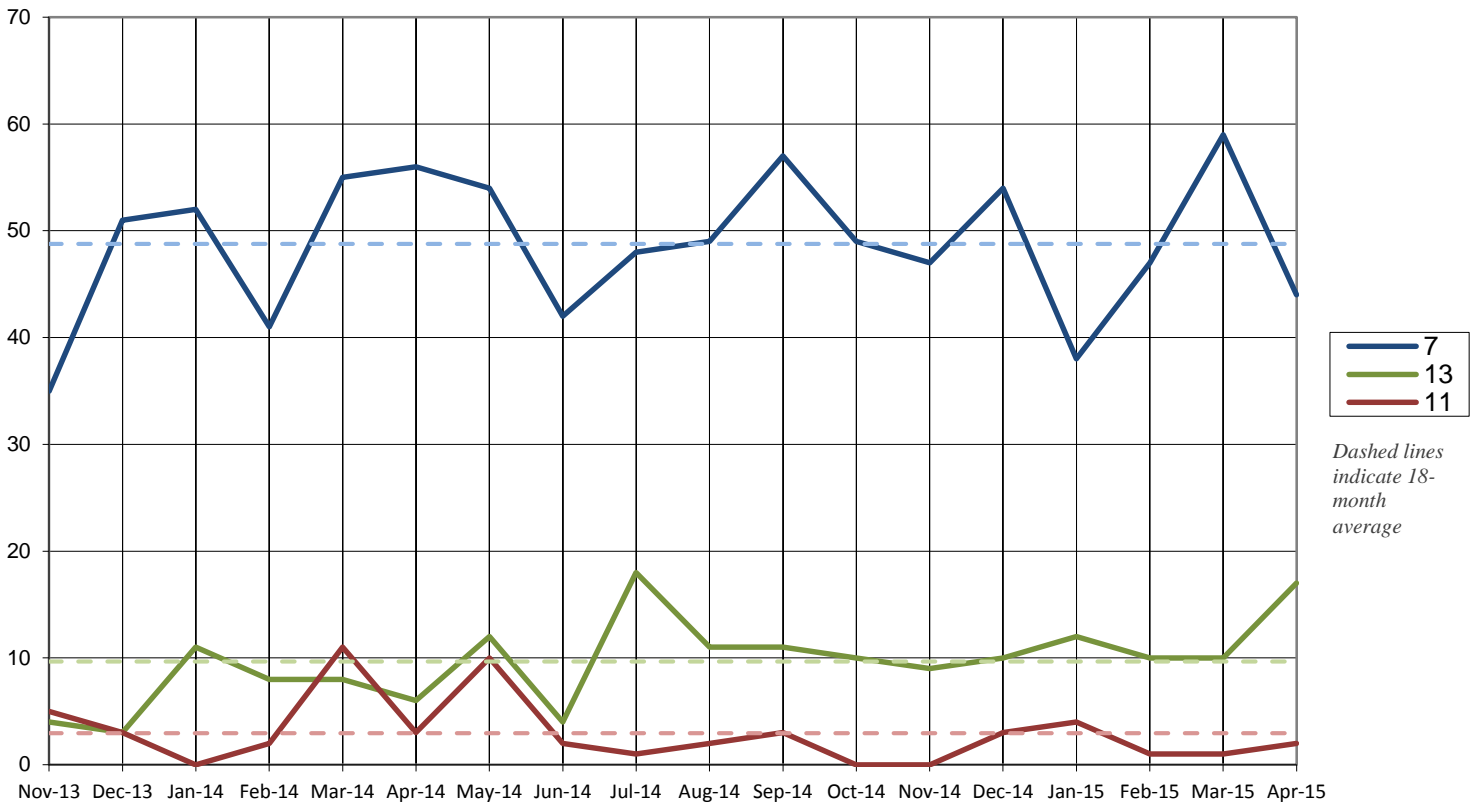
- ◆ The projected total cases for 2015 is **745**
- ◆ Compared to 2013, filings decreased by **3.2%**
- ◆ An average of **2** cases were filed each day



Total Cases Filed per Year

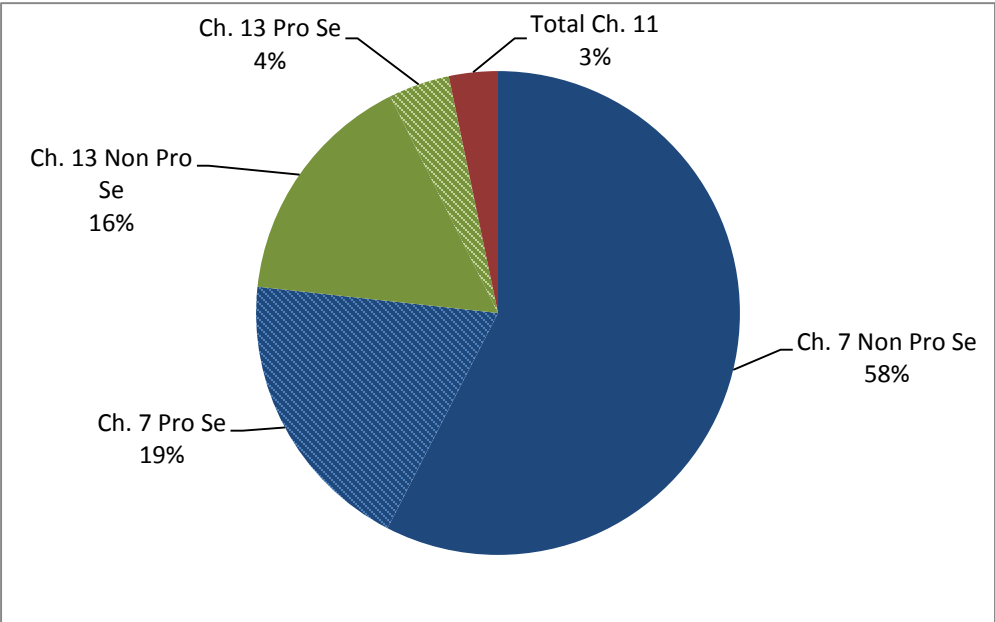


Cases Filed Per Month by Chapter - 18 months



Pro Se Filings through April 2015

	Total	Pro Se
Ch. 7	188	47
Ch. 13	49	10
Ch. 11	8	2



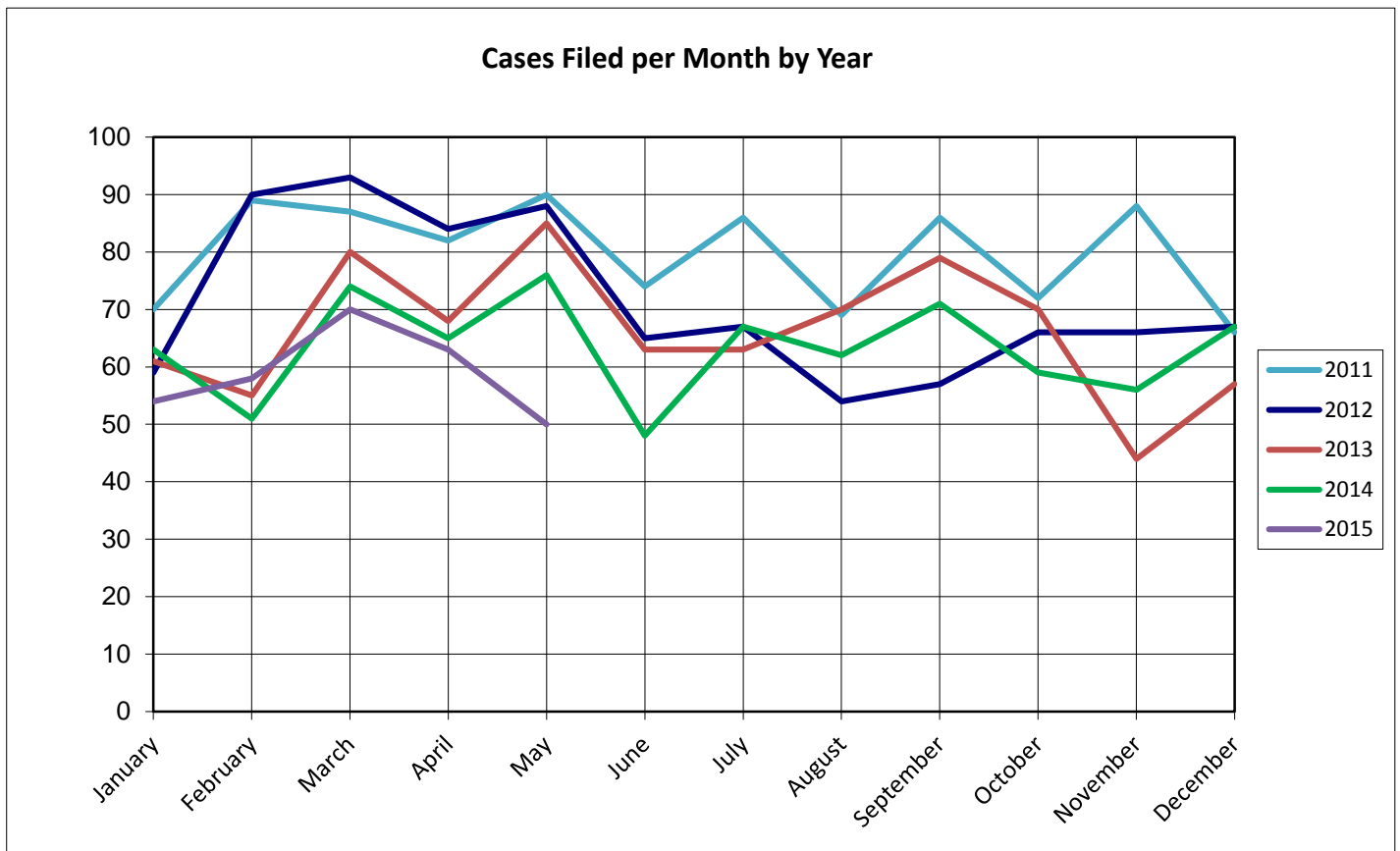
United States Bankruptcy Court for the District of Columbia

Report on Bankruptcy Case Filings May 2015

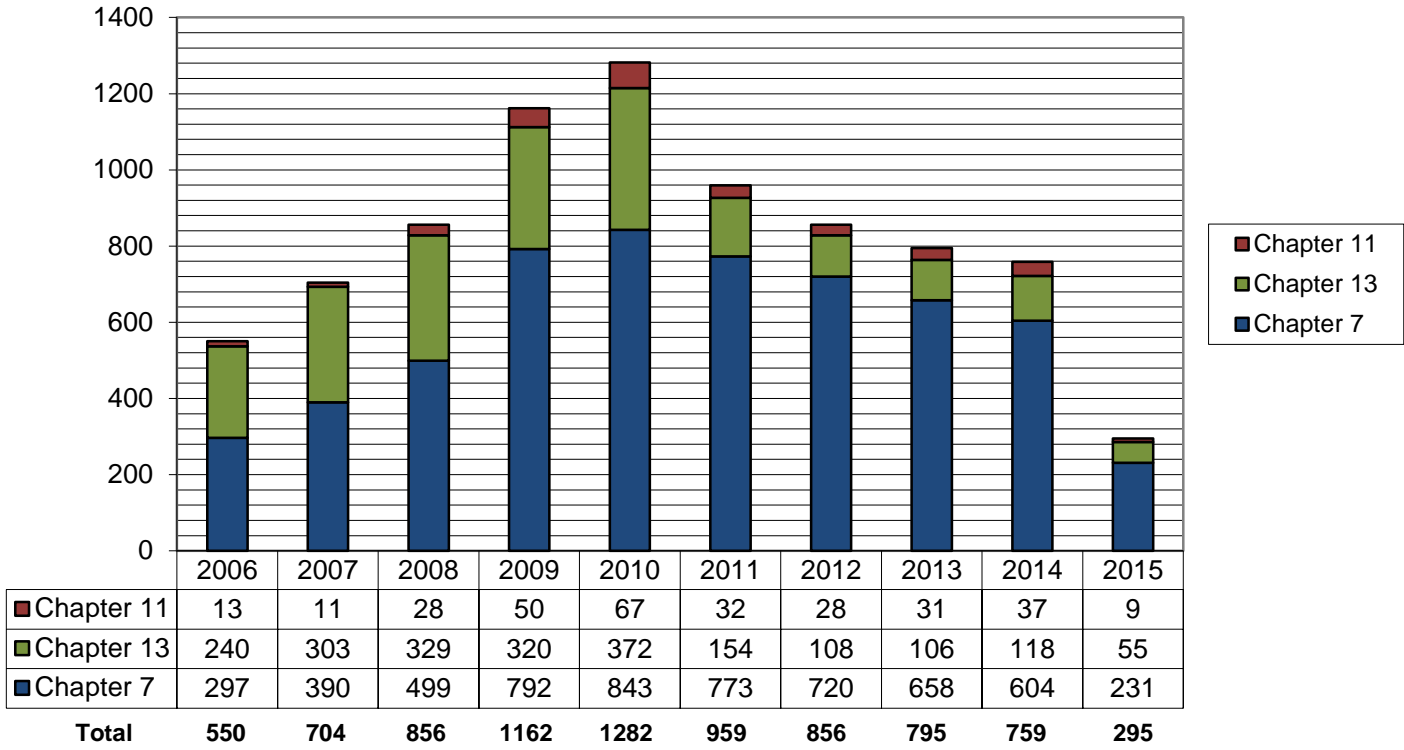
	Month Total	2015 YTD Total	2014 YTD Total
Ch. 7	43	231	258 (-27)
Ch. 13	6	55	45 (+10)
Ch. 11	1	9	26 (-17)
	50	329	253 (-34)

As of May 31, 2015

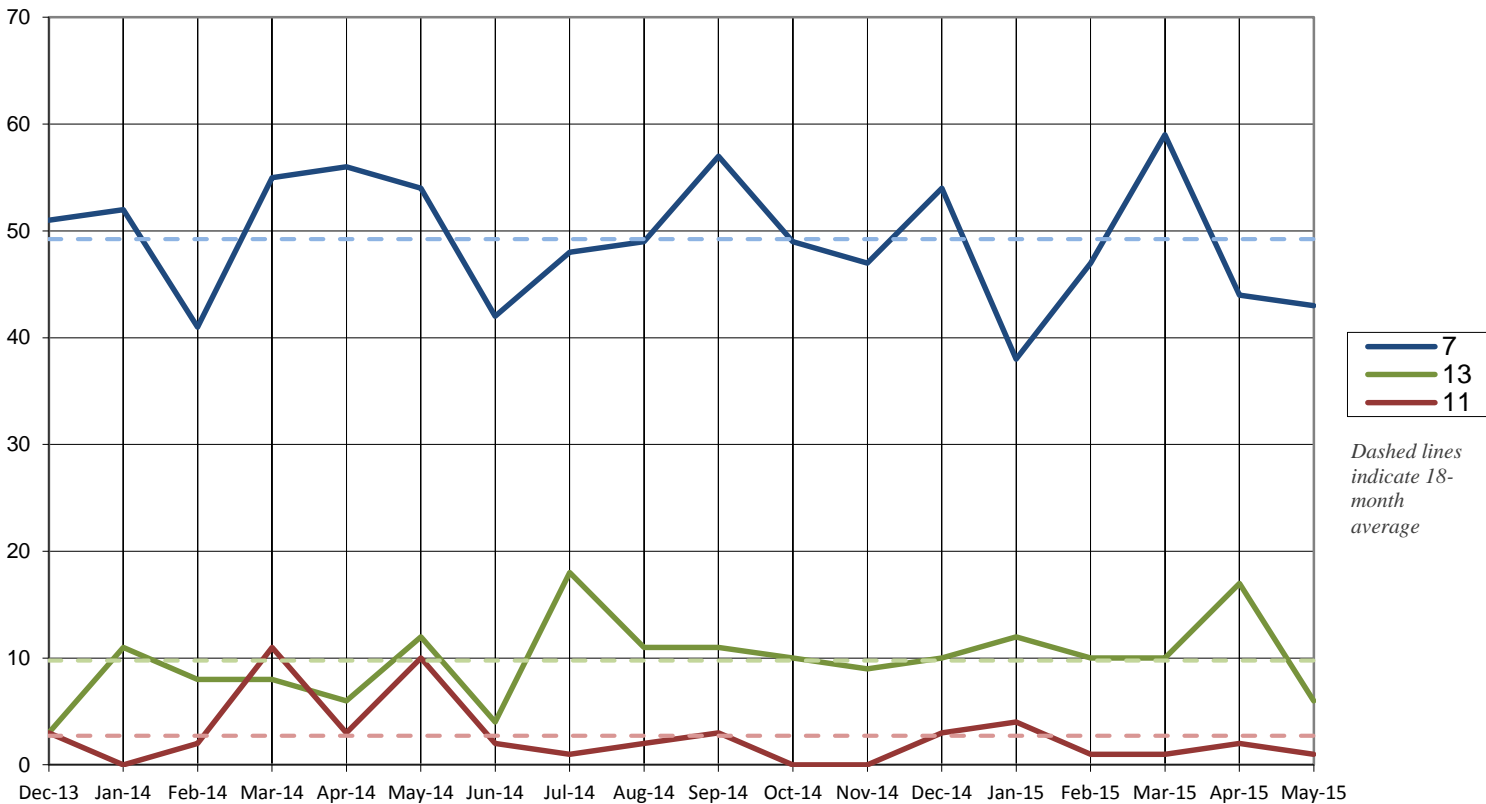
- ◆ The projected total cases for 2015 is **713**
- ◆ Compared to 2013, filings decreased by **10.3%**
- ◆ An average of **2** cases were filed each day



Total Cases Filed per Year

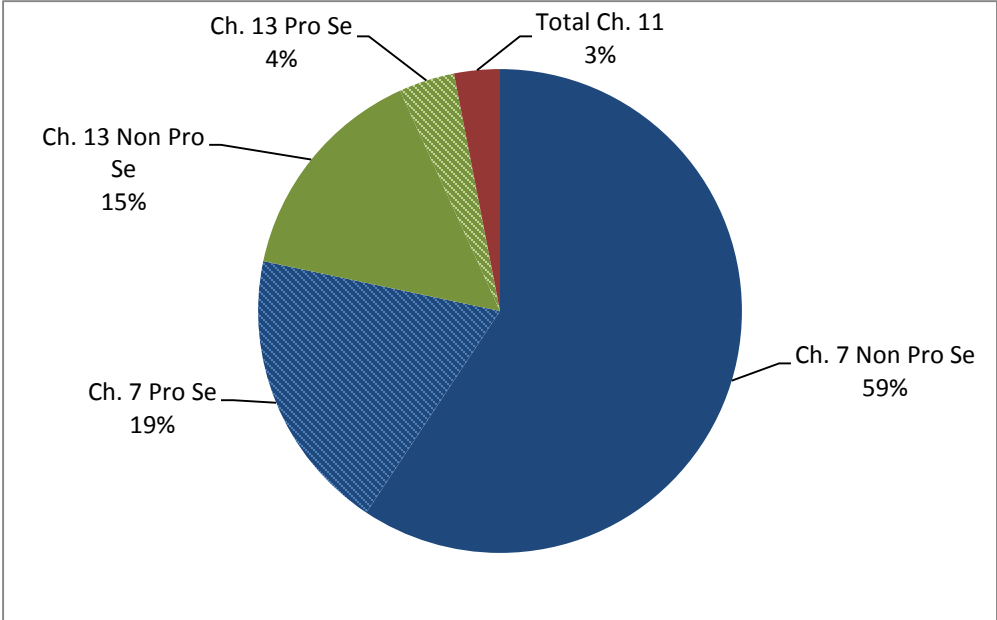


Cases Filed Per Month by Chapter - 18 months



Pro Se Filings through April 2015

	Total	Pro Se
Ch. 7	231	56
Ch. 13	55	11
Ch. 11	9	2



United States Bankruptcy Court for the District of Columbia

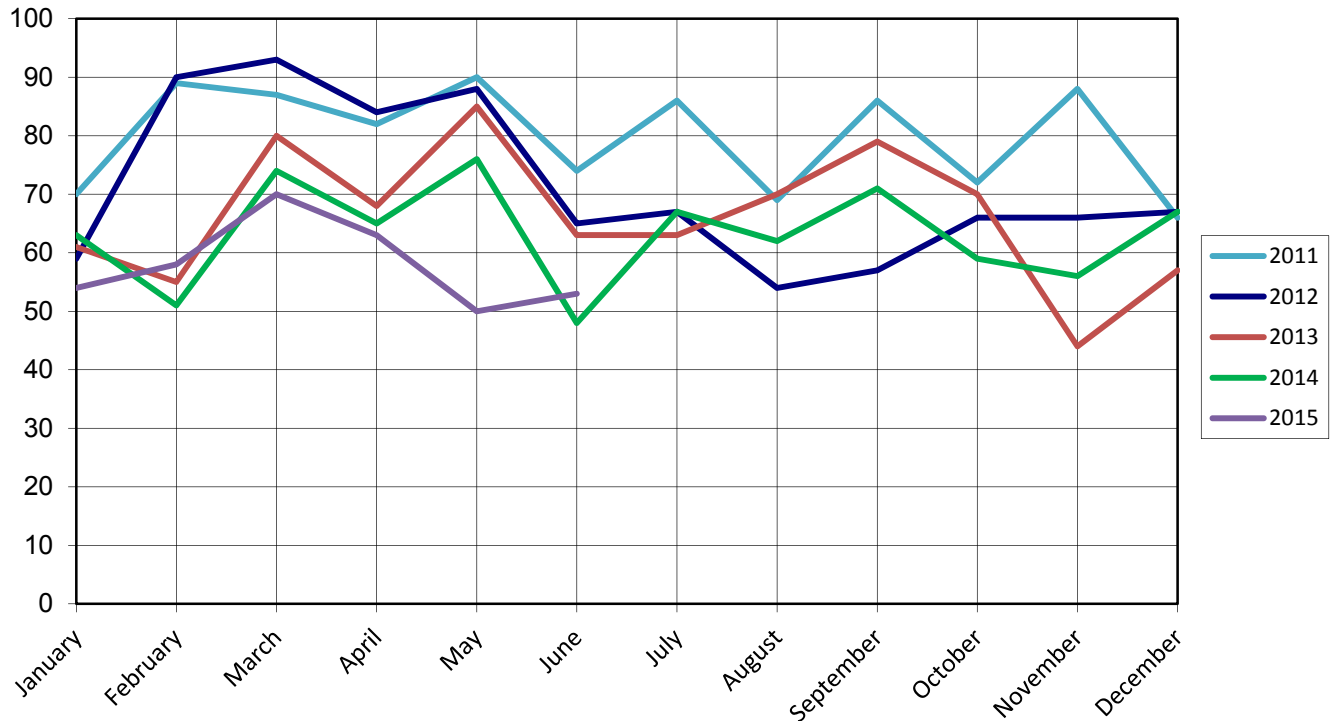
Report on Bankruptcy Case Filings June 2015

	Month Total	2015 YTD Total	2014 YTD Total
Ch. 7	41	272	300 (-28)
Ch. 13	12	55	49 (+18)
Ch. 11	0	9	28 (-19)
	53	348	377 (-29)

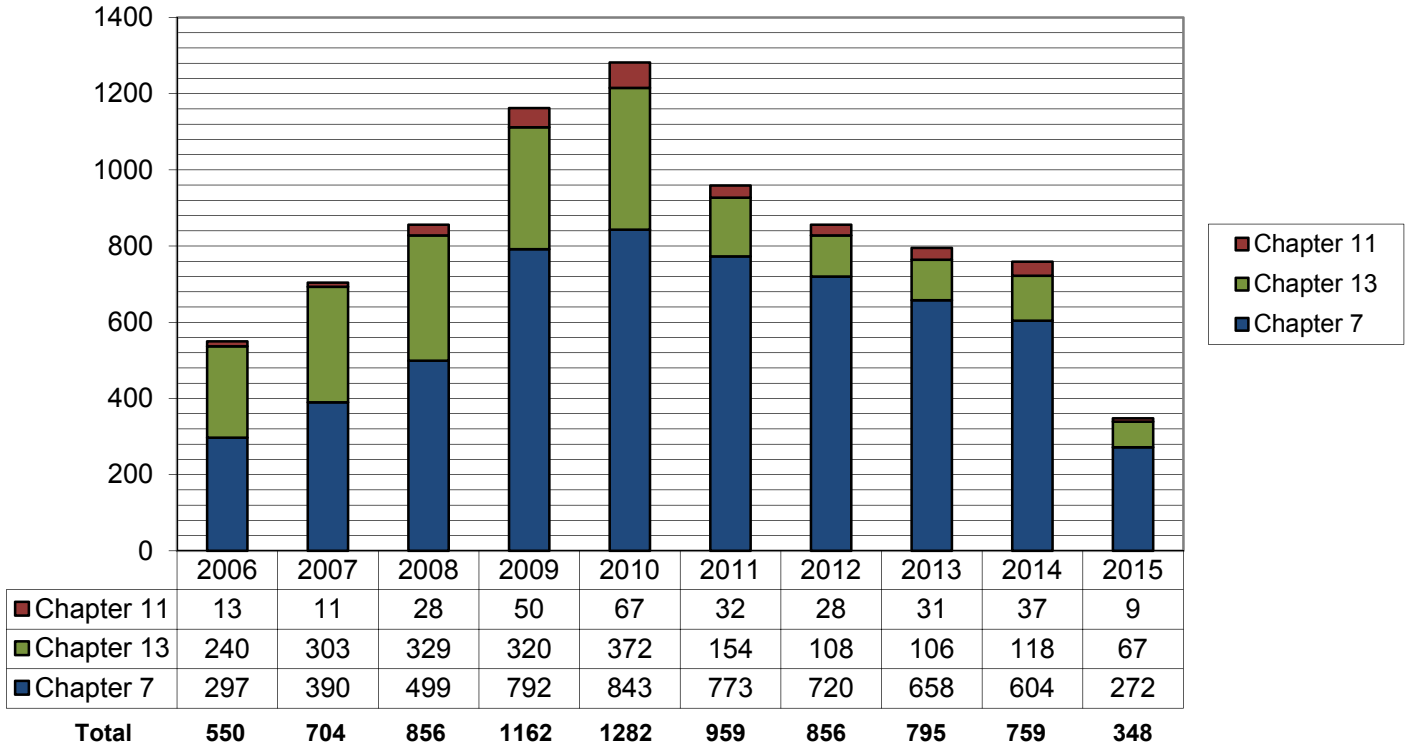
As of June 30, 2015

- ◆ The projected total cases for 2015 is **702**
- ◆ Compared to 2013, filings decreased by **7.7%**
- ◆ An average of **1.9** cases were filed each day

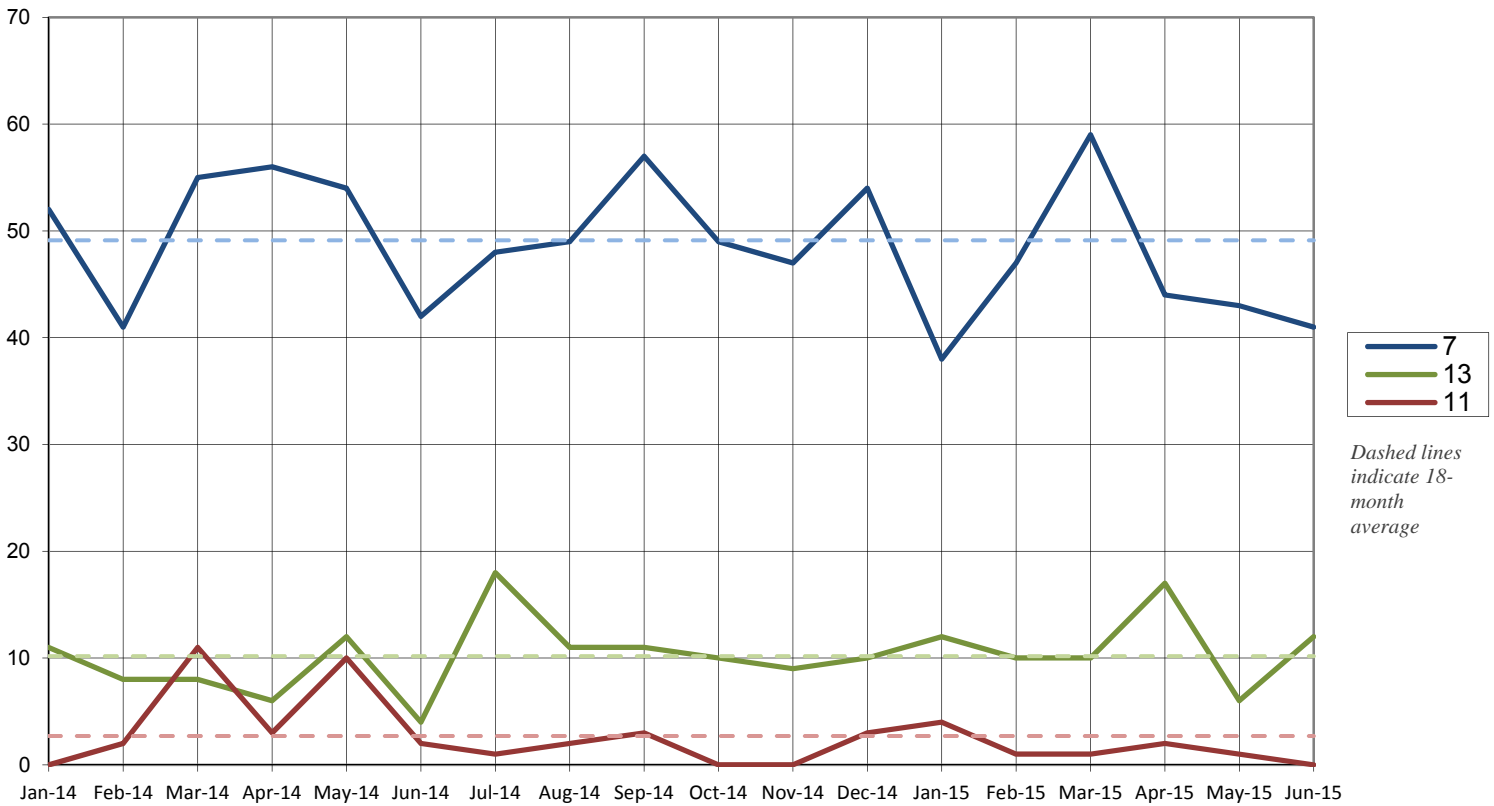
Cases Filed per Month by Year



Total Cases Filed per Year

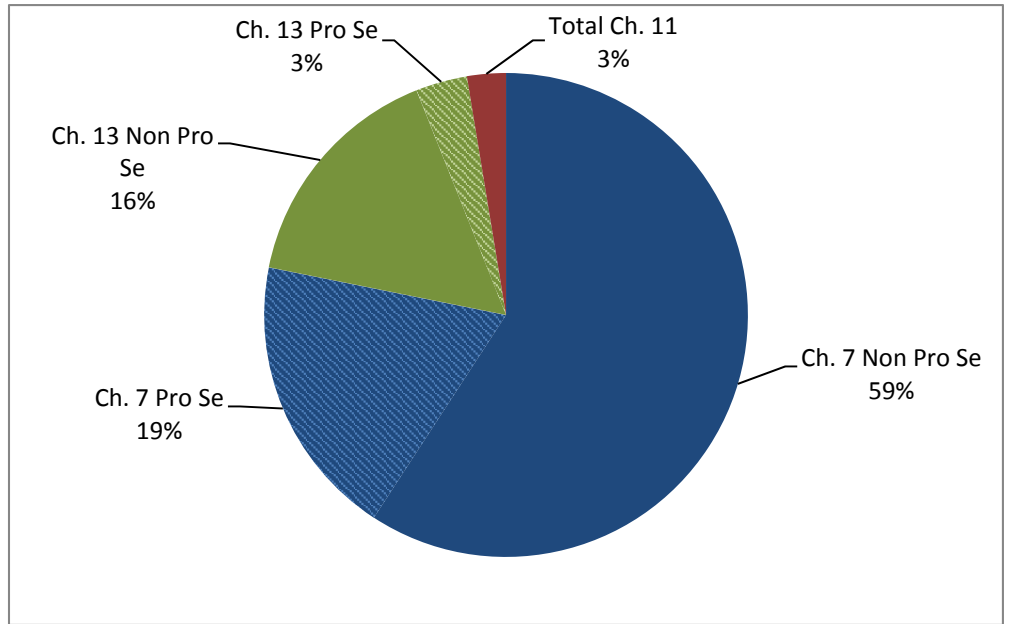


Cases Filed Per Month by Chapter - 18 months



Pro Se Filings through June 2015

	Total	Pro Se
Ch. 7	272	66
Ch. 13	67	12
Ch. 11	9	2



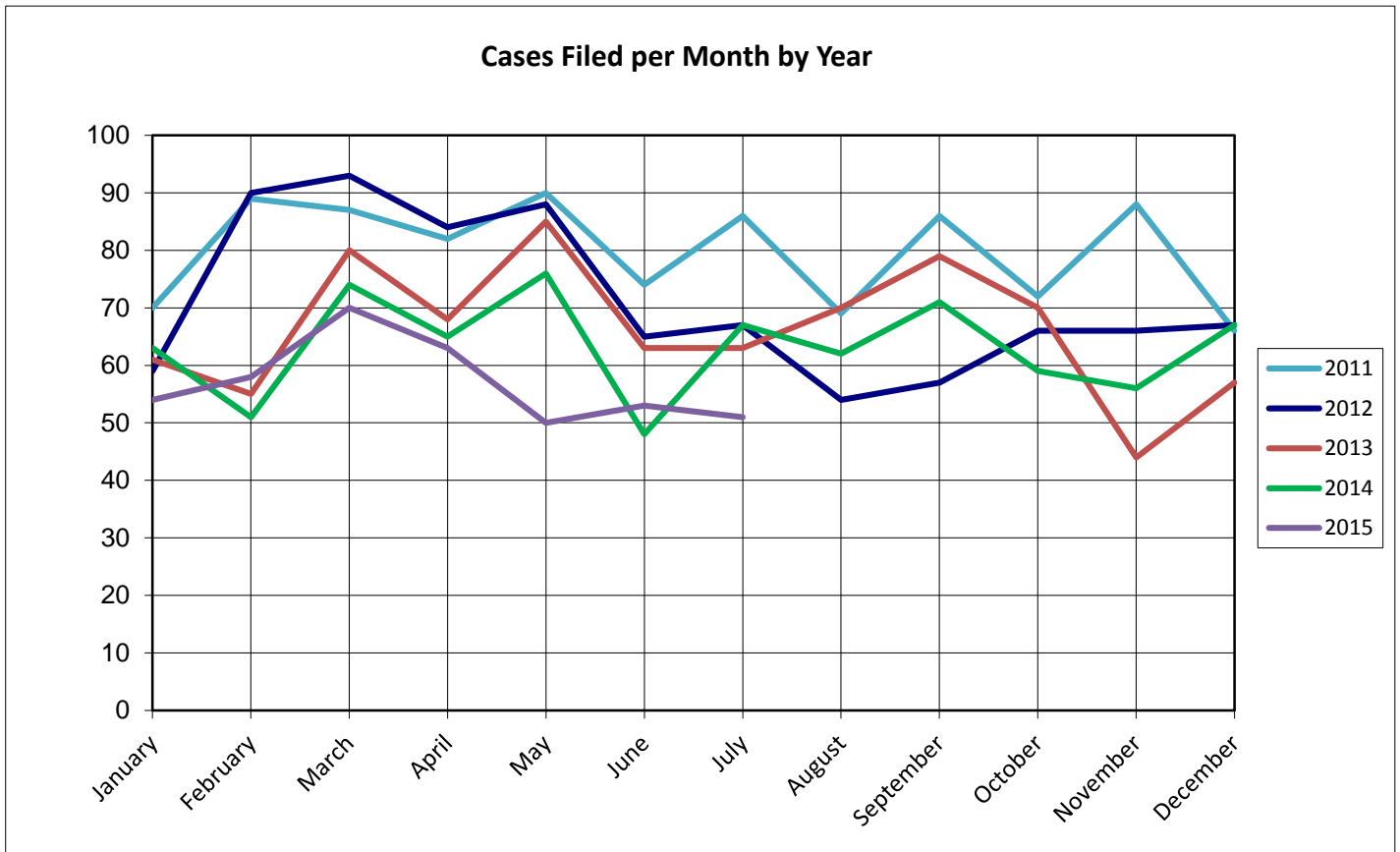
United States Bankruptcy Court for the District of Columbia

Report on Bankruptcy Case Filings July 2015

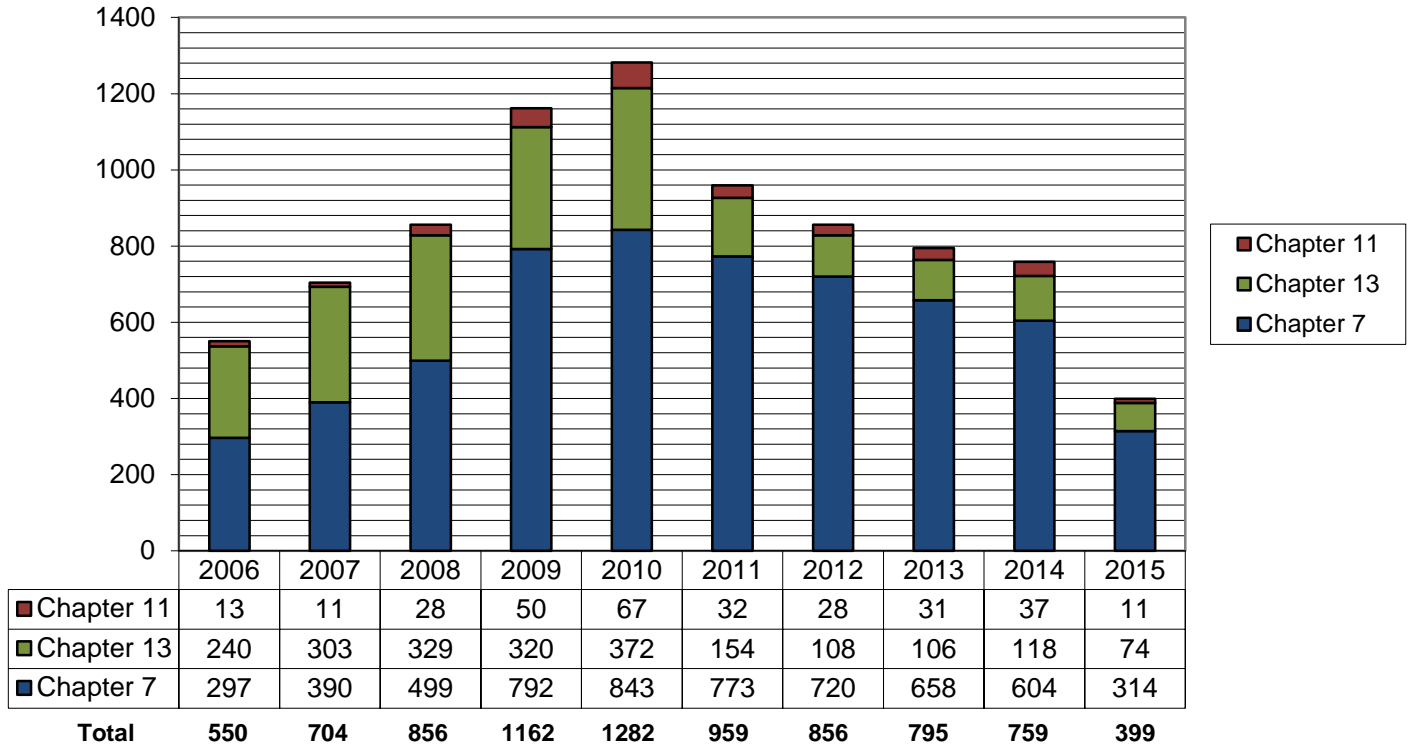
	Month Total	2015 YTD Total	2014 YTD Total
Ch. 7	42	314	348 (-34)
Ch. 13	7	74	67 (+7)
Ch. 11	2	11	29 (-18)
	51	399	444 (-45)

As of July 31, 2015

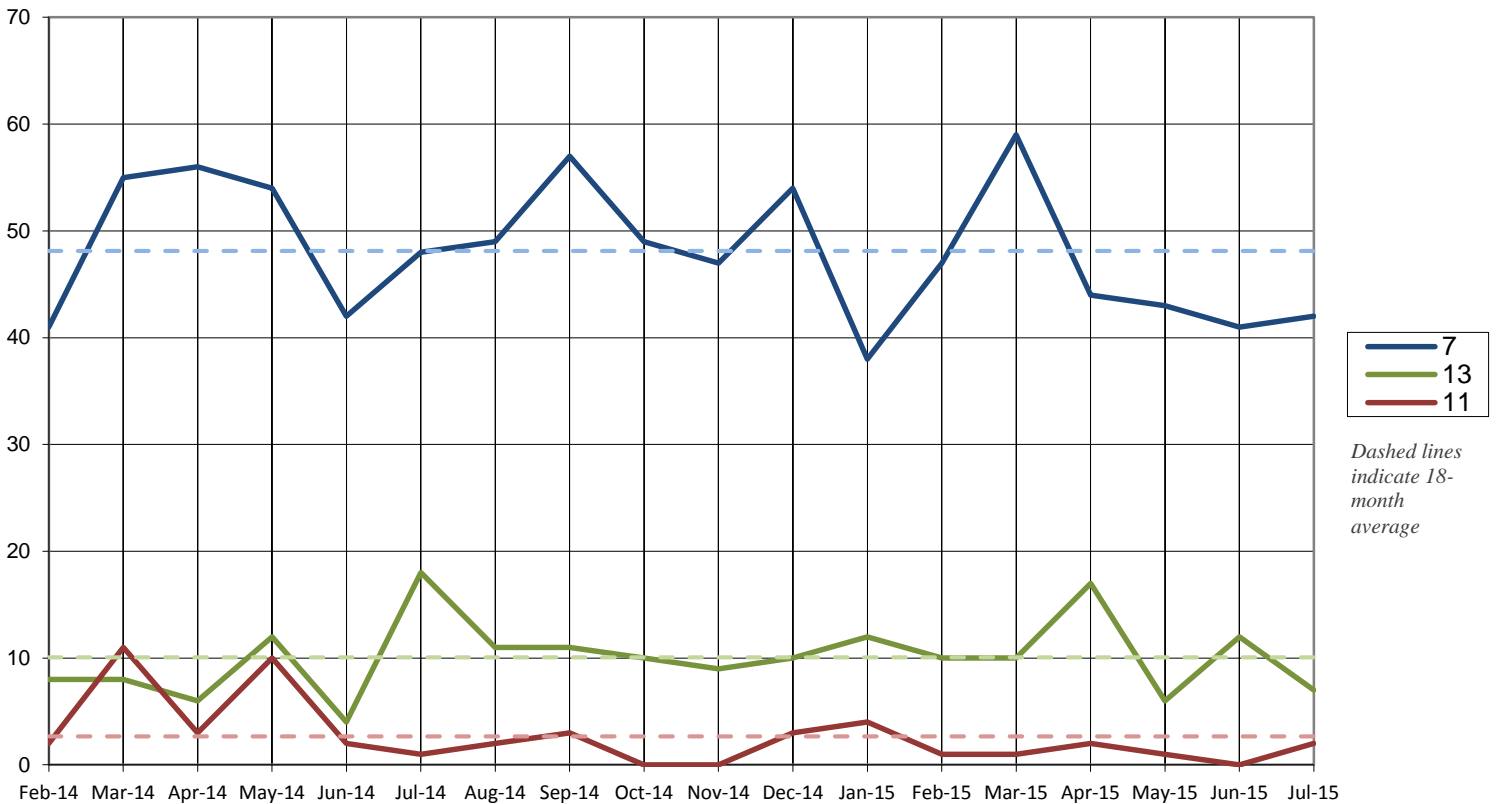
- ◆ The projected total cases for 2015 is **687**
- ◆ Compared to 2013, filings decreased by **10.1%**
- ◆ An average of **1.9** cases were filed each day



Total Cases Filed per Year

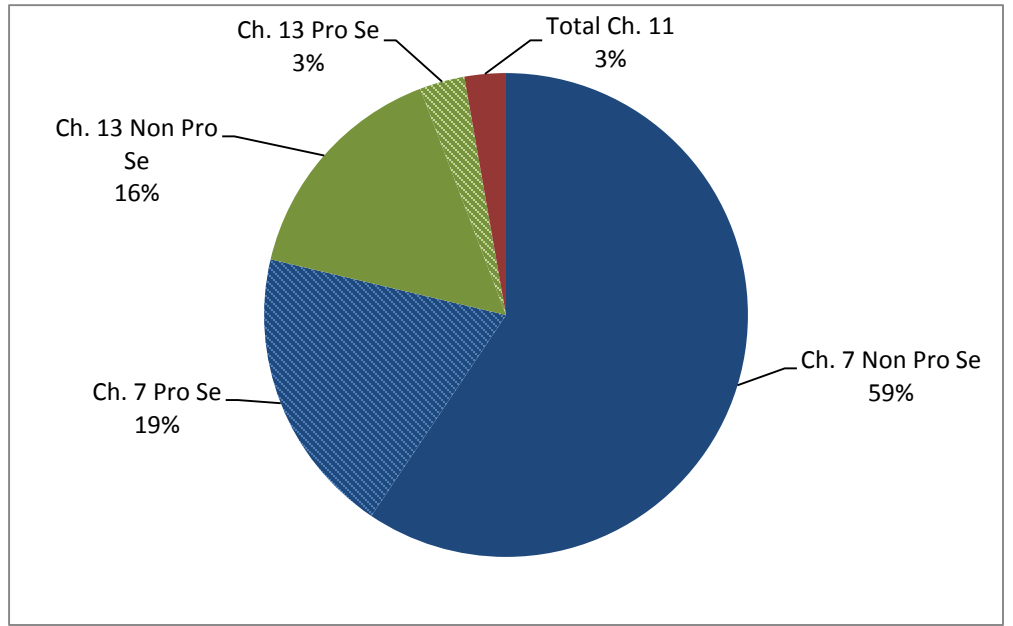


Cases Filed Per Month by Chapter - 18 months



Pro Se Filings through July 2015

	Total	Pro Se
Ch. 7	314	77
Ch. 13	74	12
Ch. 11	11	2



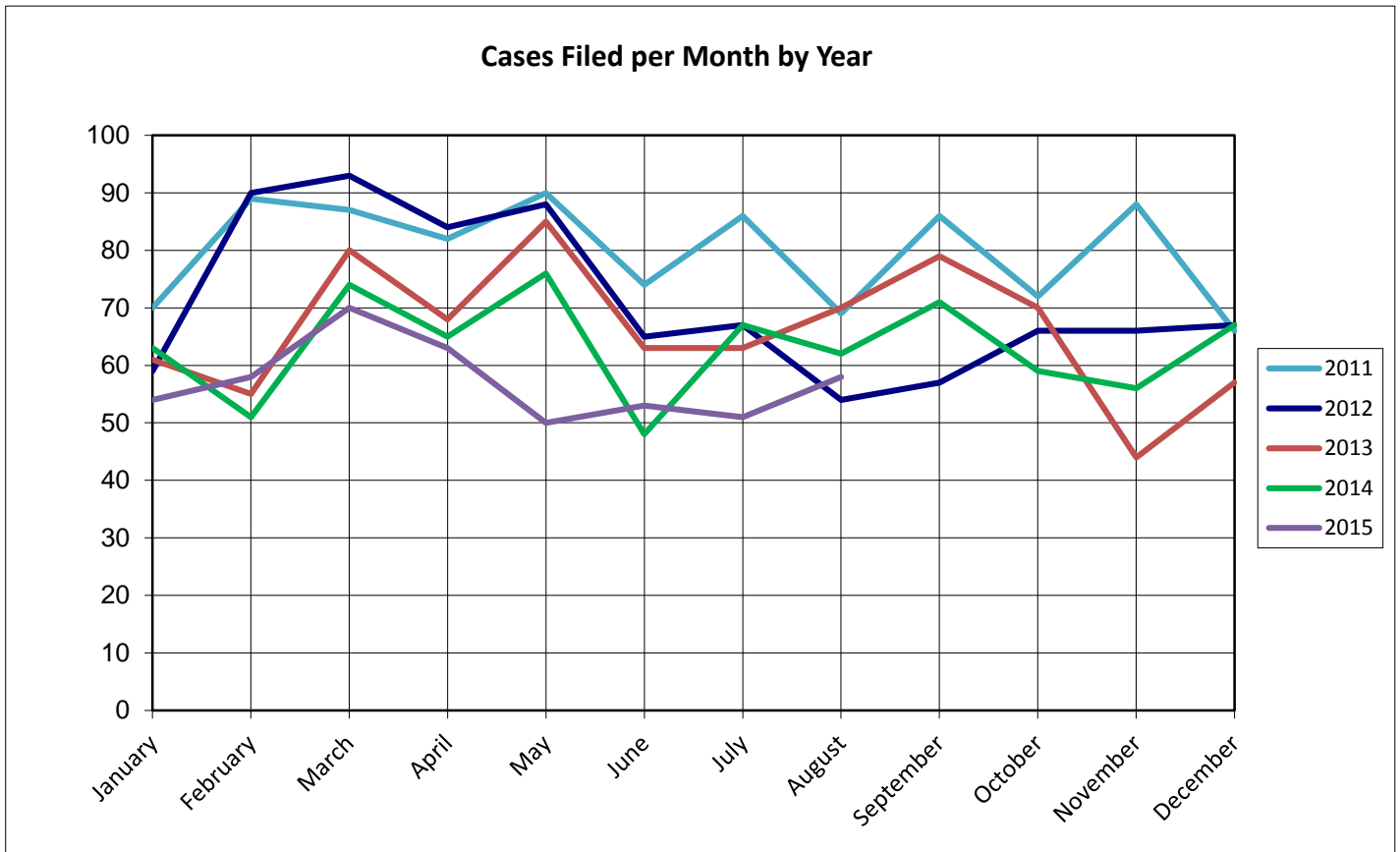
United States Bankruptcy Court for the District of Columbia

Report on Bankruptcy Case Filings August 2015

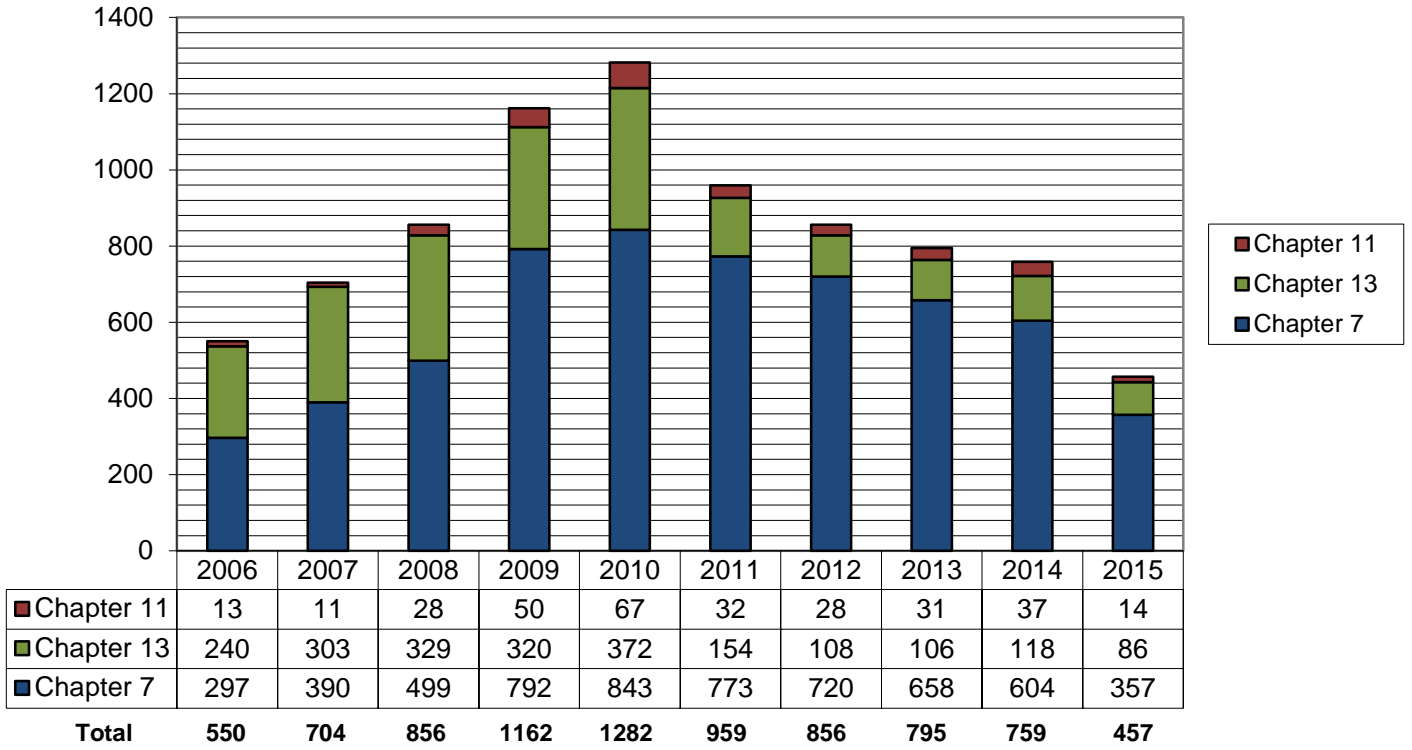
	Month Total	2015 YTD Total	2014 YTD Total
Ch. 7	43	357	397 (-40)
Ch. 13	12	86	78 (+8)
Ch. 11	3	14	31 (-17)
	58	457	506 (-49)

As of August 31, 2015

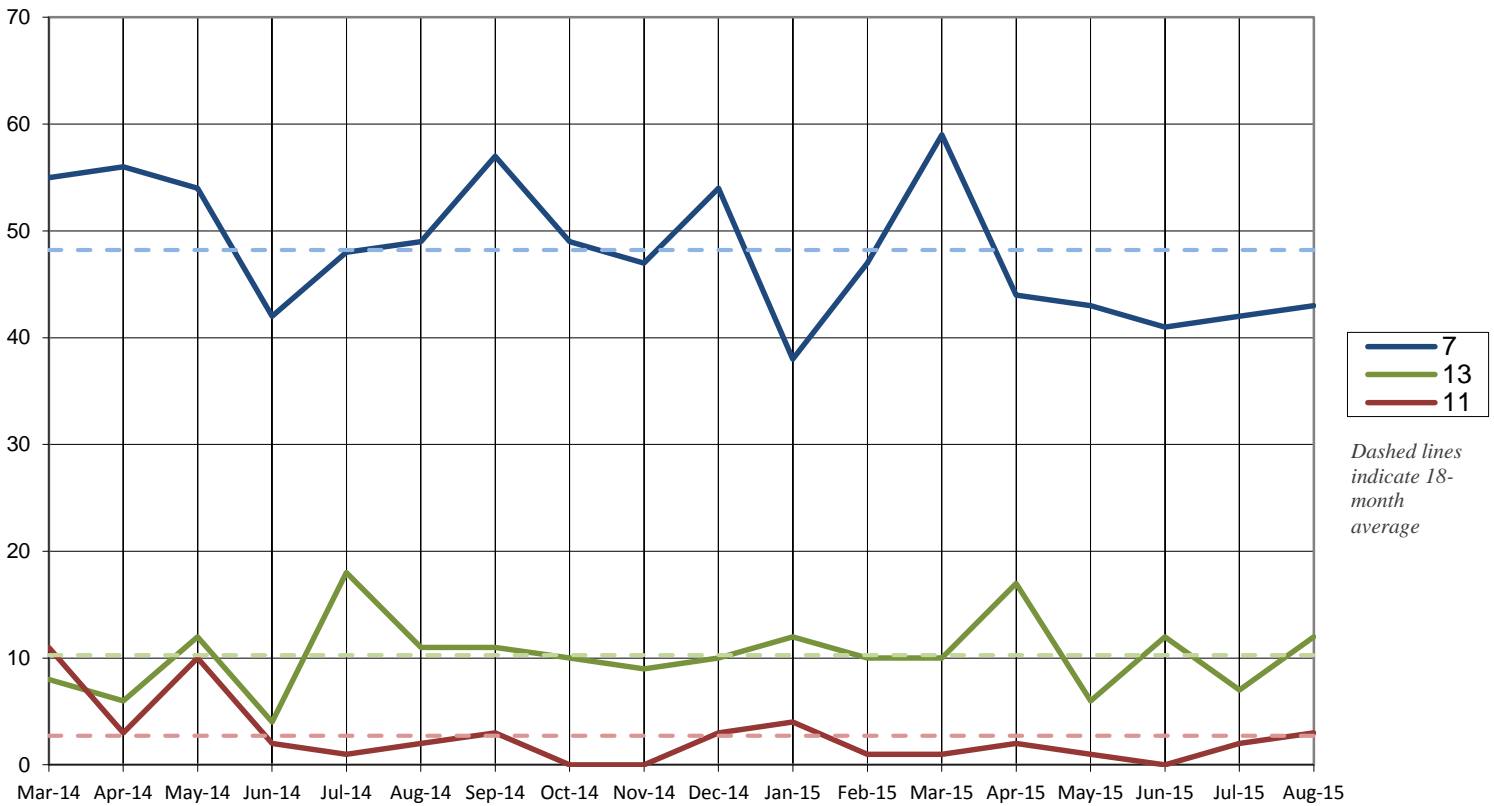
- ◆ The projected total cases for 2015 is **686**
- ◆ Compared to 2013, filings decreased by **9.7%**
- ◆ An average of **1.9** cases were filed each day



Total Cases Filed per Year

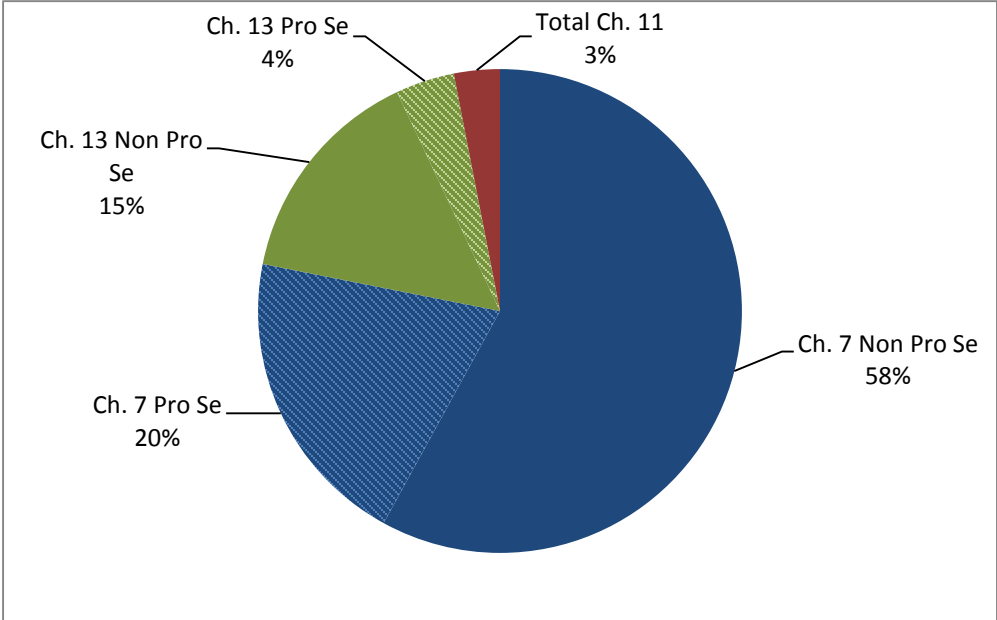


Cases Filed Per Month by Chapter - 18 months



Pro Se Filings through August 2015

	Total	Pro Se
Ch. 7	357	92
Ch. 13	86	18
Ch. 11	14	4



United States Bankruptcy Court for the District of Columbia

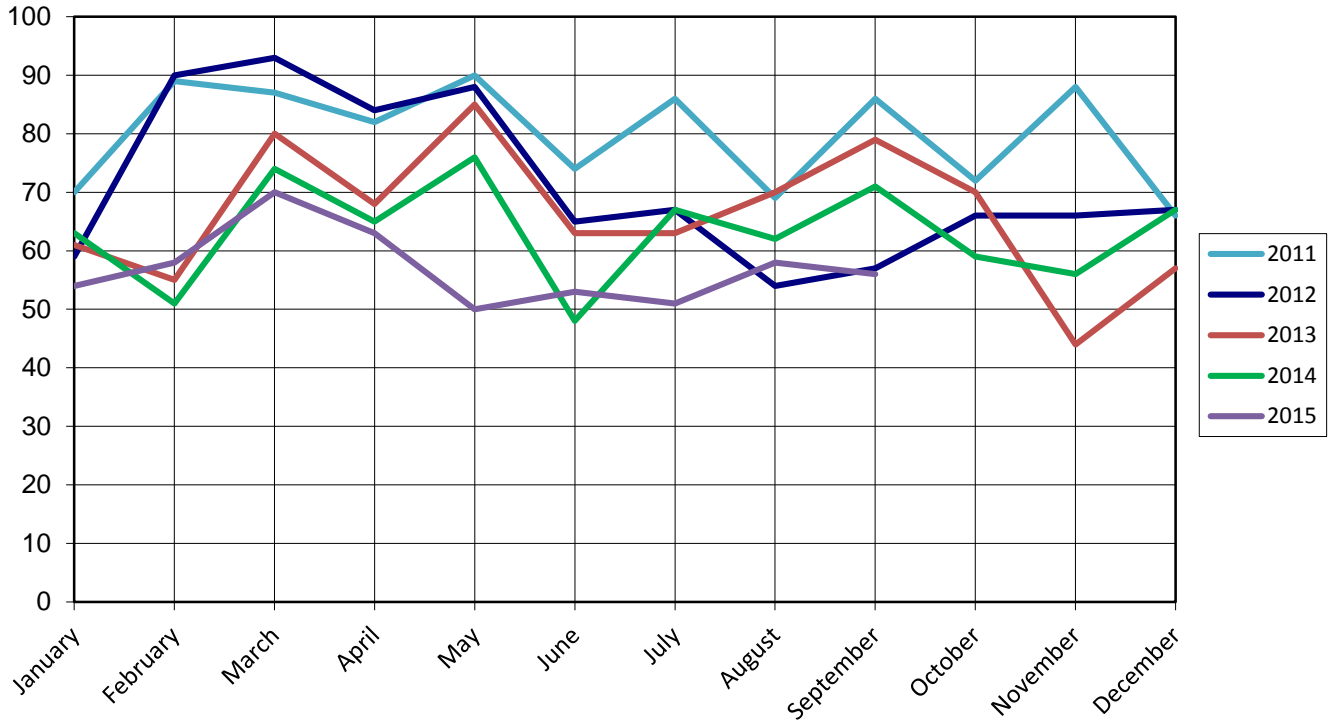
Report on Bankruptcy Case Filings September 2015

	Month Total	2015 YTD Total	2014 YTD Total
Ch. 7	42	399	454 (-55)
Ch. 13	12	98	89 (+9)
Ch. 11	2	16	34 (-18)
	58	513	577 (-64)

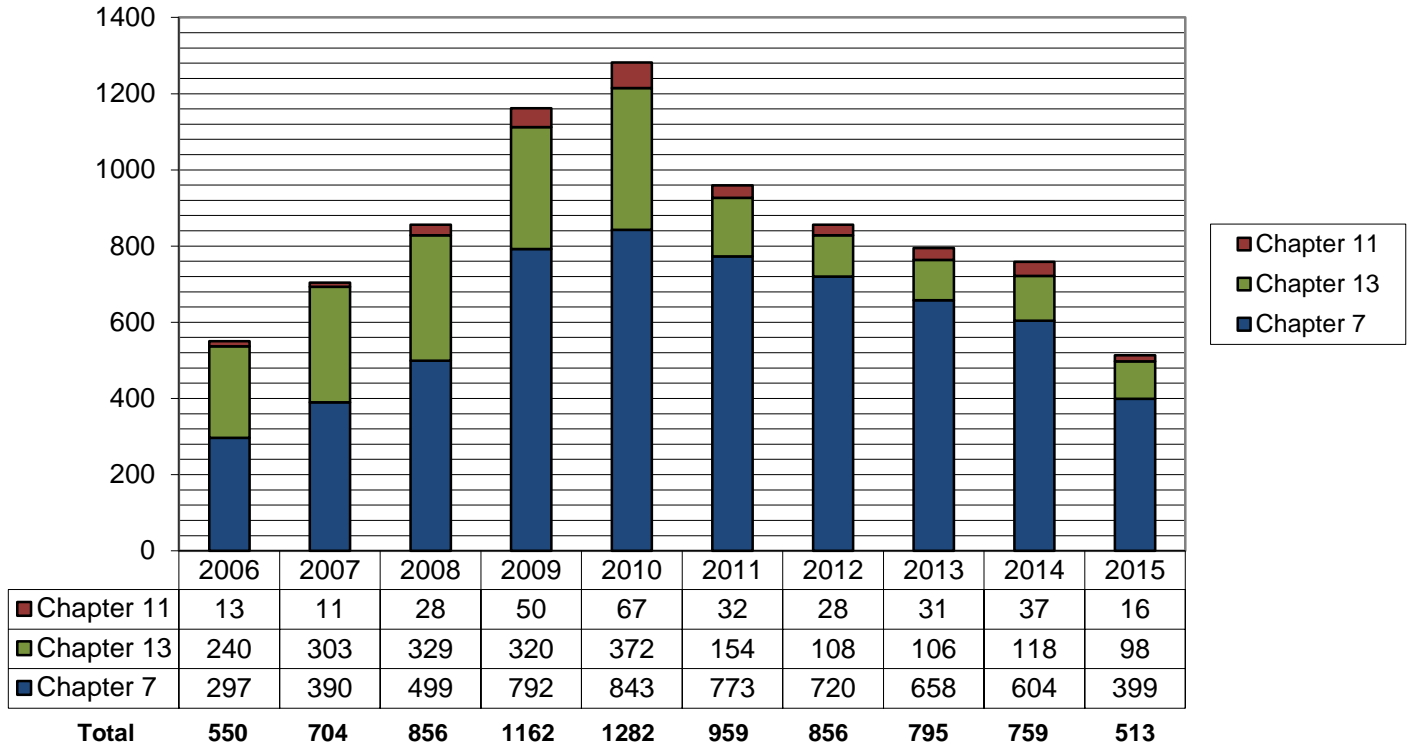
As of September 30, 2015

- ◆ The projected total cases for 2015 is **686**
- ◆ Compared to 2013, filings decreased by **11.1%**
- ◆ An average of **1.9** cases were filed each day

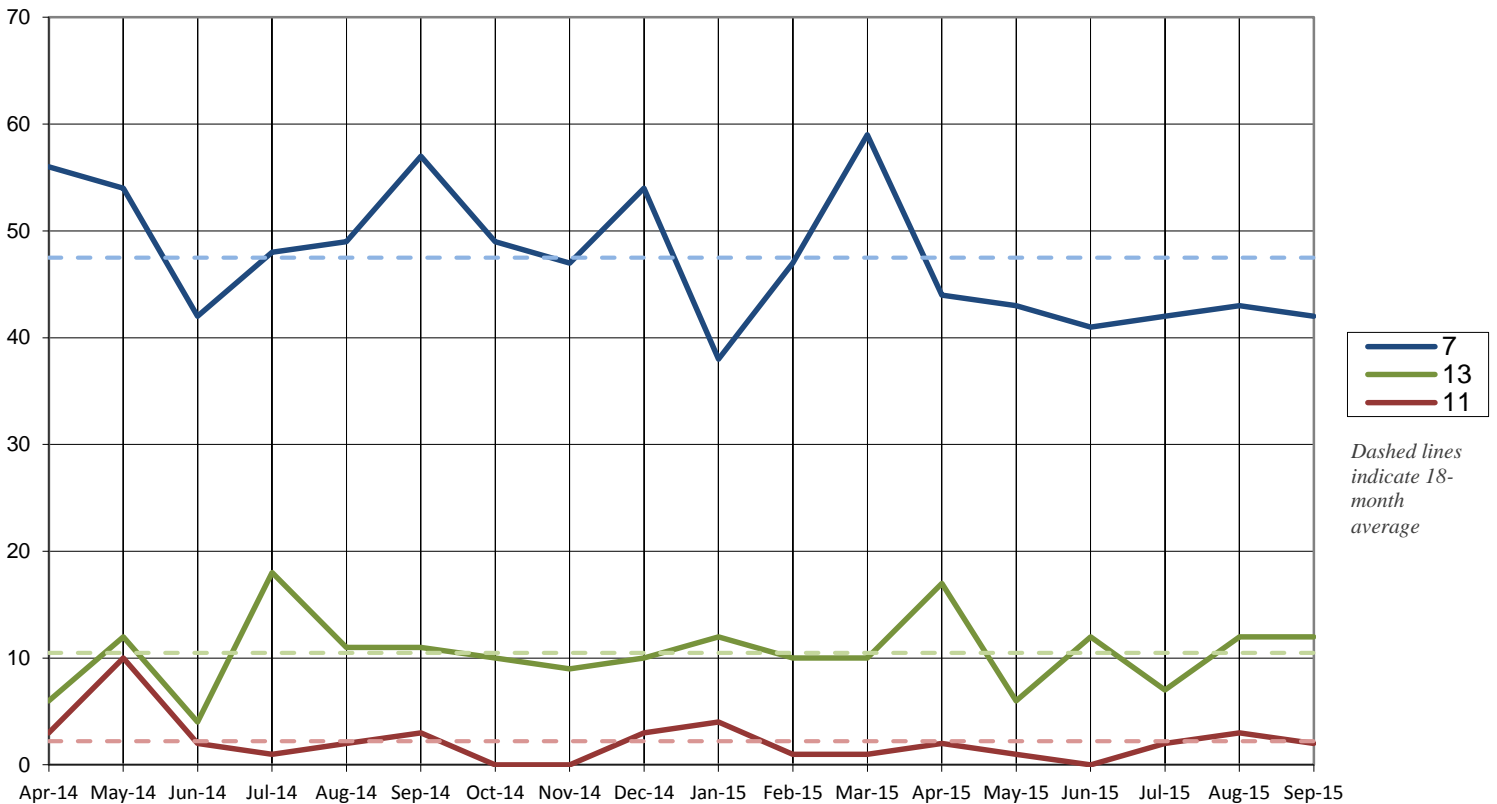
Cases Filed per Month by Year



Total Cases Filed per Year

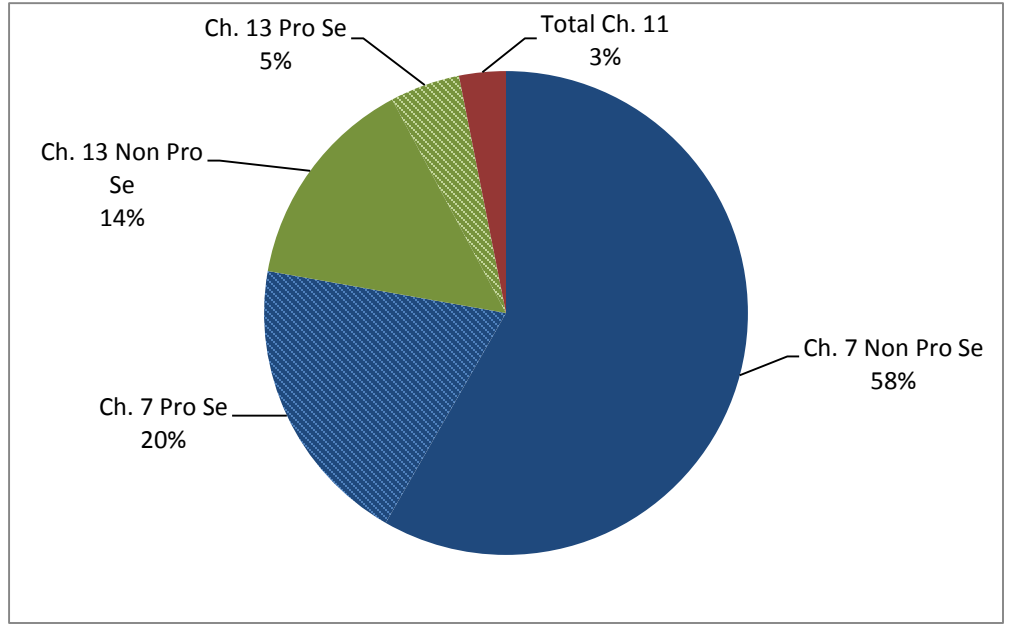


Cases Filed Per Month by Chapter - 18 months



Pro Se Filings through September 2015

	Total	Pro Se
Ch. 7	399	100
Ch. 13	98	24
Ch. 11	16	4



United States Bankruptcy Court for the District of Columbia

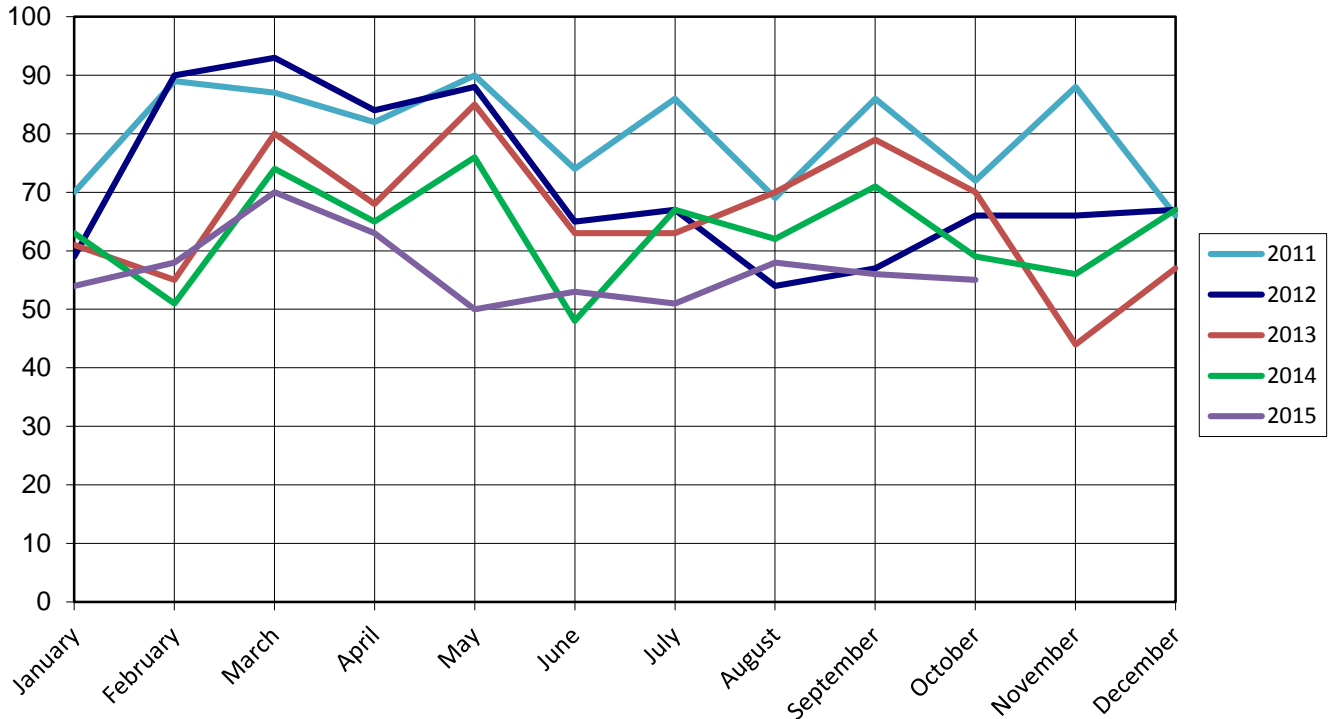
Report on Bankruptcy Case Filings October 2015

	Month Total	2015 YTD Total	2014 YTD Total
Ch. 7	42	441	454 (-62)
Ch. 13	12	110	89 (+11)
Ch. 11	1	17	34 (-17)
	55	568	636 (-68)

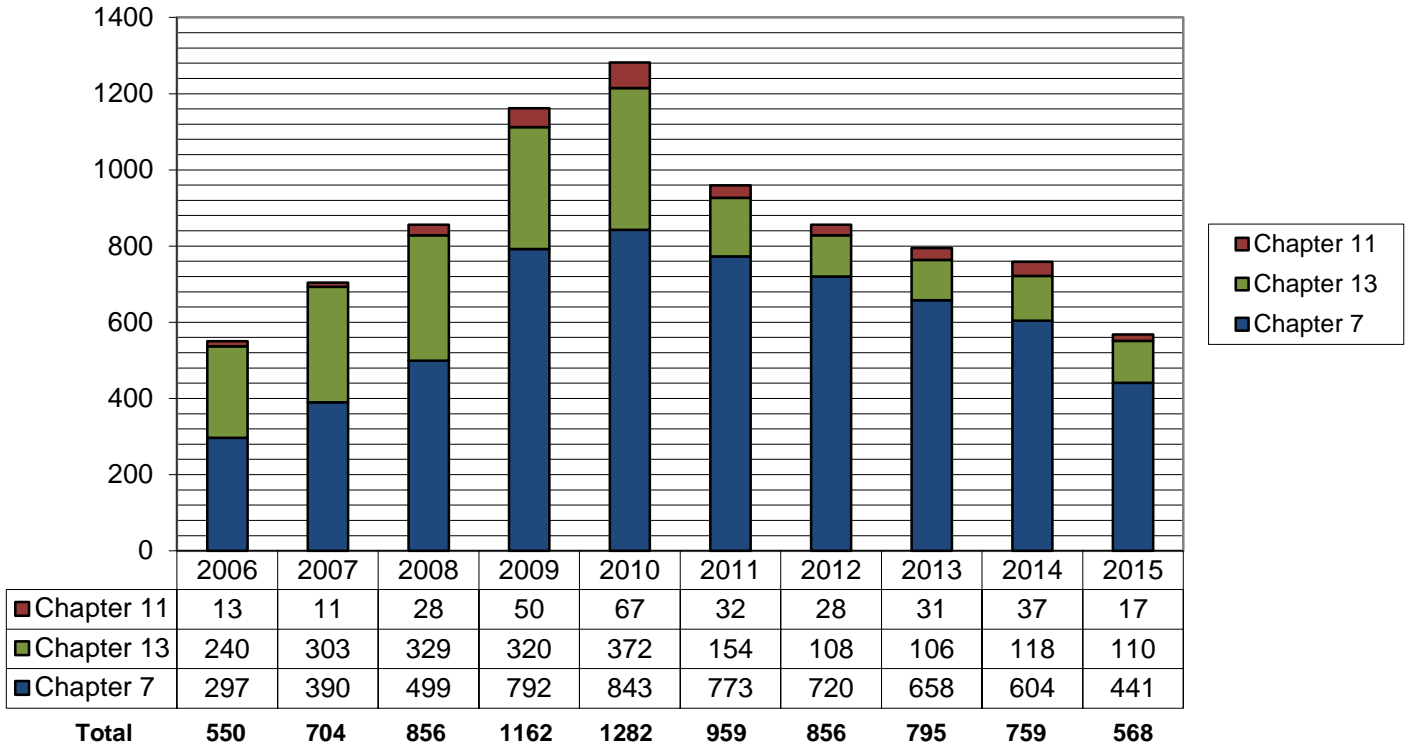
As of October 31, 2015,

- ◆ The projected total cases for 2015 is **682**
- ◆ Compared to 2013, filings decreased by **10.7%**
- ◆ An average of **1.9** cases were filed each day

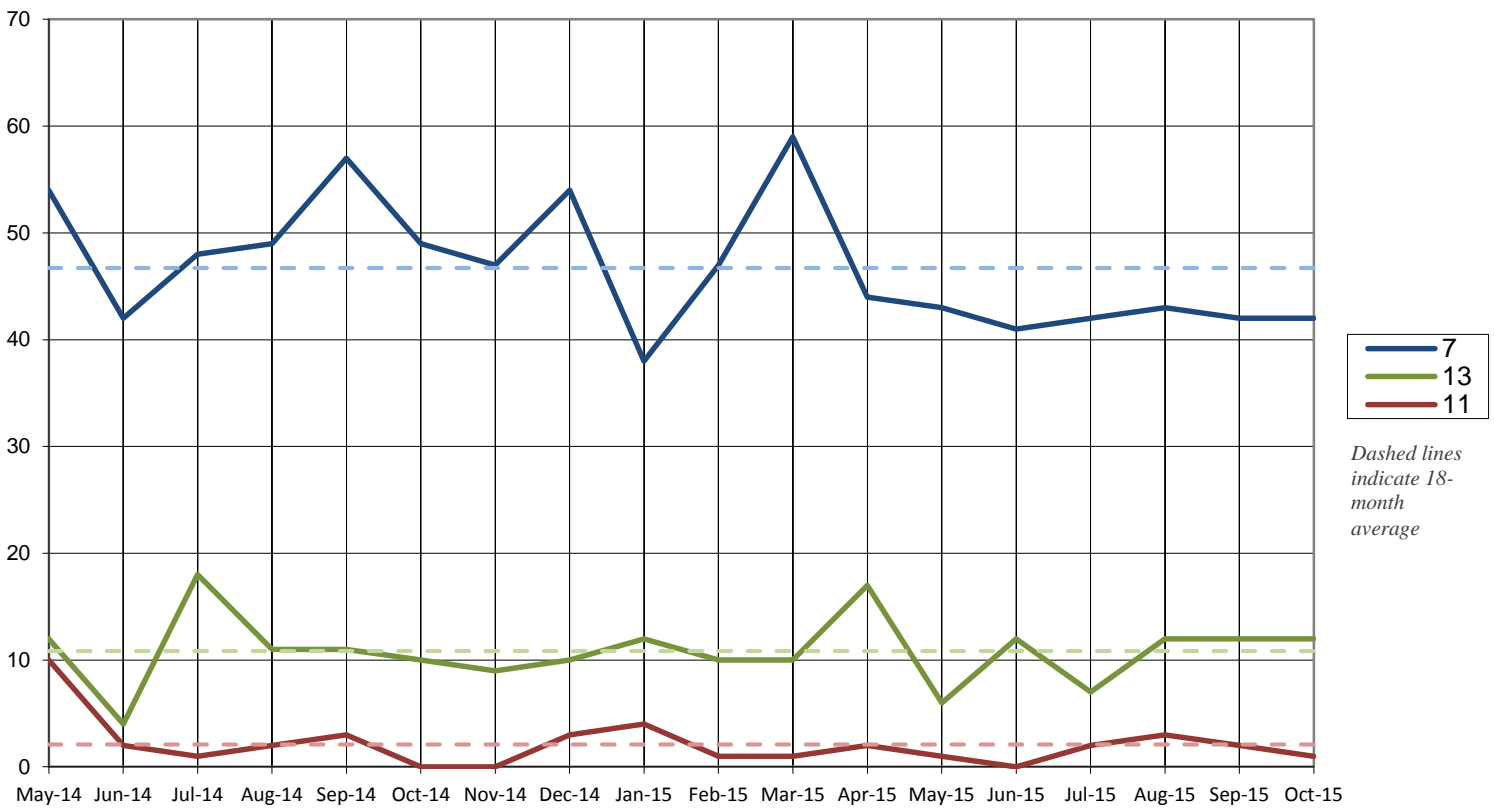
Cases Filed per Month by Year



Total Cases Filed per Year

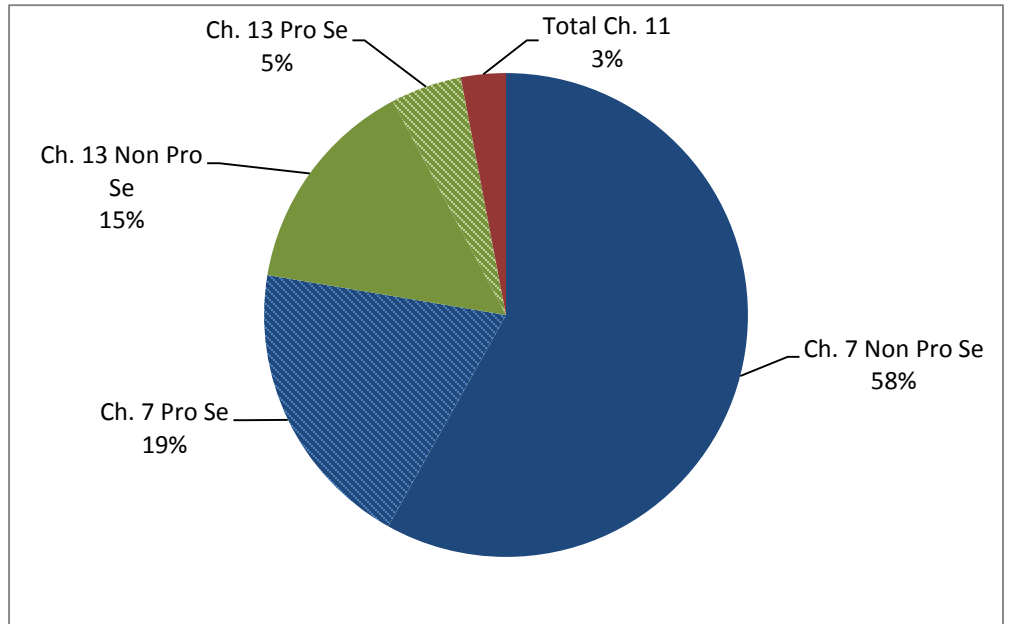


Cases Filed Per Month by Chapter - 18 months



Pro Se Filings through October 2015

	Total	Pro Se
Ch. 7	441	111
Ch. 13	110	27
Ch. 11	17	4



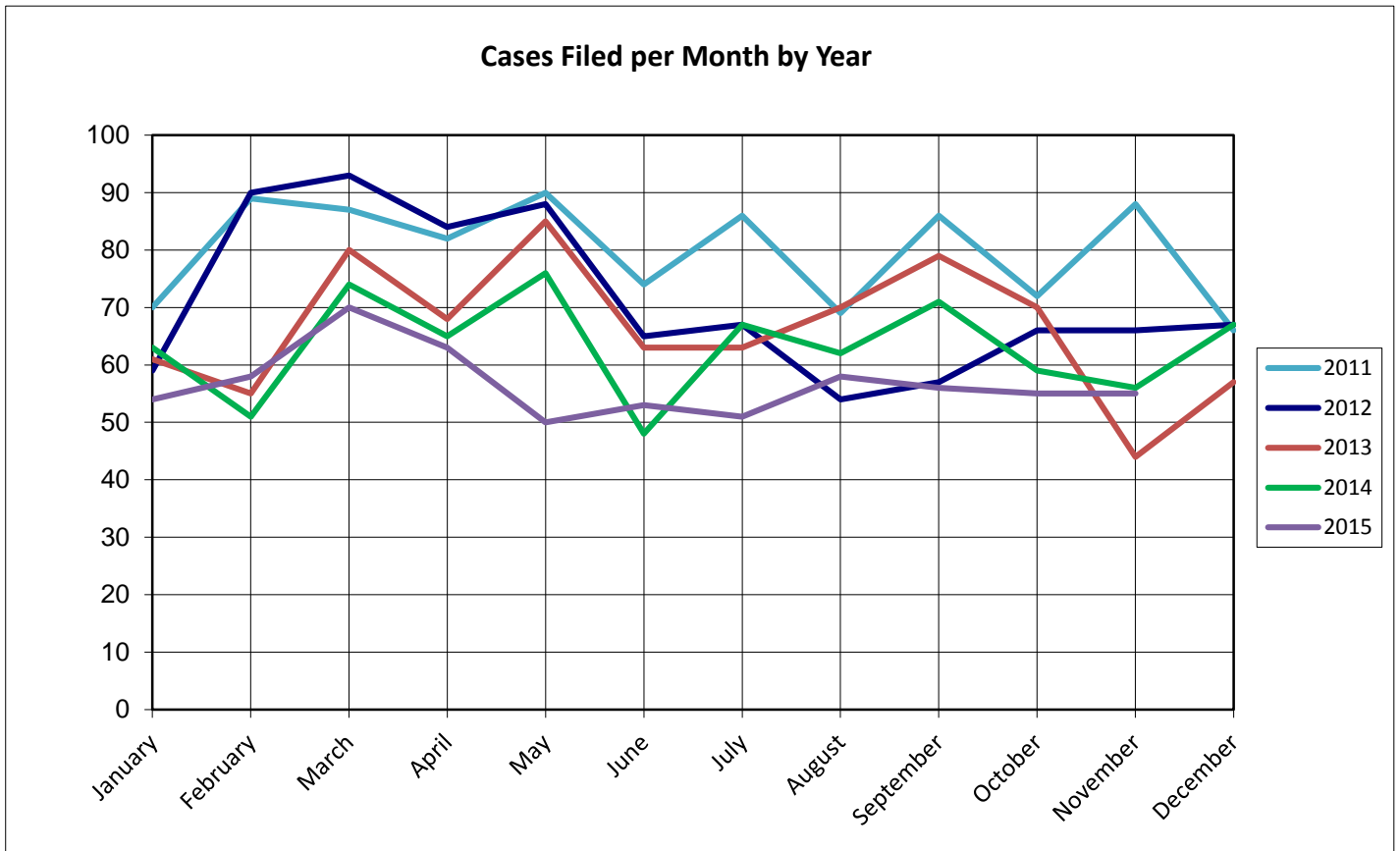
United States Bankruptcy Court for the District of Columbia

Report on Bankruptcy Case Filings November 2015

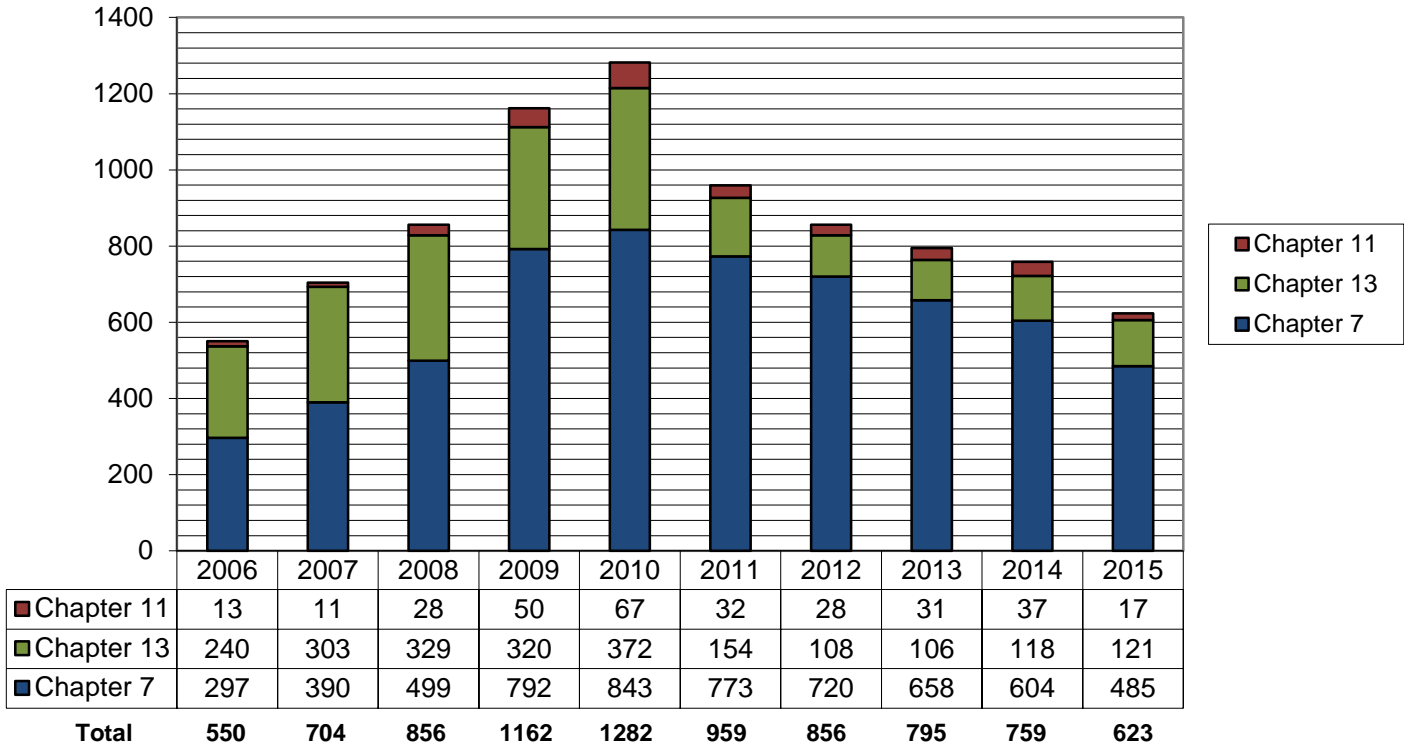
	Month Total	2015 YTD Total	2014 YTD Total
Ch. 7	44	485	550 (-65)
Ch. 13	11	121	108 (+13)
Ch. 11	0	17	34 (-17)
	55	623	692 (-68)

As of November 30, 2015,

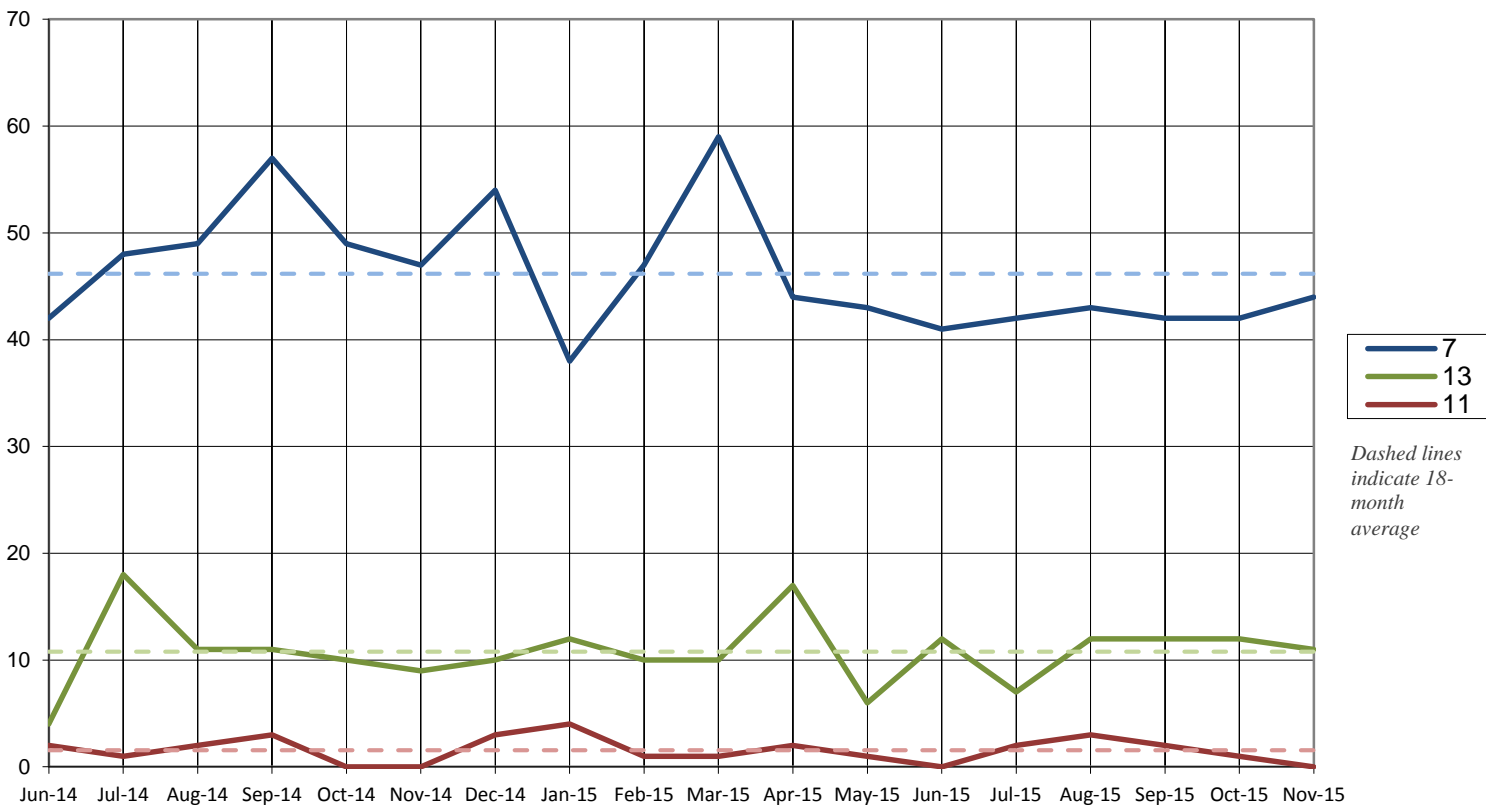
- ◆ The projected total cases for 2015 is **681**
- ◆ Compared to 2013, filings decreased by **10%**
- ◆ An average of **1.9** cases were filed each day



Total Cases Filed per Year

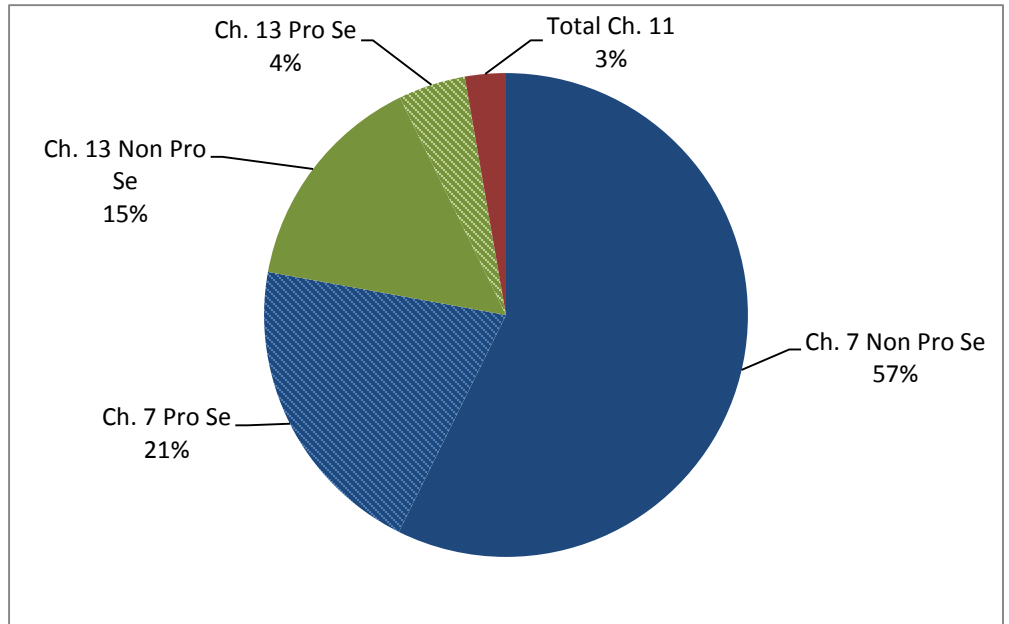


Cases Filed Per Month by Chapter - 18 months



Pro Se Filings through November 2015

	Total	Pro Se
Ch. 7	485	128
Ch. 13	121	28
Ch. 11	17	4



United States Bankruptcy Court for the District of Columbia

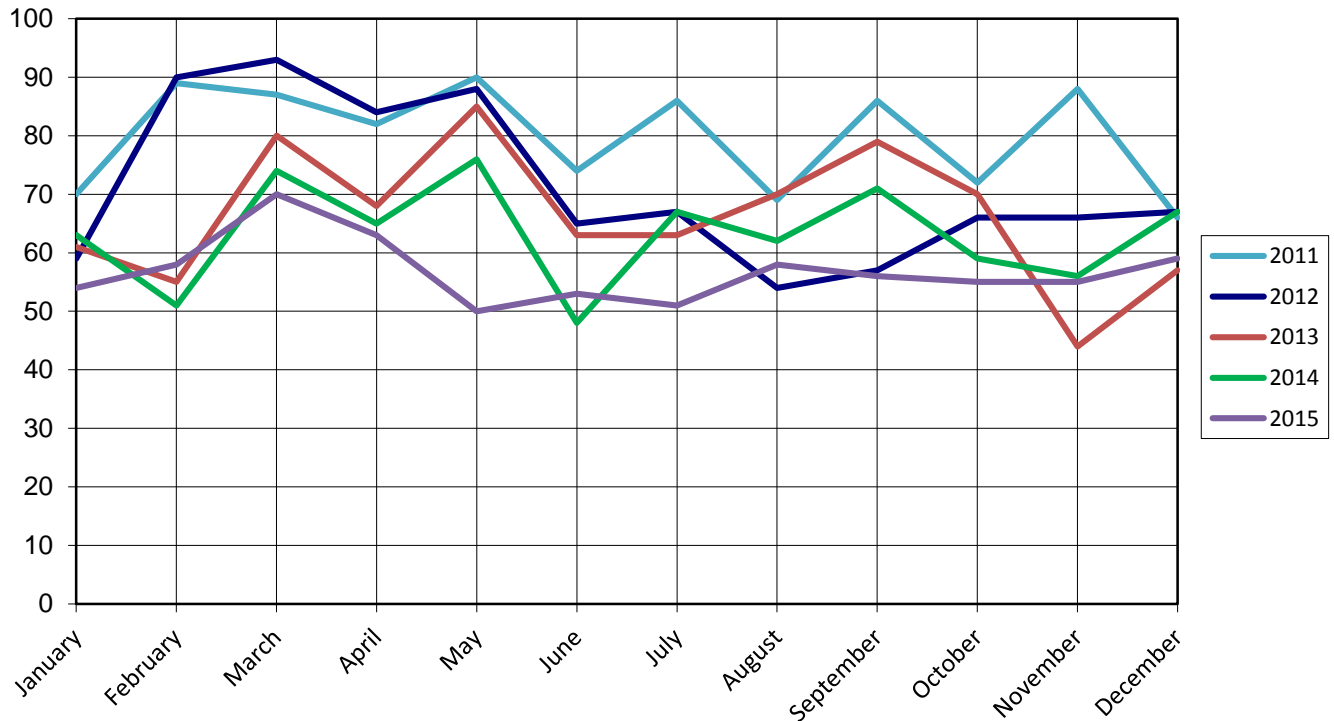
Report on Bankruptcy Case Filings December 2015

	Month Total	2015 YTD Total	2014 YTD Total
Ch. 7	42	527	604 (-77)
Ch. 13	13	134	118 (+16)
Ch. 11	4	21	37 (-16)
	59	682	759 (-77)

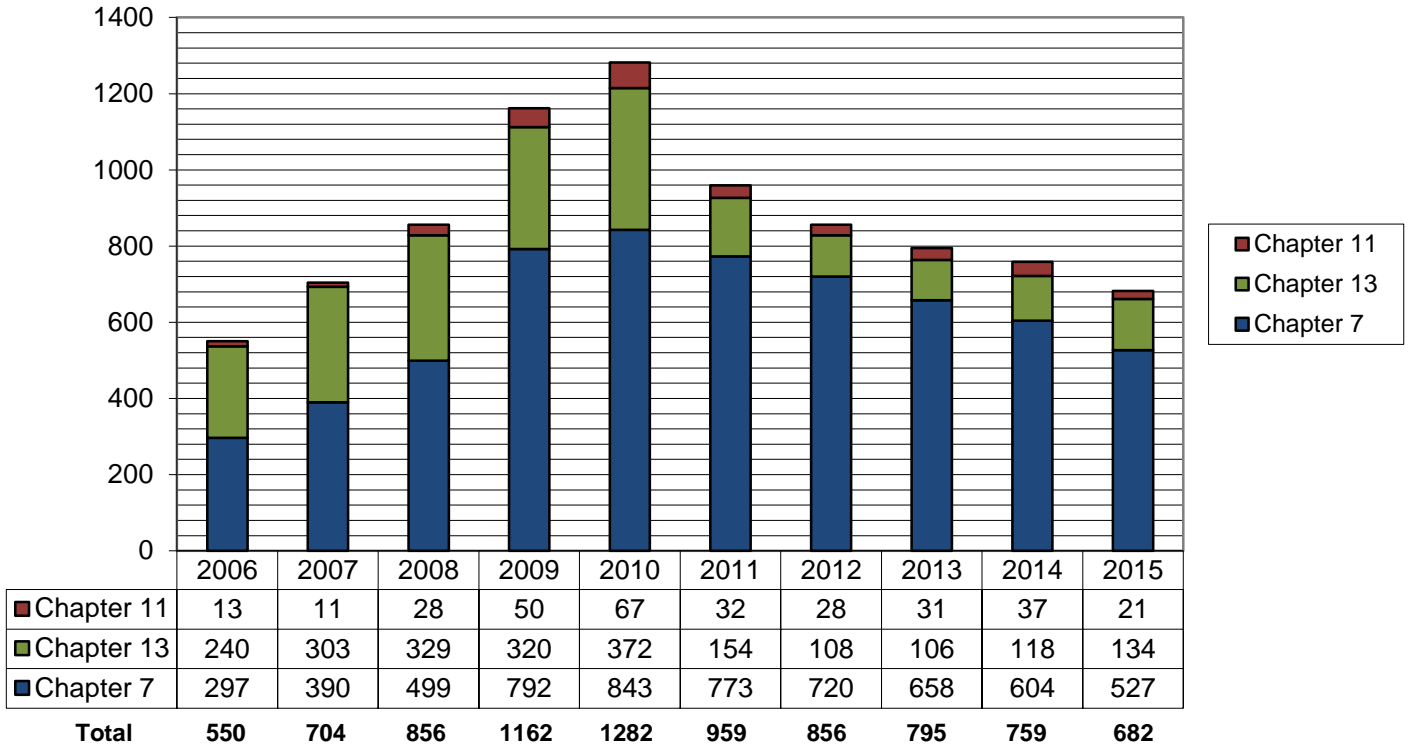
As of December 31, 2015,

- ◆ The total cases for 2015 is **682**
- ◆ Compared to 2014, filings decreased by **10.1%**
- ◆ An average of **1.9** cases were filed each day

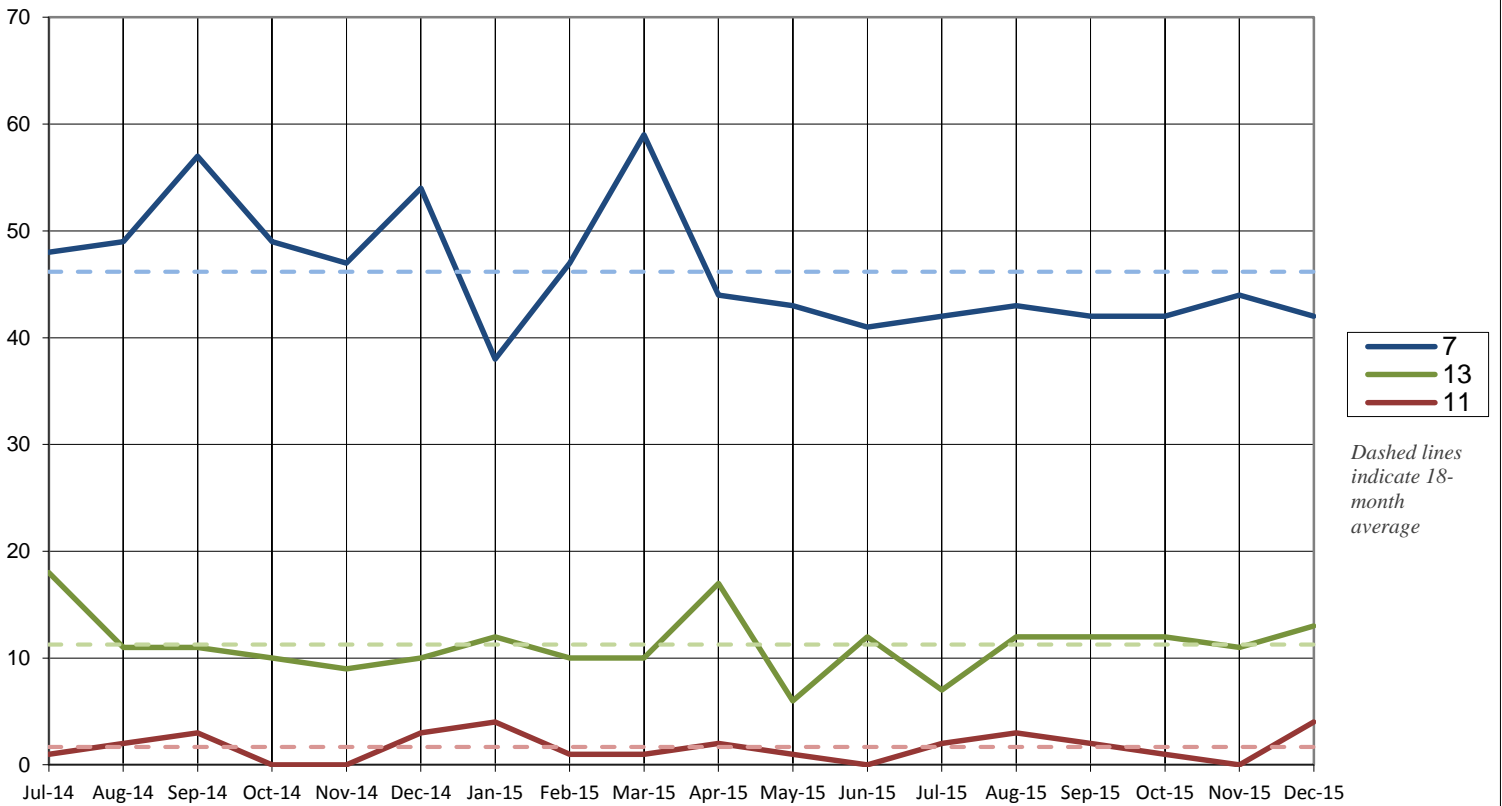
Cases Filed per Month by Year



Total Cases Filed per Year



Cases Filed Per Month by Chapter - 18 months



Pro Se Filings through December 2015

	Total	Pro Se
Ch. 7	527	139
Ch. 13	134	32
Ch. 11	21	4

