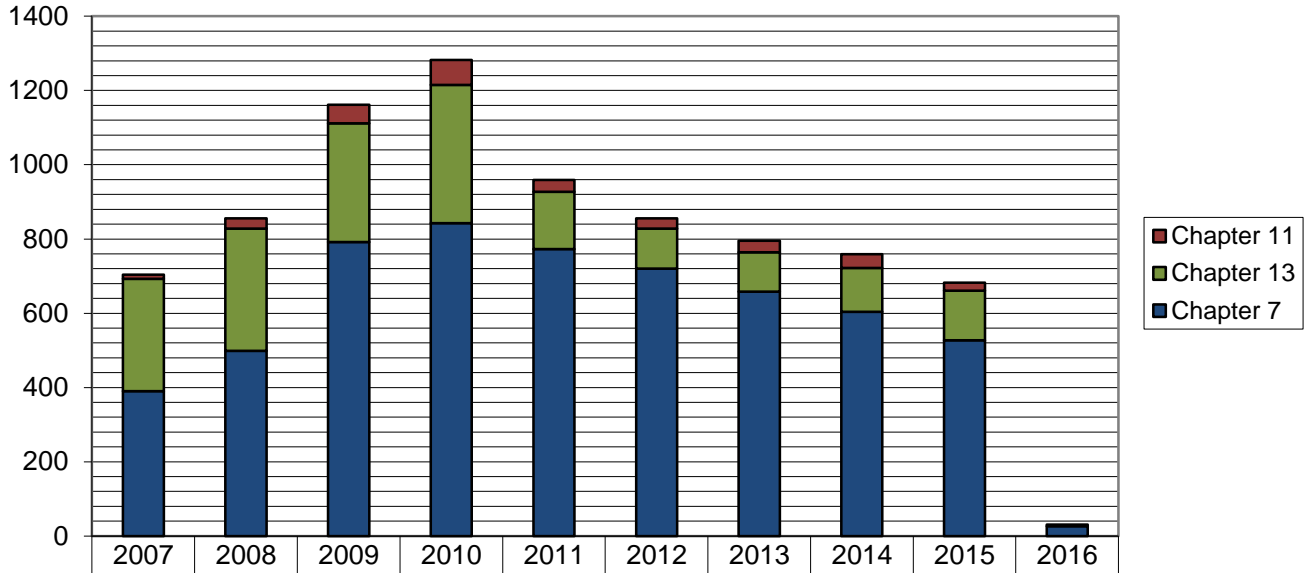


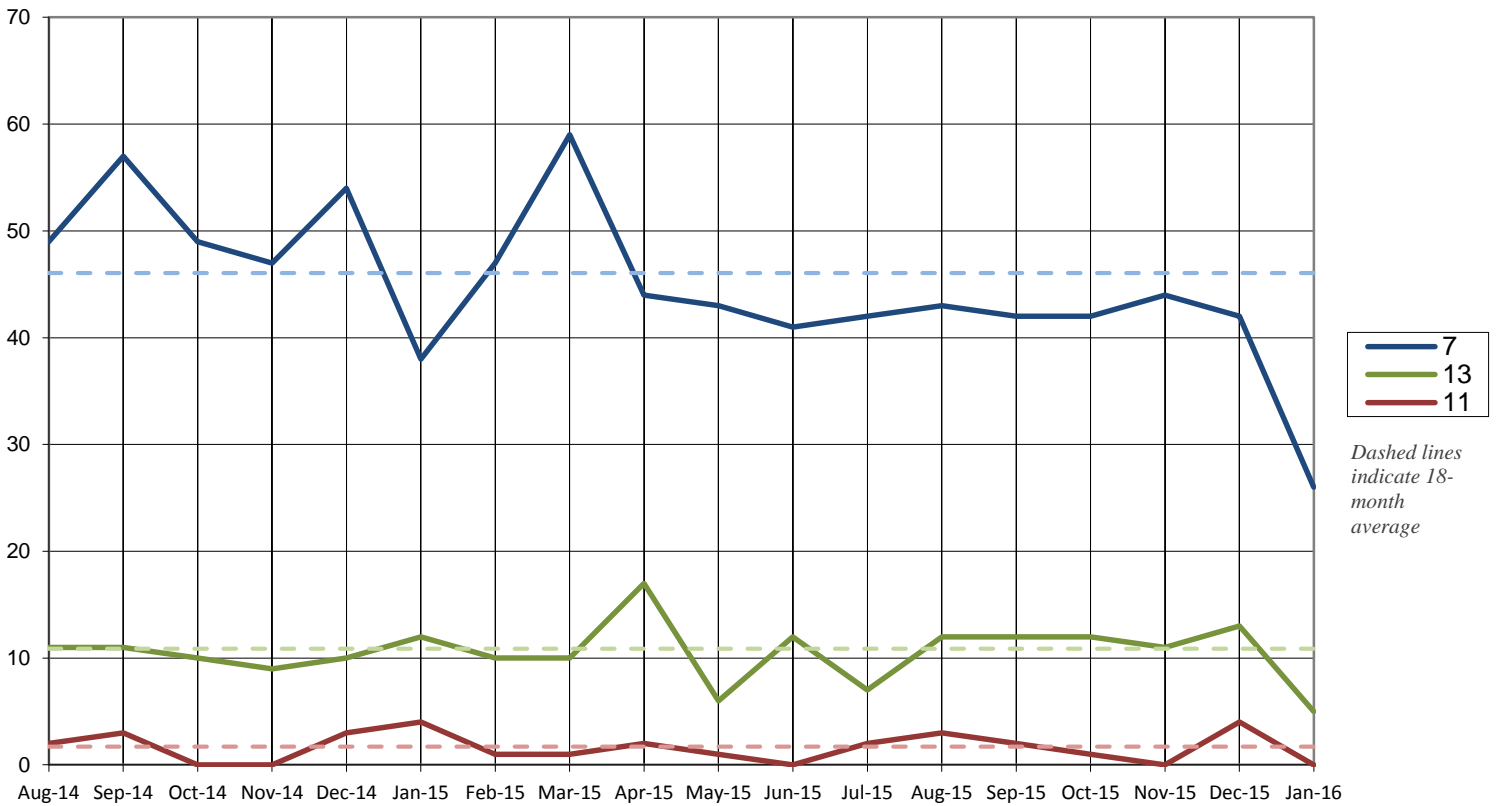


### Total Cases Filed per Year



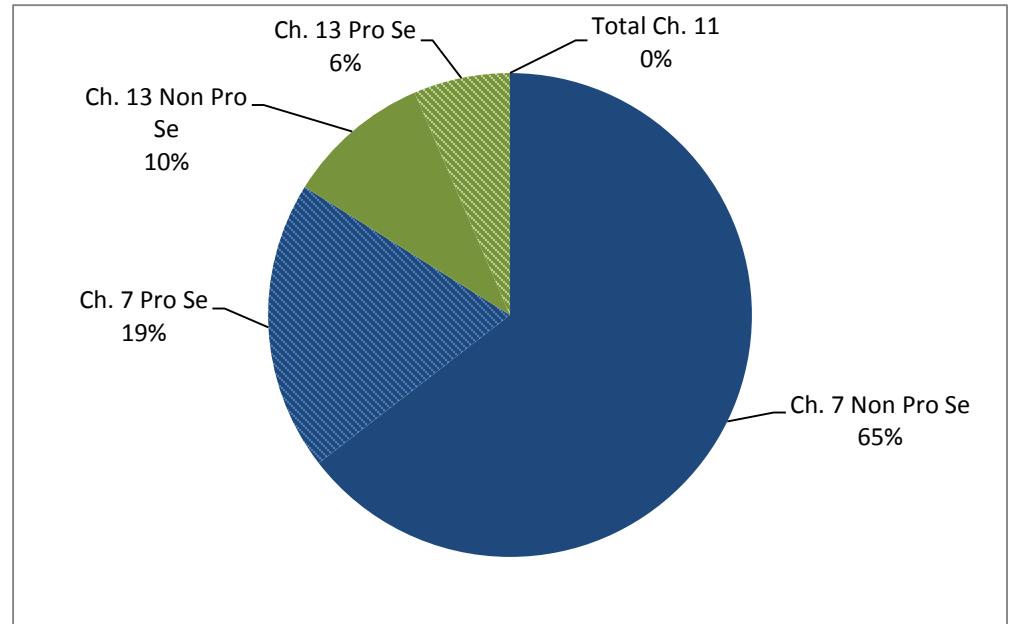
	2007	2008	2009	2010	2011	2012	2013	2014	2015	2016
Chapter 11	11	28	50	67	32	28	31	37	21	0
Chapter 13	303	329	320	372	154	108	106	118	134	5
Chapter 7	390	499	792	843	773	720	658	604	527	26
<b>Total</b>	<b>704</b>	<b>856</b>	<b>1162</b>	<b>1282</b>	<b>959</b>	<b>856</b>	<b>795</b>	<b>759</b>	<b>682</b>	<b>31</b>

### Cases Filed Per Month by Chapter - 18 months



### Pro Se Filings through January 2016

	Total	Pro Se
Ch. 7	26	6
Ch. 13	5	2
Ch. 11	0	0



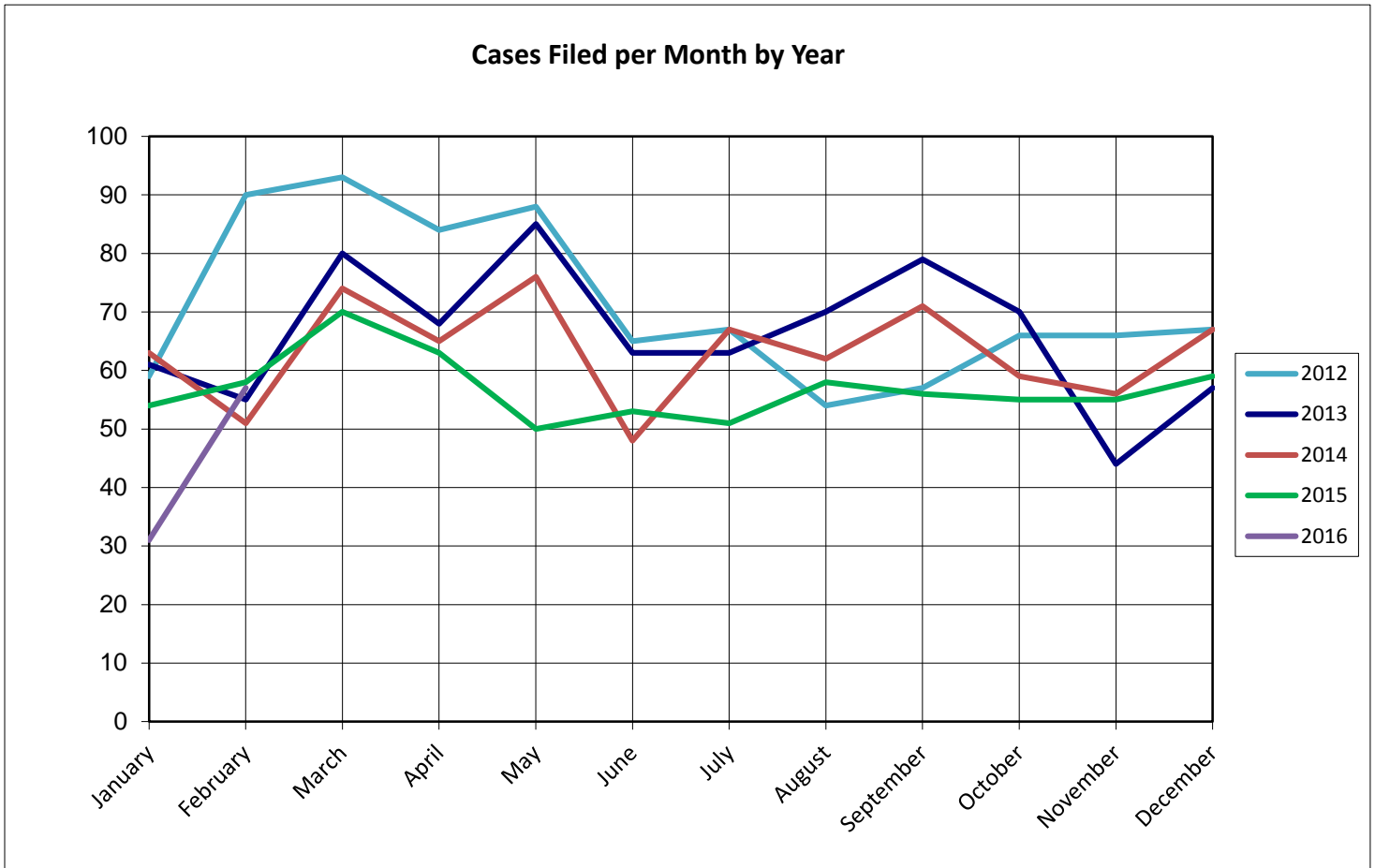
# United States Bankruptcy Court for the District of Columbia

## Report on Bankruptcy Case Filings February 2016

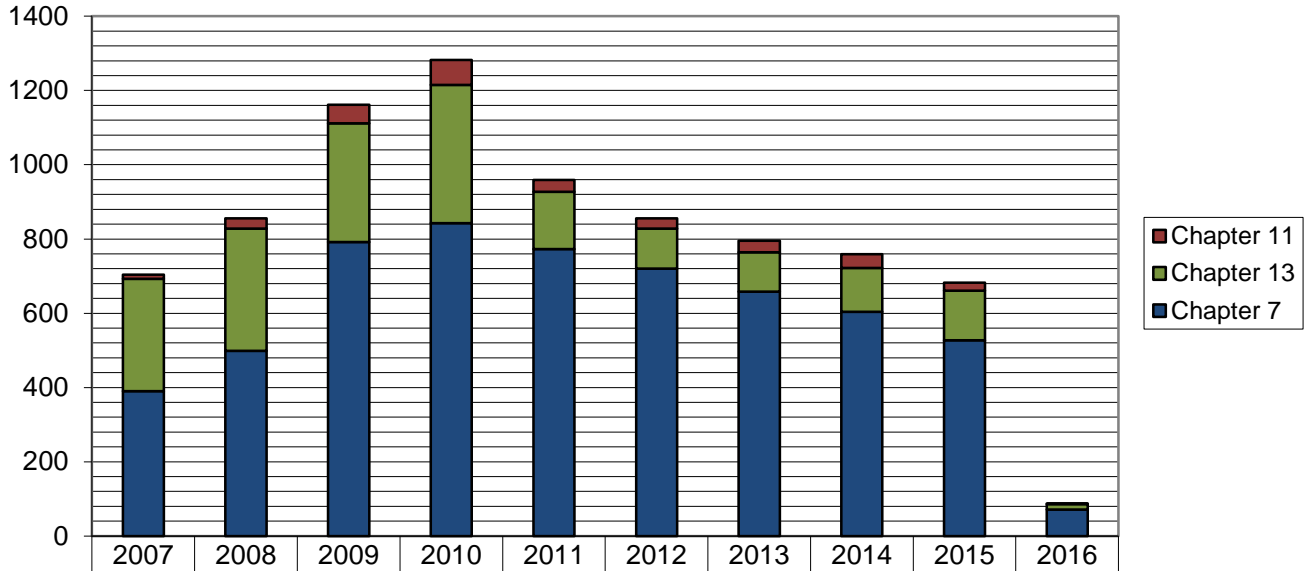
	Month Total	2015 YTD Total	2014 YTD Total
Ch. 7	45	71	85 (-14)
Ch. 13	10	15	22 (-7)
Ch. 11	2	2	5 (-3)
	57	88	112 (-24)

As of February 29, 2016:

- ◆ The projected total cases for 2016 is **544**
- ◆ Compared to 2015, filings decreased by **21.4%**
- ◆ An average of **1.5** case was filed each day

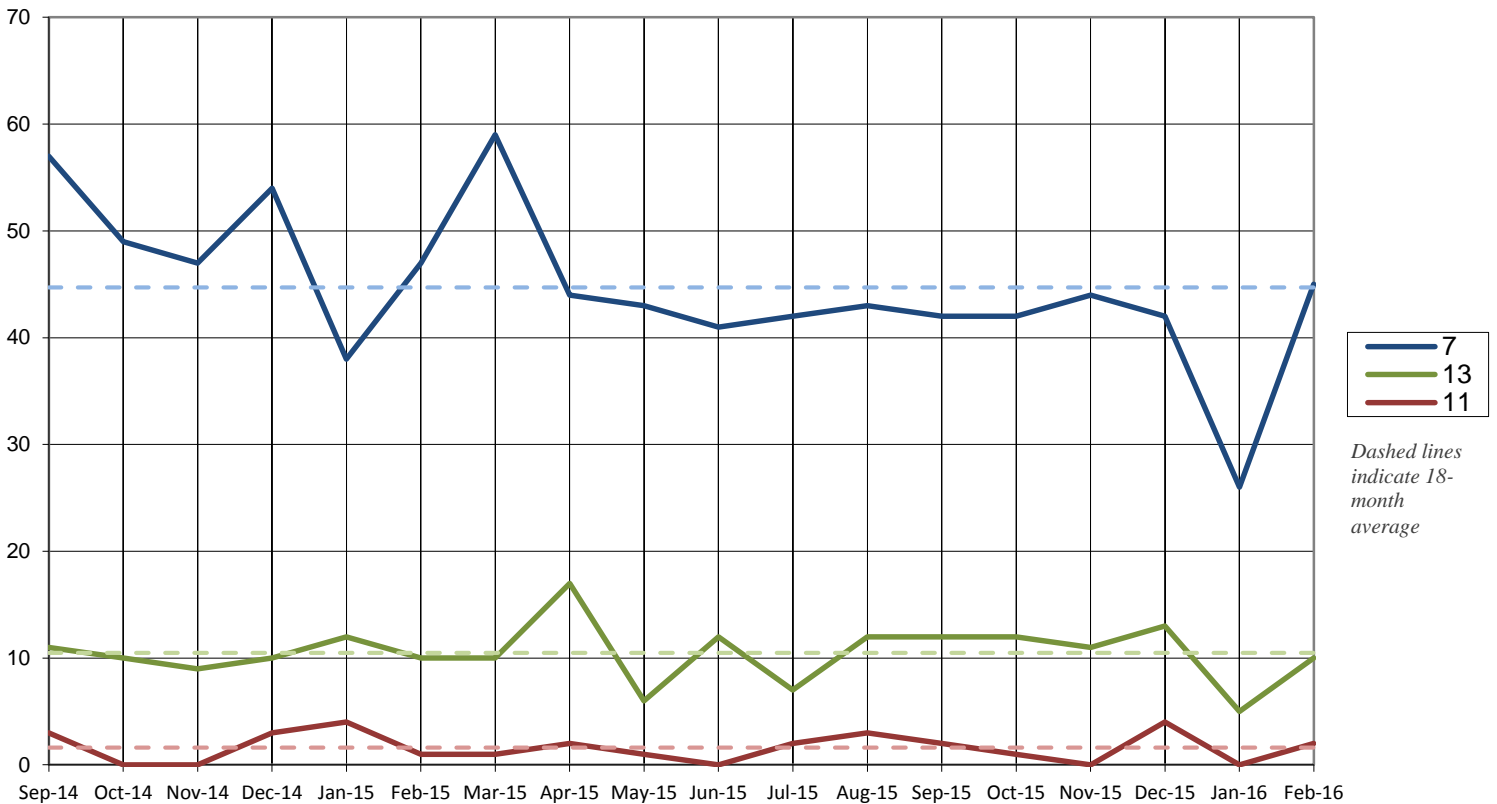


### Total Cases Filed per Year



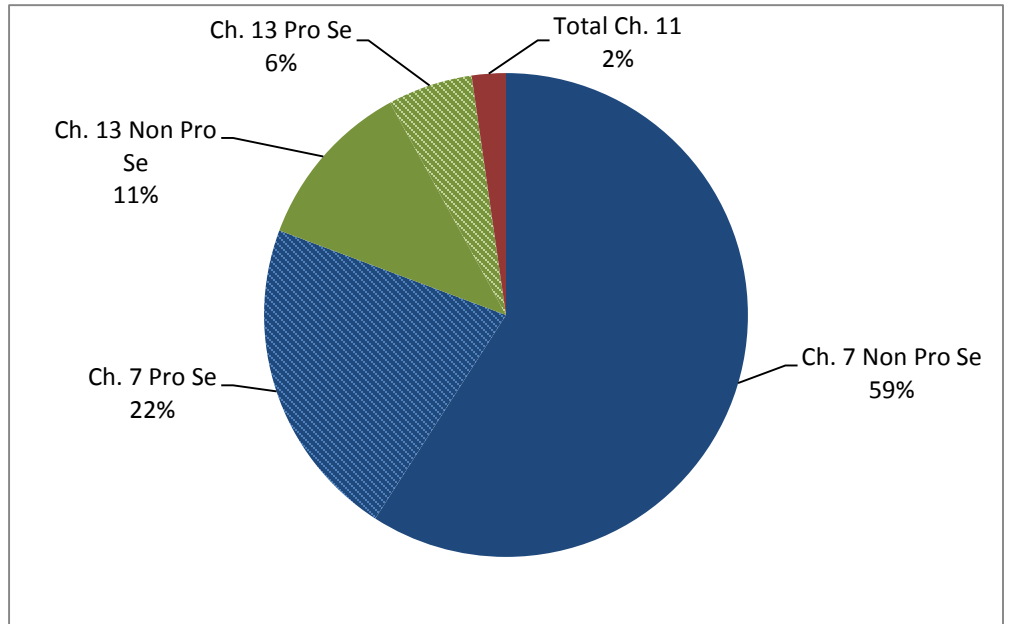
	2007	2008	2009	2010	2011	2012	2013	2014	2015	2016
Chapter 11	11	28	50	67	32	28	31	37	21	2
Chapter 13	303	329	320	372	154	108	106	118	134	15
Chapter 7	390	499	792	843	773	720	658	604	527	71
<b>Total</b>	<b>704</b>	<b>856</b>	<b>1162</b>	<b>1282</b>	<b>959</b>	<b>856</b>	<b>795</b>	<b>759</b>	<b>682</b>	<b>88</b>

### Cases Filed Per Month by Chapter - 18 months



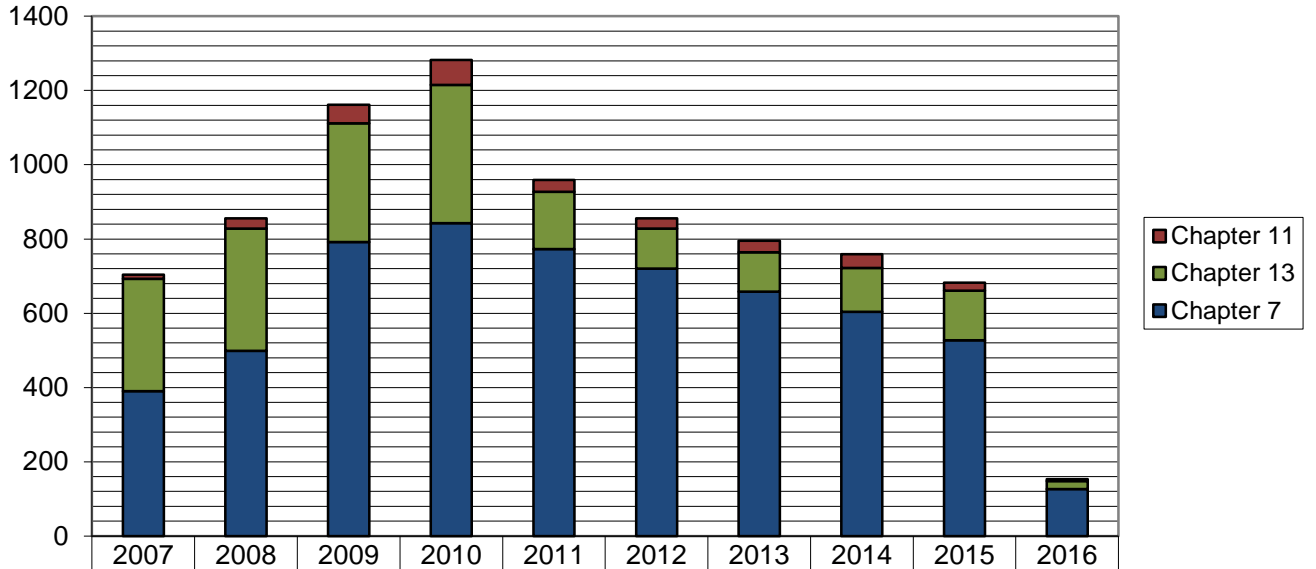
### Pro Se Filings through February 2016

	Total	Pro Se
Ch. 7	71	19
Ch. 13	15	5
Ch. 11	2	0



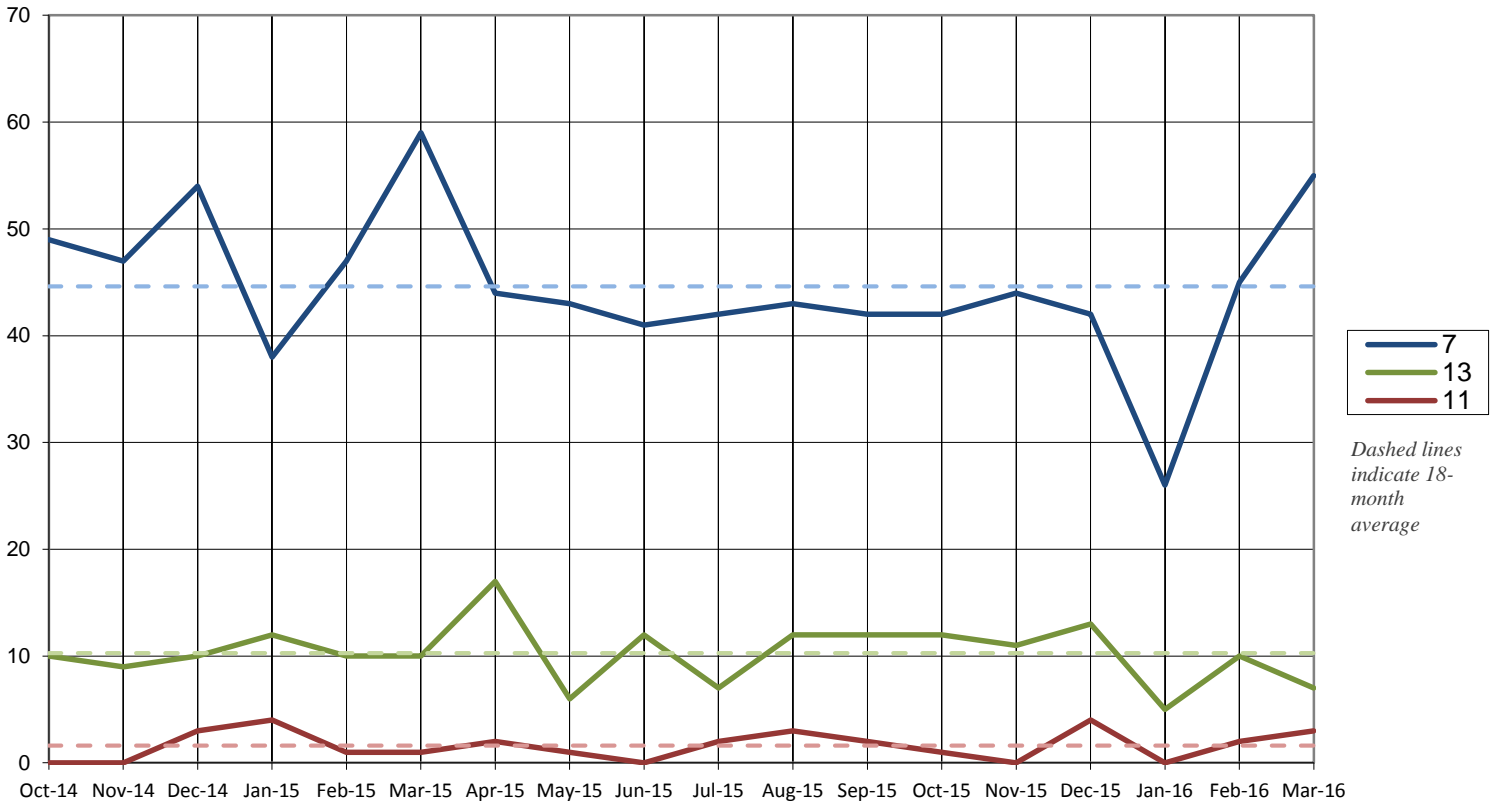


### Total Cases Filed per Year



	2007	2008	2009	2010	2011	2012	2013	2014	2015	2016
Chapter 11	11	28	50	67	32	28	31	37	21	5
Chapter 13	303	329	320	372	154	108	106	118	134	22
Chapter 7	390	499	792	843	773	720	658	604	527	126
<b>Total</b>	<b>704</b>	<b>856</b>	<b>1162</b>	<b>1282</b>	<b>959</b>	<b>856</b>	<b>795</b>	<b>759</b>	<b>682</b>	<b>153</b>

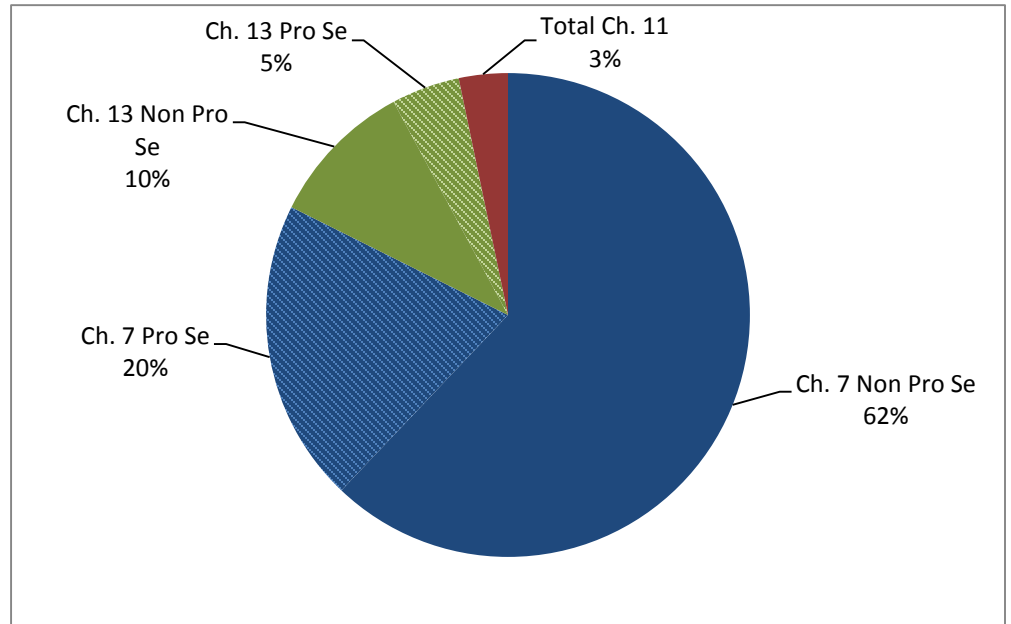
### Cases Filed Per Month by Chapter - 18 months





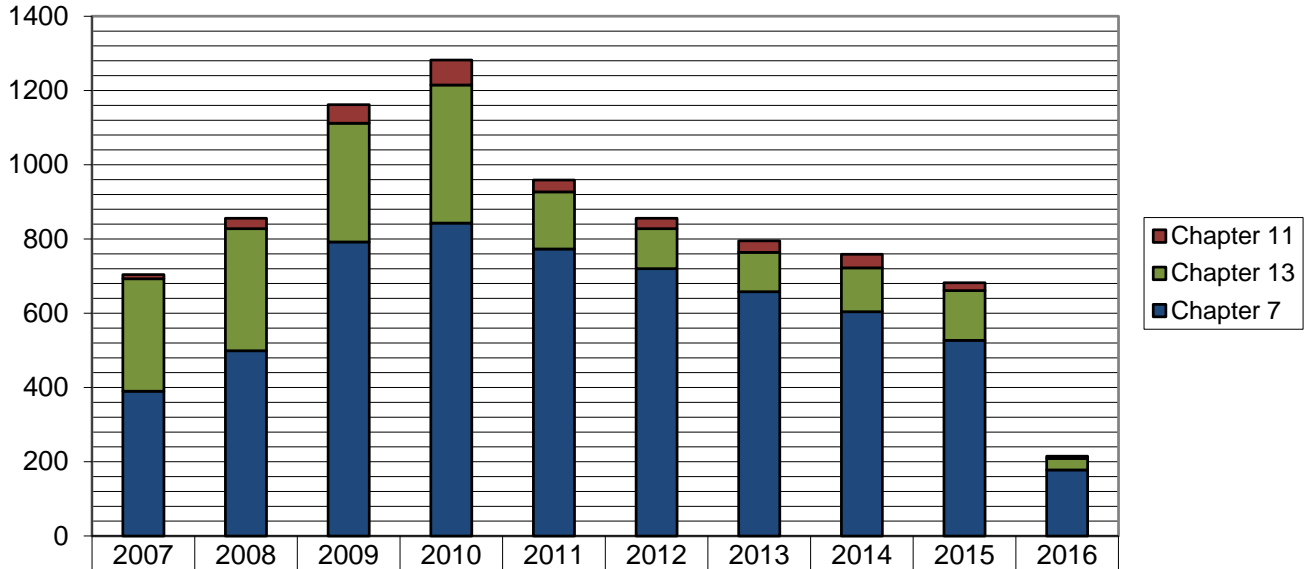
### Pro Se Filings through March 2016

	Total	Pro Se
Ch. 7	126	31
Ch. 13	22	7
Ch. 11	5	0



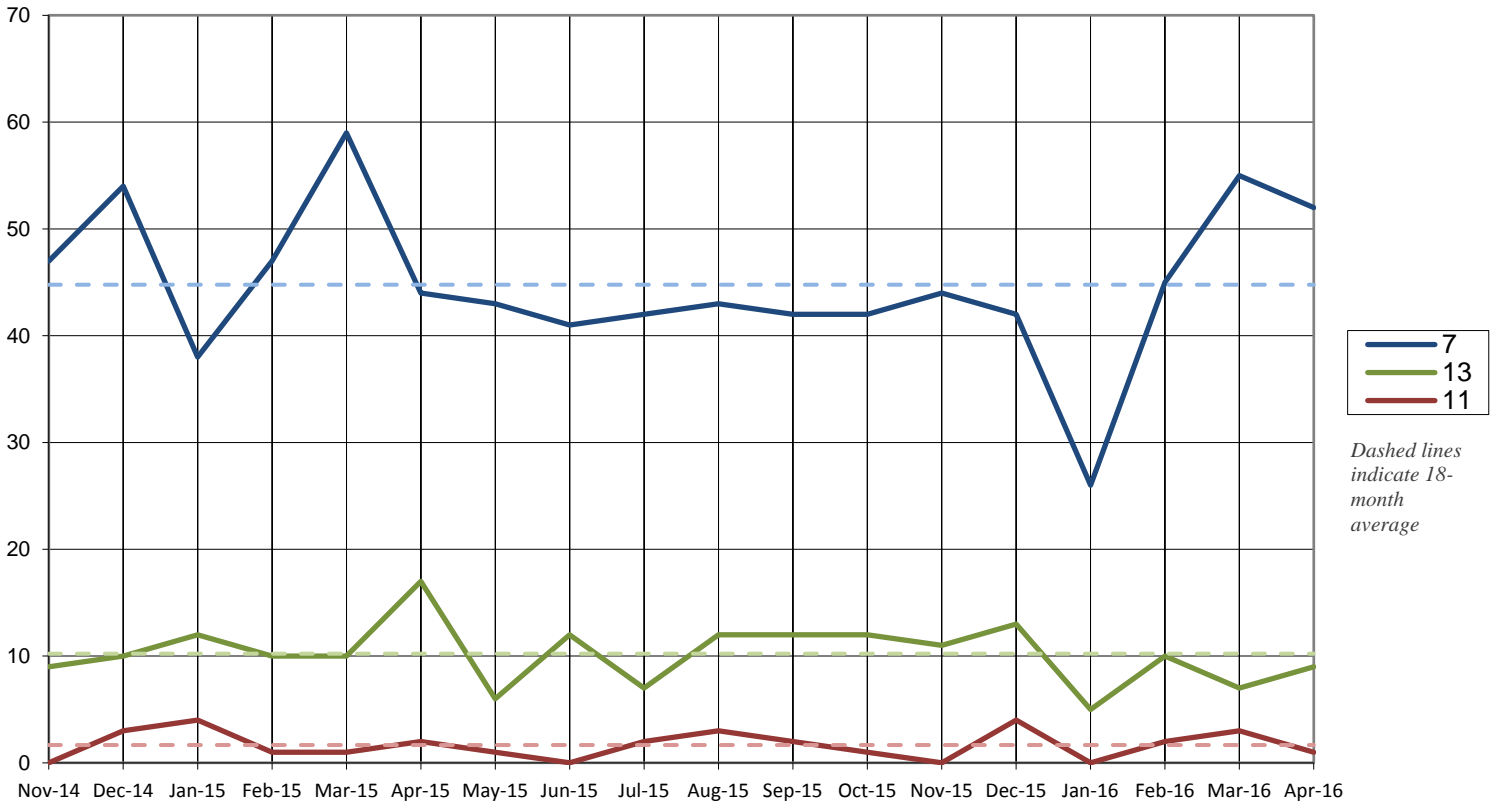


### Total Cases Filed per Year



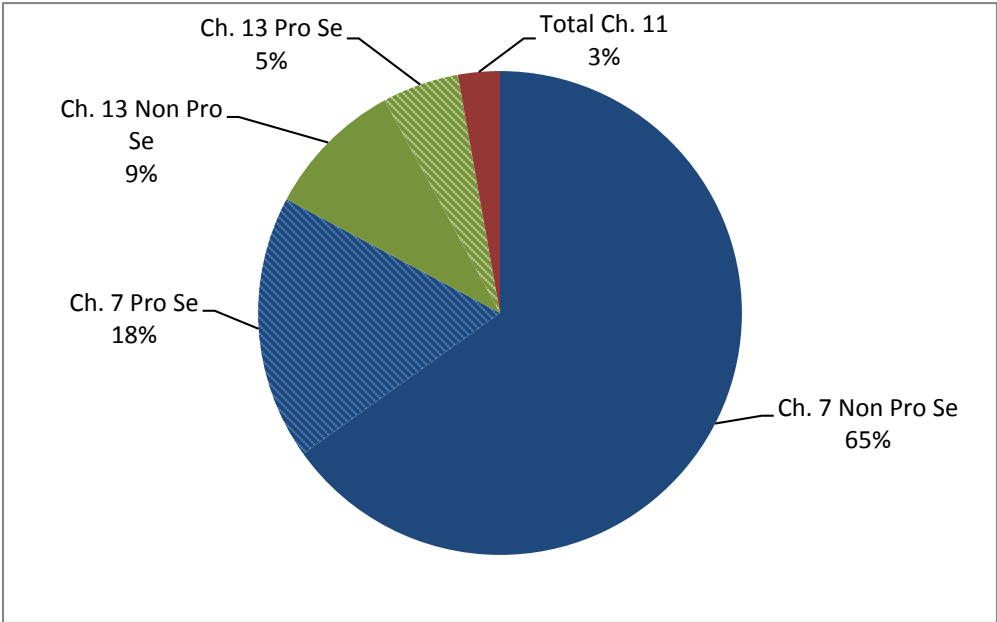
	2007	2008	2009	2010	2011	2012	2013	2014	2015	2016
Chapter 11	11	28	50	67	32	28	31	37	21	6
Chapter 13	303	329	320	372	154	108	106	118	134	31
Chapter 7	390	499	792	843	773	720	658	604	527	178
<b>Total</b>	<b>704</b>	<b>856</b>	<b>1162</b>	<b>1282</b>	<b>959</b>	<b>856</b>	<b>795</b>	<b>759</b>	<b>682</b>	<b>215</b>

### Cases Filed Per Month by Chapter - 18 months



**Pro Se Filings through April 2016**

	<b>Total</b>	<b>Pro Se</b>
<b>Ch. 7</b>	<b>178</b>	<b>38</b>
<b>Ch. 13</b>	<b>31</b>	<b>11</b>
<b>Ch. 11</b>	<b>6</b>	<b>0</b>



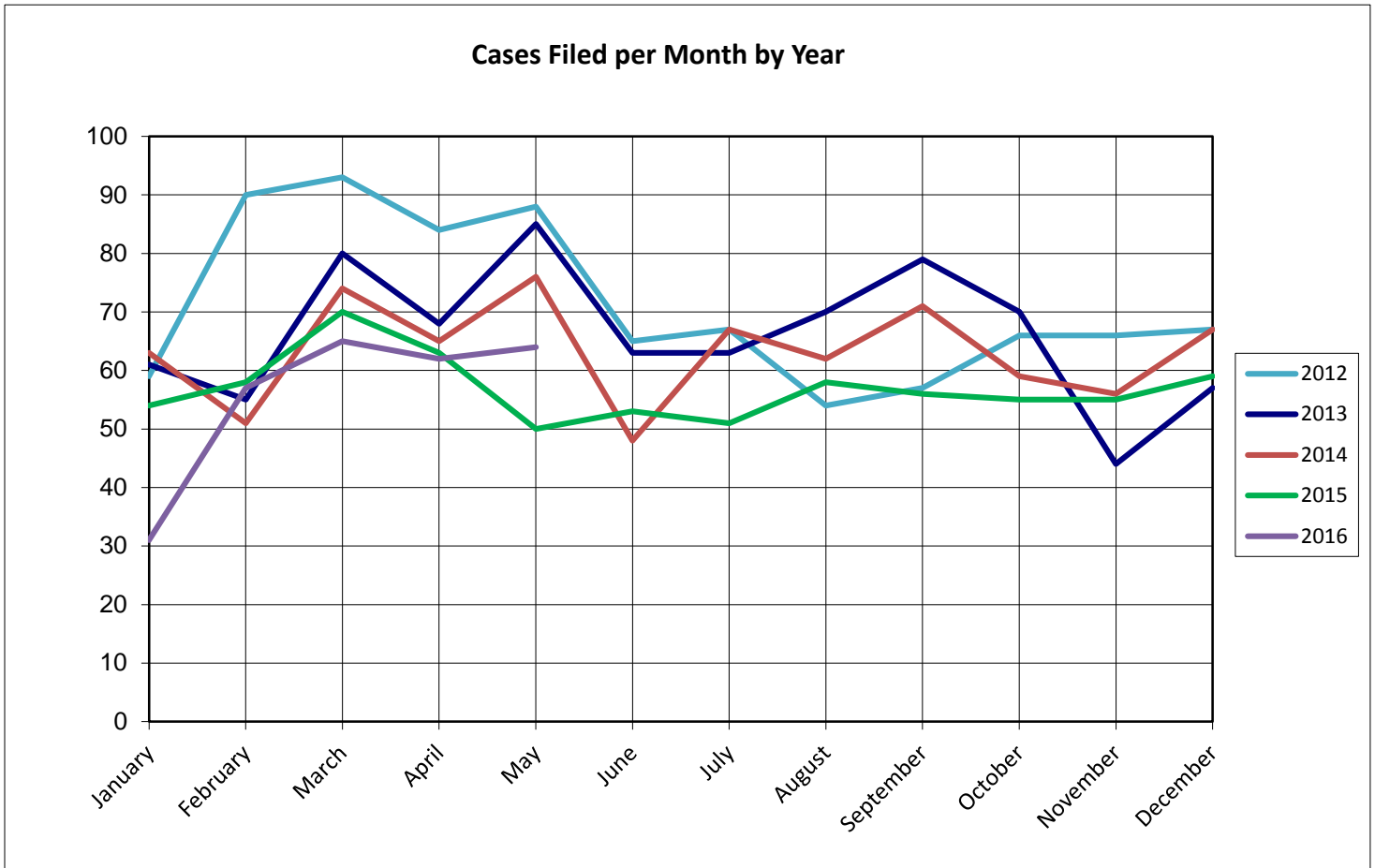
# United States Bankruptcy Court for the District of Columbia

## Report on Bankruptcy Case Filings May 2016

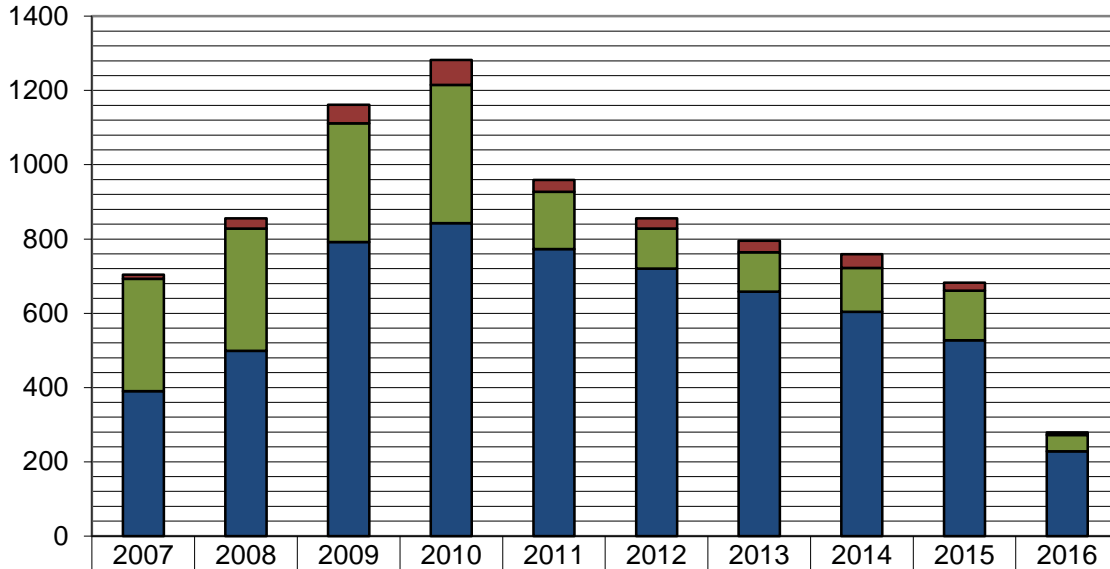
	Month Total	2016 YTD Total	2015 YTD Total
Ch. 7	50	228	231 (-3)
Ch. 13	13	44	55 (-11)
Ch. 11	1	7	9 (-2)
	64	279	295 (-16)

As of May 31, 2016:

- ◆ The projected total cases for 2016 is **674**
- ◆ Compared to 2015, filings decreased by **5.4%**
- ◆ An average of **1.8** cases were filed each day



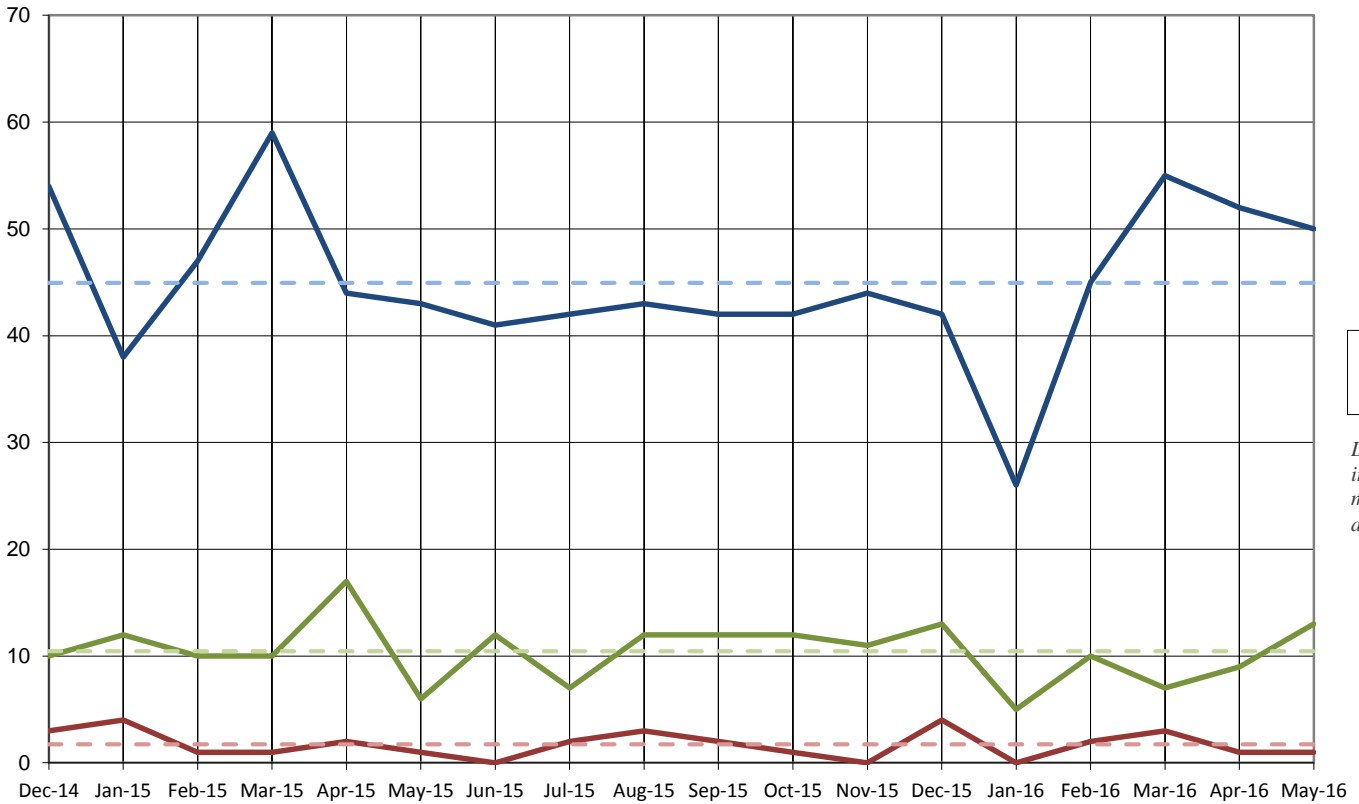
### Total Cases Filed per Year



■ Chapter 11  
■ Chapter 13  
■ Chapter 7

	2007	2008	2009	2010	2011	2012	2013	2014	2015	2016
■ Chapter 11	11	28	50	67	32	28	31	37	21	7
■ Chapter 13	303	329	320	372	154	108	106	118	134	44
■ Chapter 7	390	499	792	843	773	720	658	604	527	228
<b>Total</b>	<b>704</b>	<b>856</b>	<b>1162</b>	<b>1282</b>	<b>959</b>	<b>856</b>	<b>795</b>	<b>759</b>	<b>682</b>	<b>279</b>

### Cases Filed Per Month by Chapter - 18 months

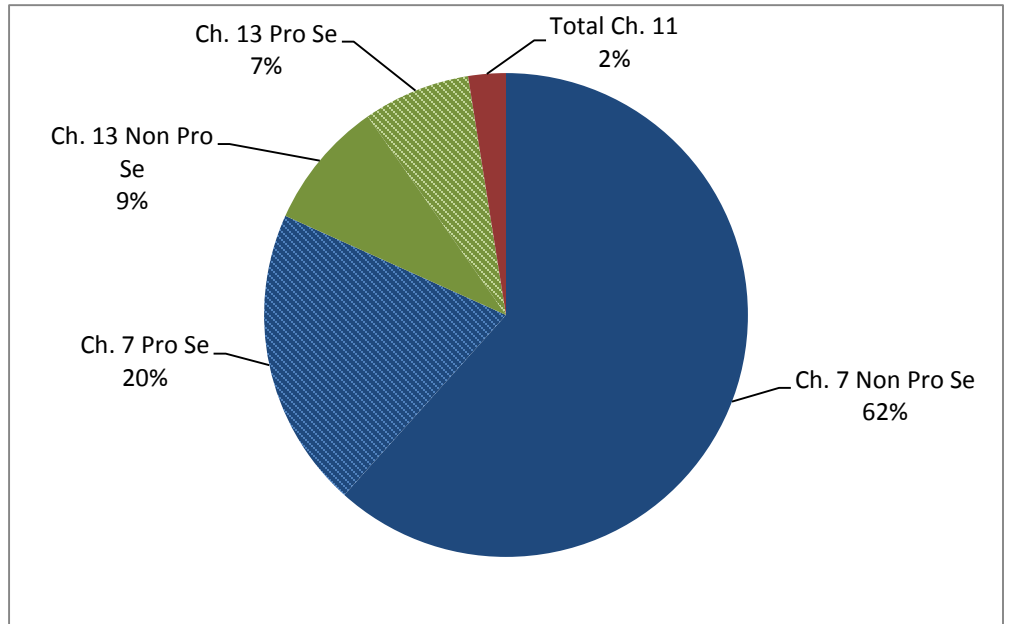


— 7  
— 13  
— 11

*Dashed lines indicate 18-month average*

### Pro Se Filings through May 2016

	Total	Pro Se
Ch. 7	228	56
Ch. 13	44	20
Ch. 11	7	0



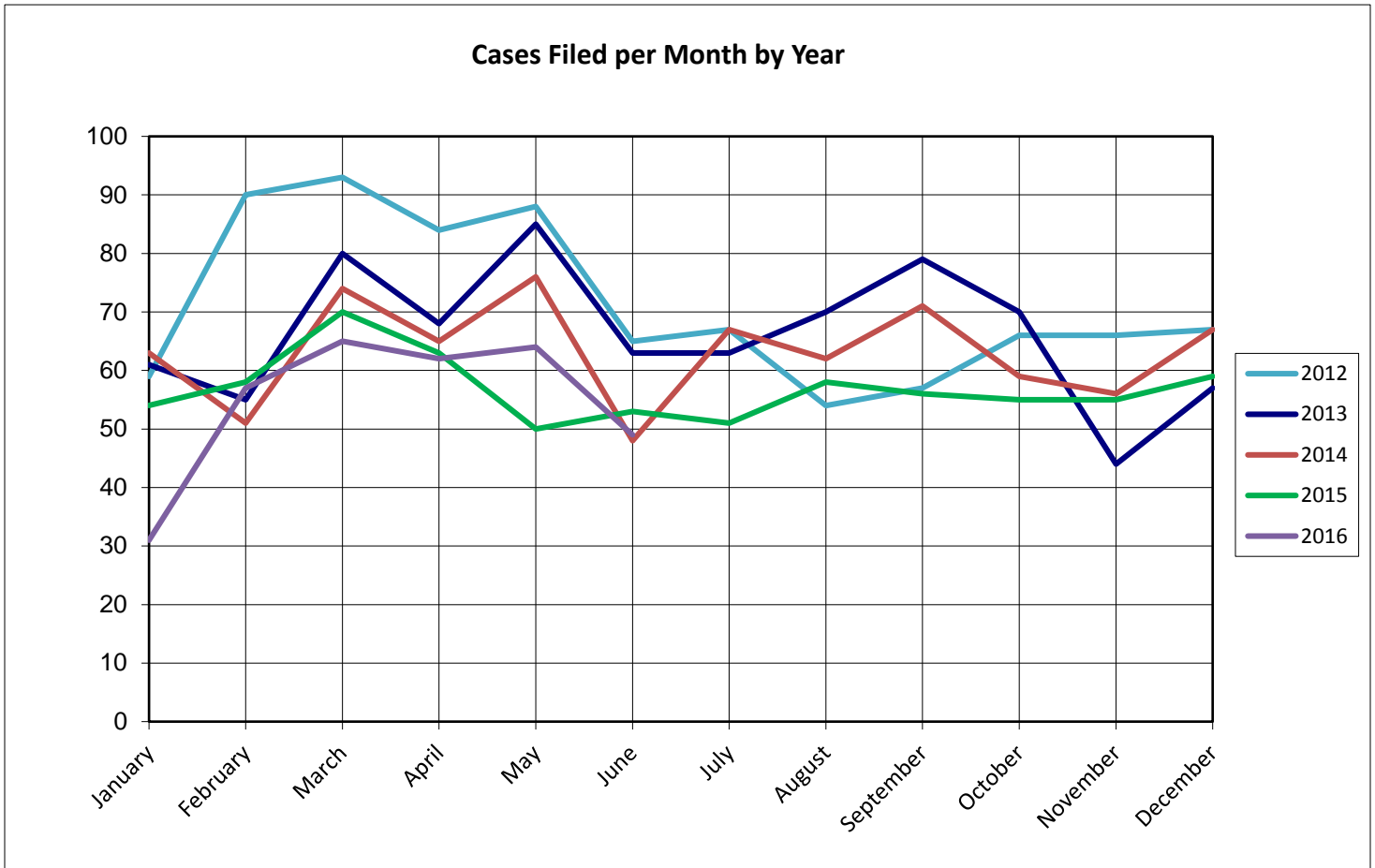
# United States Bankruptcy Court for the District of Columbia

## Report on Bankruptcy Case Filings June 2016

	Month Total	2016 YTD Total	2015 YTD Total
Ch. 7	36	264	272 (-8)
Ch. 13	12	56	67 (-11)
Ch. 11	1	8	9 (-1)
	49	328	348 (-20)

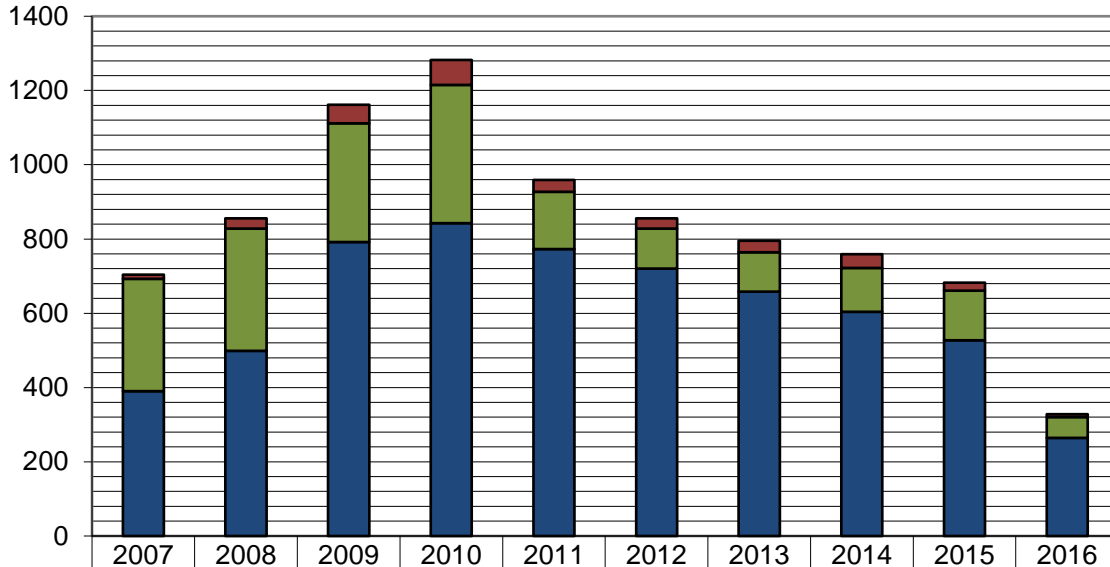
As of June 30, 2016:

- ◆ The projected total cases for 2016 is **661**
- ◆ Compared to 2015, filings decreased by **5.7%**
- ◆ An average of **1.8** cases were filed each day





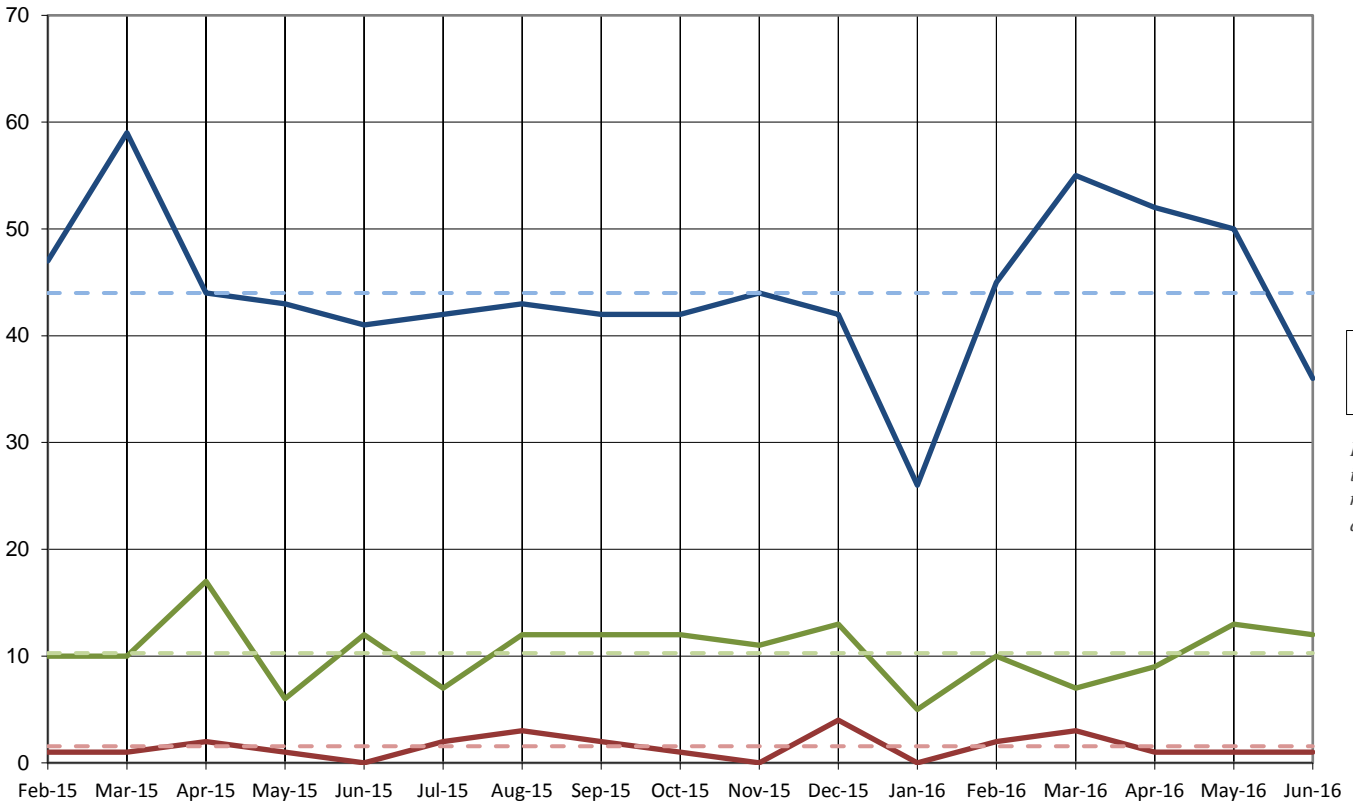
### Total Cases Filed per Year



- Chapter 11
- Chapter 13
- Chapter 7

	2007	2008	2009	2010	2011	2012	2013	2014	2015	2016
■ Chapter 11	11	28	50	67	32	28	31	37	21	8
■ Chapter 13	303	329	320	372	154	108	106	118	134	56
■ Chapter 7	390	499	792	843	773	720	658	604	527	264
<b>Total</b>	<b>704</b>	<b>856</b>	<b>1162</b>	<b>1282</b>	<b>959</b>	<b>856</b>	<b>795</b>	<b>759</b>	<b>682</b>	<b>328</b>

### Cases Filed Per Month by Chapter - 18 months

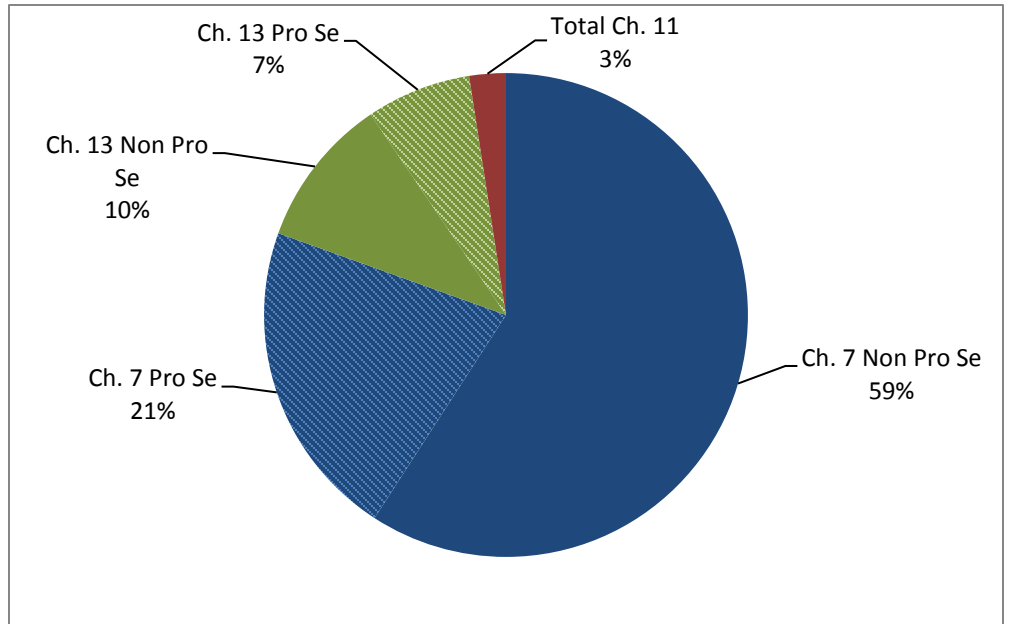


- 7
- 13
- 11

*Dashed lines indicate 18-month average*

### Pro Se Filings through June 2016

	Total	Pro Se
Ch. 7	264	70
Ch. 13	56	23
Ch. 11	8	0



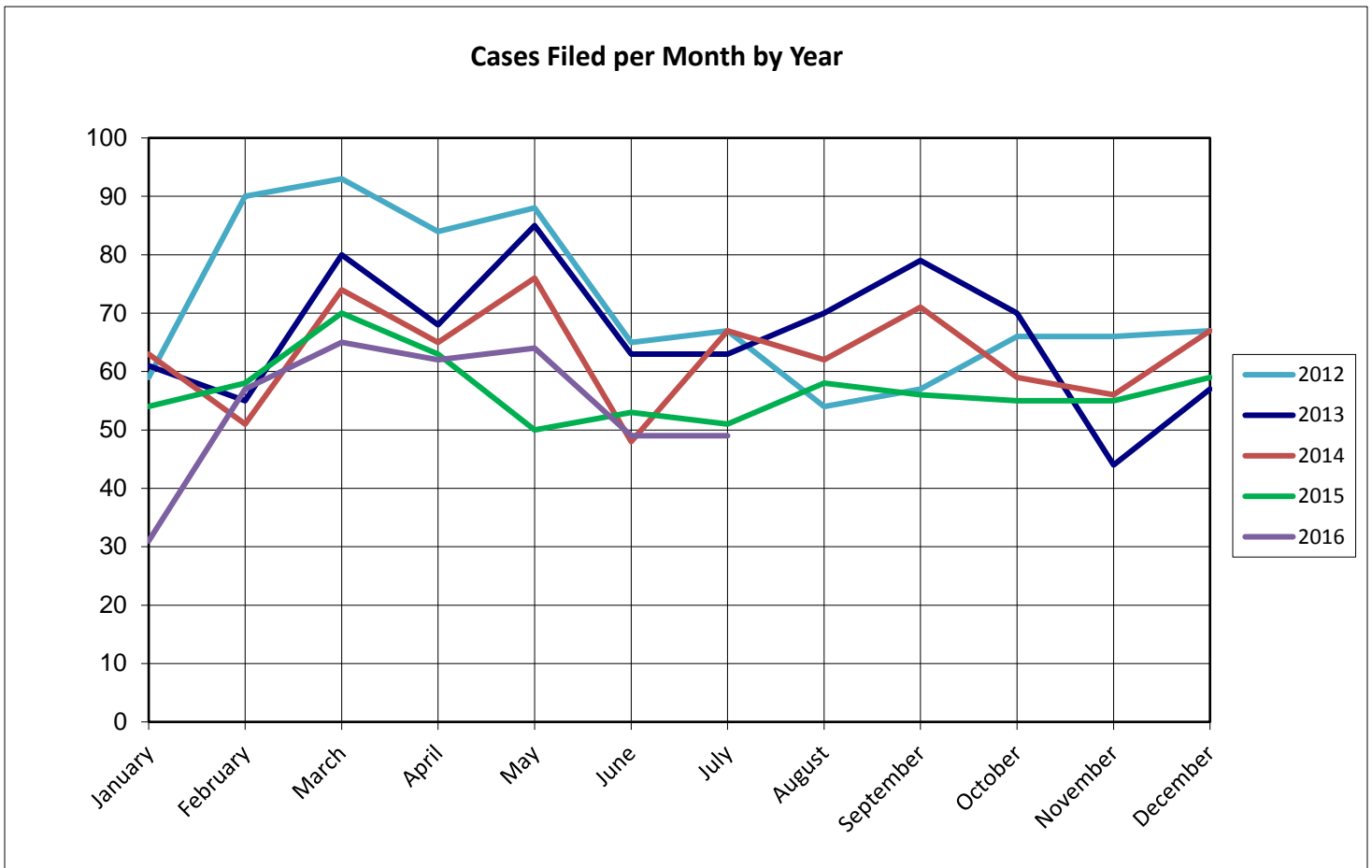
# United States Bankruptcy Court for the District of Columbia

## Report on Bankruptcy Case Filings July 2016

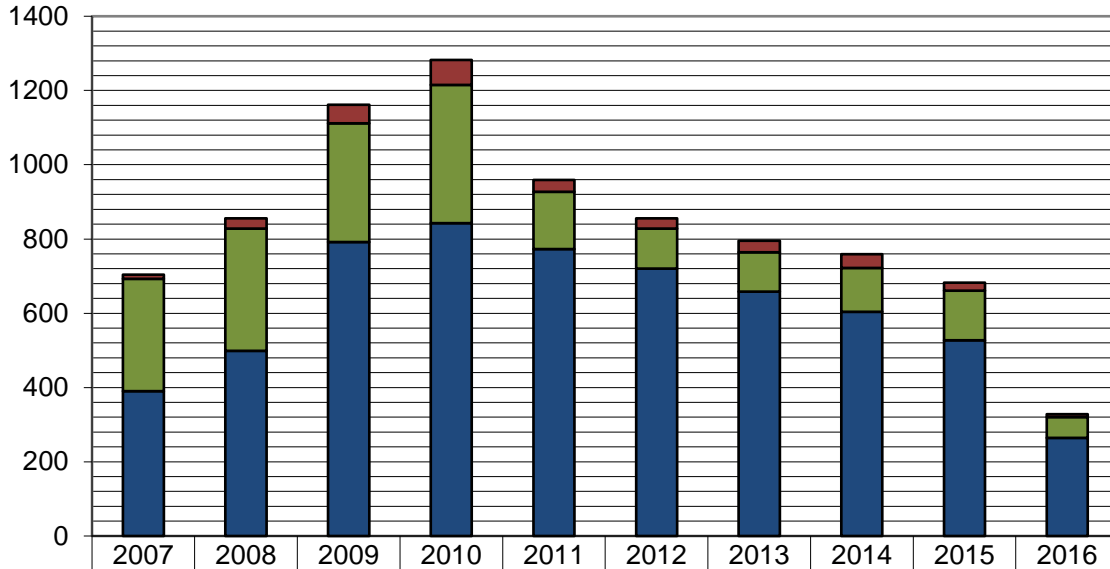
	Month Total	2016 YTD Total	2015 YTD Total
Ch. 7	39	303	314 (-11)
Ch. 13	7	63	74 (-11)
Ch. 11	3	11	11 (-0)
	49	377	399 (-22)

As of July 31, 2016:

- ◆ The projected total cases for 2016 is **649**
- ◆ Compared to 2015, filings decreased by **5.5%**
- ◆ An average of **1.8** cases were filed each day



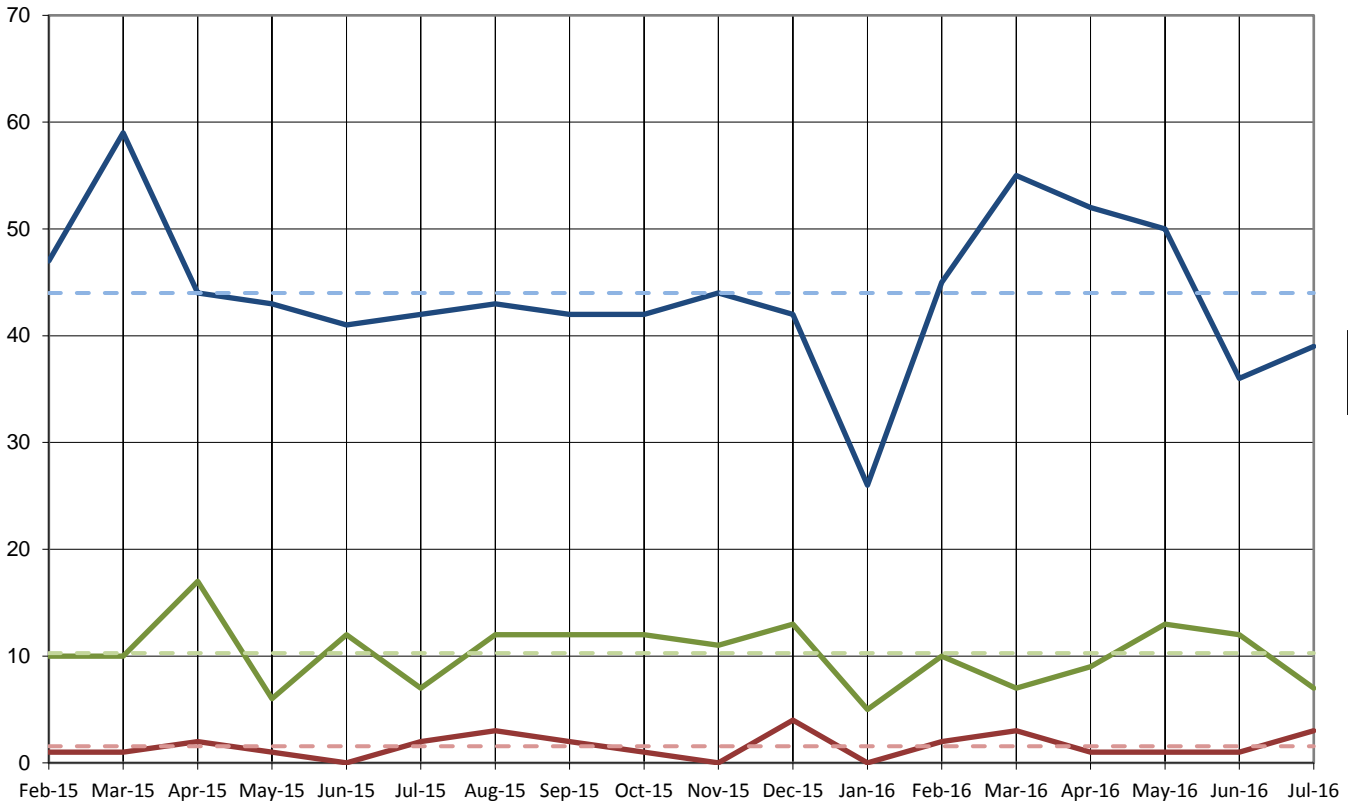
### Total Cases Filed per Year



- Chapter 11
- Chapter 13
- Chapter 7

	2007	2008	2009	2010	2011	2012	2013	2014	2015	2016
■ Chapter 11	11	28	50	67	32	28	31	37	21	8
■ Chapter 13	303	329	320	372	154	108	106	118	134	56
■ Chapter 7	390	499	792	843	773	720	658	604	527	264
<b>Total</b>	<b>704</b>	<b>856</b>	<b>1162</b>	<b>1282</b>	<b>959</b>	<b>856</b>	<b>795</b>	<b>759</b>	<b>682</b>	<b>377</b>

### Cases Filed Per Month by Chapter - 18 months

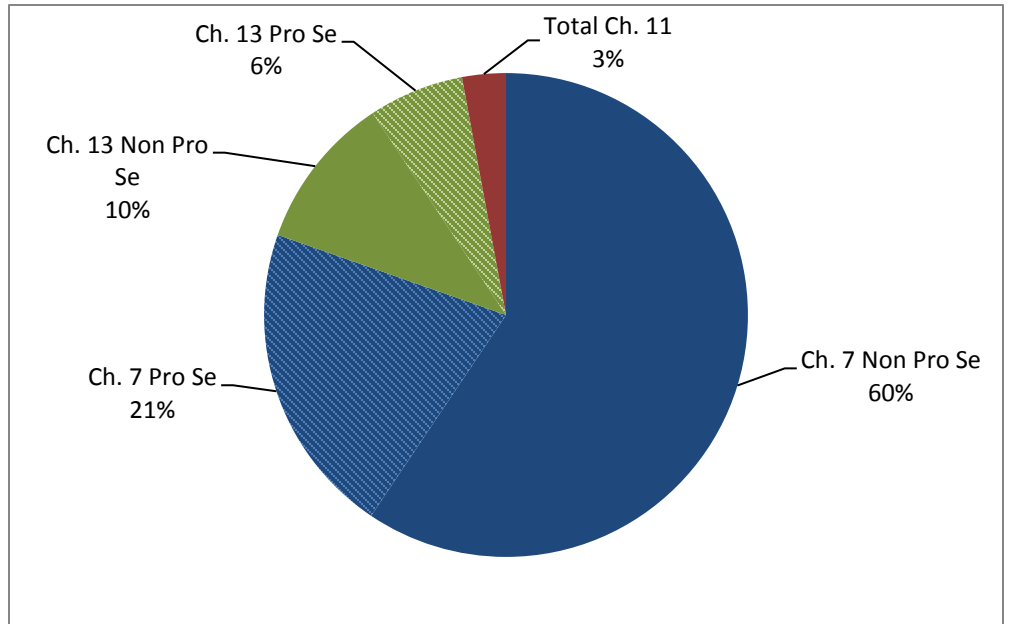


- 7
- 13
- 11

*Dashed lines indicate 18-month average*

### Pro Se Filings through July 2016

	Total	Pro Se
Ch. 7	303	79
Ch. 13	63	24
Ch. 11	11	0



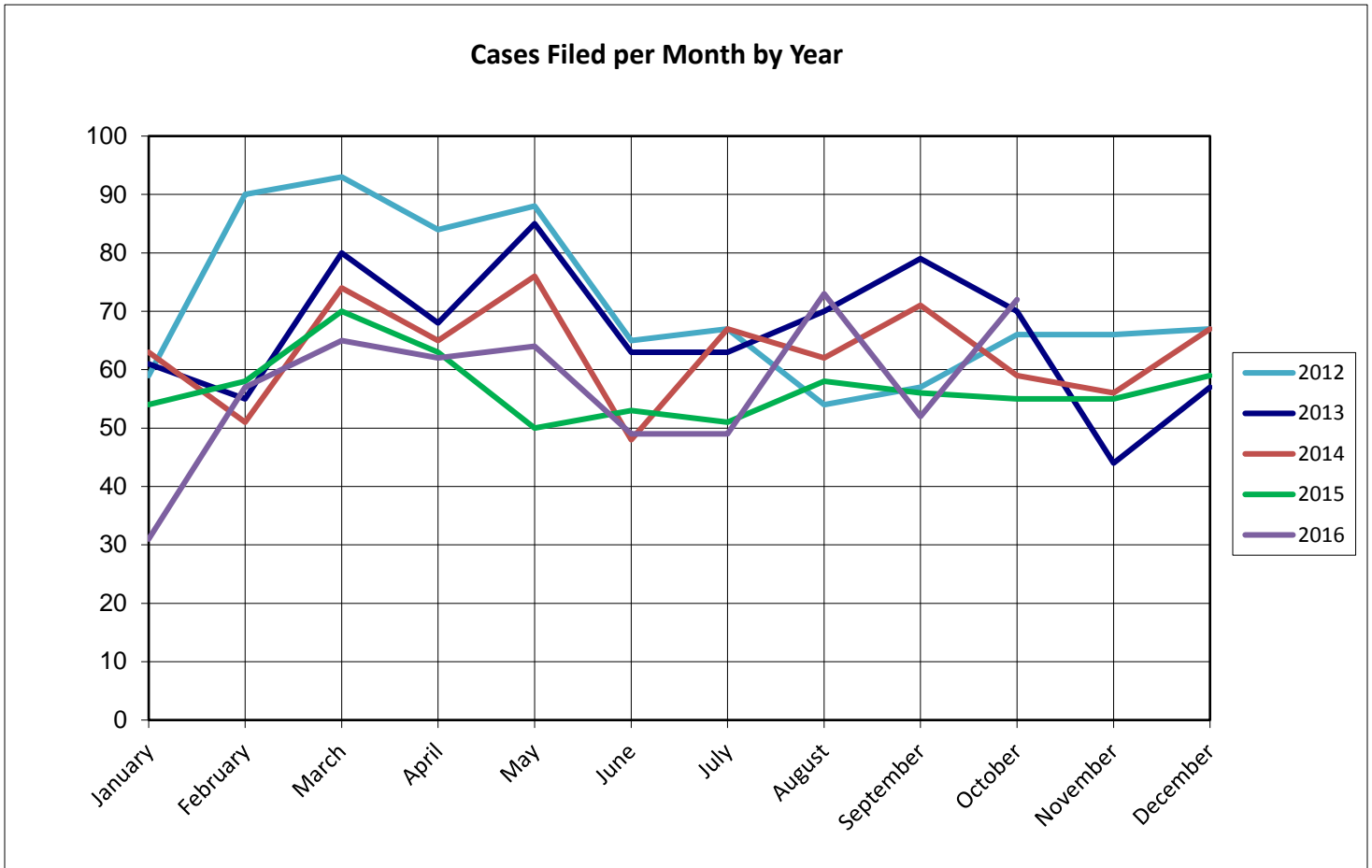
United States Bankruptcy Court for the District of Columbia

Report on Bankruptcy Case Filings  
October 2016

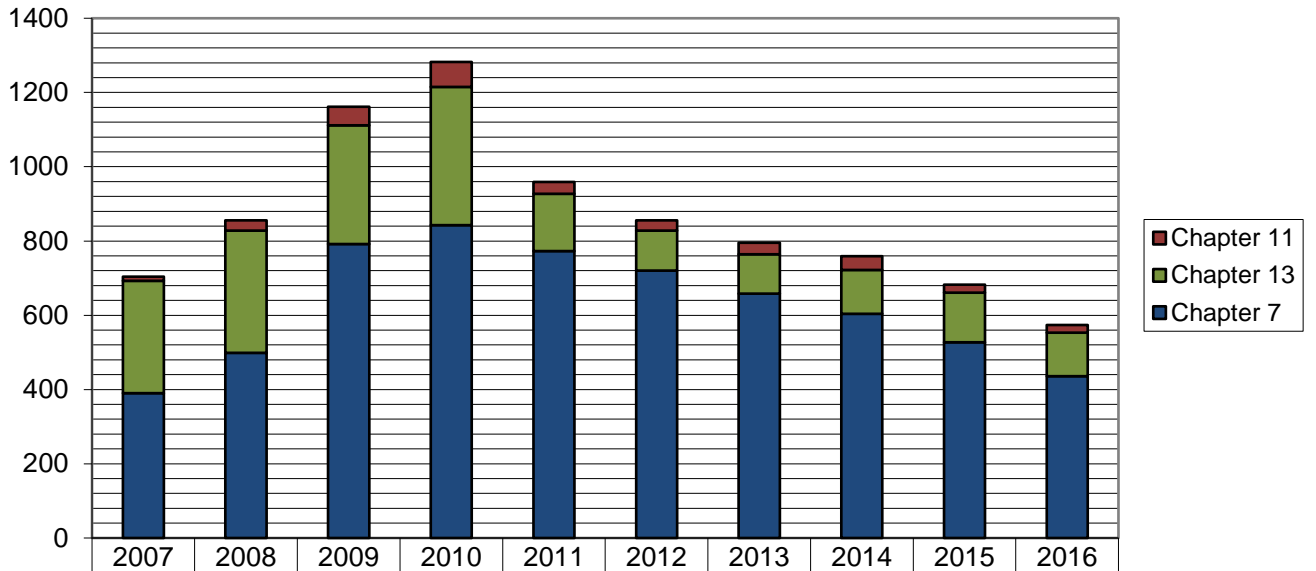
	Month Total	2016 YTD Total	2015 YTD Total
Ch. 7	48	436	441 (-5)
Ch. 13	23	117	110 (+7)
Ch. 11	1	21	17 (+4)
	72	574	568 (+6)

As of October 31, 2016:

- ◆ The projected total cases for 2016 is **689**
- ◆ Compared to 2015, filings increased by **1.1%**
- ◆ An average of **1.9** cases were filed each day

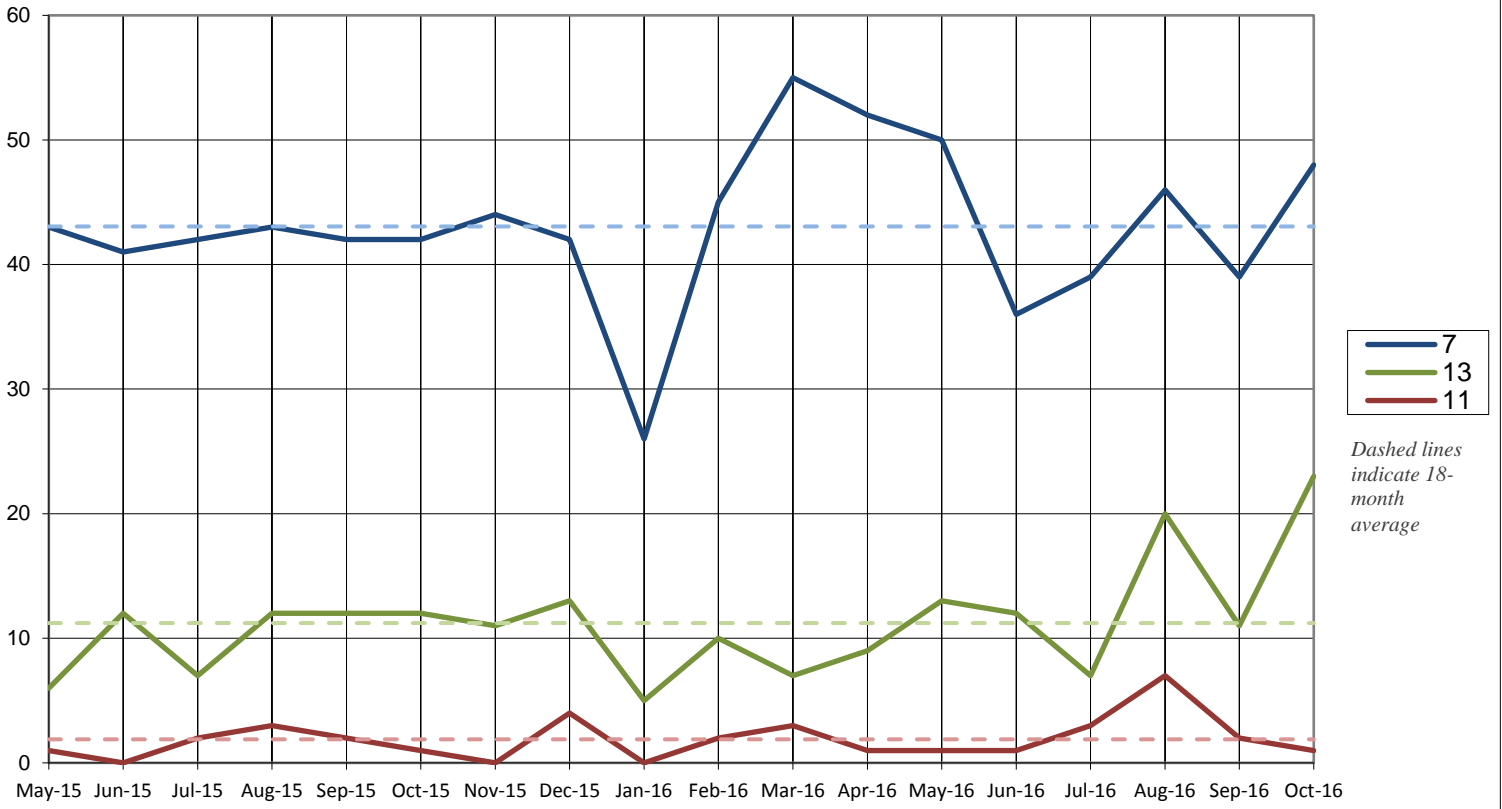


### Total Cases Filed per Year



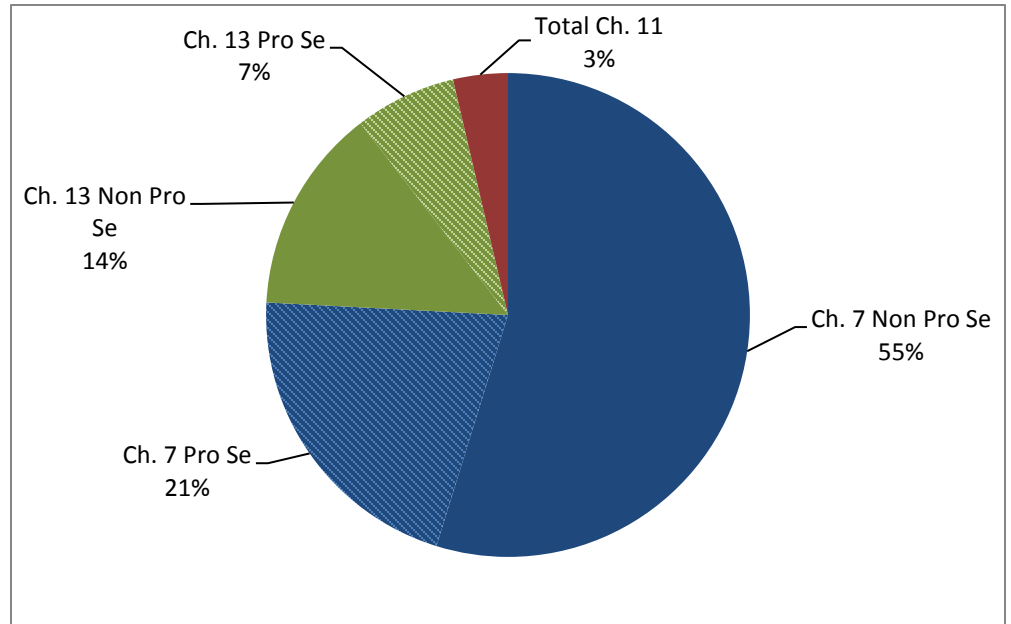
	2007	2008	2009	2010	2011	2012	2013	2014	2015	2016
Chapter 11	11	28	50	67	32	28	31	37	21	21
Chapter 13	303	329	320	372	154	108	106	118	134	117
Chapter 7	390	499	792	843	773	720	658	604	527	436
<b>Total</b>	<b>704</b>	<b>856</b>	<b>1162</b>	<b>1282</b>	<b>959</b>	<b>856</b>	<b>795</b>	<b>759</b>	<b>682</b>	<b>574</b>

### Cases Filed Per Month by Chapter - 18 months



### Pro Se Filings through October 2016

	Total	Pro Se
Ch. 7	436	121
Ch. 13	117	39
Ch. 11	21	2





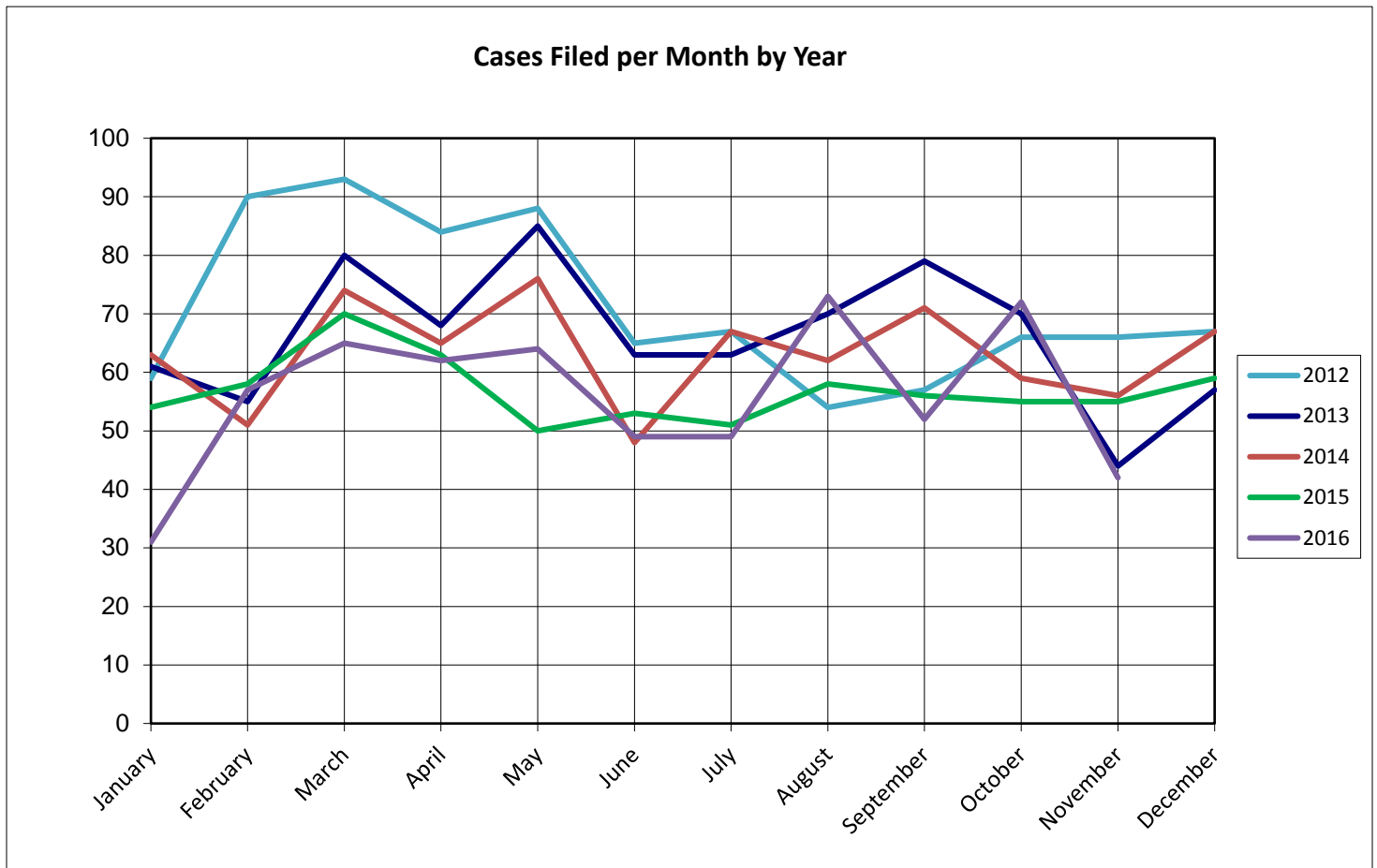
# United States Bankruptcy Court for the District of Columbia

## Report on Bankruptcy Case Filings November 2016

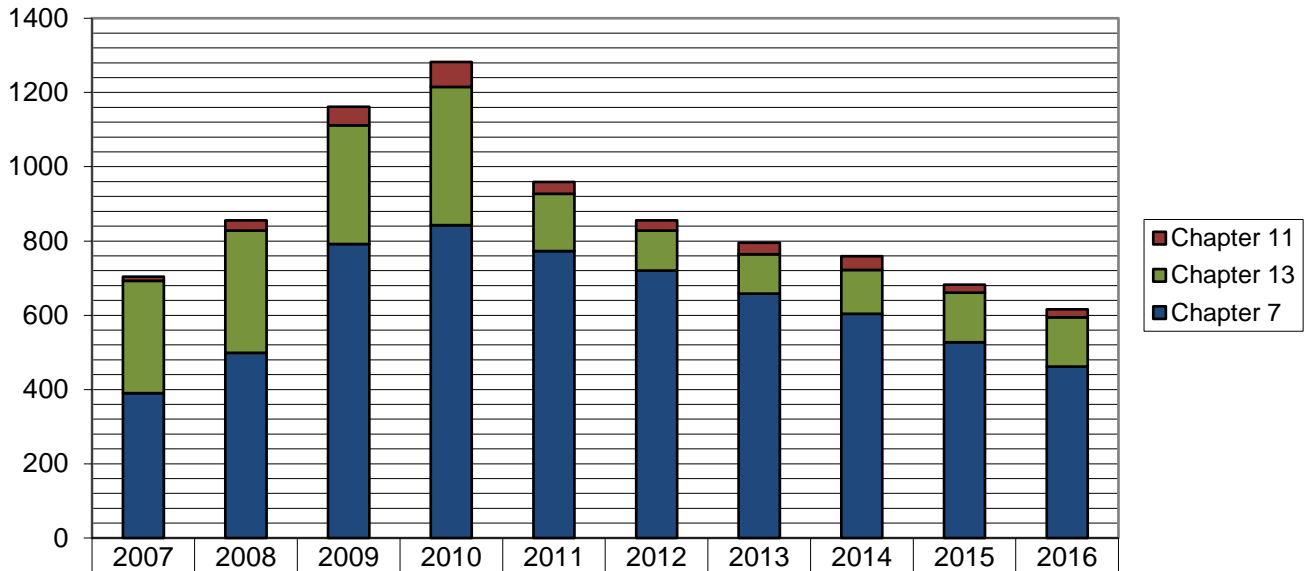
	Month Total	2016 YTD Total	2015 YTD Total
Ch. 7	26	462	485 (-23)
Ch. 13	15	132	121 (+11)
Ch. 11	1	22	17 (+5)
	42	616	623 (-7)

As of November 30, 2016:

- ◆ The projected total cases for 2016 is **673**
- ◆ Compared to 2015, filings decreased by **1.1%**
- ◆ An average of **1.8** cases were filed each day

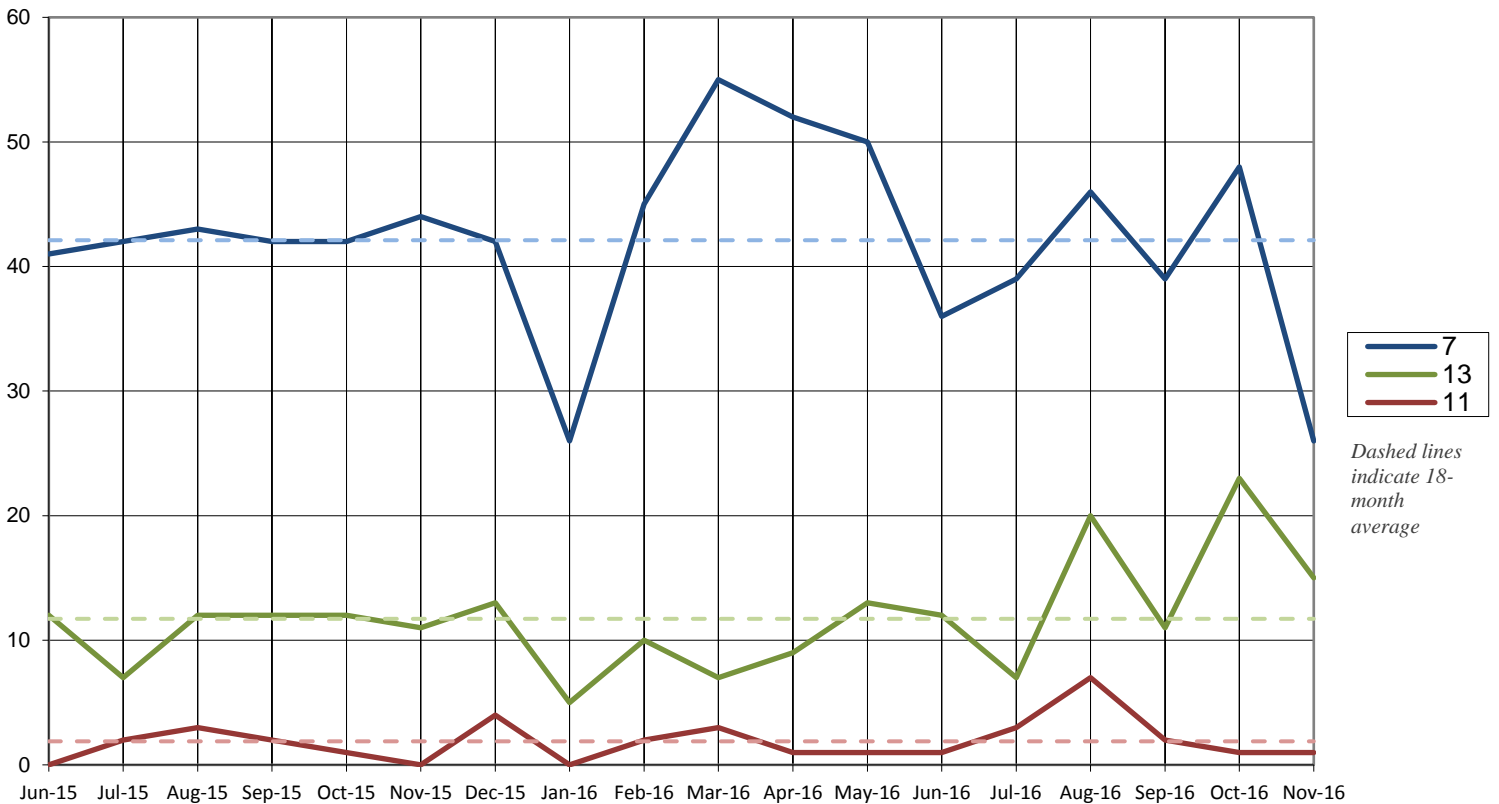


### Total Cases Filed per Year



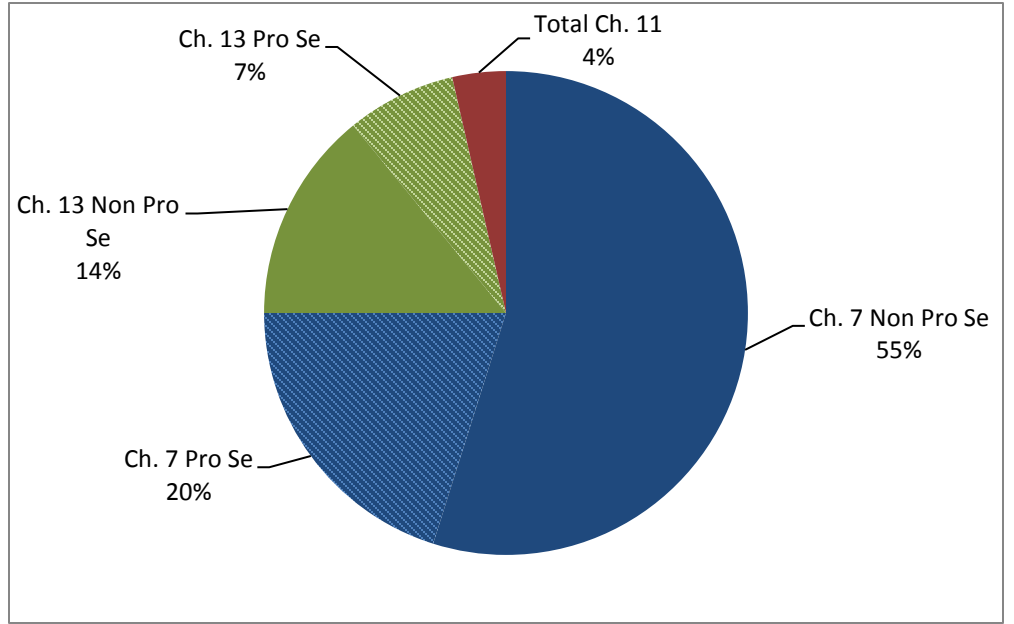
	2007	2008	2009	2010	2011	2012	2013	2014	2015	2016
Chapter 11	11	28	50	67	32	28	31	37	21	22
Chapter 13	303	329	320	372	154	108	106	118	134	132
Chapter 7	390	499	792	843	773	720	658	604	527	462
<b>Total</b>	<b>704</b>	<b>856</b>	<b>1162</b>	<b>1282</b>	<b>959</b>	<b>856</b>	<b>795</b>	<b>759</b>	<b>682</b>	<b>616</b>

### Cases Filed Per Month by Chapter - 18 months



### Pro Se Filings through November 2016

	Total	Pro Se
Ch. 7	462	124
Ch. 13	132	45
Ch. 11	22	2



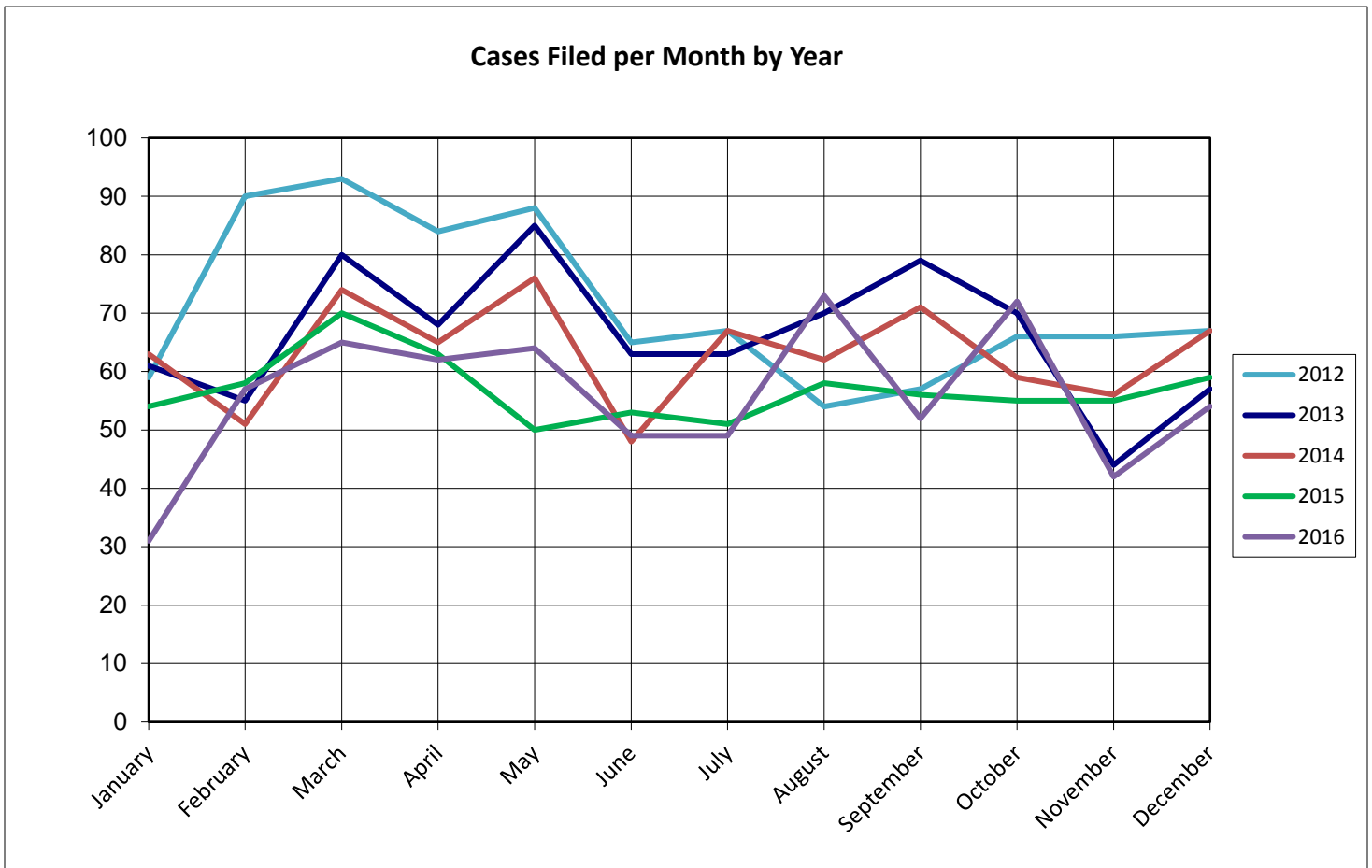
# United States Bankruptcy Court for the District of Columbia

## Report on Bankruptcy Case Filings December 2016

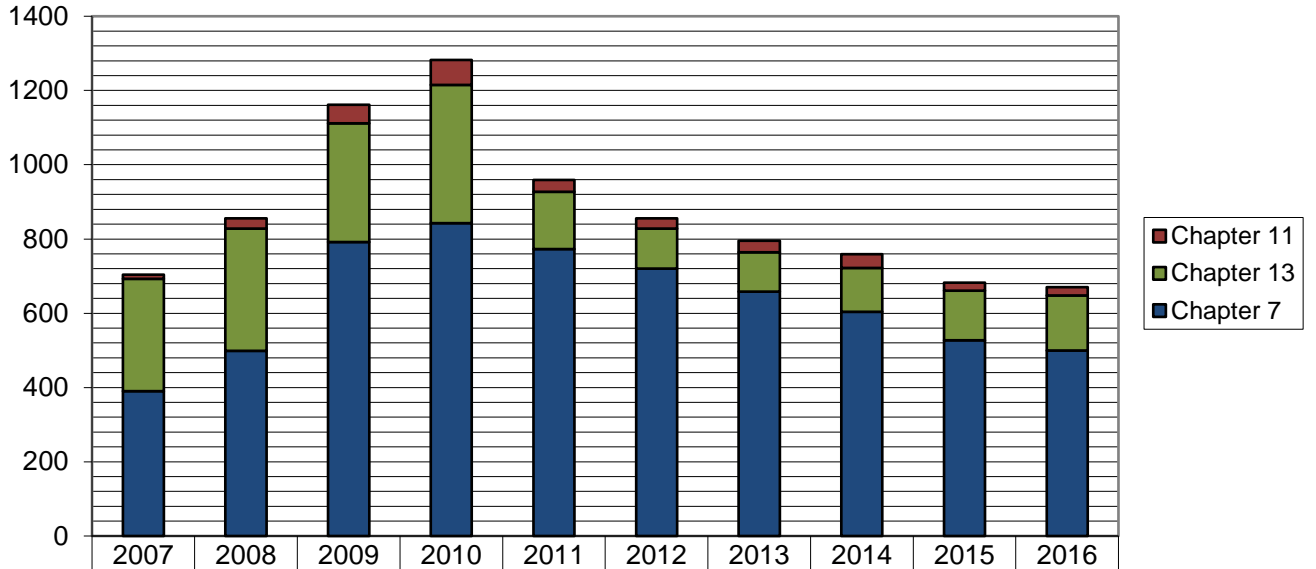
	Month Total	2016 Total	2015 YTD Total
Ch. 7	38	500	527 (-27)
Ch. 13	16	148	134 (+14)
Ch. 11	0	22	21 (+1)
	54	670	623 (-12)

As of December 31, 2016:

- ◆ The total cases for 2016 is **670**
- ◆ Compared to 2015, filings decreased by **1.8%**
- ◆ An average of **1.8** cases were filed each day

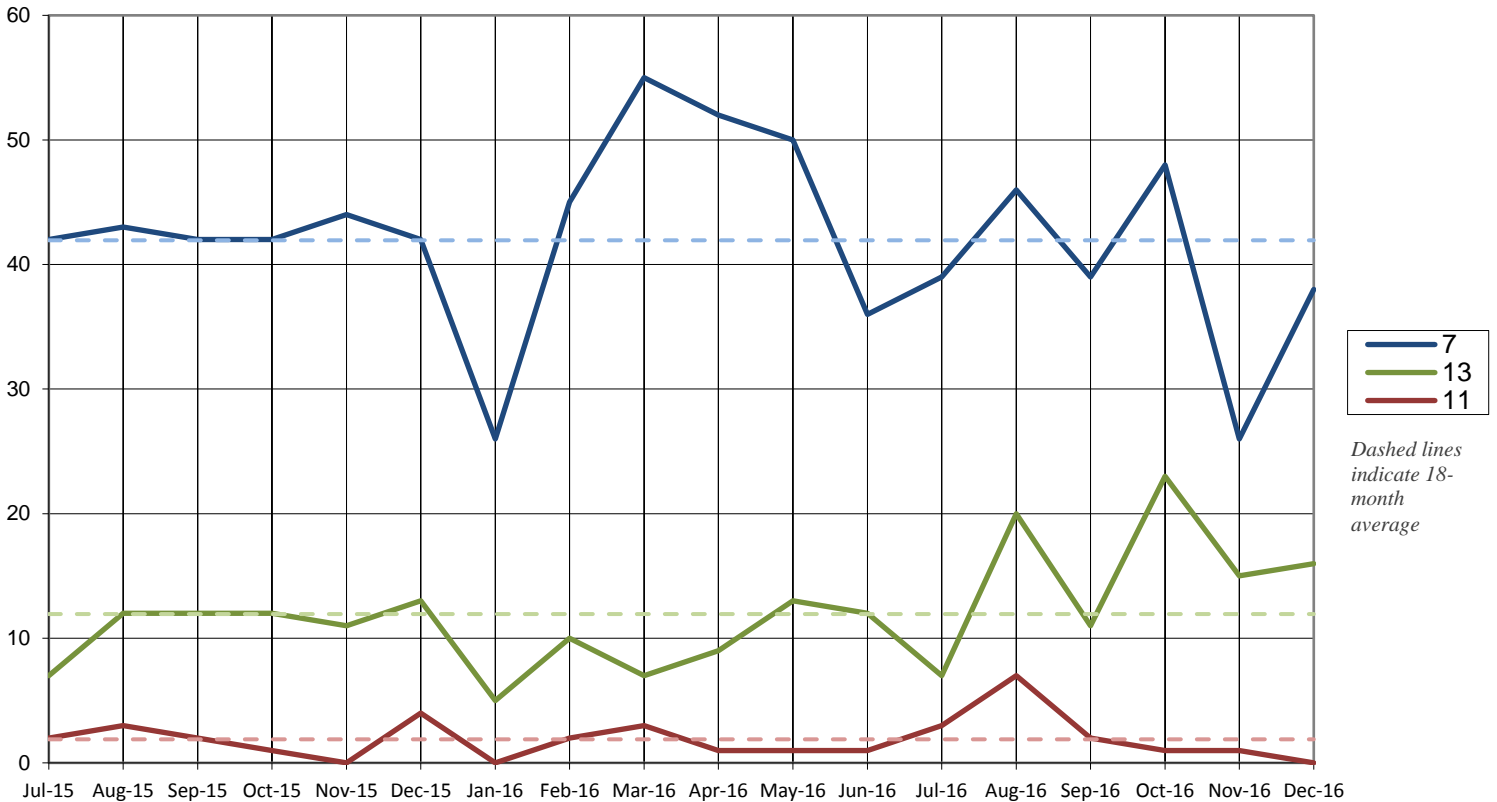


### Total Cases Filed per Year



	2007	2008	2009	2010	2011	2012	2013	2014	2015	2016
Chapter 11	11	28	50	67	32	28	31	37	21	22
Chapter 13	303	329	320	372	154	108	106	118	134	148
Chapter 7	390	499	792	843	773	720	658	604	527	500
<b>Total</b>	<b>704</b>	<b>856</b>	<b>1162</b>	<b>1282</b>	<b>959</b>	<b>856</b>	<b>795</b>	<b>759</b>	<b>682</b>	<b>670</b>

### Cases Filed Per Month by Chapter - 18 months



### Pro Se Filings 2016

	Total	Pro Se
Ch. 7	500	141
Ch. 13	148	52
Ch. 11	22	2

