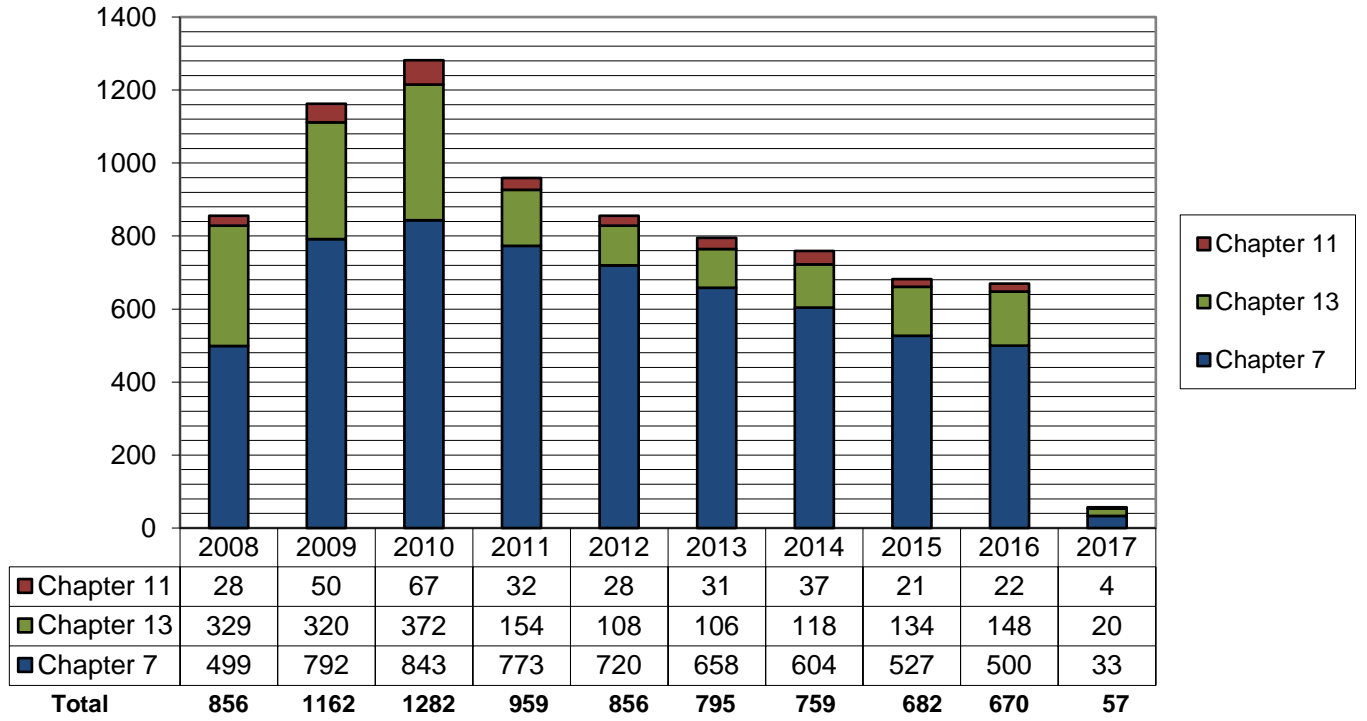
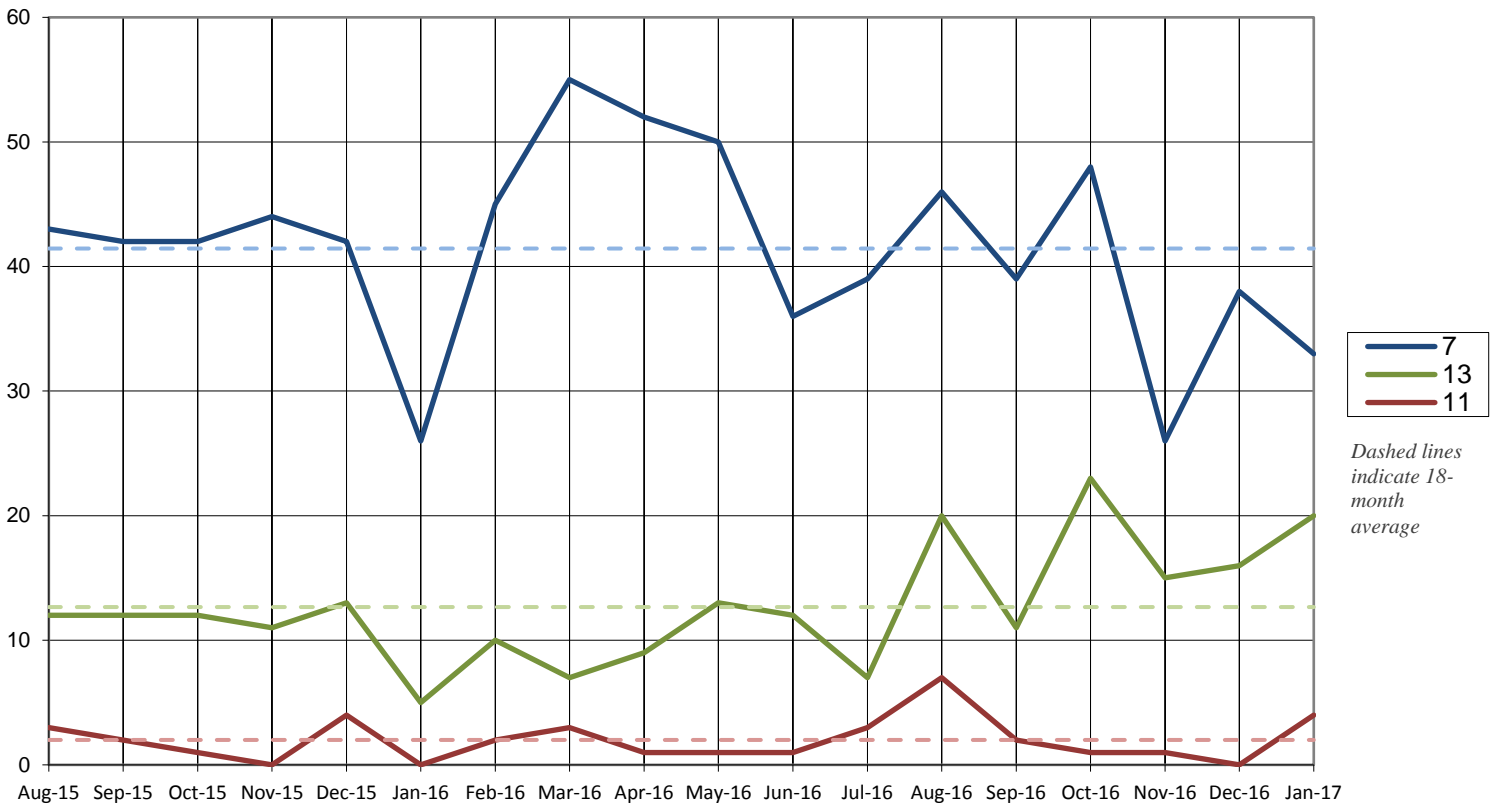


Total Cases Filed per Year

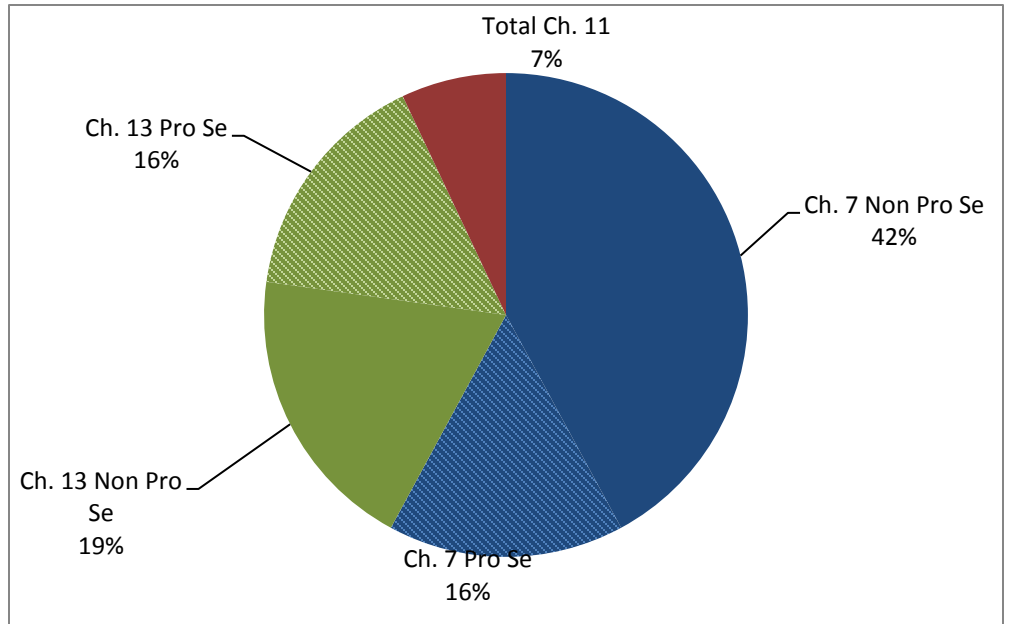


Cases Filed Per Month by Chapter - 18 months

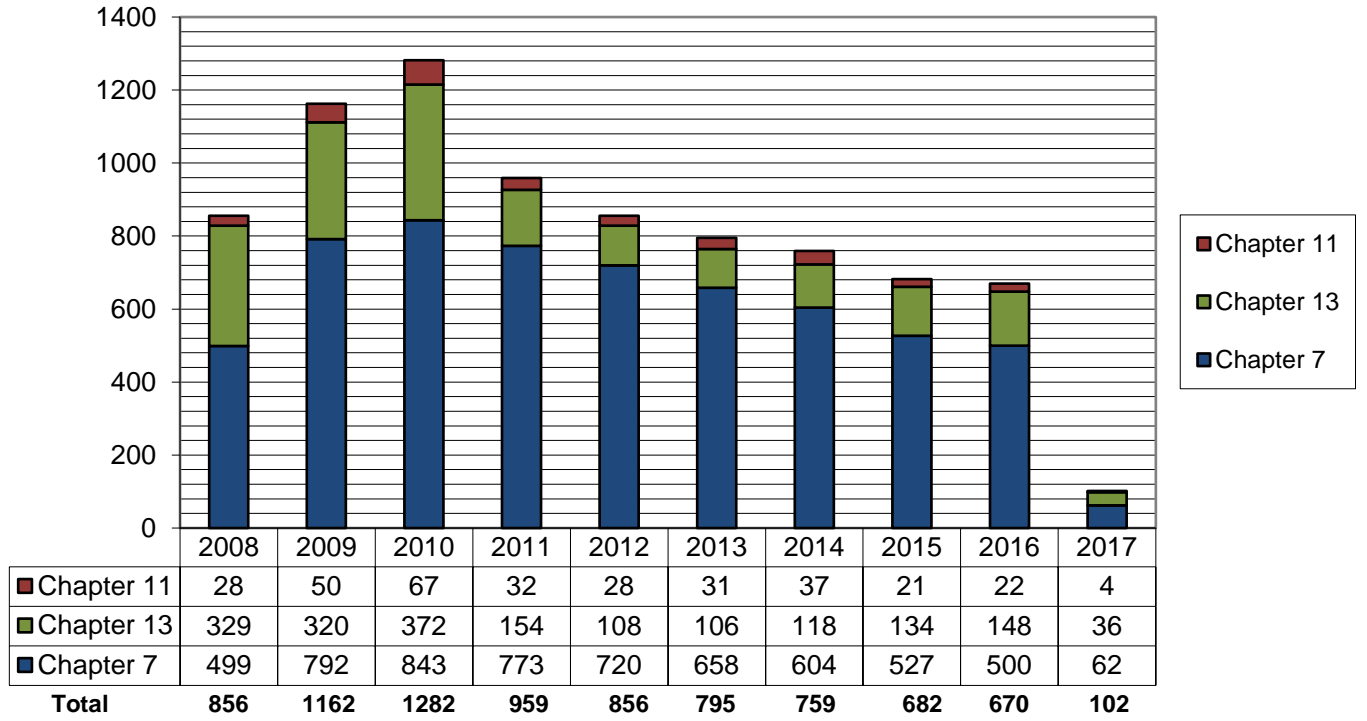


Pro Se Filings 2017

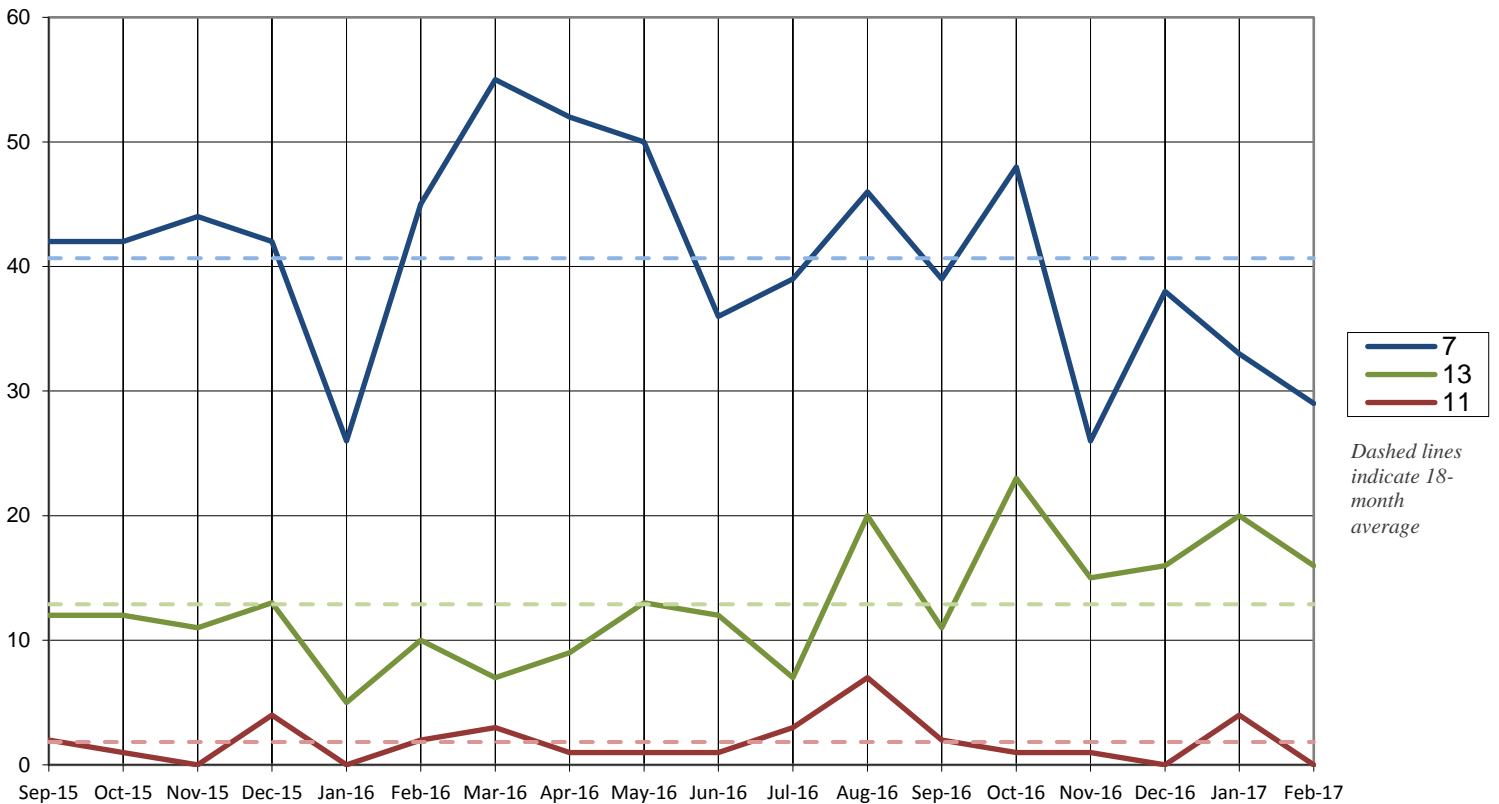
	Total	Pro Se
Ch. 7	33	9
Ch. 13	20	9
Ch. 11	4	0



Total Cases Filed per Year

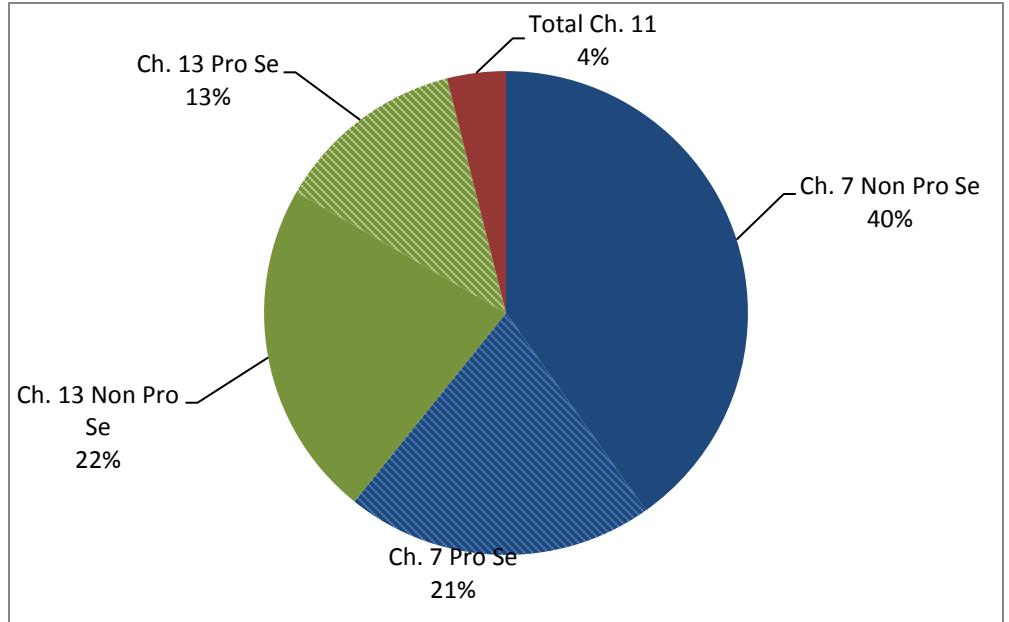


Cases Filed Per Month by Chapter - 18 months

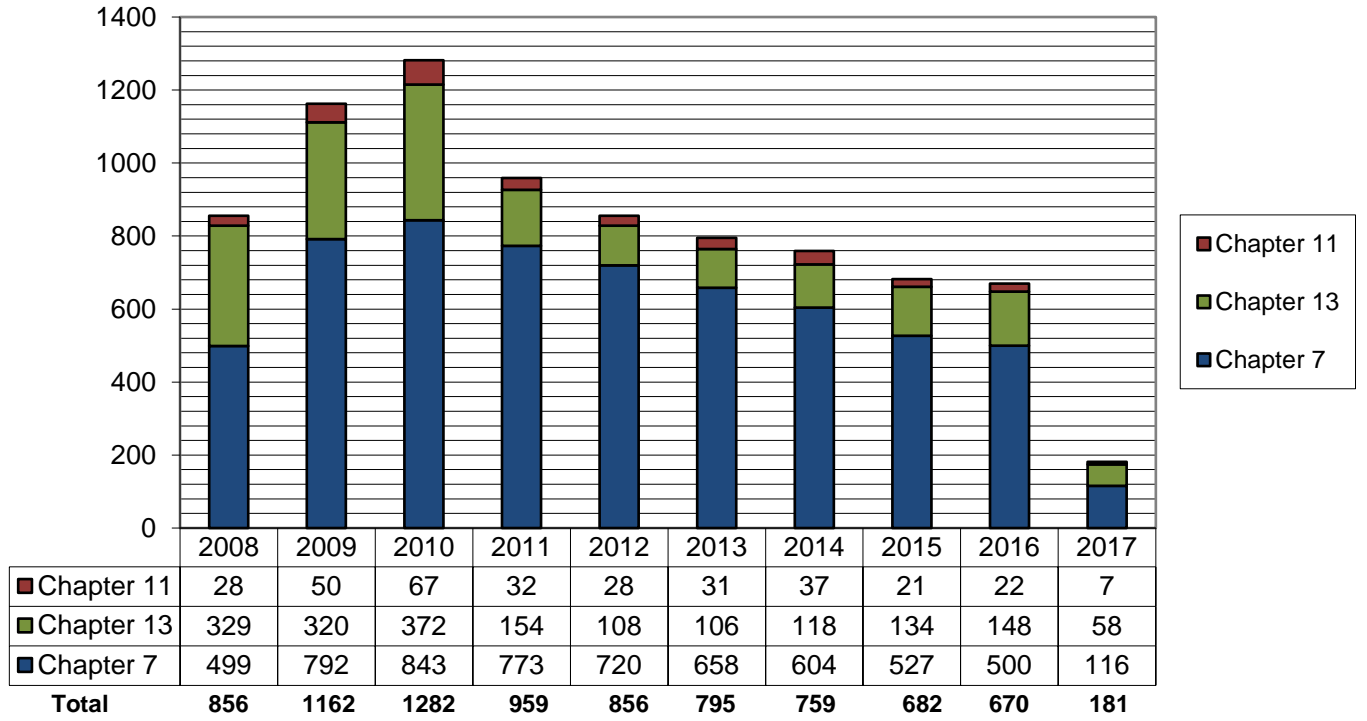


Pro Se Filings 2017

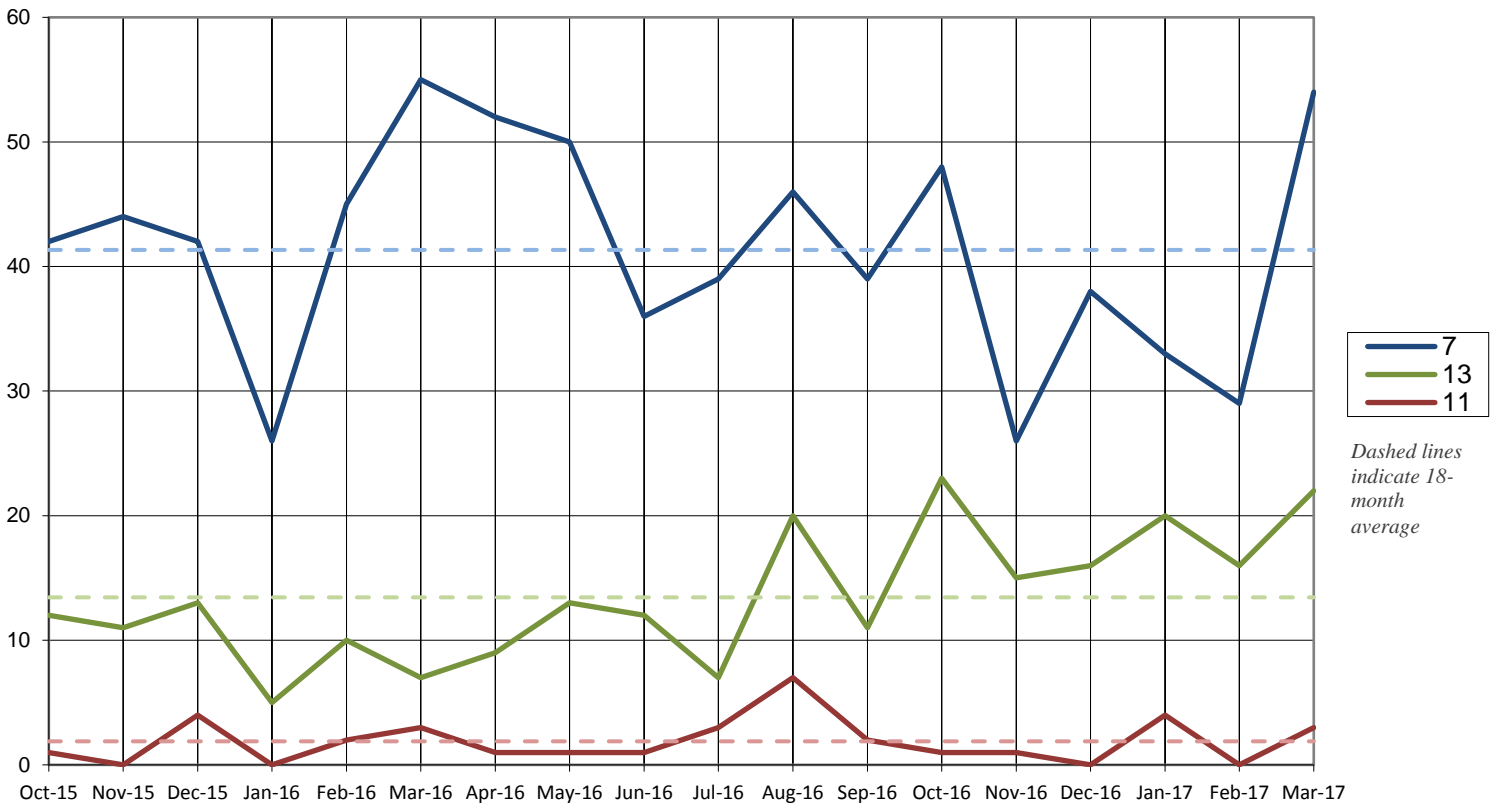
	Total	Pro Se
Ch. 7	62	21
Ch. 13	36	13
Ch. 11	4	0



Total Cases Filed per Year

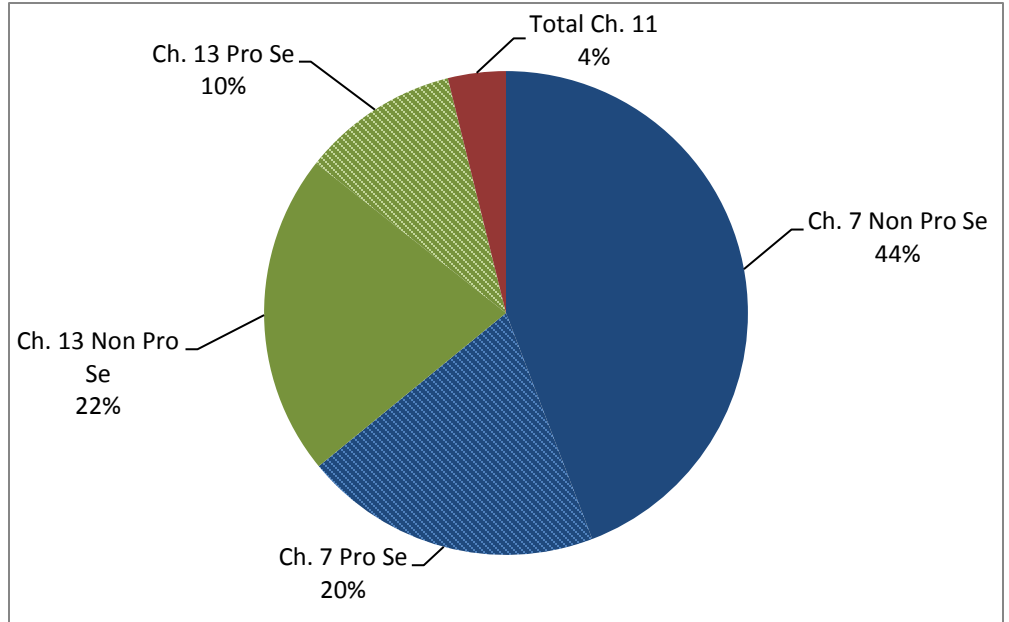


Cases Filed Per Month by Chapter - 18 months



Pro Se Filings 2017

	Total	Pro Se
Ch. 7	116	36
Ch. 13	58	19
Ch. 11	7	0



United States Bankruptcy Court for the District of Columbia

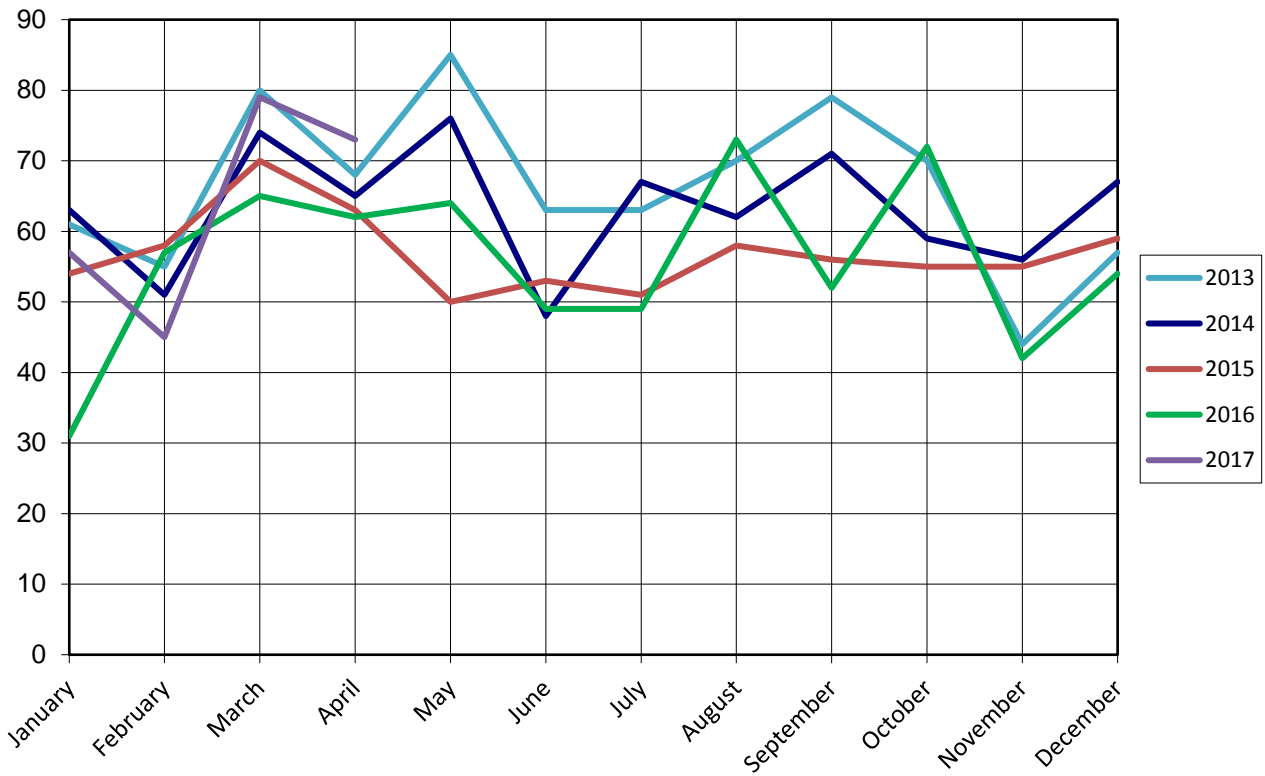
Report on Bankruptcy Case Filings April 2017

	Month Total	2017 Total	2016 YTD Total
Ch. 7	55	171	178 (-7)
Ch. 13	18	76	31 (+45)
Ch. 11	0	7	6 (+1)
	73	254	215 (+39)

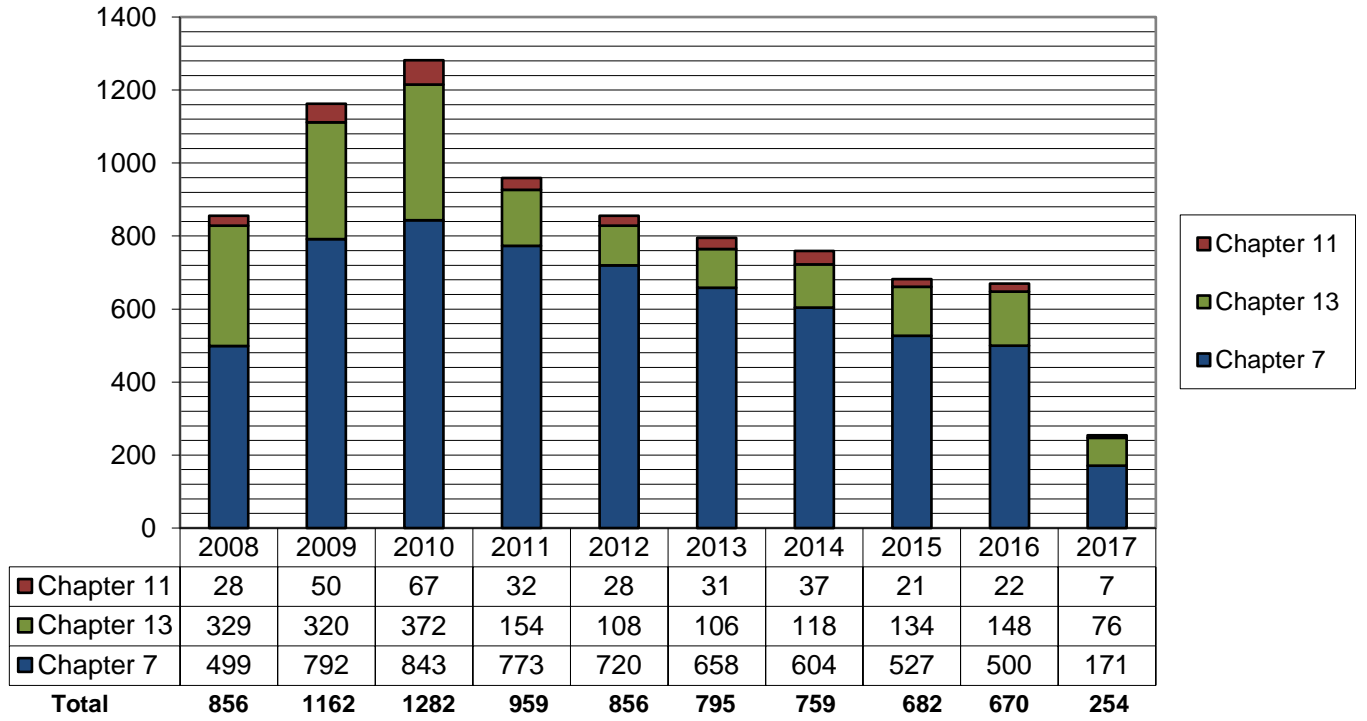
As of April 30, 2017:

- ◆ The projected total of cases for 2017 is **773**
- ◆ Compared to 2015, filings increased by **18.1%**
- ◆ An average of **2.1** cases were filed each day

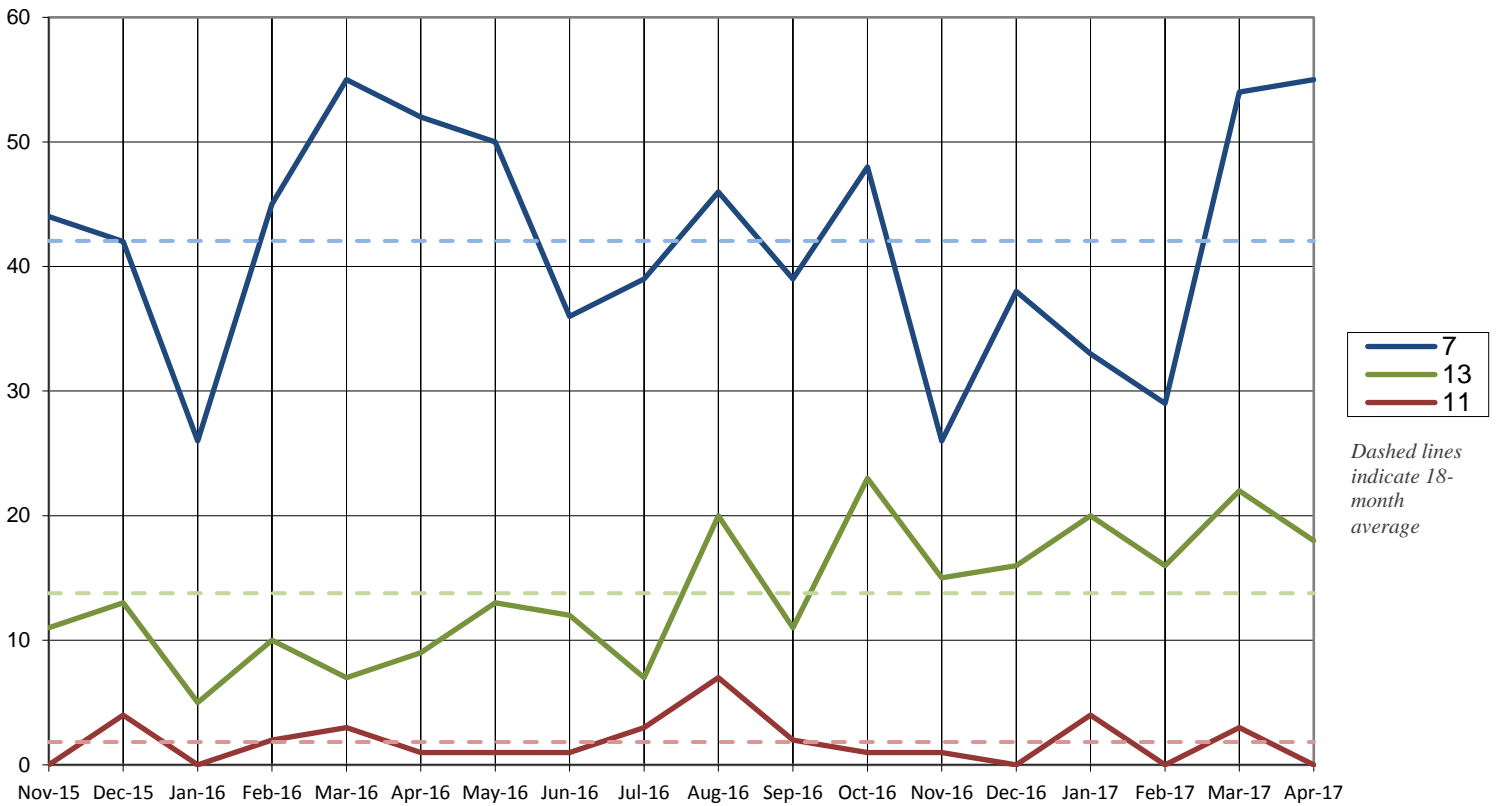
Cases Filed per Month by Year



Total Cases Filed per Year

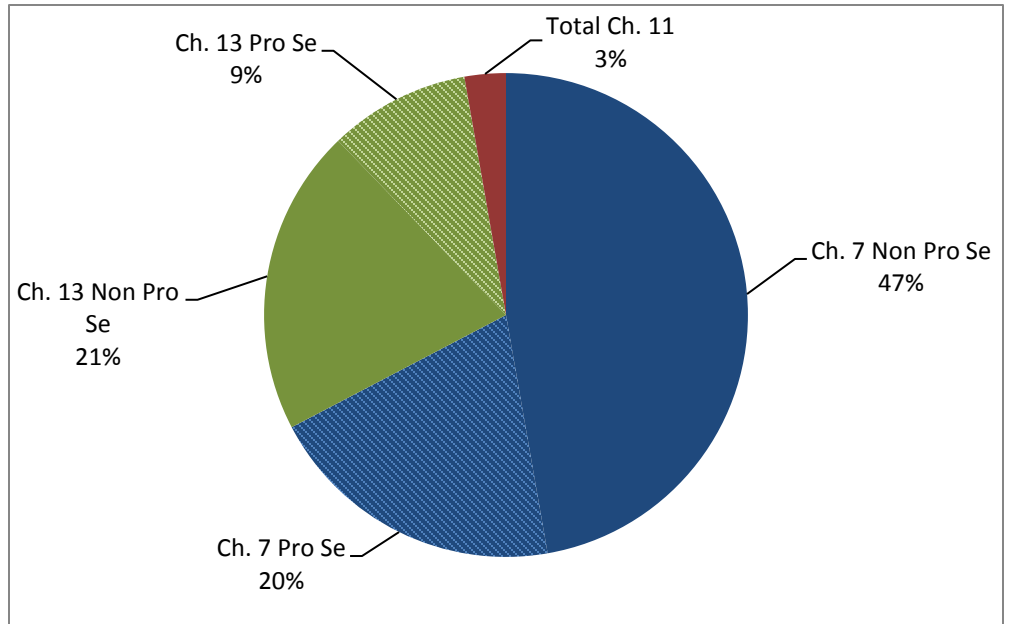


Cases Filed Per Month by Chapter - 18 months



Pro Se Filings 2017

	Total	Pro Se
Ch. 7	171	51
Ch. 13	76	24
Ch. 11	7	0



United States Bankruptcy Court for the District of Columbia

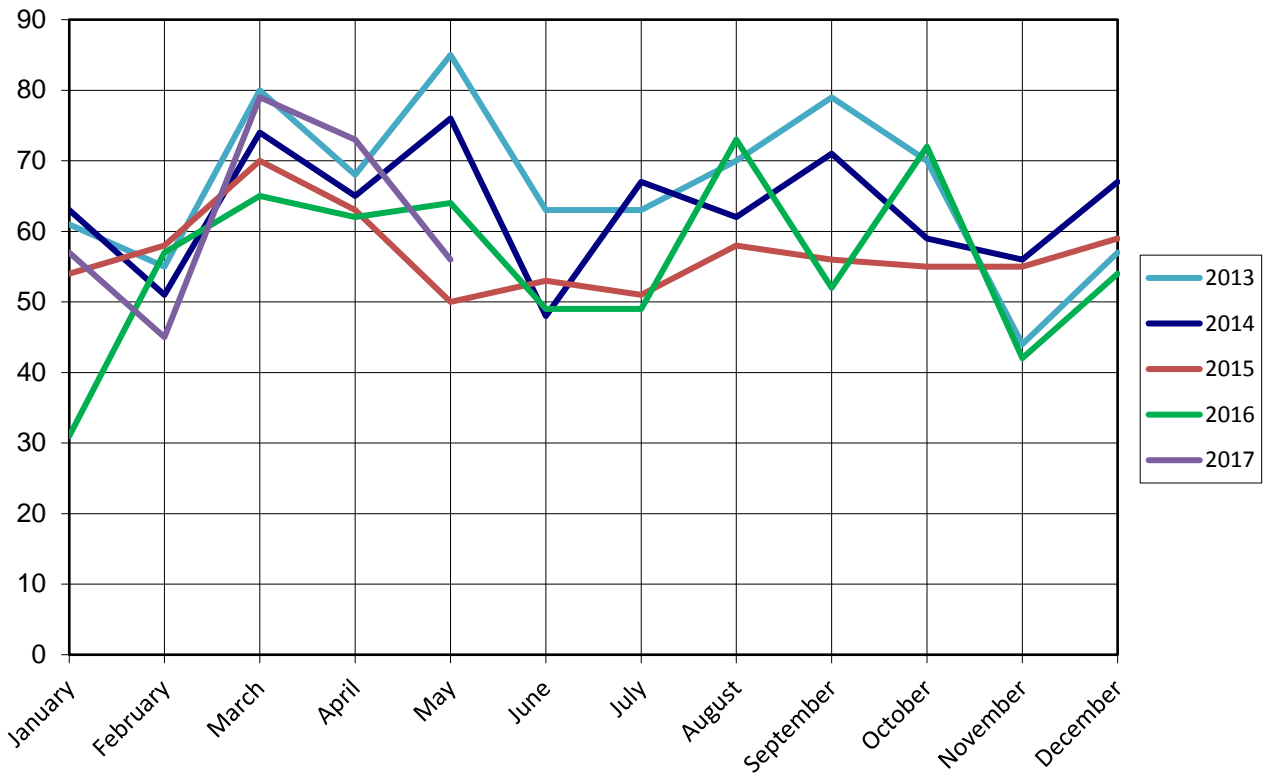
Report on Bankruptcy Case Filings May 2017

	Month Total	2017 Total	2016 YTD Total
Ch. 7	39	210	228 (-18)
Ch. 13	13	89	44 (+45)
Ch. 11	4	11	7 (+4)
	56	310	279 (+31)

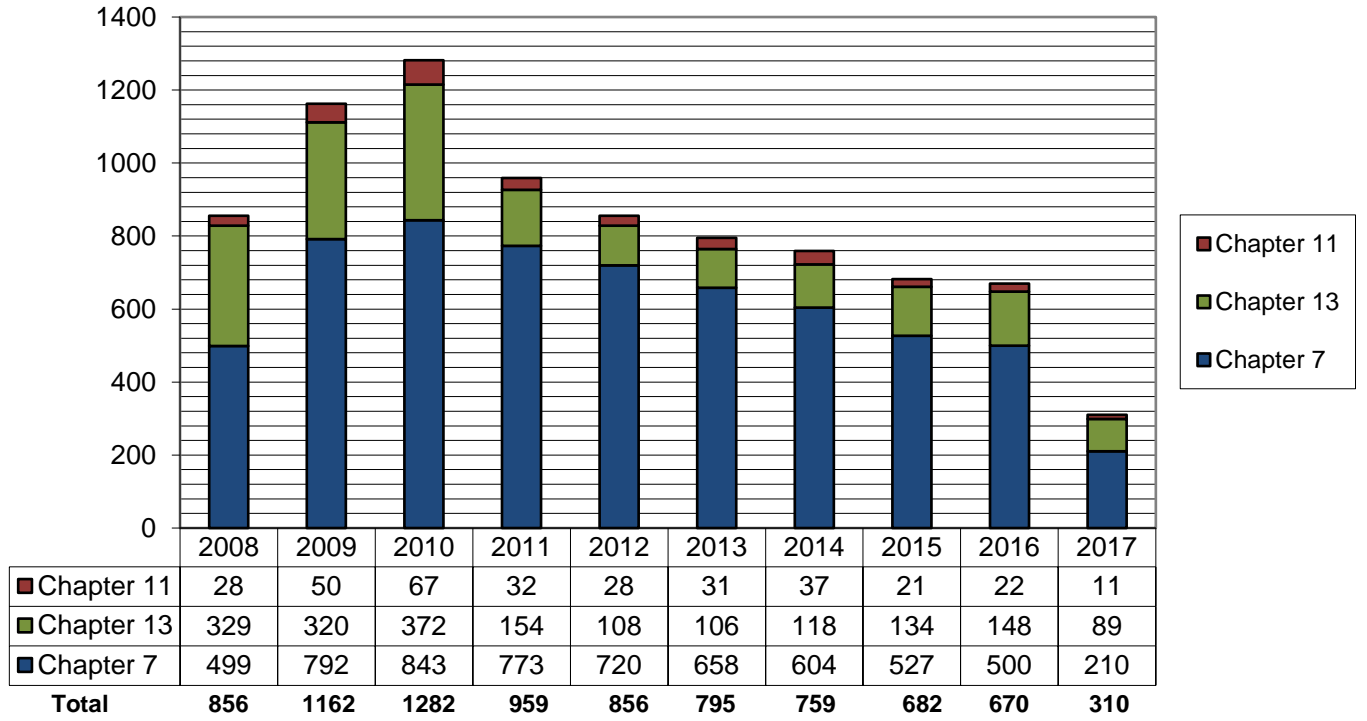
As of May 31, 2017:

- ◆ The projected total of cases for 2017 is **749**
- ◆ Compared to 2016, filings increased by **11.1%**
- ◆ An average of **2.1** cases were filed each day

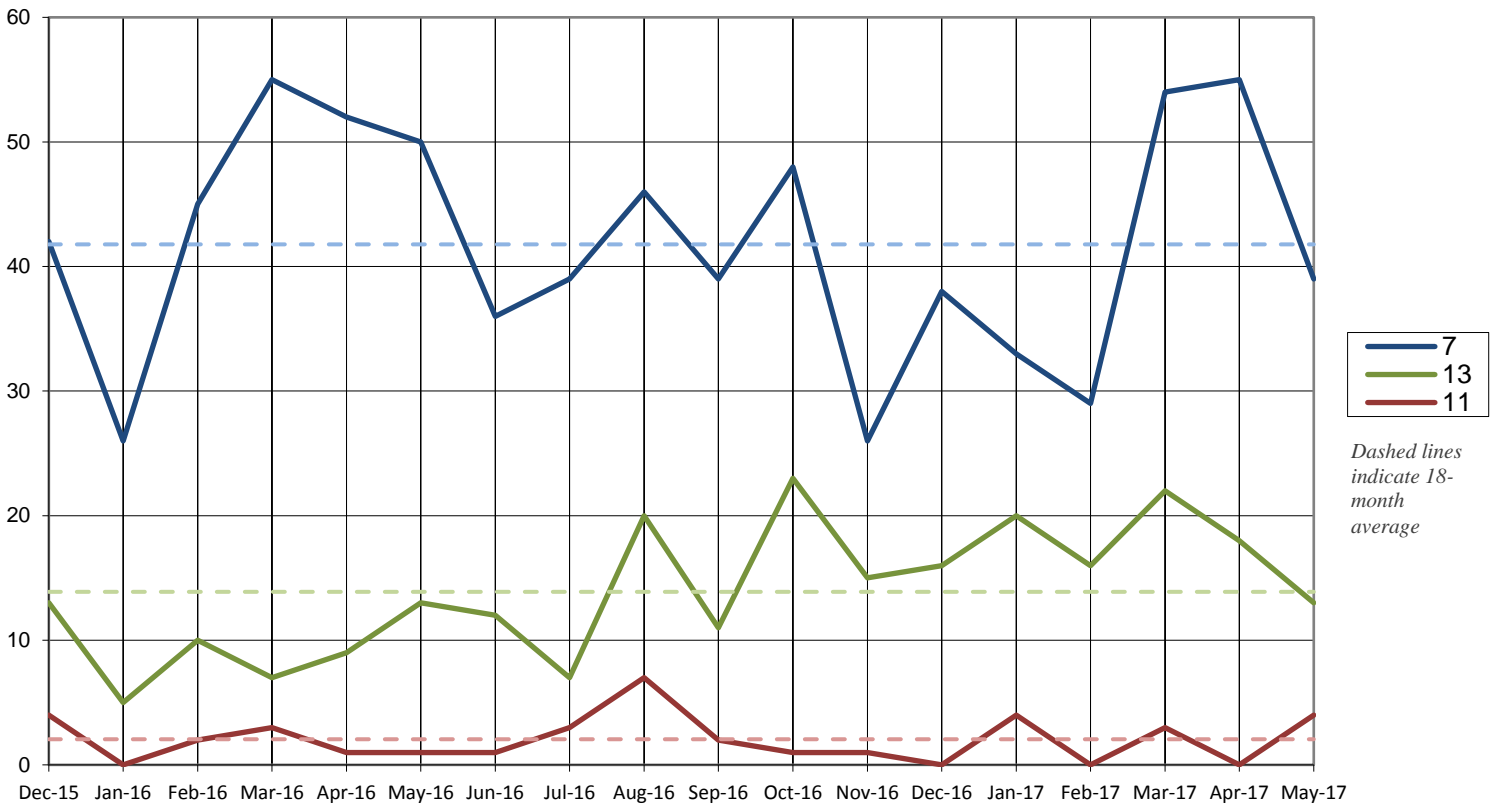
Cases Filed per Month by Year



Total Cases Filed per Year

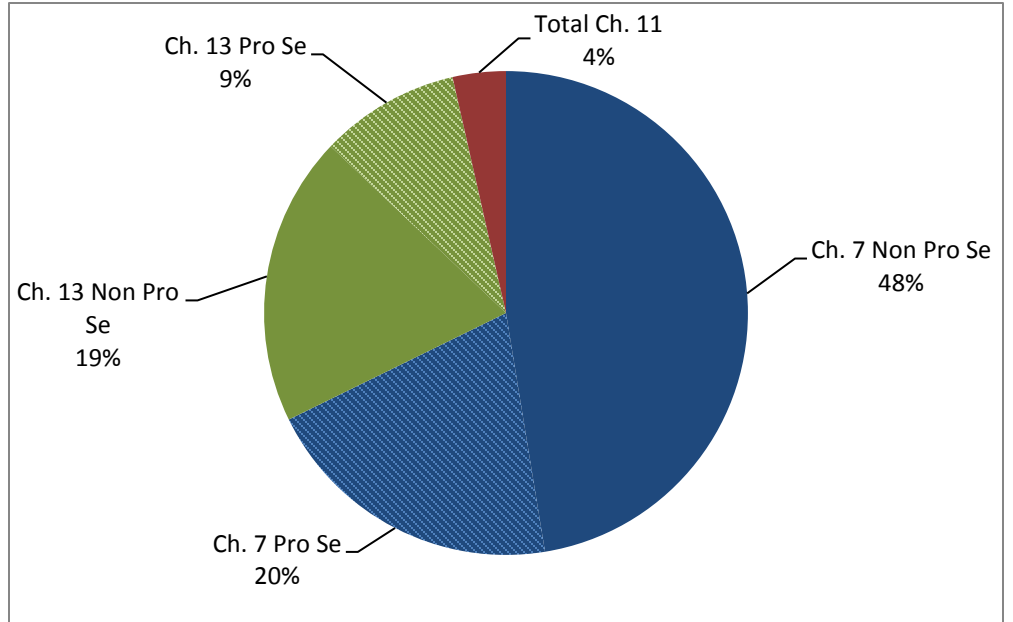


Cases Filed Per Month by Chapter - 18 months



Pro Se Filings 2017

	Total	Pro Se
Ch. 7	210	63
Ch. 13	89	29
Ch. 11	11	1



United States Bankruptcy Court for the District of Columbia

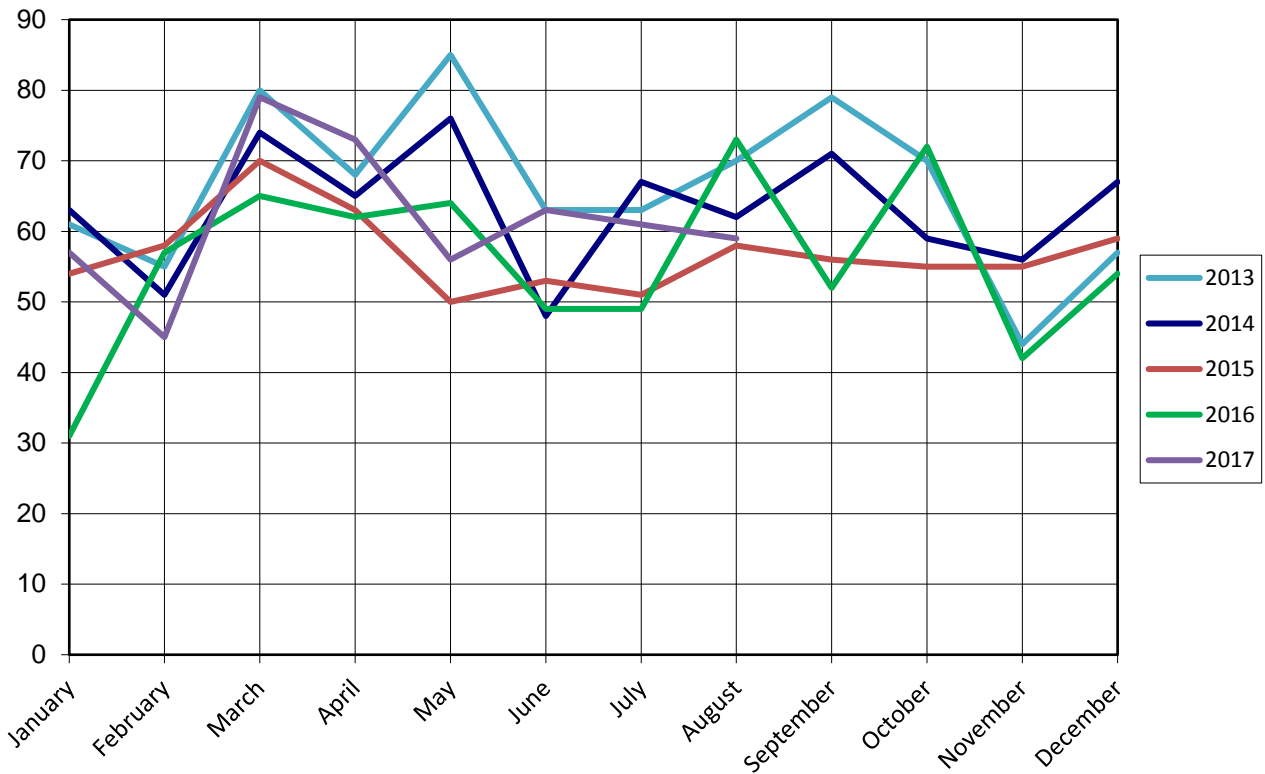
Report on Bankruptcy Case Filings August 2017

	Month Total	2017 Total	2016 YTD Total
Ch. 7	39	328	349 (-21)
Ch. 13	20	150	83 (+67)
Ch. 11	0	15	18 (-3)
	59	493	450 (+43)

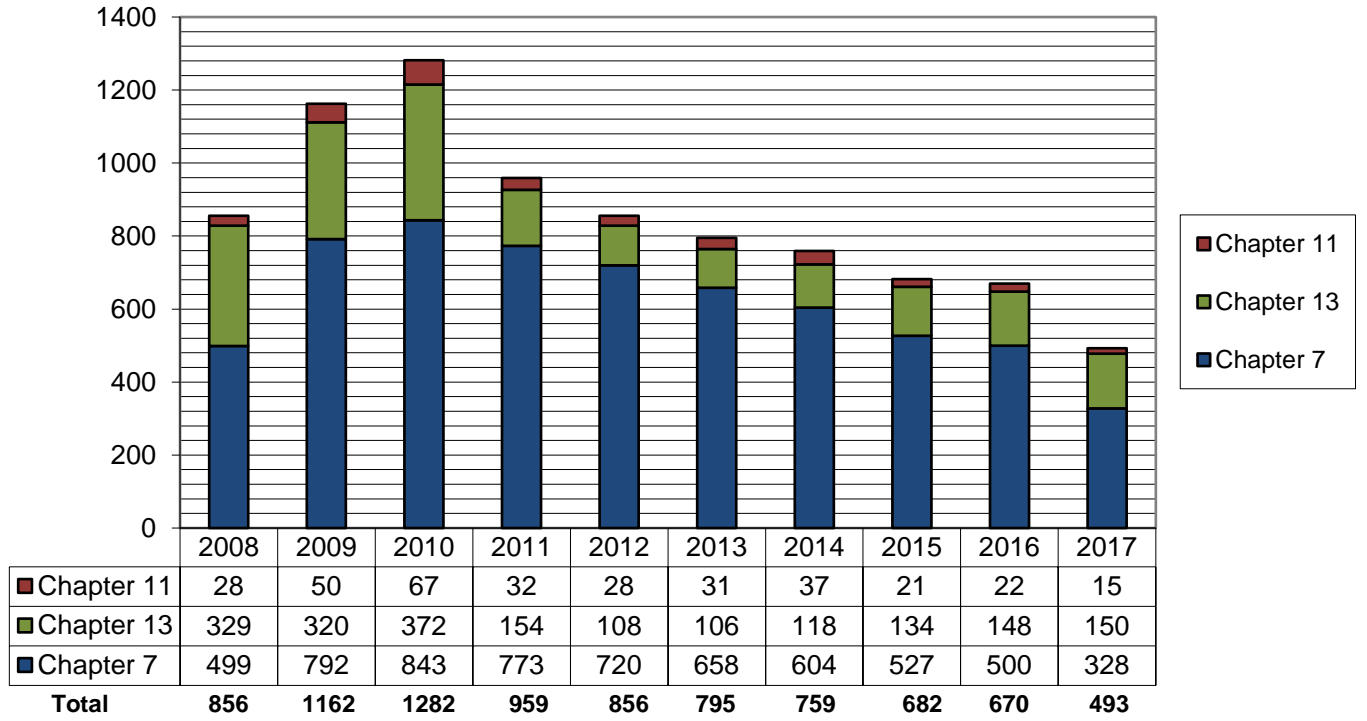
As of August 31, 2017:

- ◆ The projected total of cases for 2017 is **741**
- ◆ Compared to 2016, filings increased by **9.6%**
- ◆ An average of **2.0** cases were filed each day

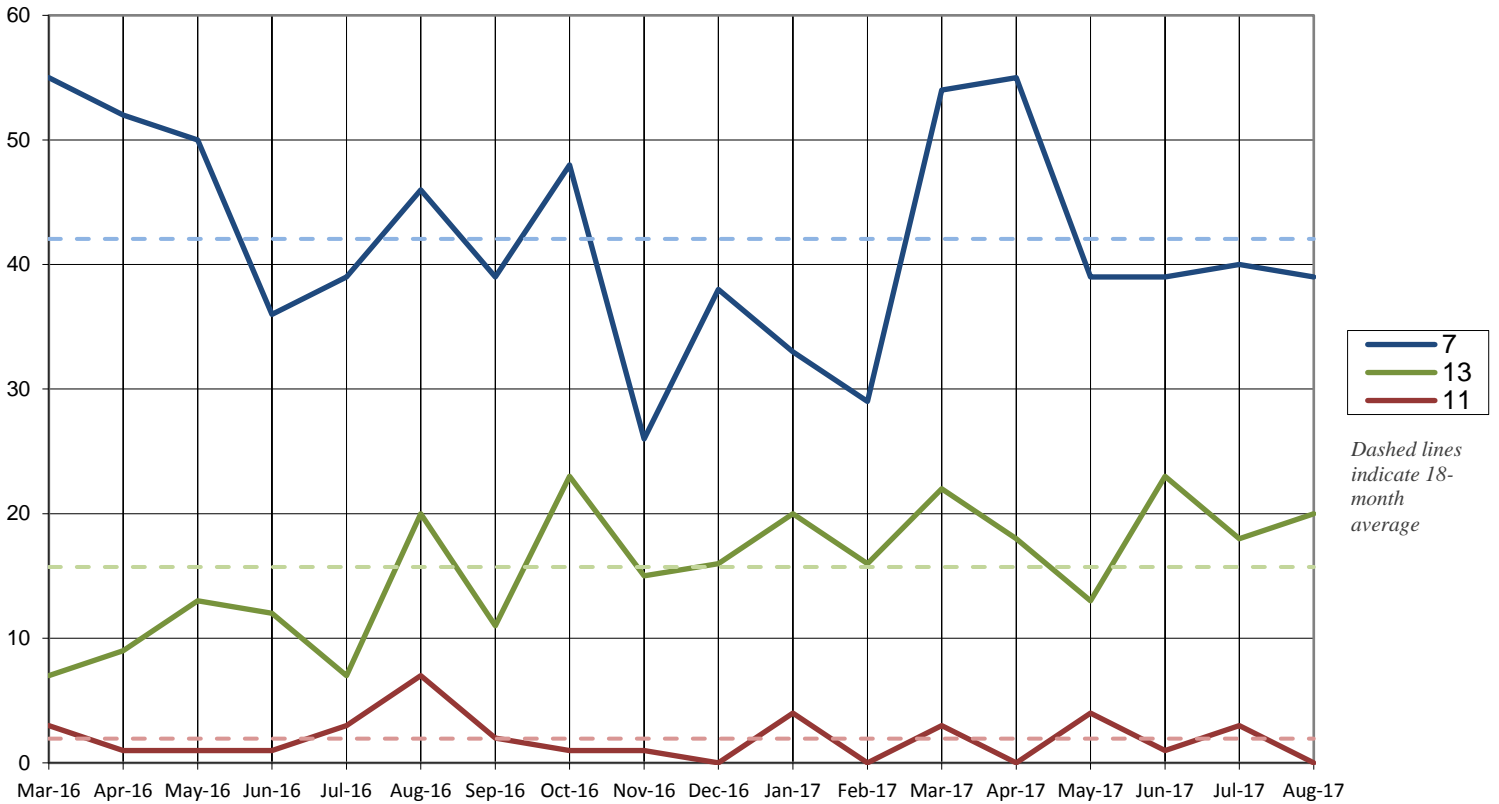
Cases Filed per Month by Year



Total Cases Filed per Year

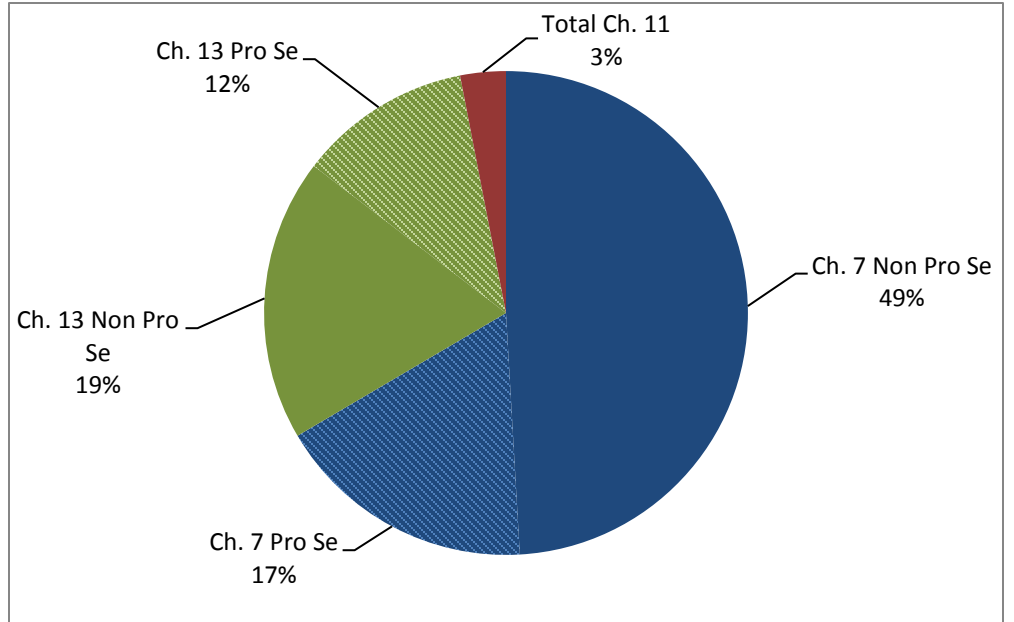


Cases Filed Per Month by Chapter - 18 months



Pro Se Filings 2017

	Total	Pro Se
Ch. 7	328	86
Ch. 13	150	57
Ch. 11	15	3



United States Bankruptcy Court for the District of Columbia

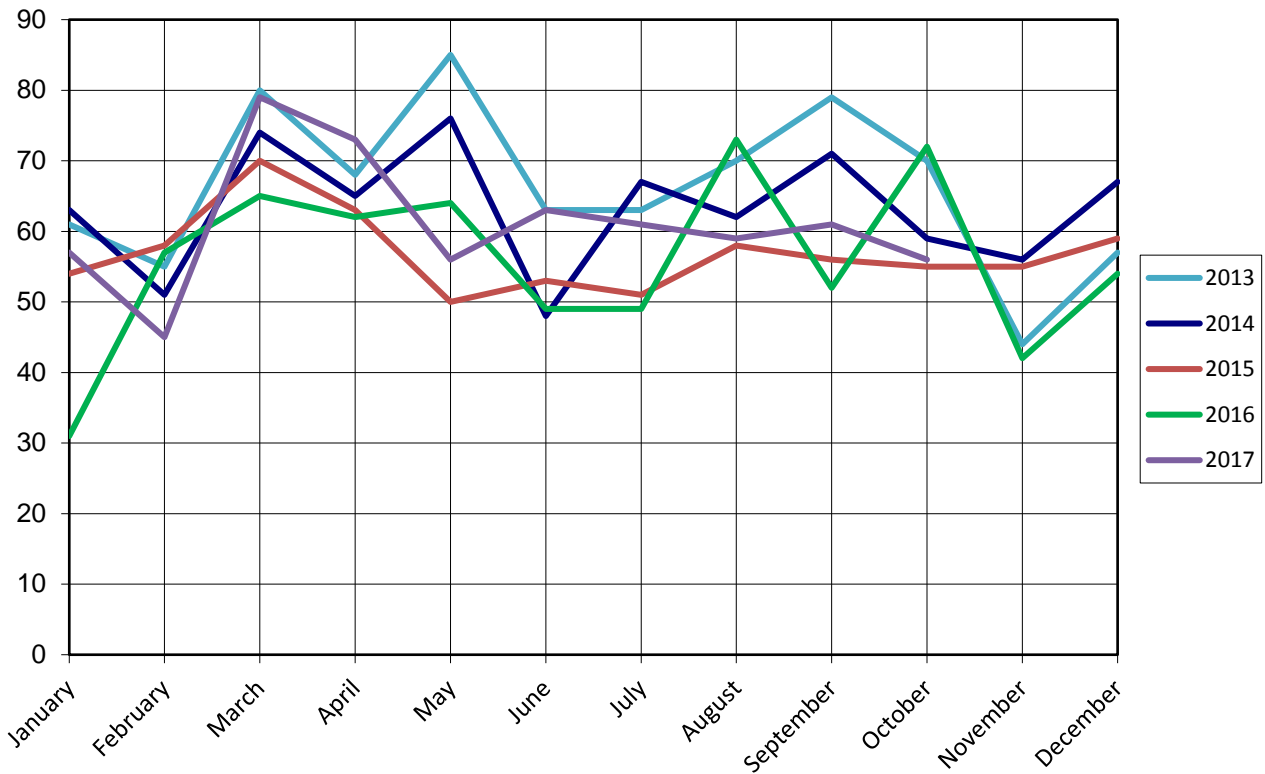
Report on Bankruptcy Case Filings October 2017

	Month Total	2017 Total	2016 YTD Total
Ch. 7	41	406	436 (-30)
Ch. 13	13	183	117 (+66)
Ch. 11	2	21	21
	56	610	574 (+36)

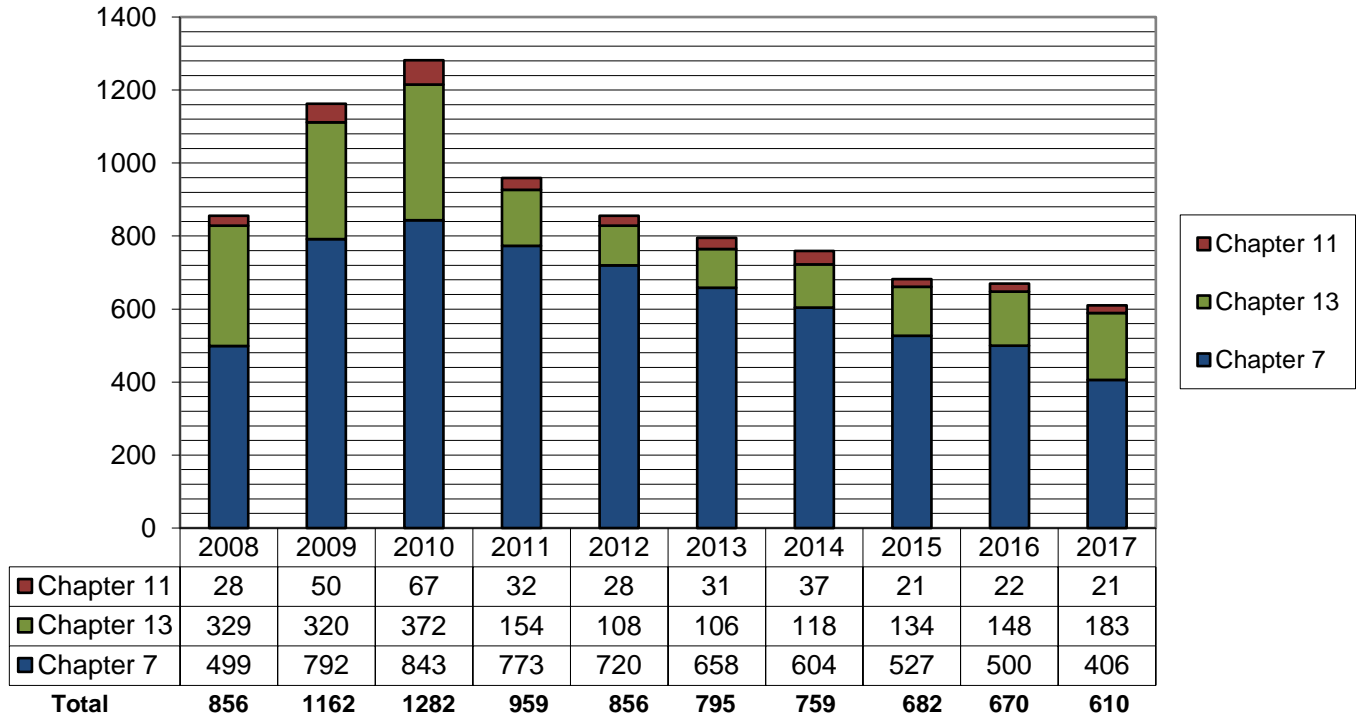
As of October 31, 2017:

- ◆ The projected total of cases for 2017 is **732**
- ◆ Compared to 2016, filings increased by **6.3%**
- ◆ An average of **2.0** cases were filed each day

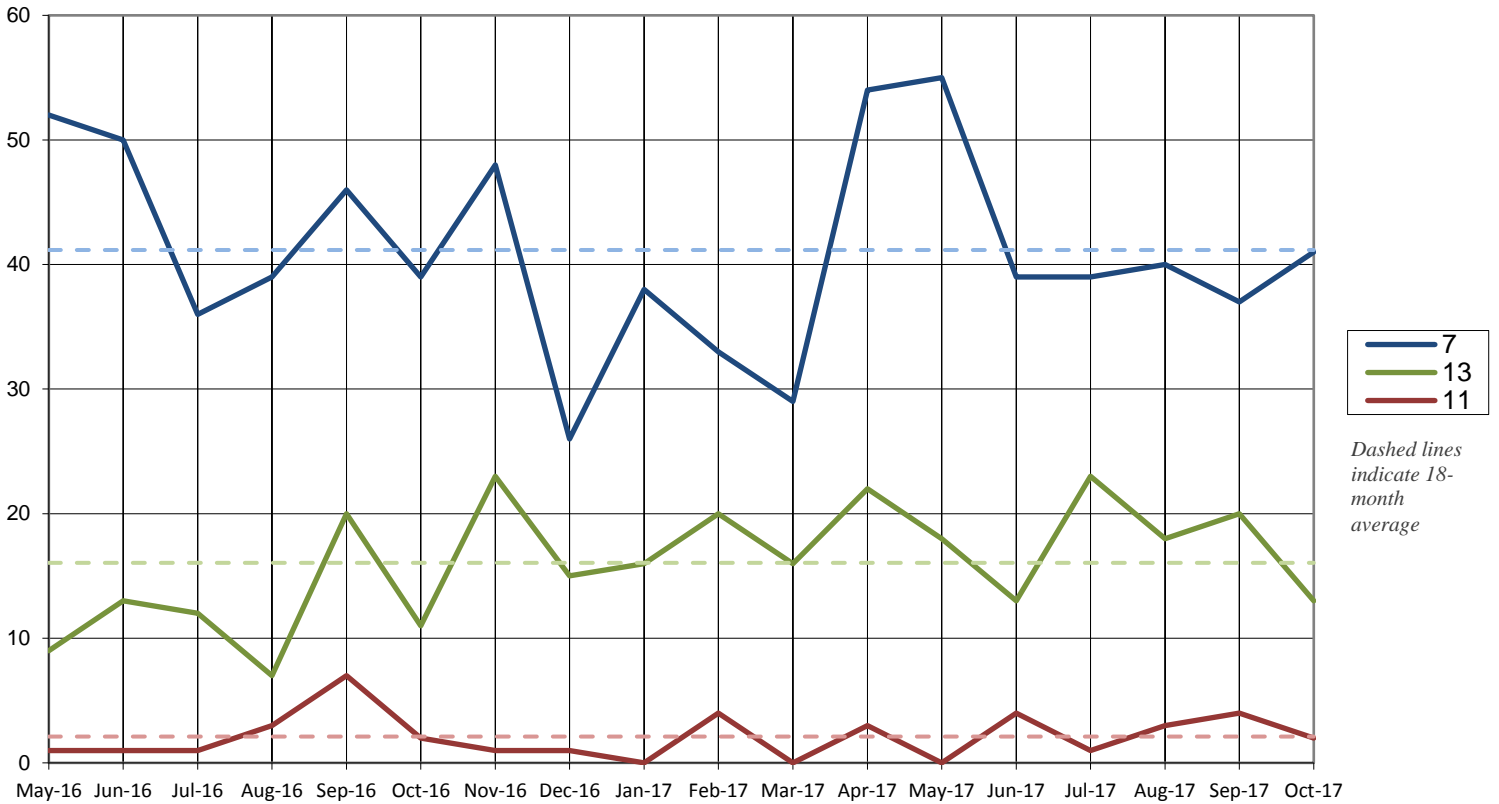
Cases Filed per Month by Year



Total Cases Filed per Year

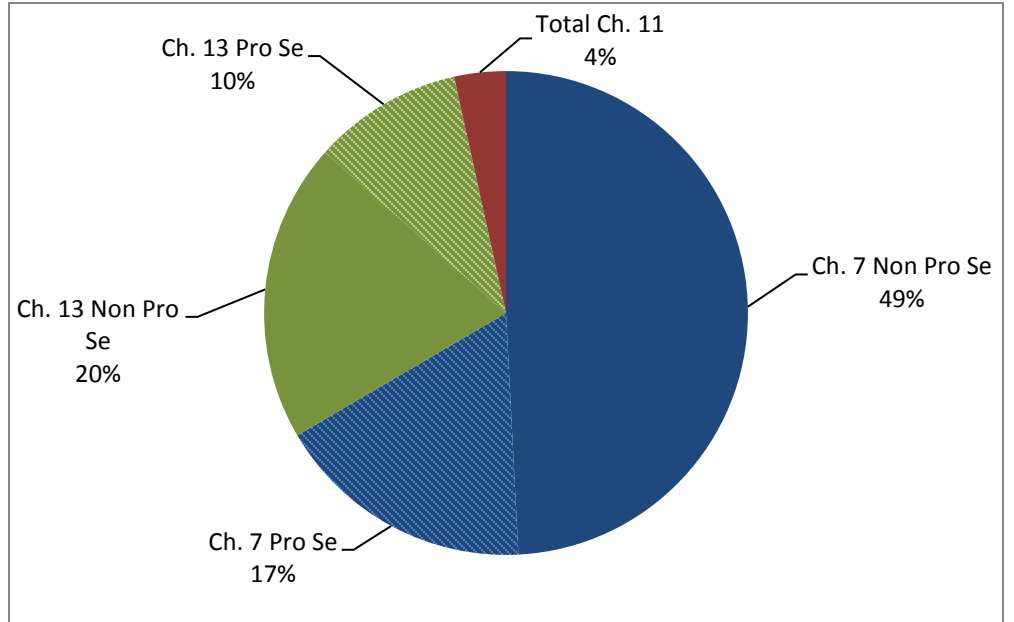


Cases Filed Per Month by Chapter - 18 months



Pro Se Filings 2017

	Total	Pro Se
Ch. 7	406	106
Ch. 13	183	61
Ch. 11	21	4



United States Bankruptcy Court for the District of Columbia

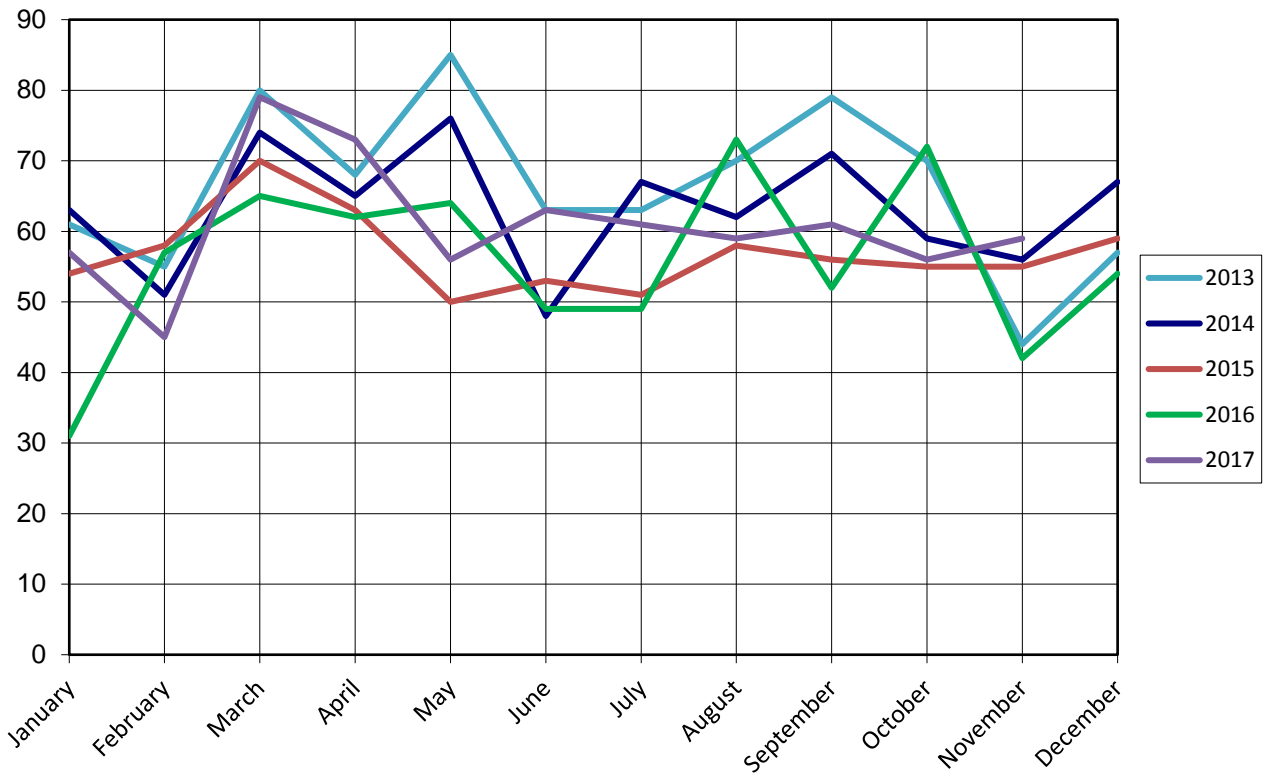
Report on Bankruptcy Case Filings November 2017

	Month Total	2017 Total	2016 YTD Total
Ch. 7	38	444	462 (-18)
Ch. 13	18	201	132 (+69)
Ch. 11	3	24	22 (+2)
	59	669	616 (+53)

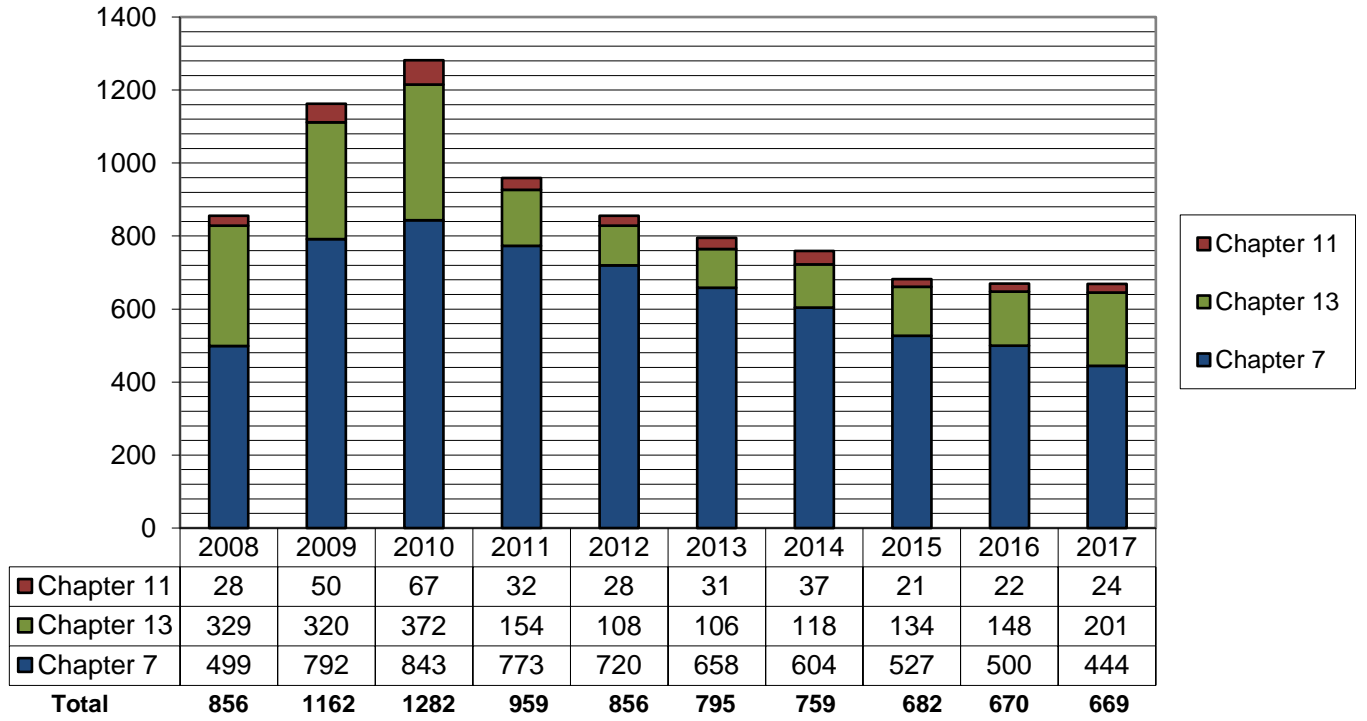
As of November 30, 2017:

- ◆ The projected total of cases for 2017 is **731**
- ◆ Compared to 2016, filings increased by **8.6%**
- ◆ An average of **2.0** cases were filed each day

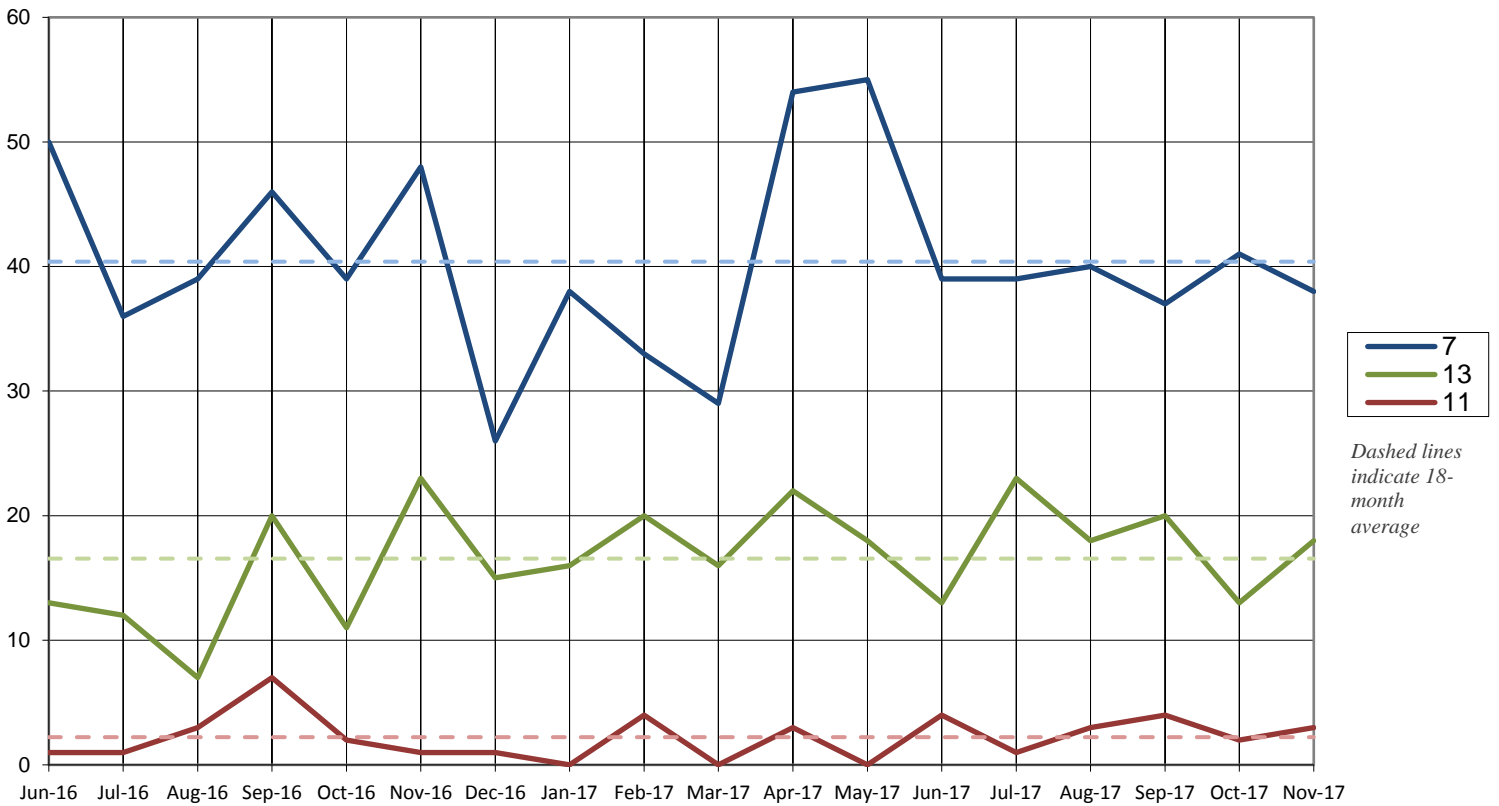
Cases Filed per Month by Year



Total Cases Filed per Year

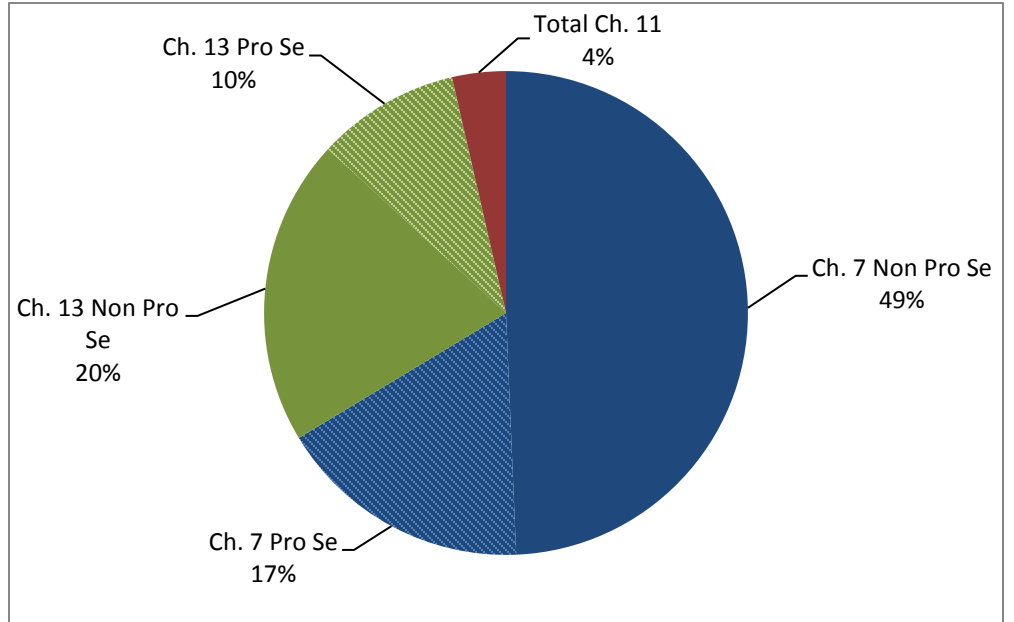


Cases Filed Per Month by Chapter - 18 months



Pro Se Filings 2017

	Total	Pro Se
Ch. 7	444	114
Ch. 13	201	64
Ch. 11	24	5



United States Bankruptcy Court for the District of Columbia

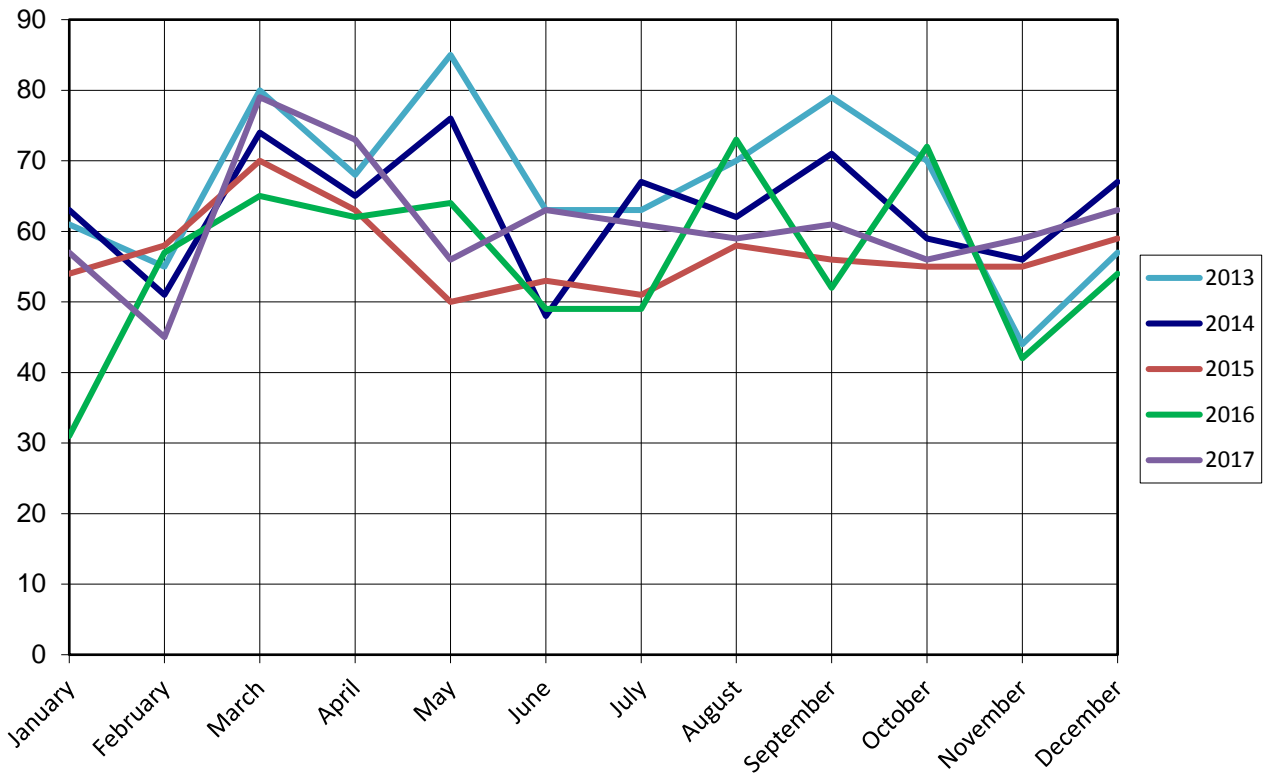
Report on Bankruptcy Case Filings December 2017

	Month Total	2017 Total	2016 YTD Total
Ch. 7	35	479	500 (-21)
Ch. 13	24	225	148 (+77)
Ch. 11	4	28	22 (+6)
	63	732	670 (+62)

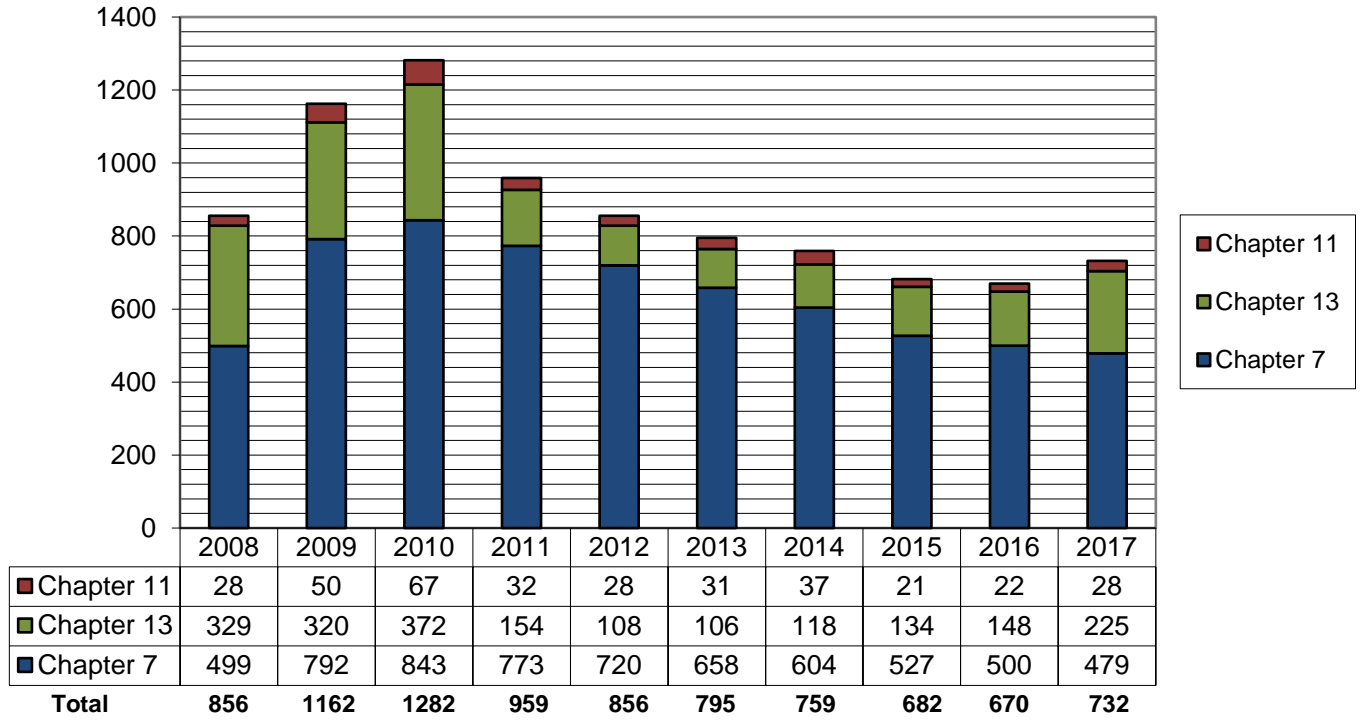
As of December 31, 2017:

- ◆ The total of cases for 2017 is **732**
- ◆ Compared to 2016, filings increased by **9.3%**
- ◆ An average of **2.0** cases were filed each day

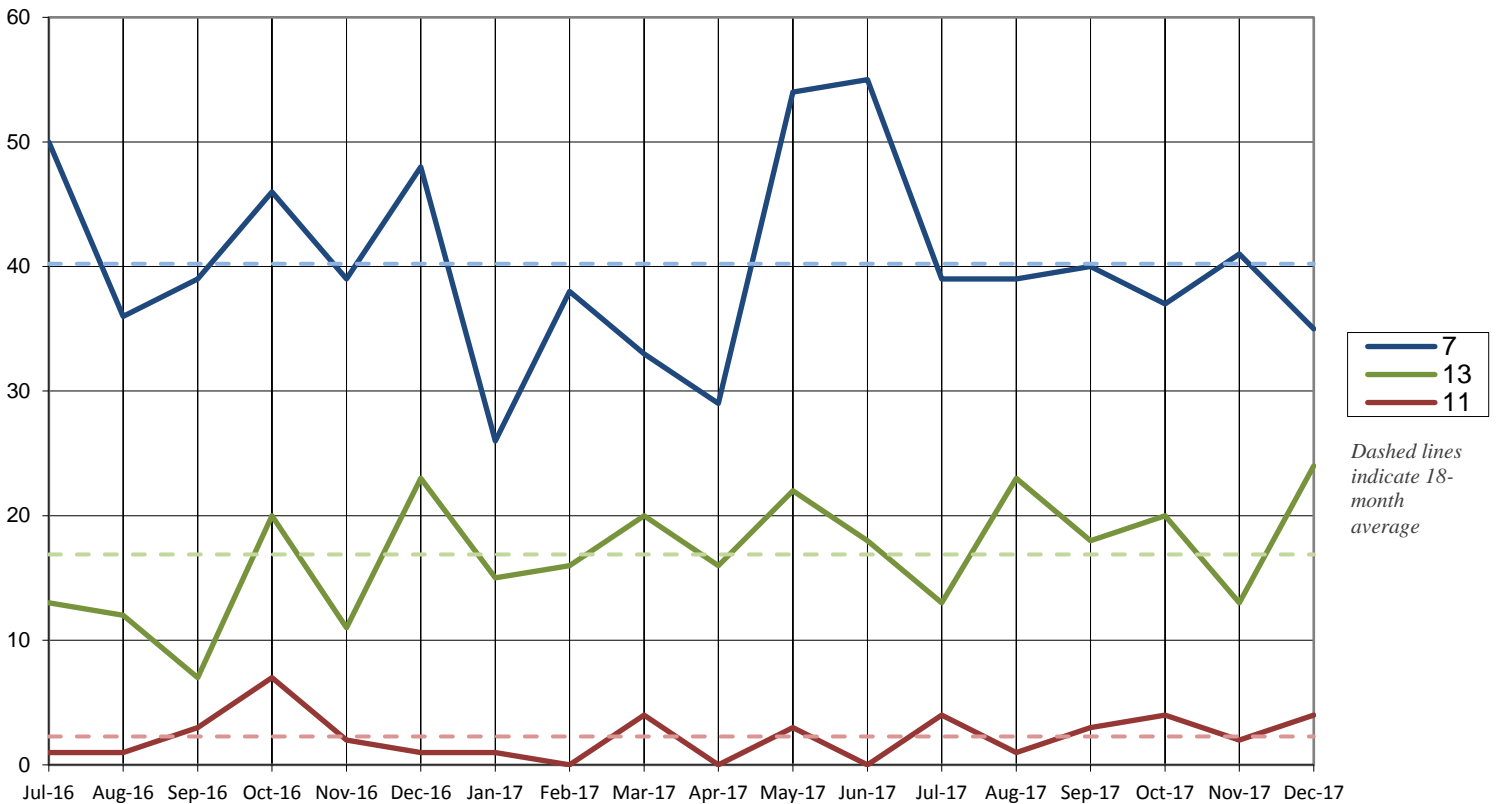
Cases Filed per Month by Year



Total Cases Filed per Year



Cases Filed Per Month by Chapter - 18 months



Pro Se Filings 2017

	Total	Pro Se
Ch. 7	479	124
Ch. 13	225	71
Ch. 11	28	5

