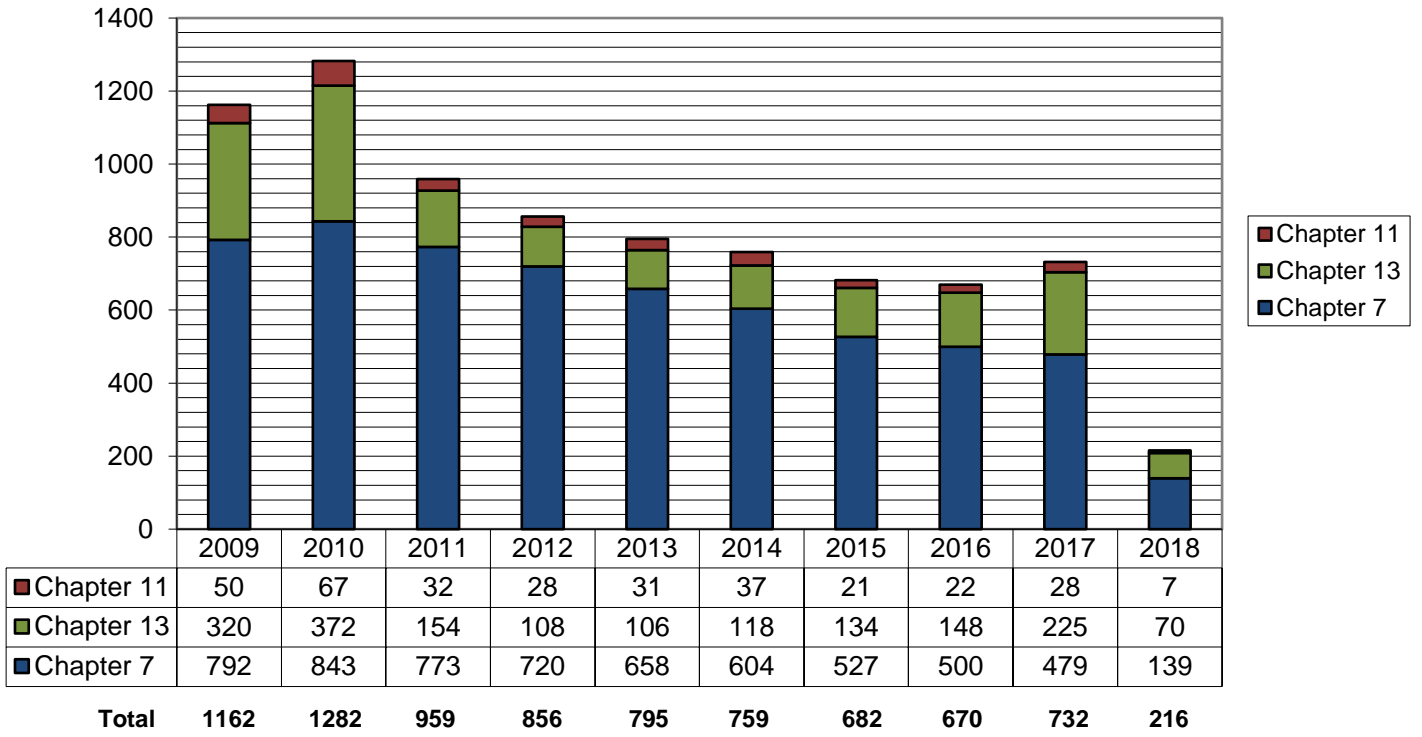
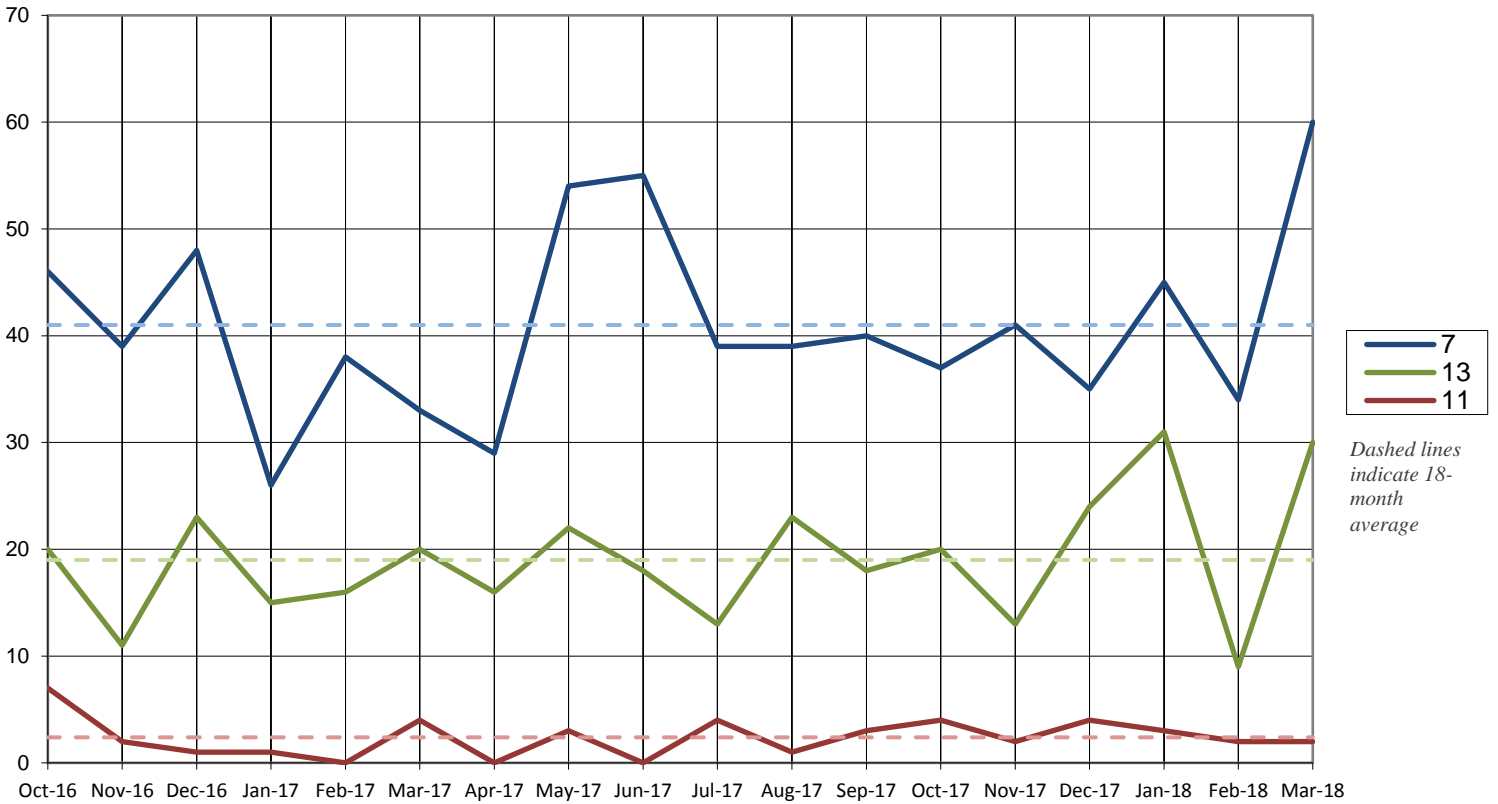


Total Cases Filed per Year

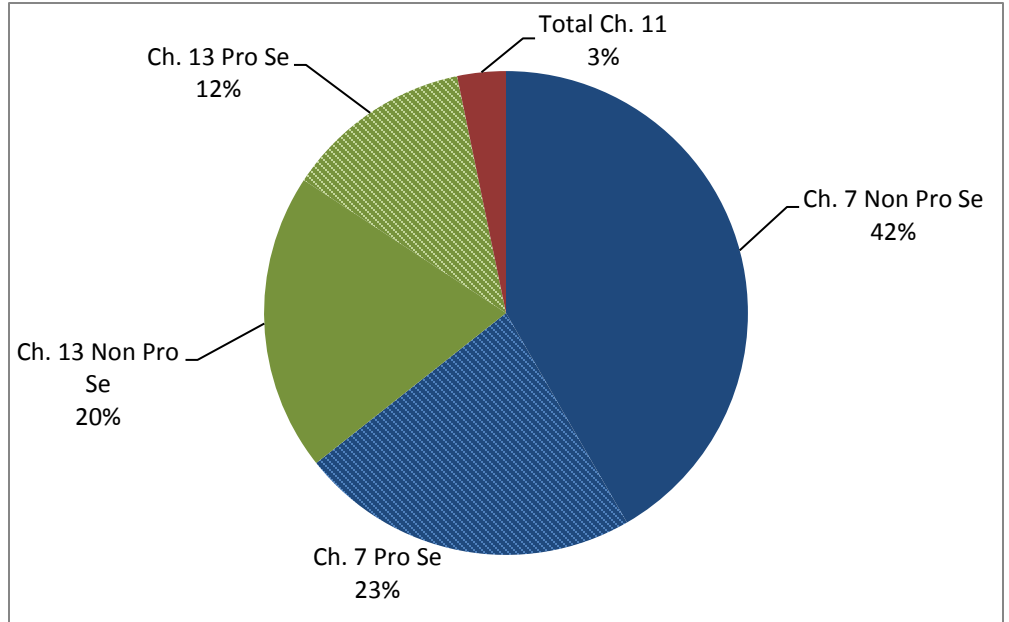


Cases Filed Per Month by Chapter - 18 months

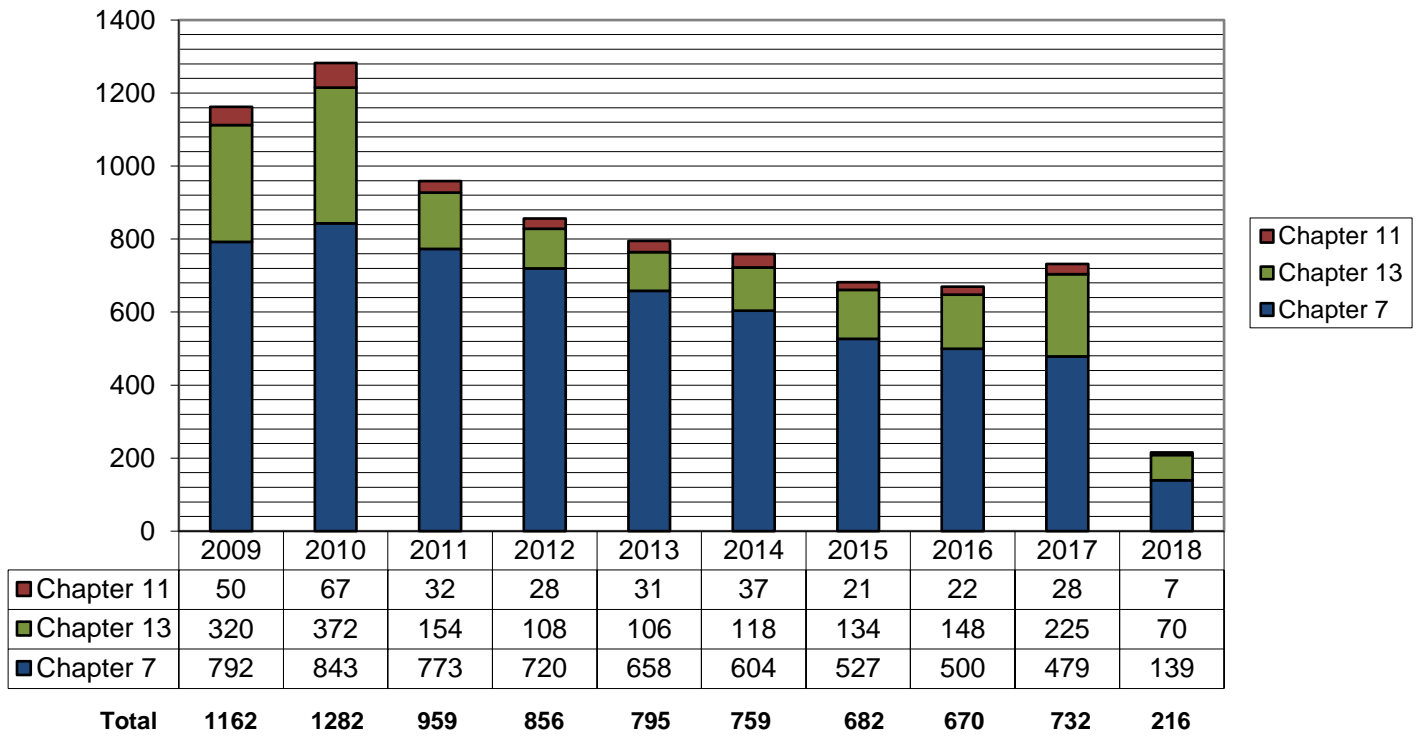


Pro Se Filings 2018

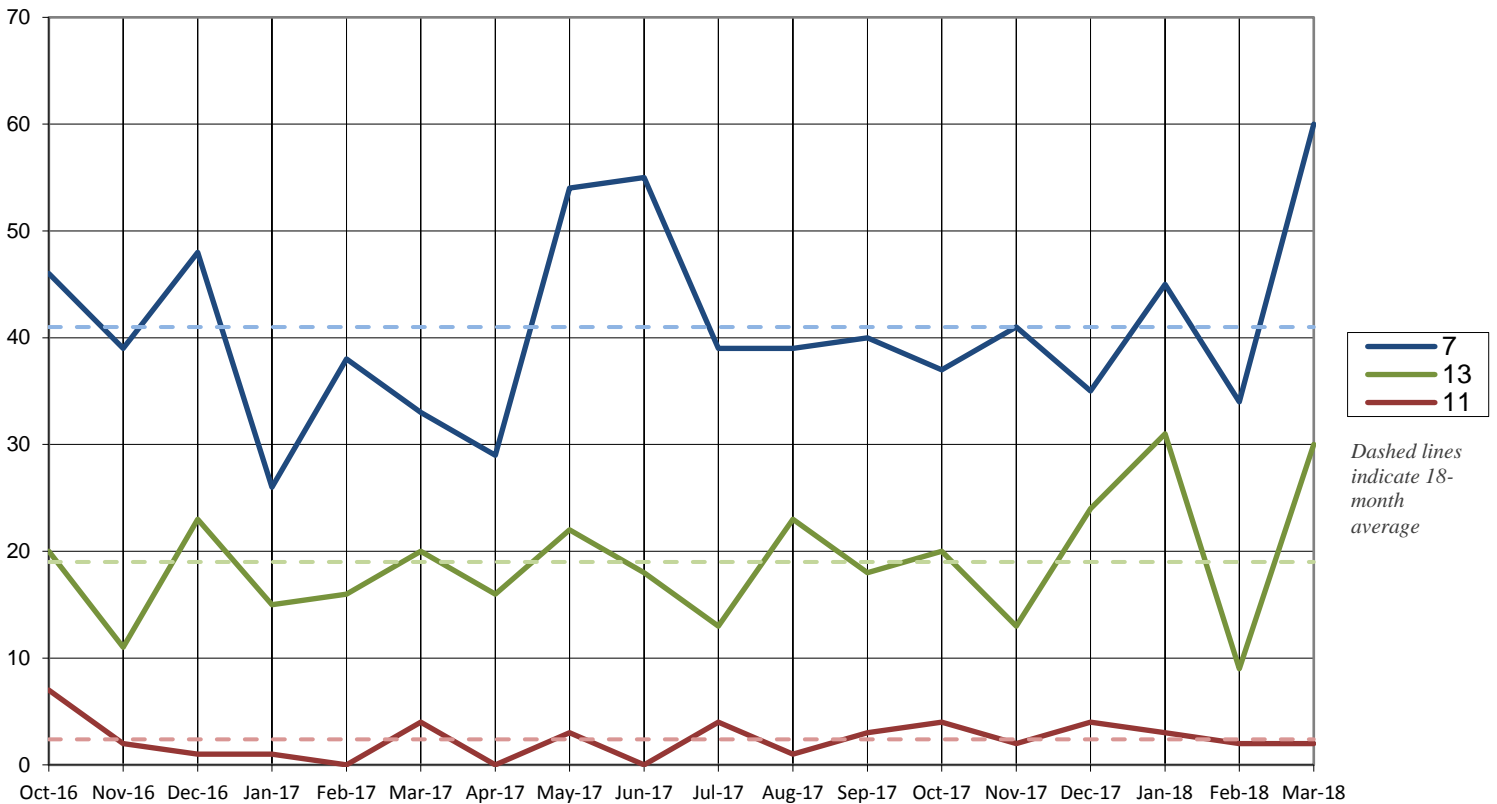
| | Total | Pro Se |
|--------|-------|--------|
| Ch. 7 | 139 | 49 |
| Ch. 13 | 70 | 27 |
| Ch. 11 | 7 | 2 |



Total Cases Filed per Year

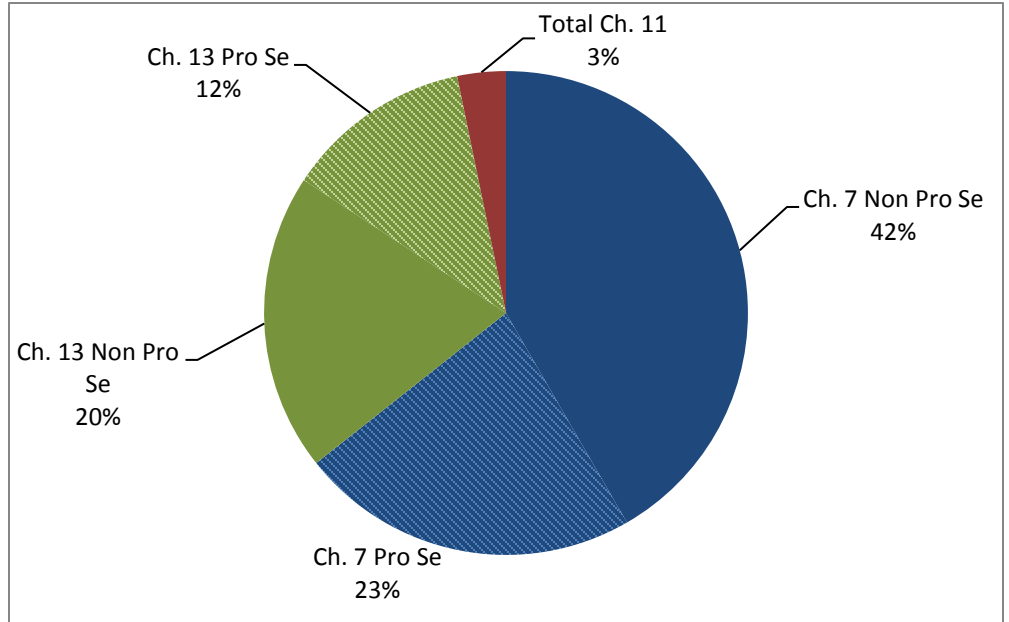


Cases Filed Per Month by Chapter - 18 months

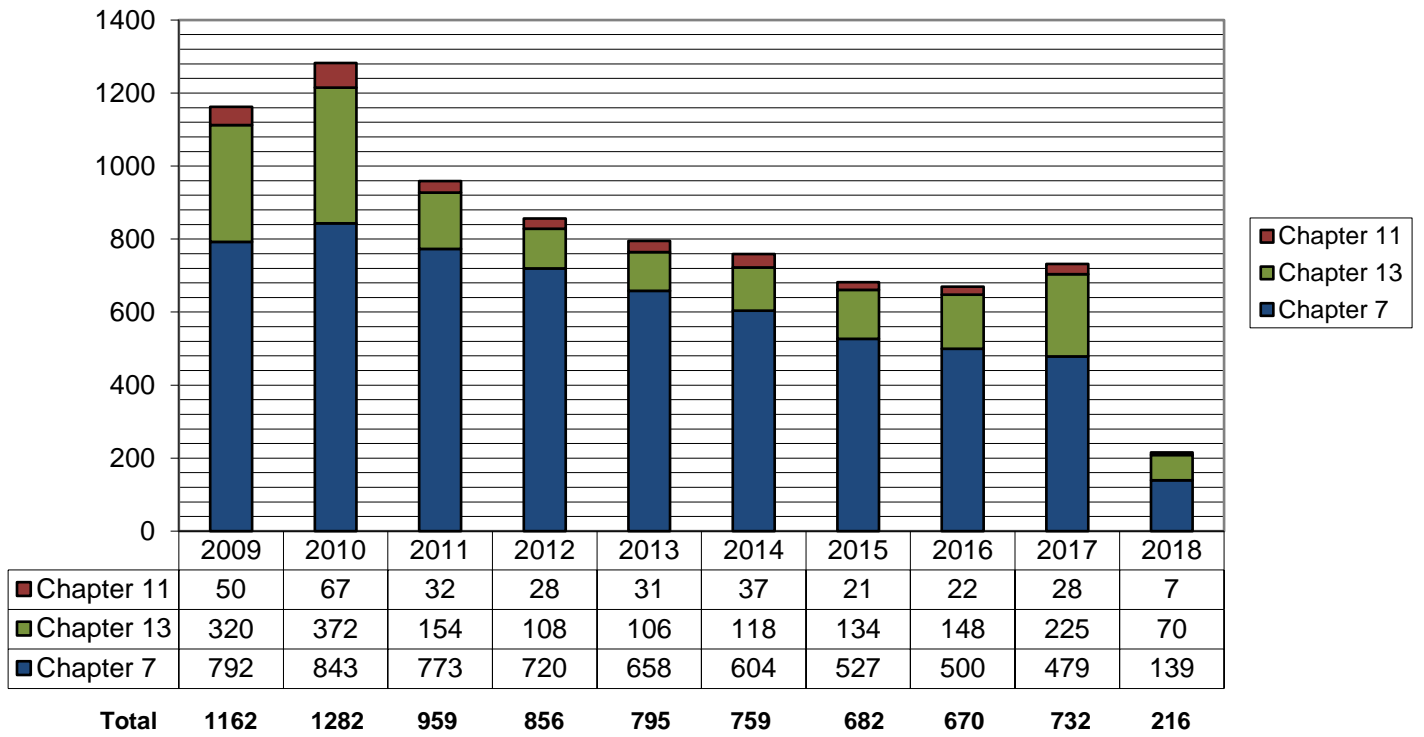


Pro Se Filings 2018

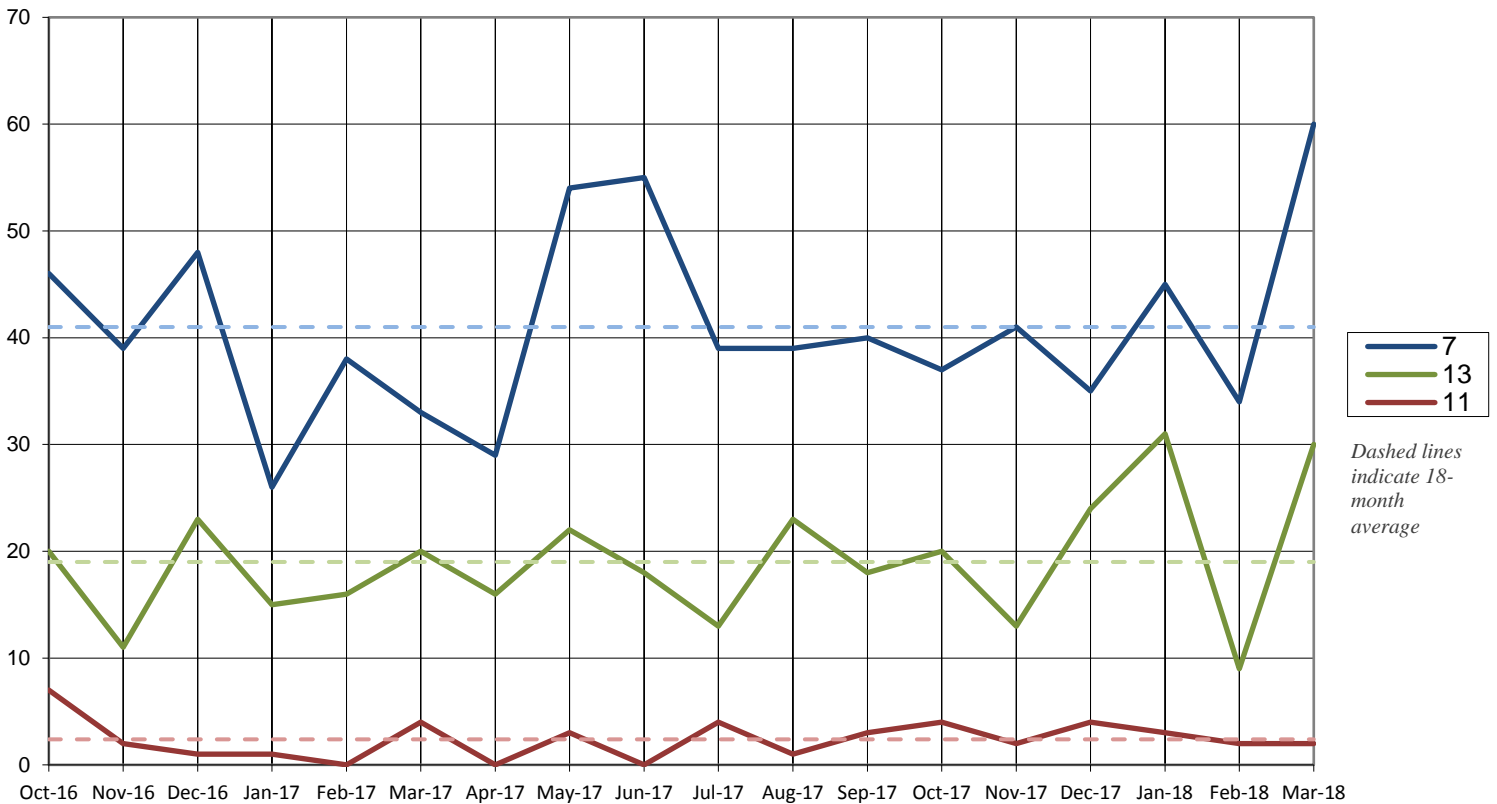
| | Total | Pro Se |
|--------|-------|--------|
| Ch. 7 | 139 | 49 |
| Ch. 13 | 70 | 27 |
| Ch. 11 | 7 | 2 |



Total Cases Filed per Year

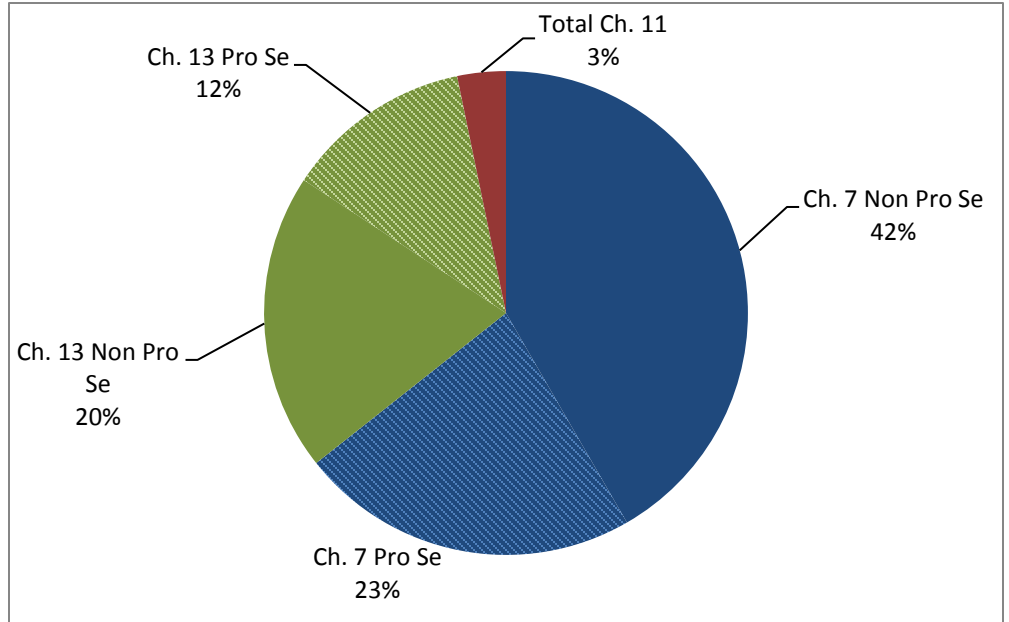


Cases Filed Per Month by Chapter - 18 months

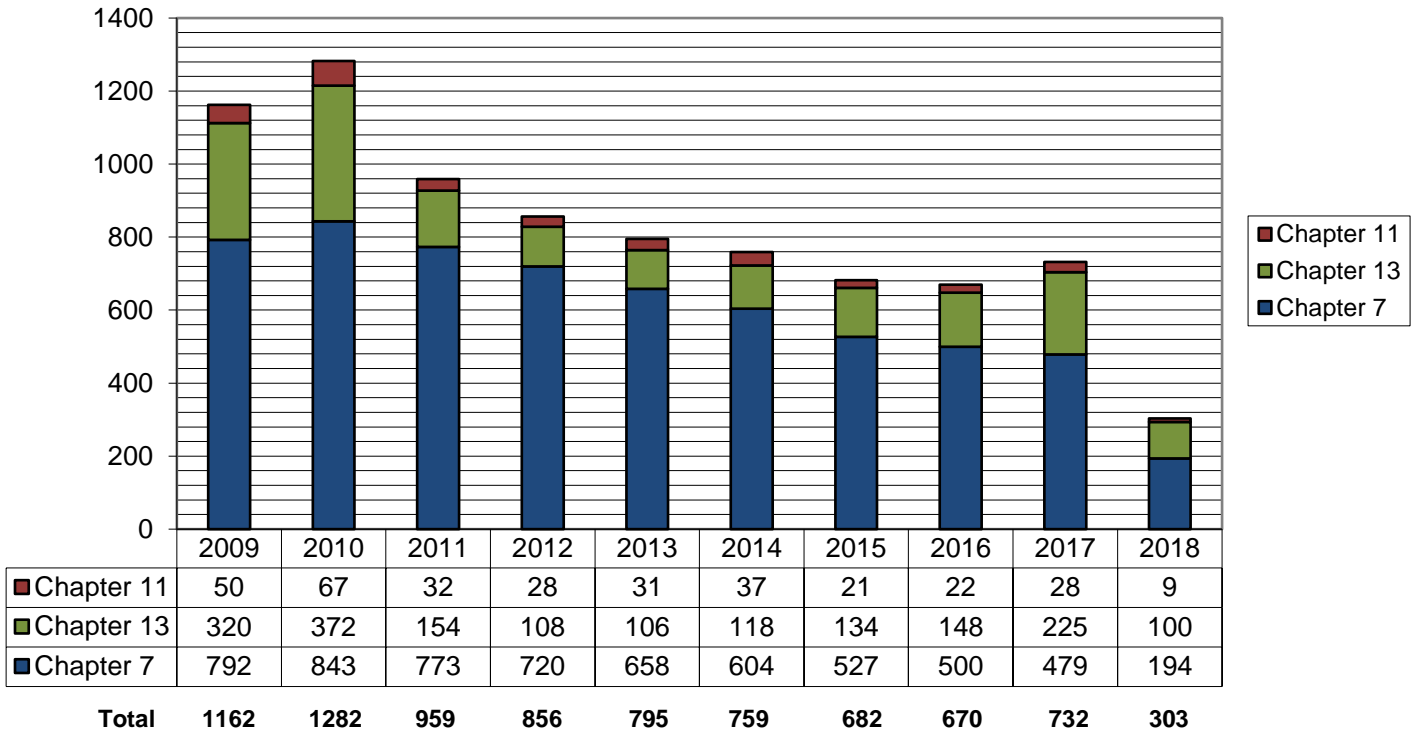


Pro Se Filings 2018

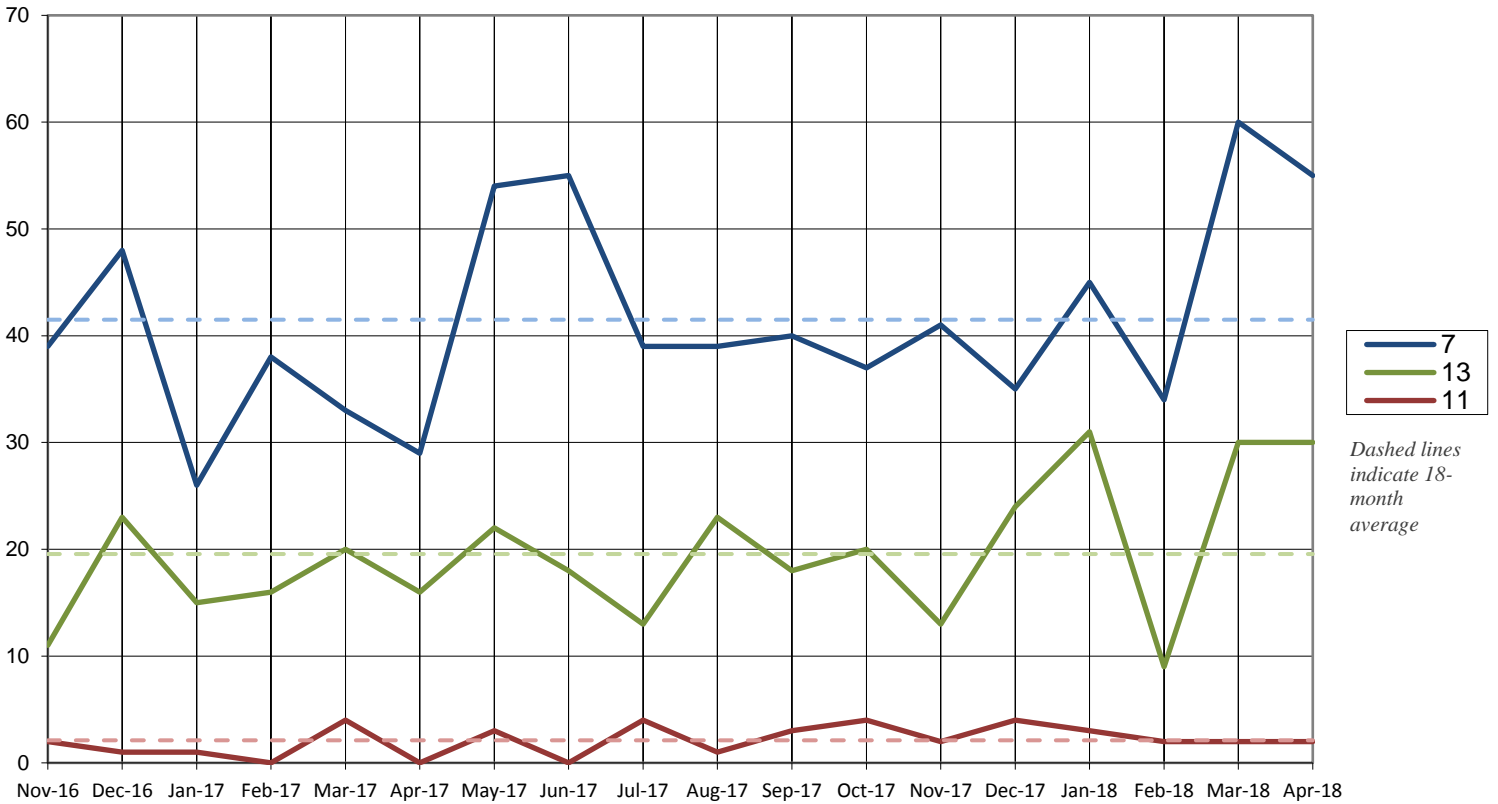
| | Total | Pro Se |
|--------|-------|--------|
| Ch. 7 | 139 | 49 |
| Ch. 13 | 70 | 27 |
| Ch. 11 | 7 | 2 |



Total Cases Filed per Year

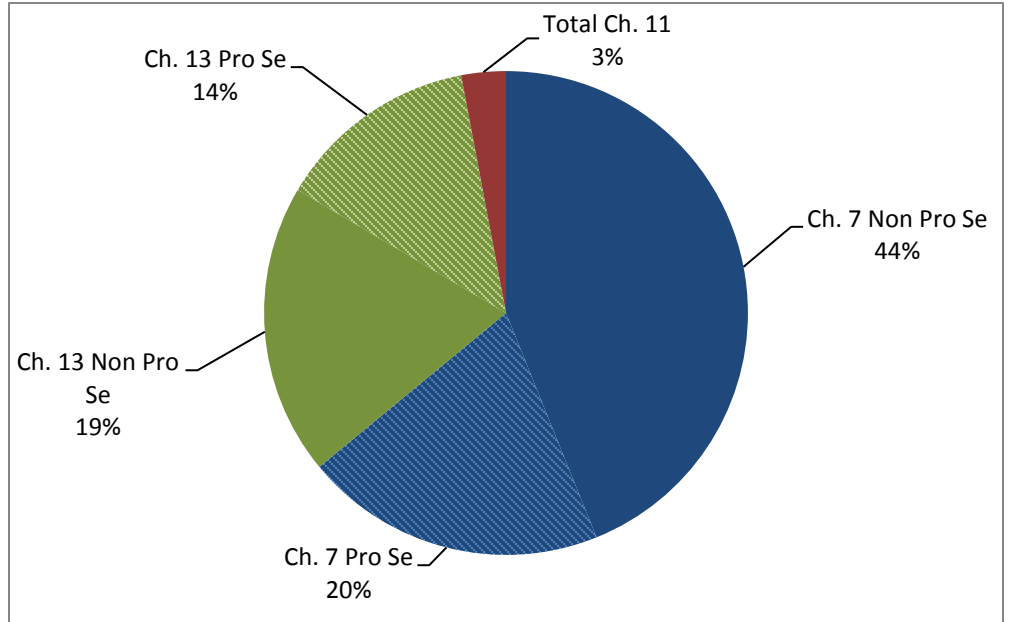


Cases Filed Per Month by Chapter - 18 months



Pro Se Filings 2018

| | Total | Pro Se |
|--------|-------|--------|
| Ch. 7 | 194 | 61 |
| Ch. 13 | 100 | 41 |
| Ch. 11 | 9 | 2 |



United States Bankruptcy Court for the District of Columbia

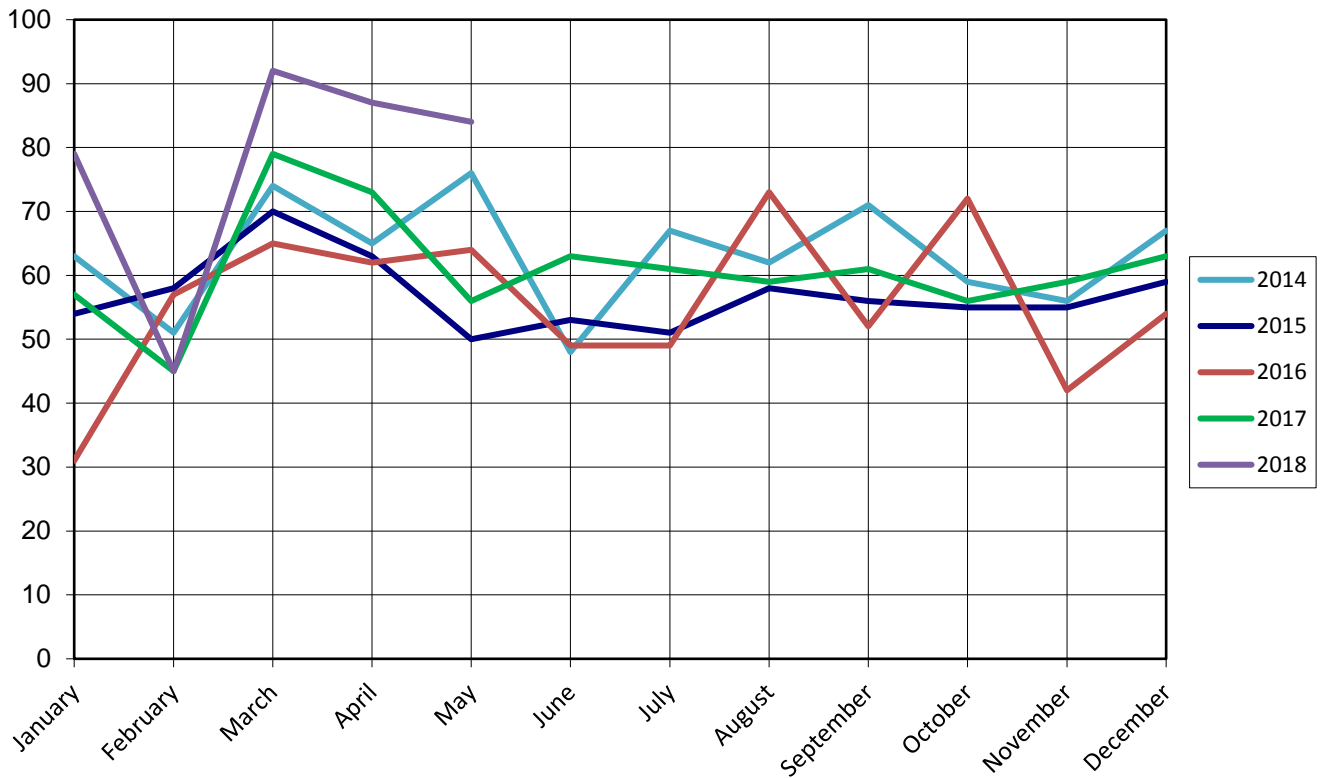
Report on Bankruptcy Case Filings May 2018

| | Month Total | 2018 Total | 2017 YTD Total |
|--------|-------------|------------|----------------|
| Ch. 7 | 52 | 246 | 210 (+36) |
| Ch. 13 | 30 | 130 | 89 (+41) |
| Ch. 11 | 2 | 11 | 11 (+0) |
| | 75 | 387 | 310 (+77) |

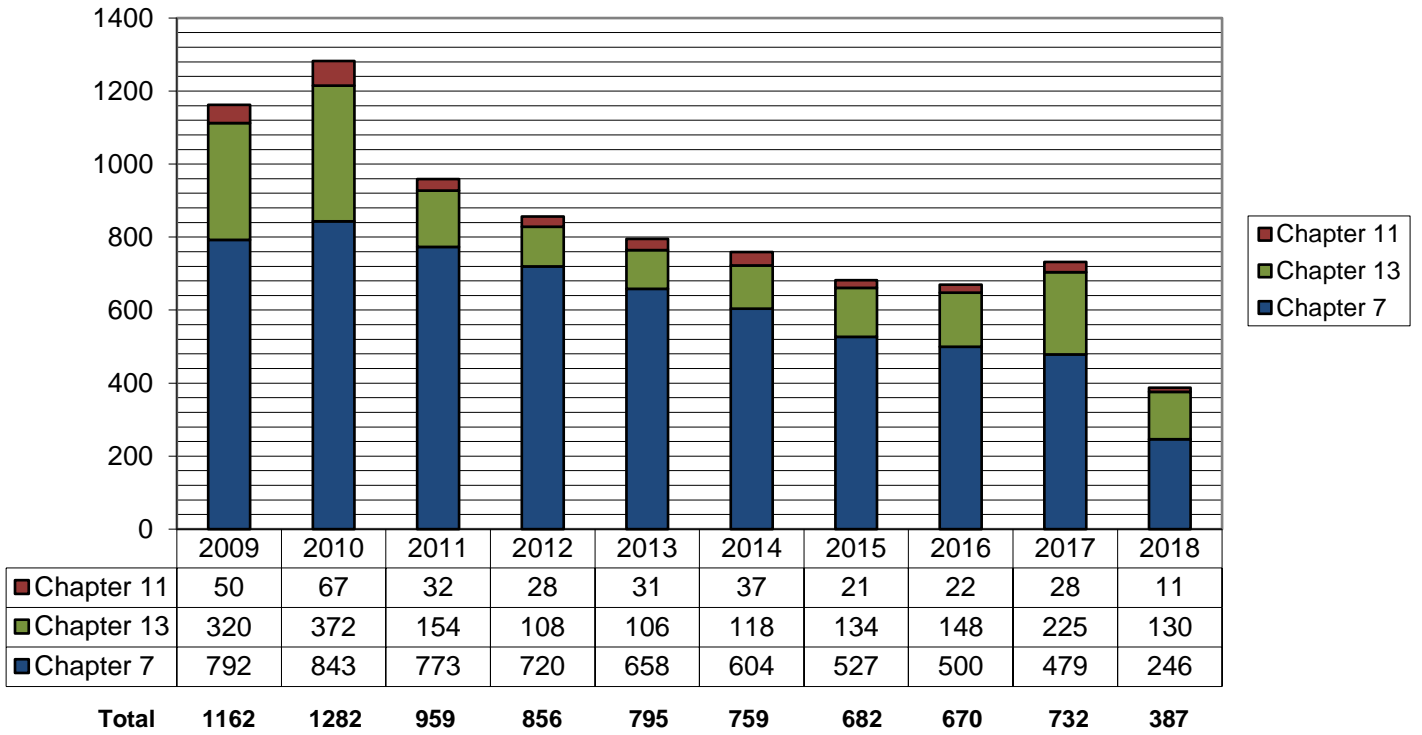
As of May 31, 2018:

- ◆ The projected total of cases for 2018 is **935**
- ◆ Compared to 2017, filings increased by **24.8%**
- ◆ An average of **2.6** cases were filed each day

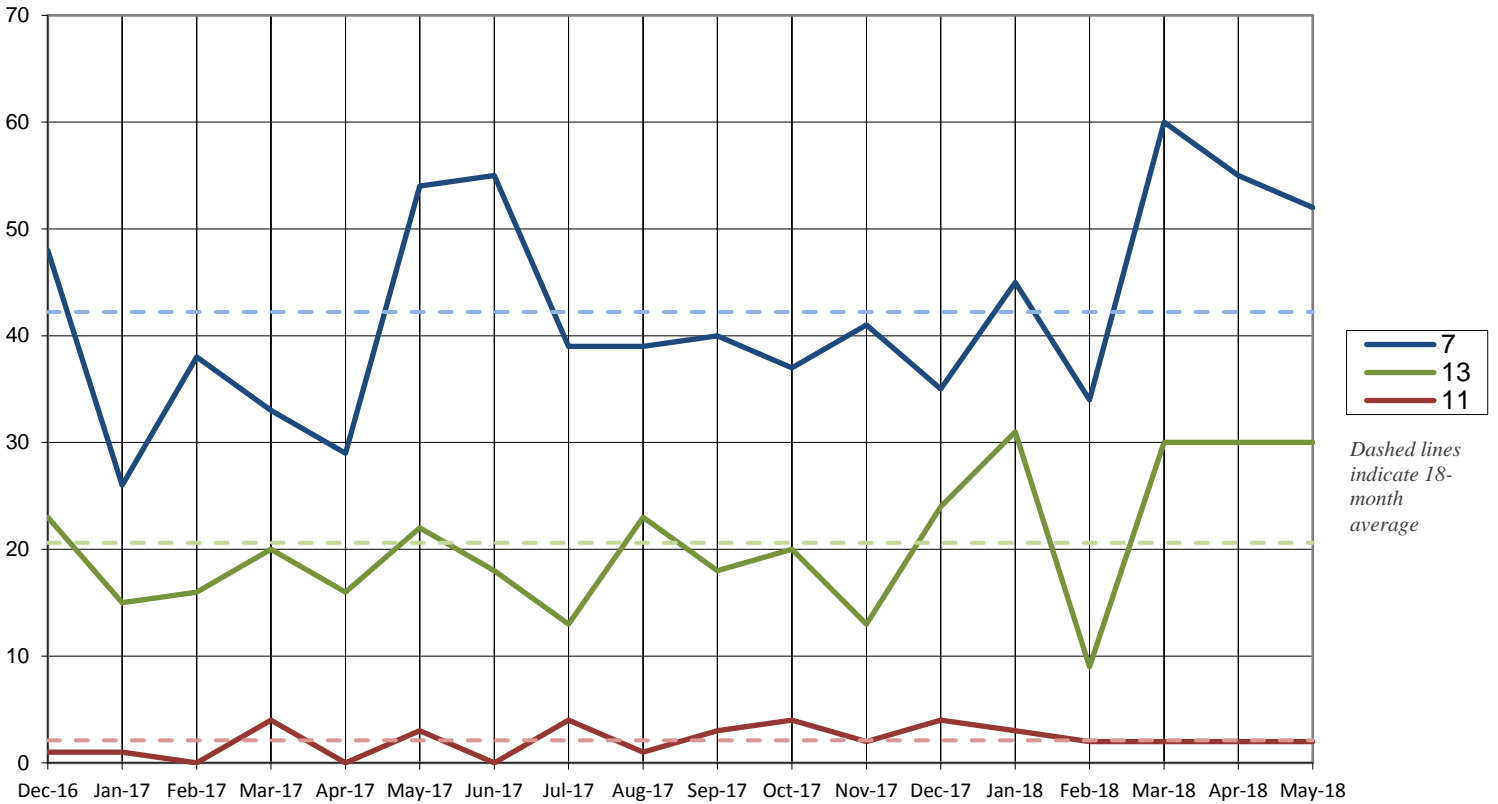
Cases Filed per Month by Year



Total Cases Filed per Year

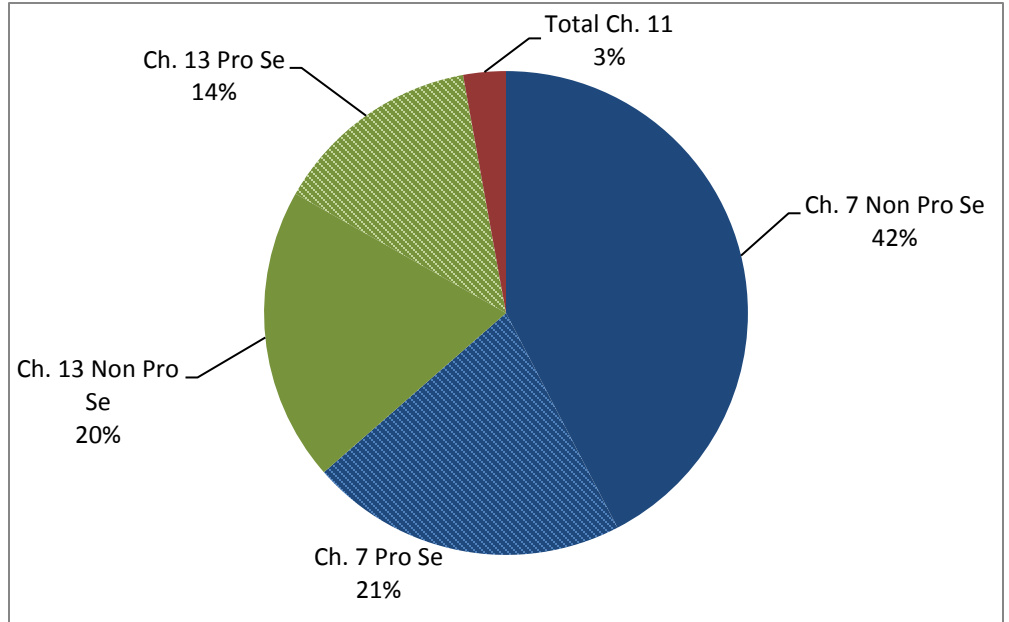


Cases Filed Per Month by Chapter - 18 months



Pro Se Filings 2018

| | Total | Pro Se |
|--------|-------|--------|
| Ch. 7 | 246 | 82 |
| Ch. 13 | 130 | 54 |
| Ch. 11 | 11 | 3 |



United States Bankruptcy Court for the District of Columbia

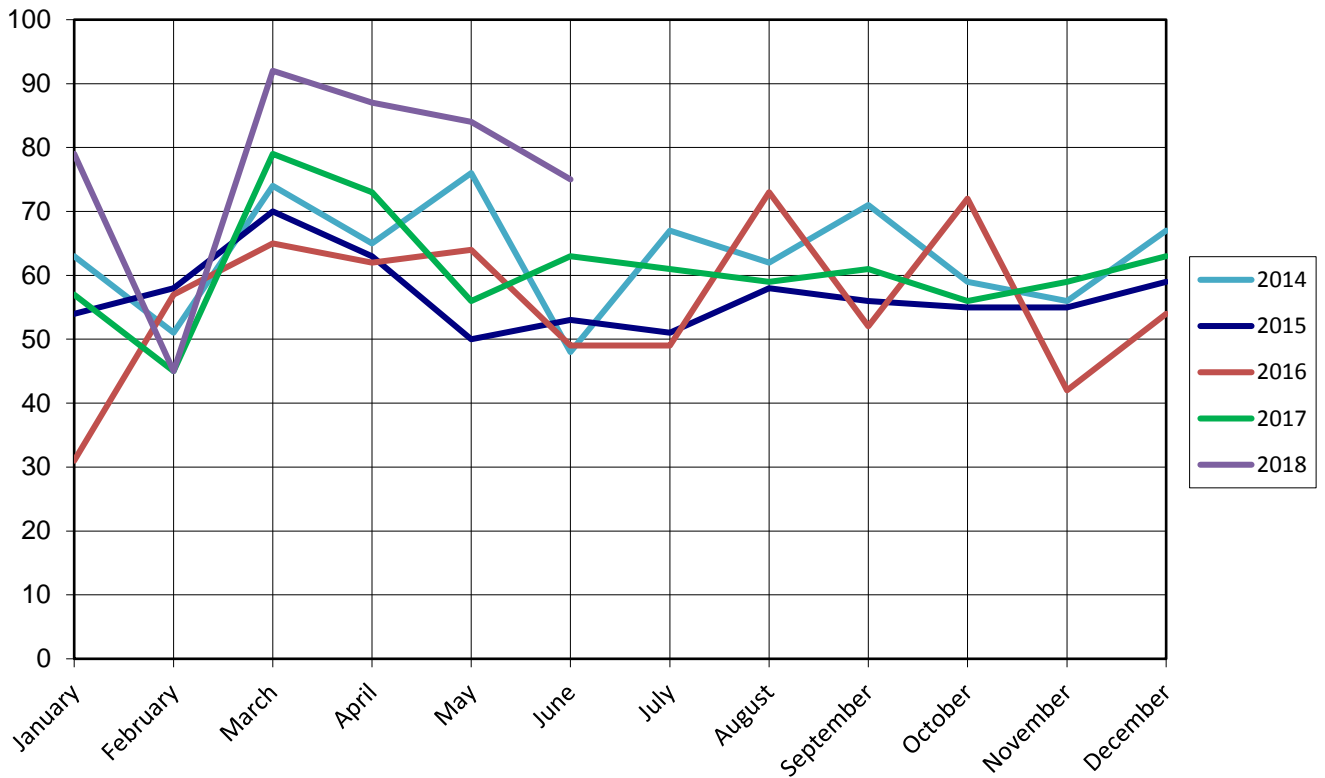
Report on Bankruptcy Case Filings June 2018

| | Month Total | 2018 Total | 2017 YTD Total |
|--------|-------------|------------|----------------|
| Ch. 7 | 47 | 293 | 249 (+44) |
| Ch. 13 | 26 | 156 | 112 (+44) |
| Ch. 11 | 2 | 13 | 12 (+1) |
| | 75 | 462 | 373 (+89) |

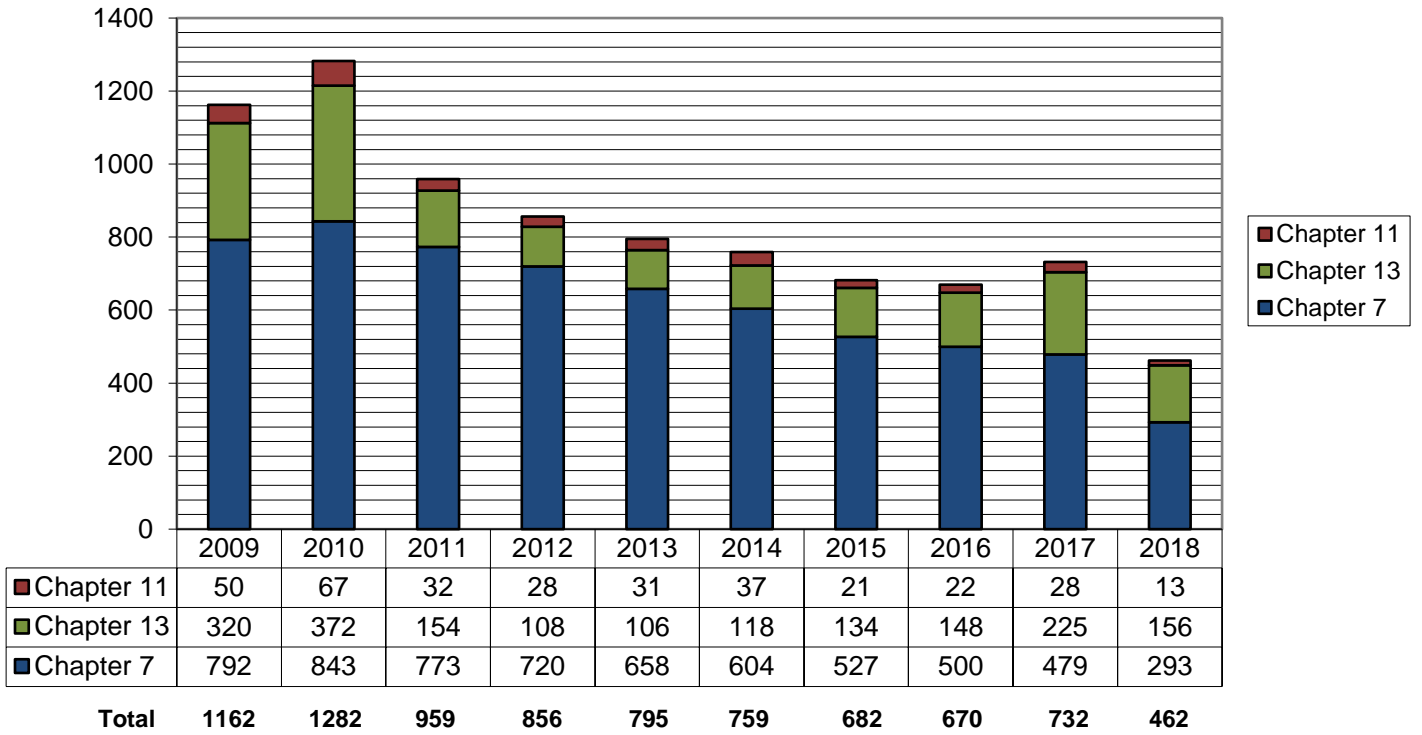
As of June 30, 2018:

- ◆ The projected total of cases for 2018 is **932**
- ◆ Compared to 2017, filings increased by **23.9%**
- ◆ An average of **2.6** cases were filed each day

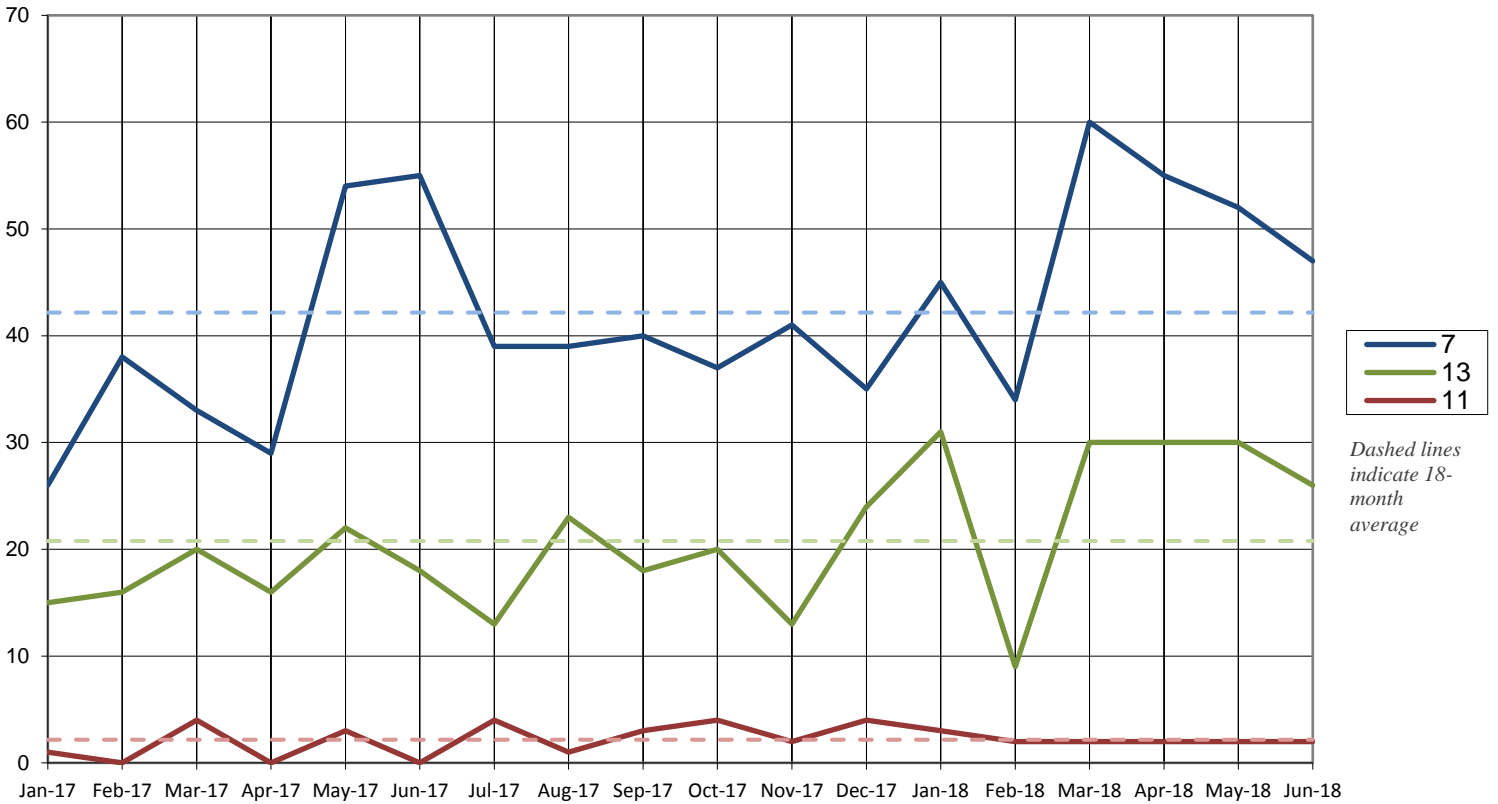
Cases Filed per Month by Year



Total Cases Filed per Year

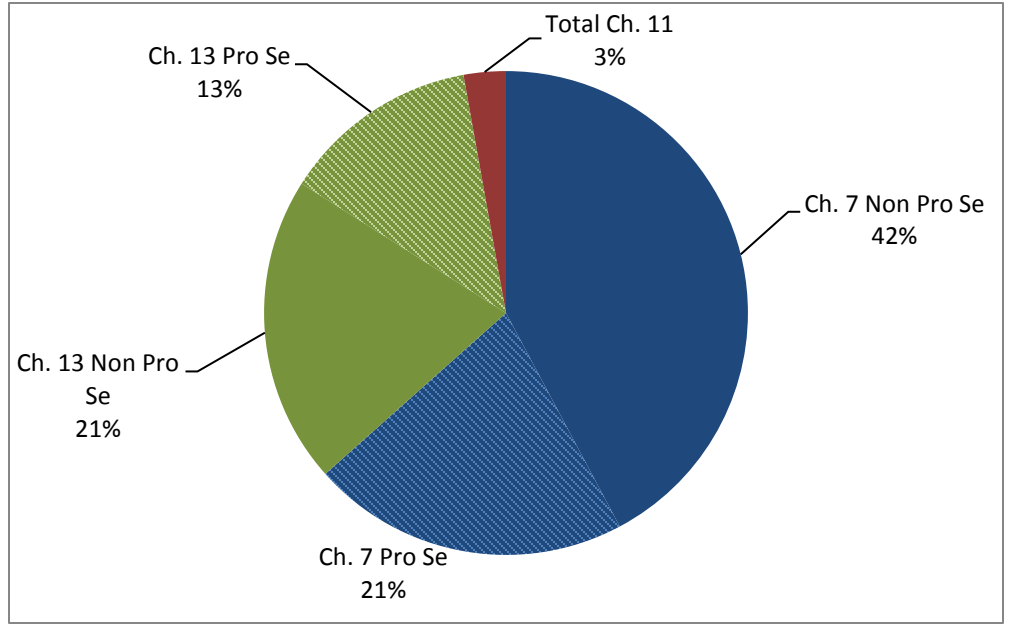


Cases Filed Per Month by Chapter - 18 months



Pro Se Filings 2018

| | Total | Pro Se |
|--------|-------|--------|
| Ch. 7 | 293 | 98 |
| Ch. 13 | 156 | 61 |
| Ch. 11 | 13 | 4 |



United States Bankruptcy Court for the District of Columbia

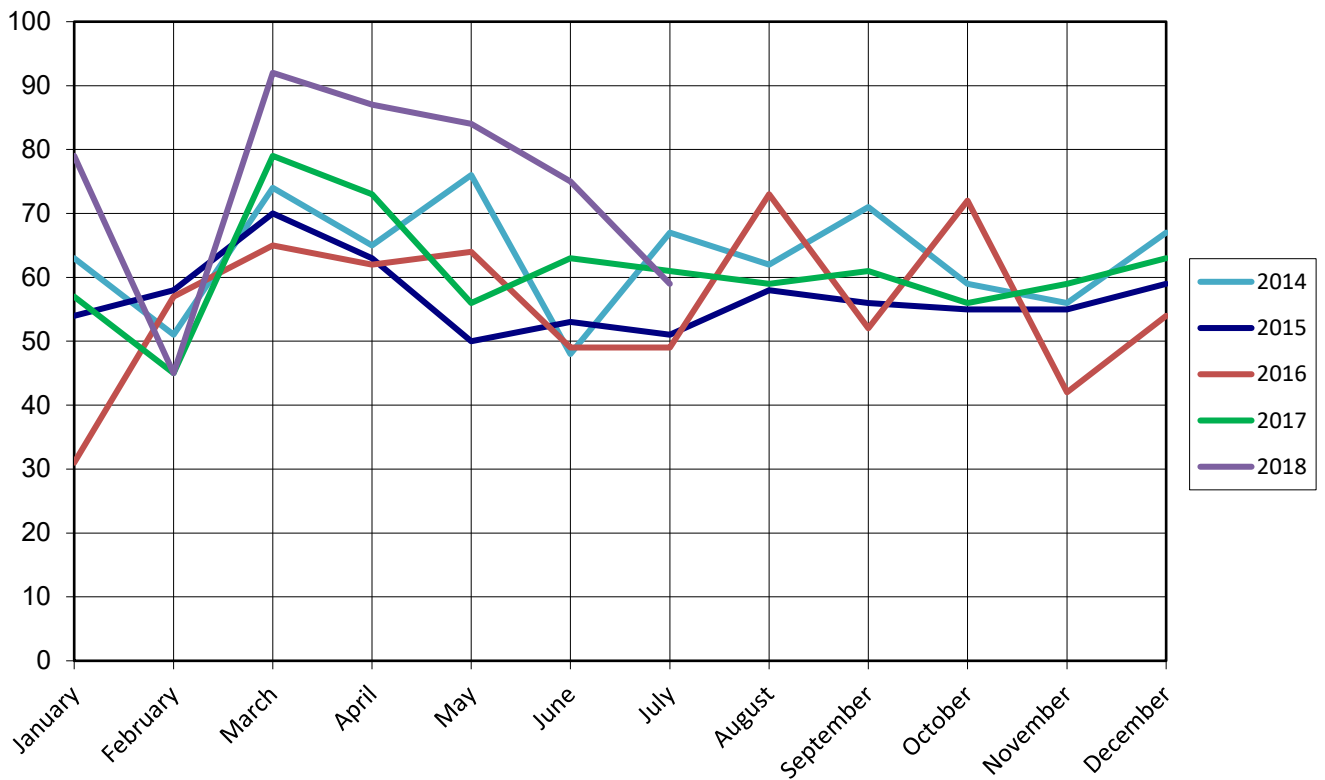
Report on Bankruptcy Case Filings July 2018

| | Month Total | 2018 Total | 2017 YTD Total |
|--------|-------------|------------|----------------|
| Ch. 7 | 33 | 326 | 289 (+37) |
| Ch. 13 | 25 | 181 | 130 (+51) |
| Ch. 11 | 1 | 14 | 15 (-1) |
| | 59 | 521 | 434 (+87) |

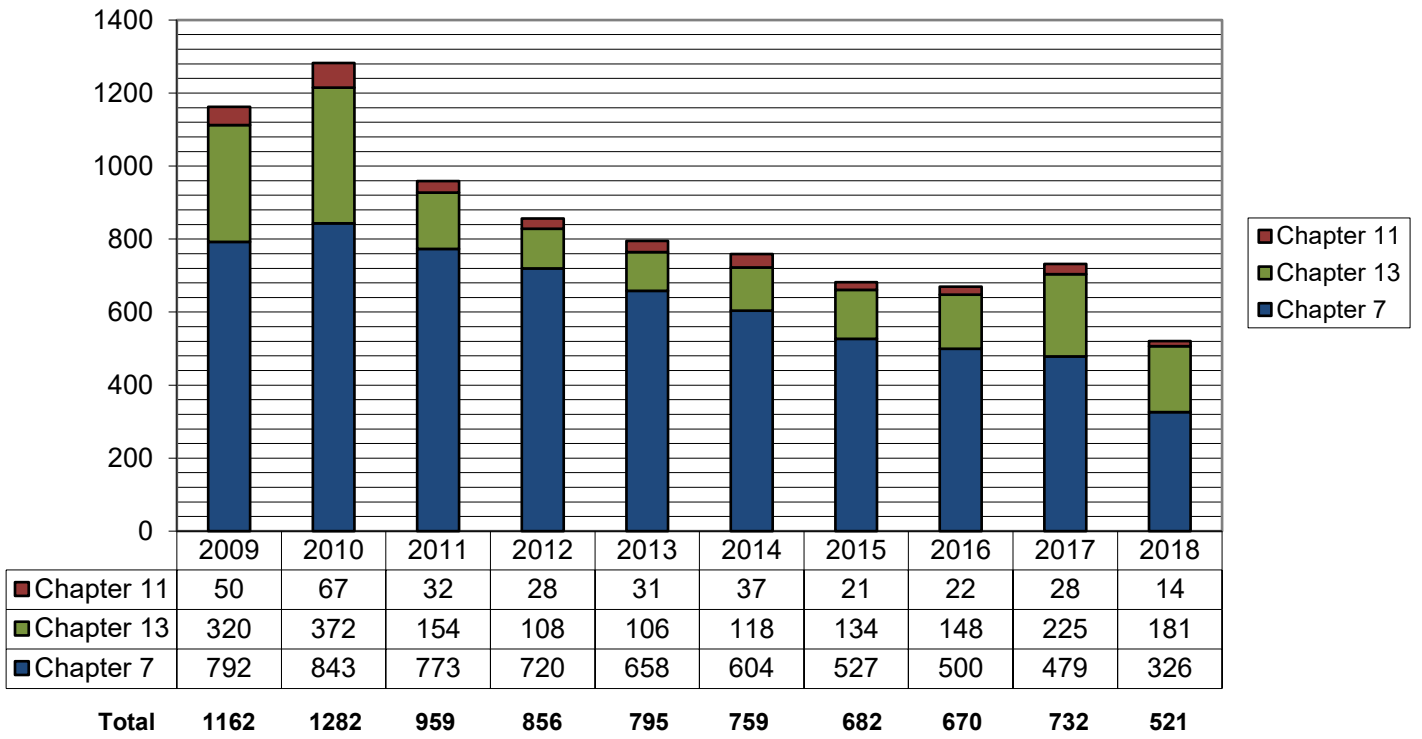
As of July 31, 2018:

- ◆ The projected total of cases for 2018 is **897**
- ◆ Compared to 2017, filings increased by **20%**
- ◆ An average of **2.5** cases were filed each day

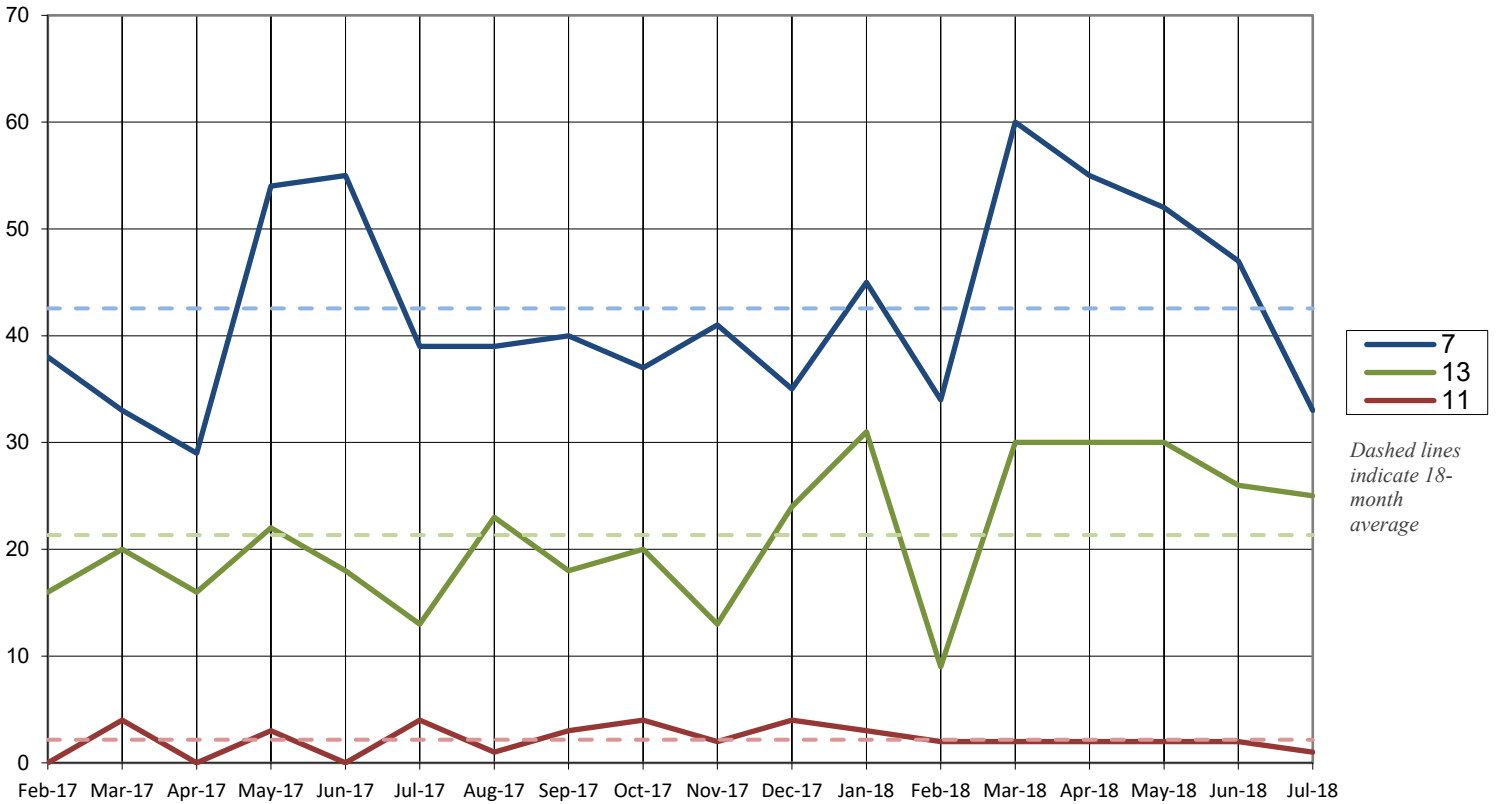
Cases Filed per Month by Year



Total Cases Filed per Year

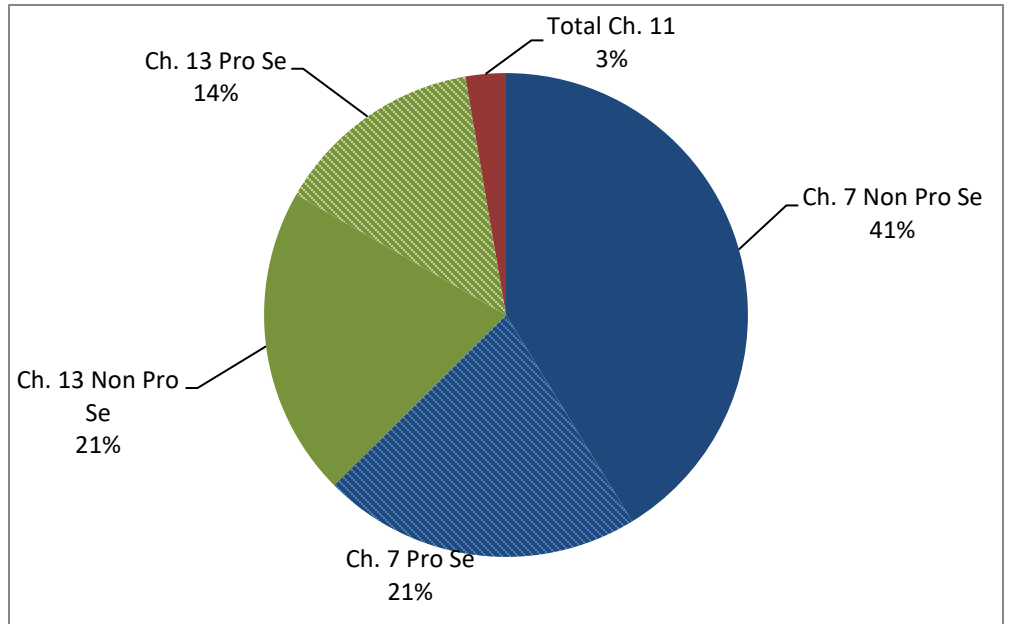


Cases Filed Per Month by Chapter - 18 months



Pro Se Filings 2018

| | Total | Pro Se |
|--------|-------|--------|
| Ch. 7 | 326 | 111 |
| Ch. 13 | 181 | 73 |
| Ch. 11 | 14 | 4 |



United States Bankruptcy Court for the District of Columbia

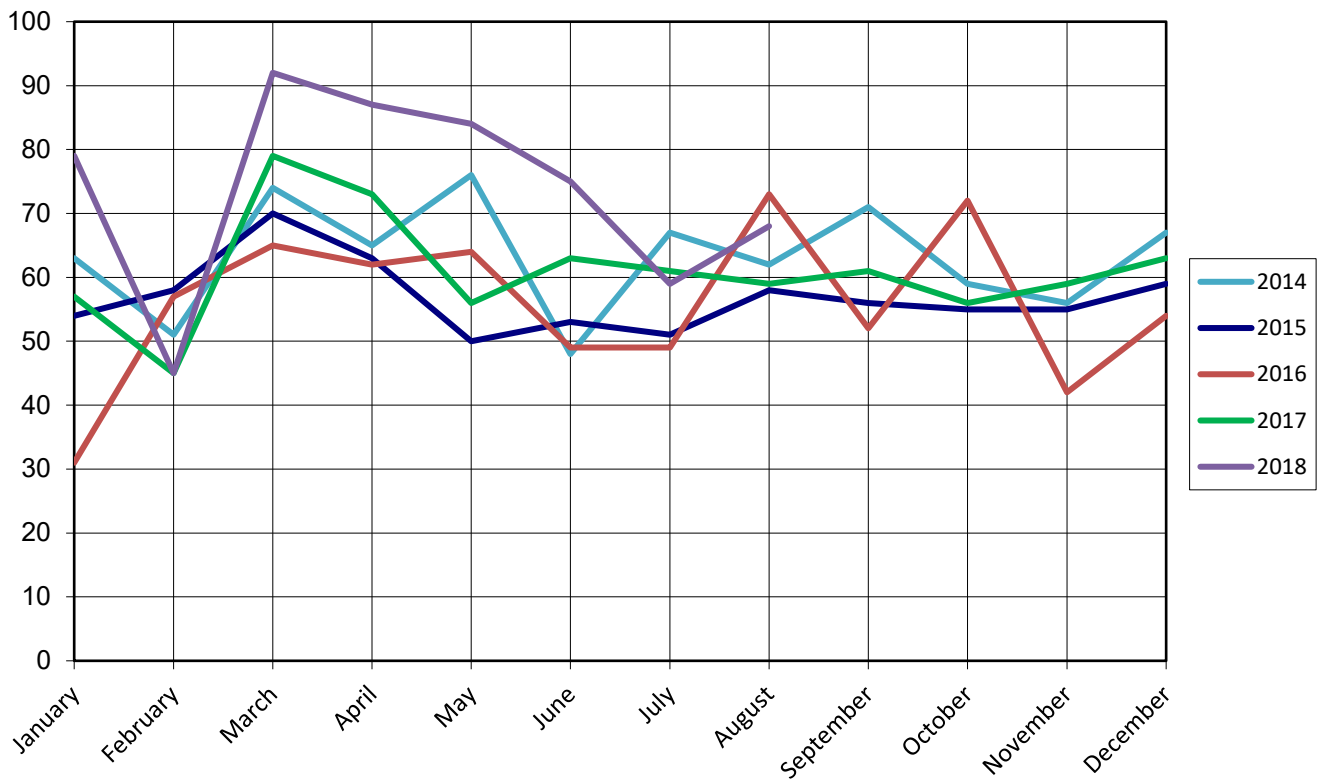
Report on Bankruptcy Case Filings August 2018

| | Month Total | 2018 Total | 2017 YTD Total |
|--------|-------------|------------|----------------|
| Ch. 7 | 42 | 368 | 328 (+40) |
| Ch. 13 | 22 | 203 | 150 (+53) |
| Ch. 11 | 4 | 18 | 18 (+3) |
| | 68 | 589 | 493 (+96) |

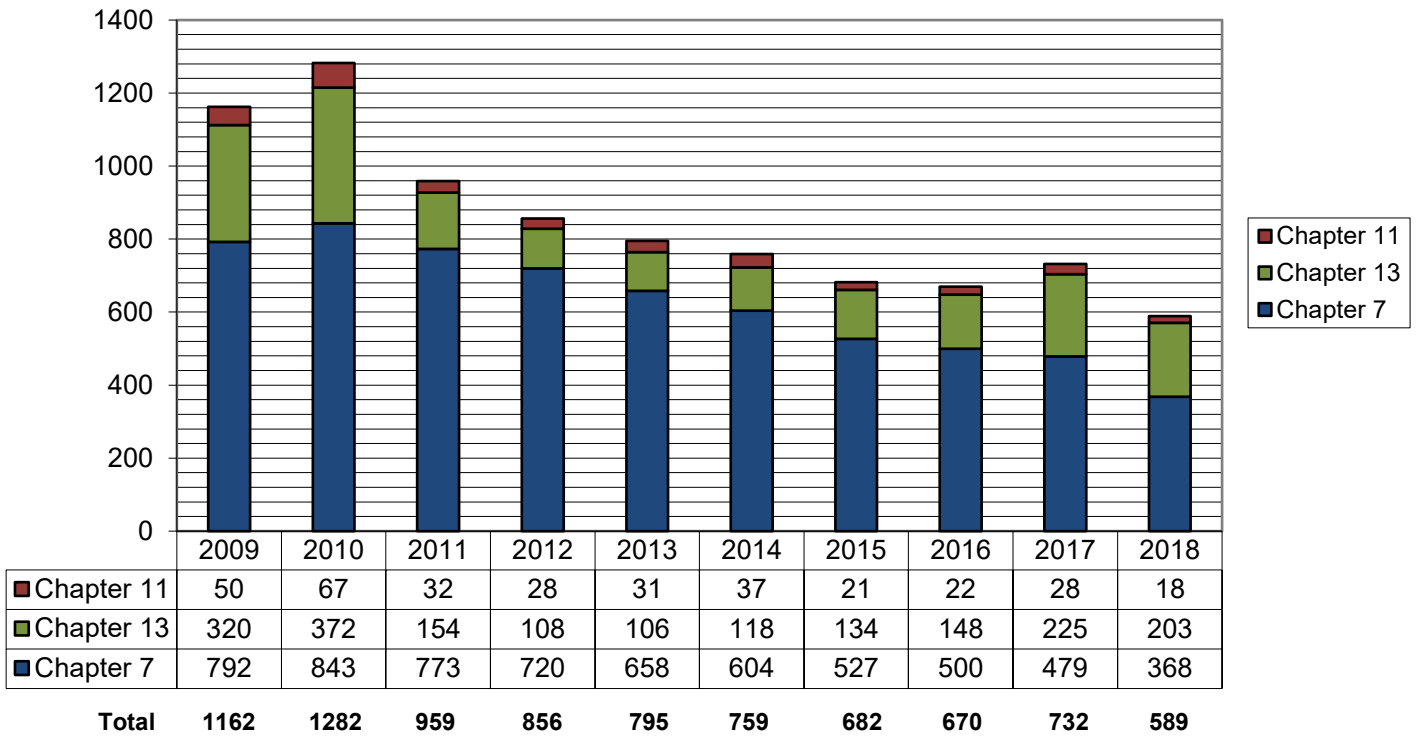
As of August 31, 2018:

- ◆ The projected total of cases for 2018 is **885**
- ◆ Compared to 2017, filings increased by **19.5%**
- ◆ An average of **2.4** cases were filed each day

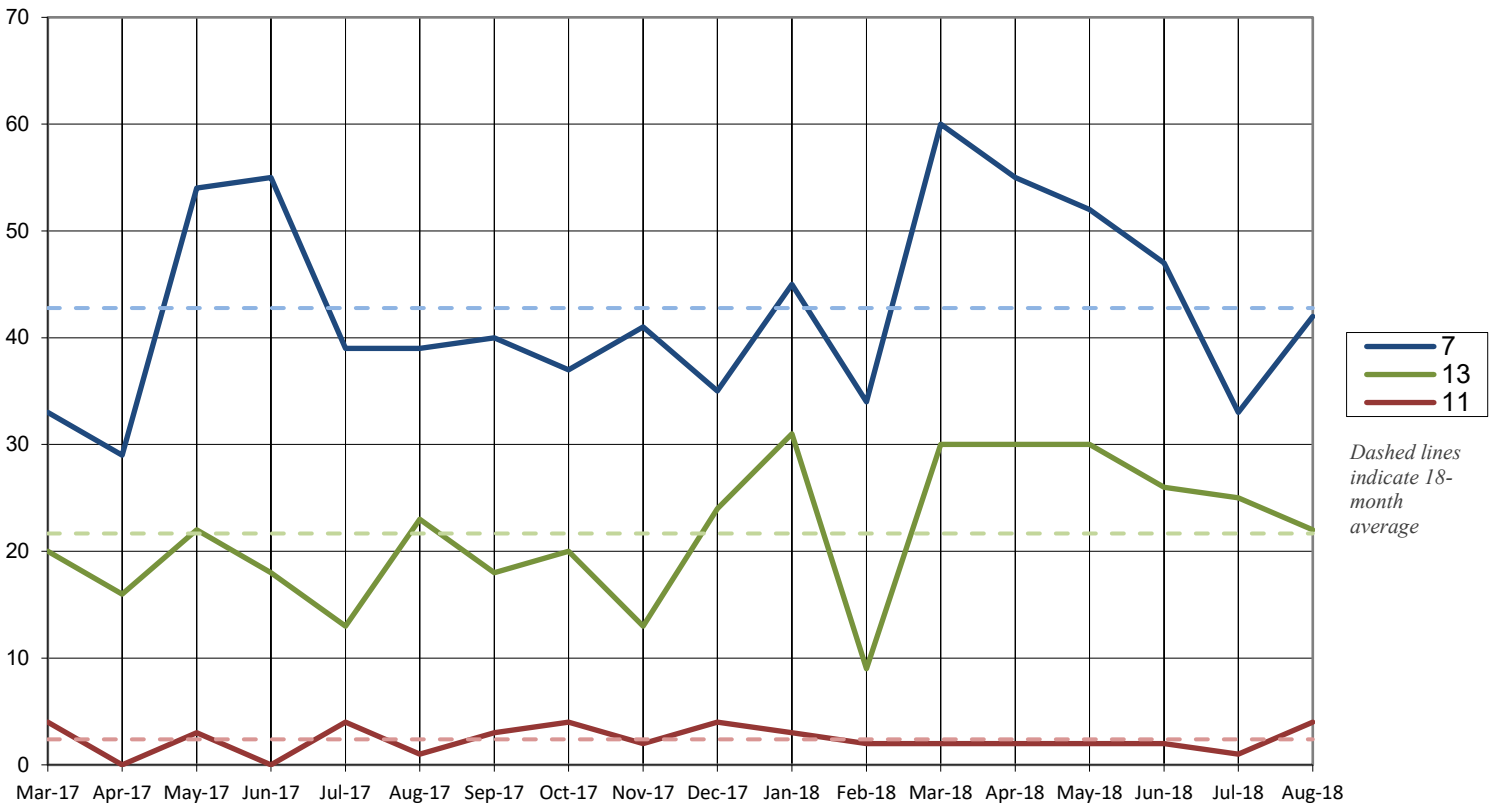
Cases Filed per Month by Year



Total Cases Filed per Year

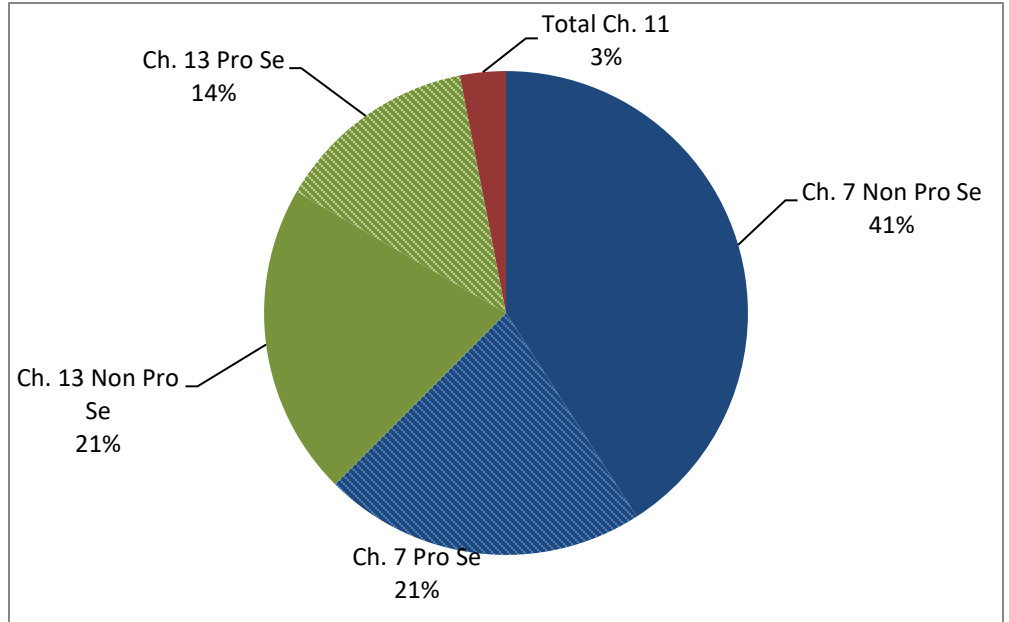


Cases Filed Per Month by Chapter - 18 months



Pro Se Filings 2018

| | Total | Pro Se |
|--------|-------|--------|
| Ch. 7 | 368 | 127 |
| Ch. 13 | 203 | 80 |
| Ch. 11 | 18 | 4 |



United States Bankruptcy Court for the District of Columbia

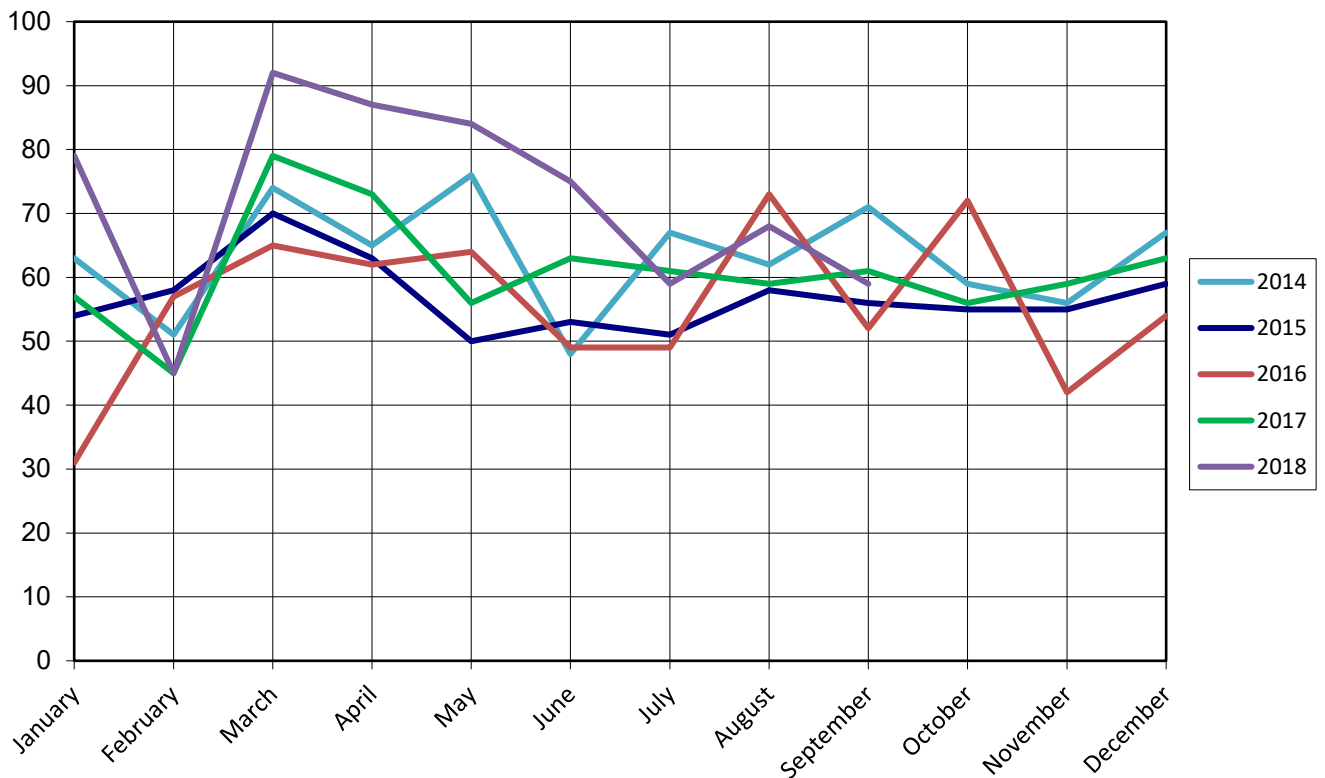
Report on Bankruptcy Case Filings September 2018

| | Month Total | 2018 Total | 2017 YTD Total |
|--------|-------------|------------|----------------|
| Ch. 7 | 39 | 407 | 365 (+42) |
| Ch. 13 | 19 | 222 | 170 (+52) |
| Ch. 11 | 1 | 19 | 19 (+0) |
| | 59 | 648 | 554 (+94) |

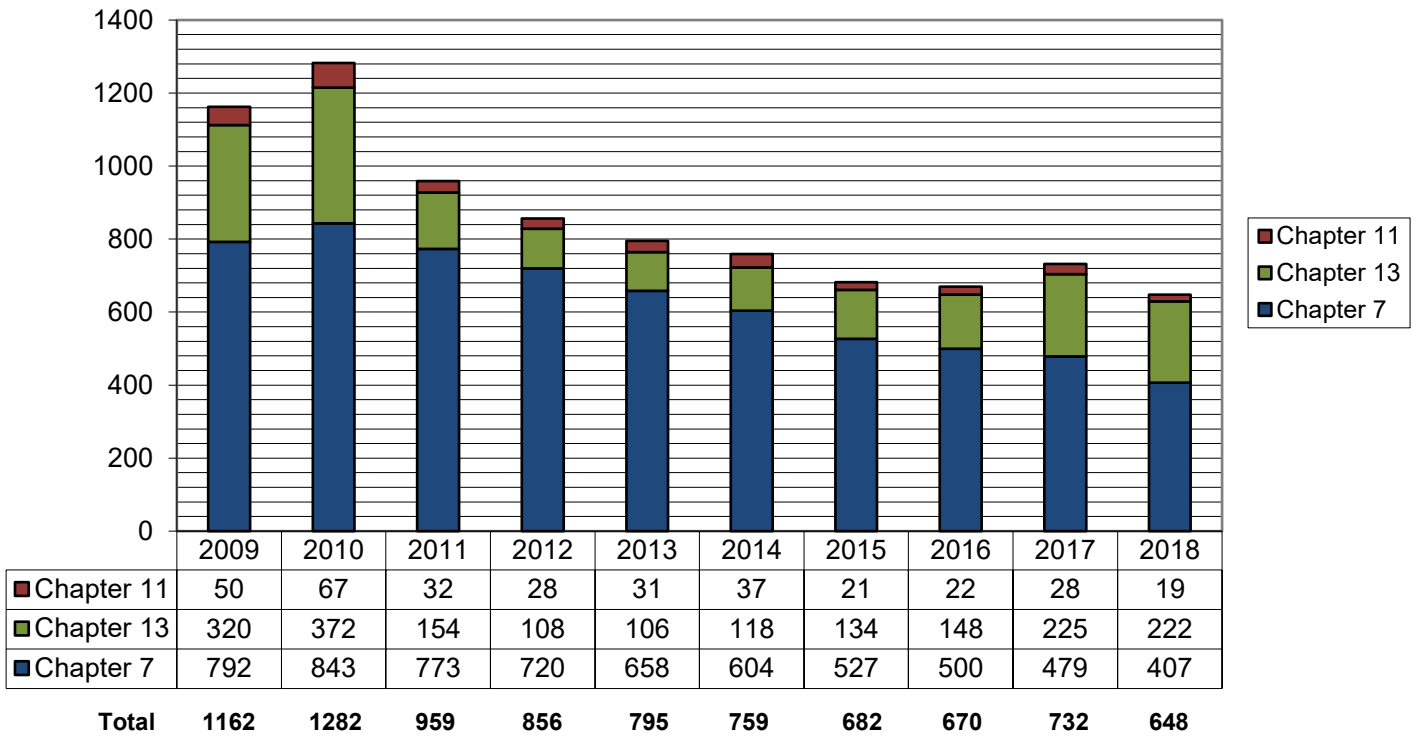
As of September 30, 2018:

- ◆ The projected total of cases for 2018 is **866**
- ◆ Compared to 2017, filings increased by **17%**
- ◆ An average of **2.4** cases were filed each day

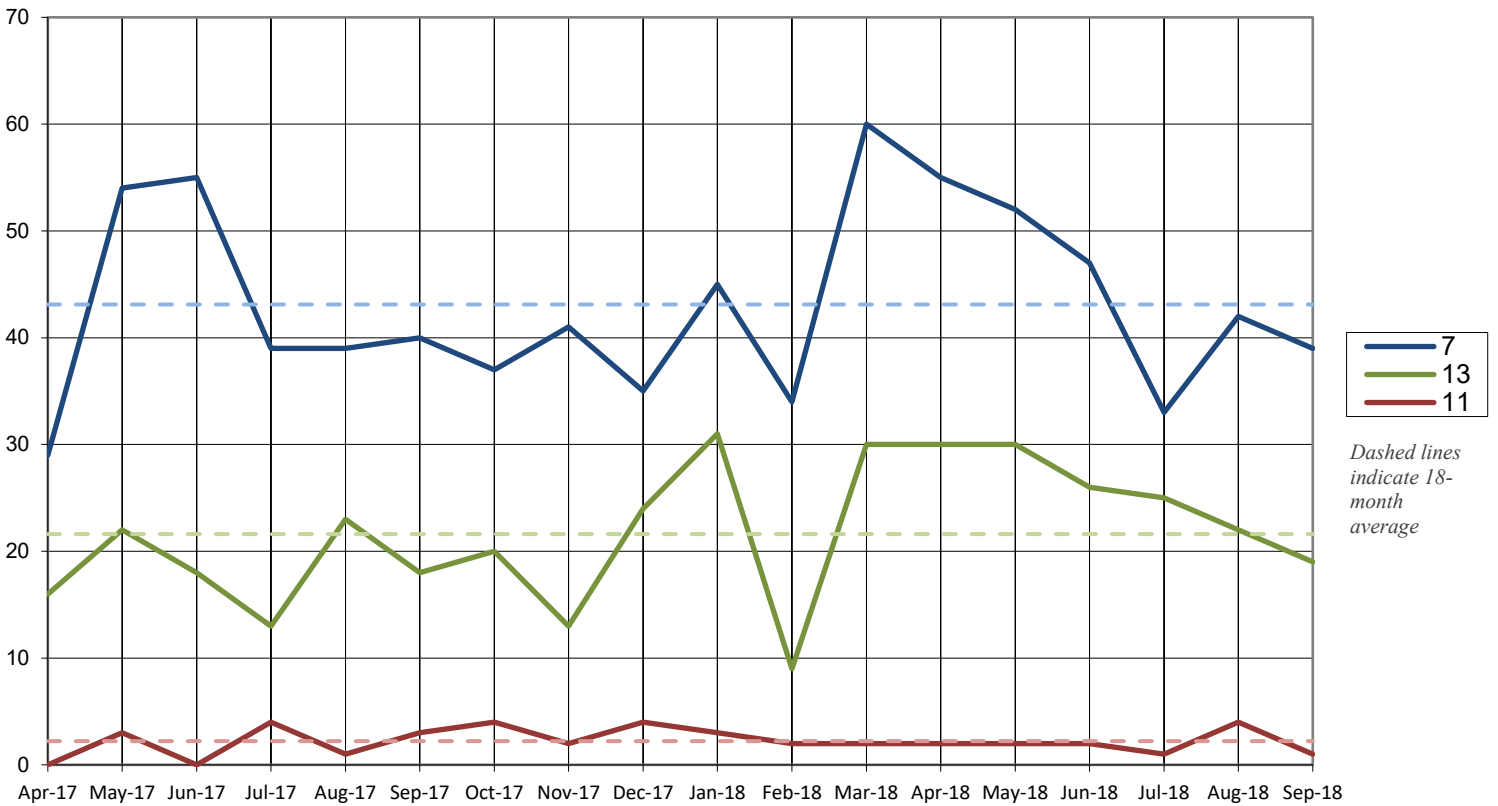
Cases Filed per Month by Year



Total Cases Filed per Year

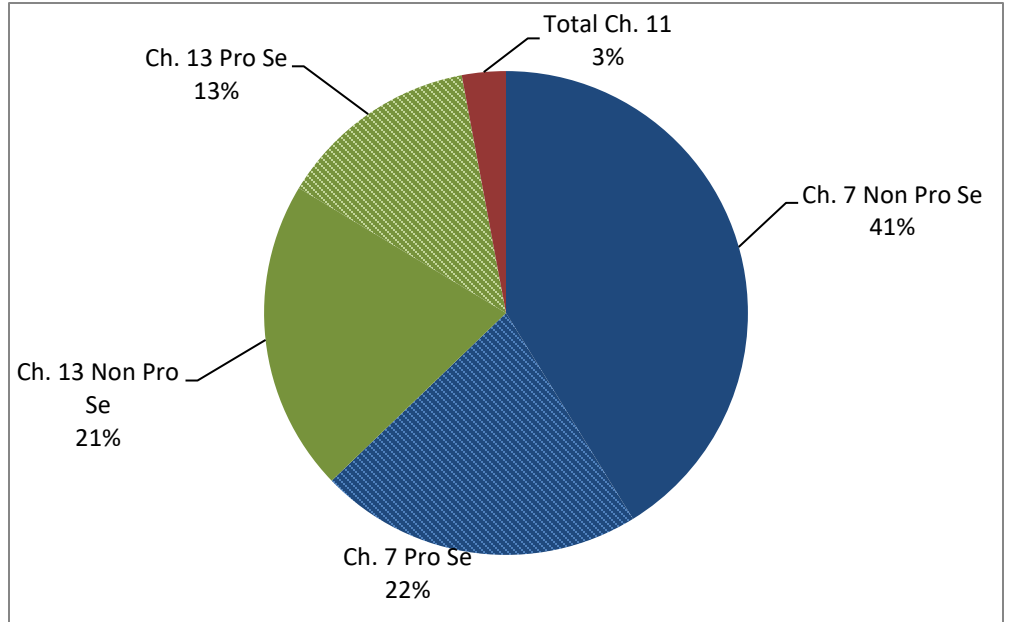


Cases Filed Per Month by Chapter - 18 months



Pro Se Filings 2018

| | Total | Pro Se |
|--------|-------|--------|
| Ch. 7 | 407 | 140 |
| Ch. 13 | 222 | 87 |
| Ch. 11 | 19 | 4 |



United States Bankruptcy Court for the District of Columbia

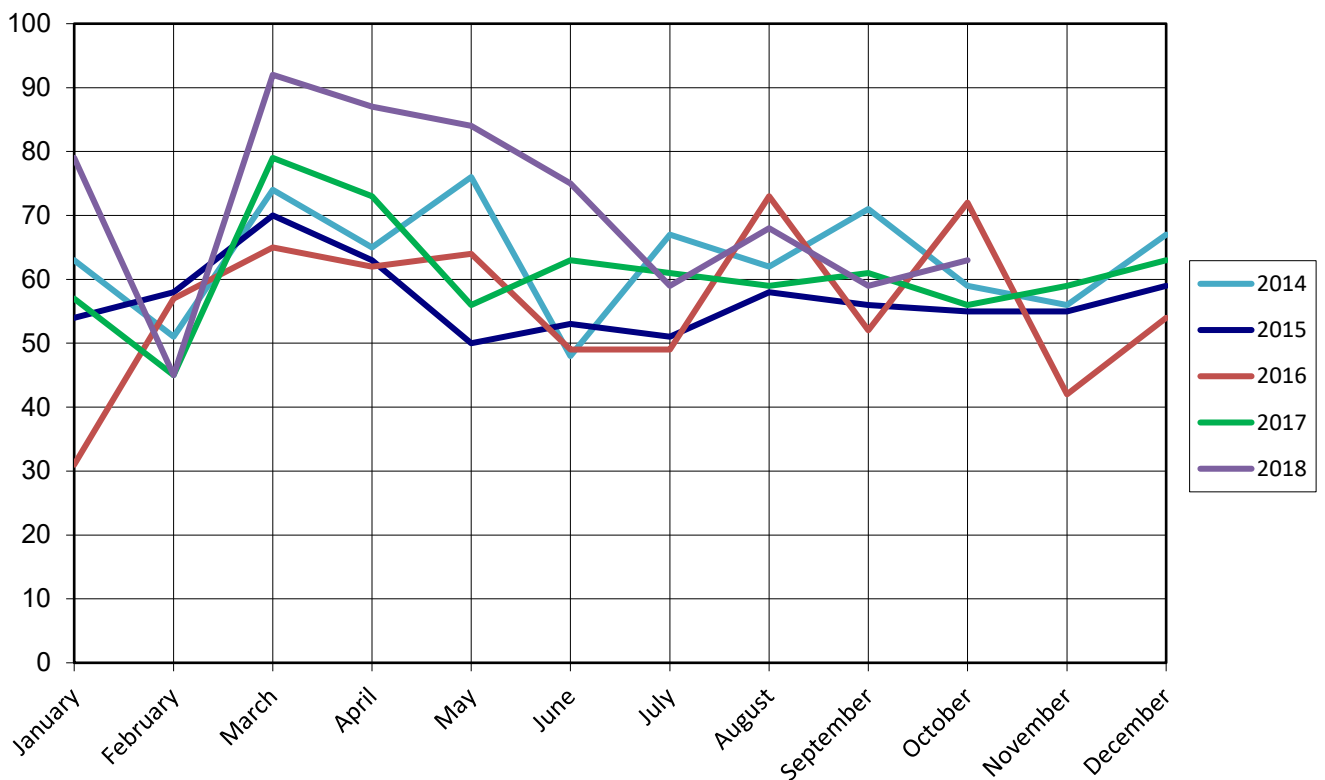
Report on Bankruptcy Case Filings October 2018

| | Month Total | 2018 Total | 2017 YTD Total |
|--------|-------------|------------|----------------|
| Ch. 7 | 46 | 453 | 406 (+47) |
| Ch. 13 | 15 | 237 | 183 (+54) |
| Ch. 11 | 2 | 21 | 21 (+0) |
| | 63 | 711 | 610 (+101) |

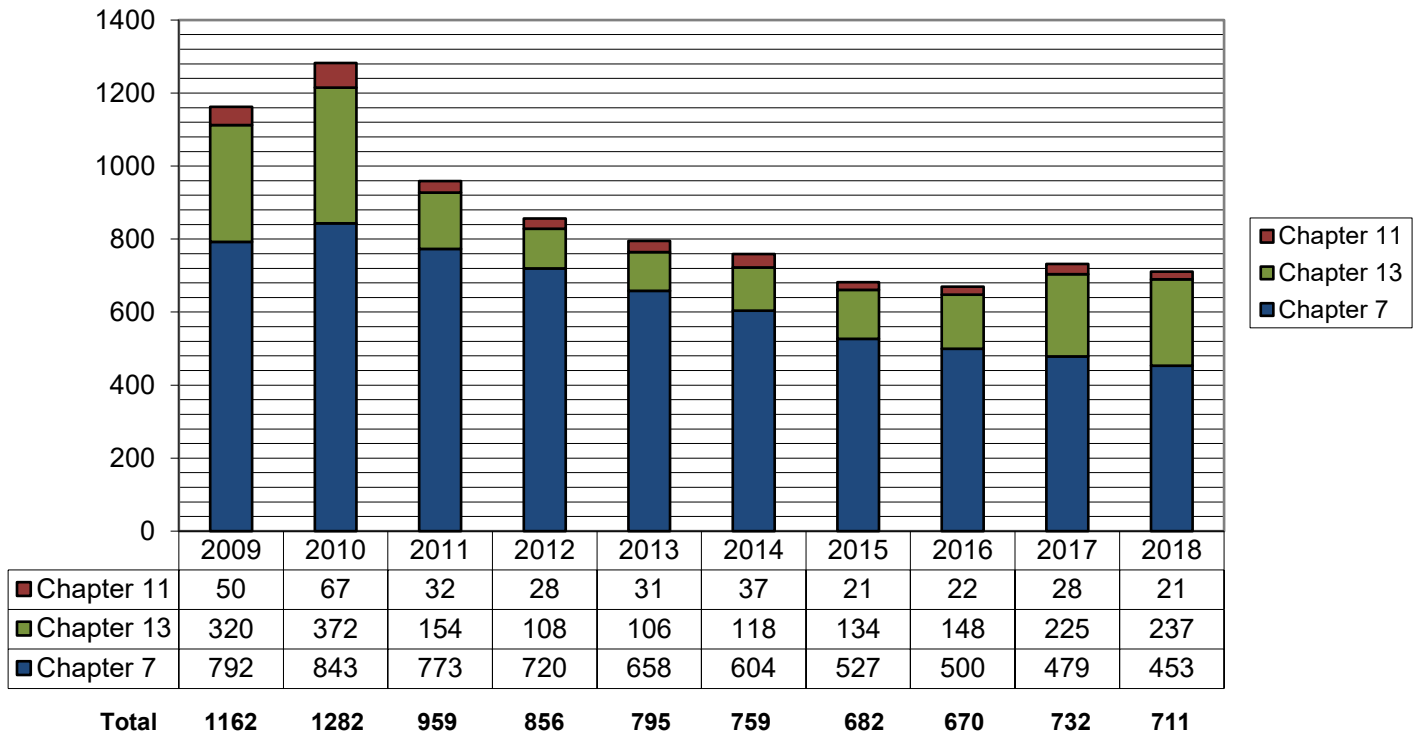
As of October 31, 2018:

- ◆ The projected total of cases for 2018 is **854**
- ◆ Compared to 2017, filings increased by **16.6%**
- ◆ An average of **2.3** cases were filed each day

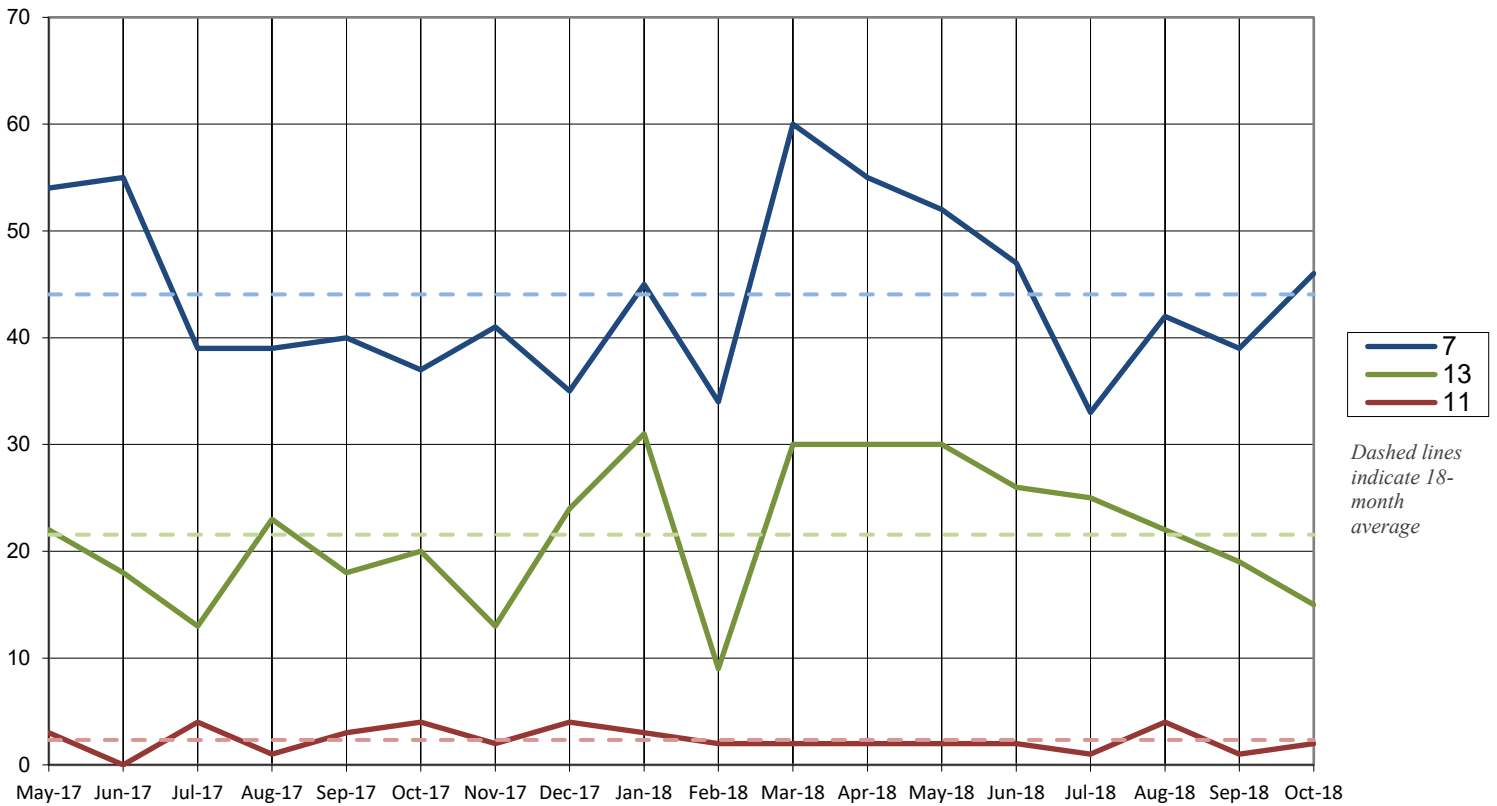
Cases Filed per Month by Year



Total Cases Filed per Year

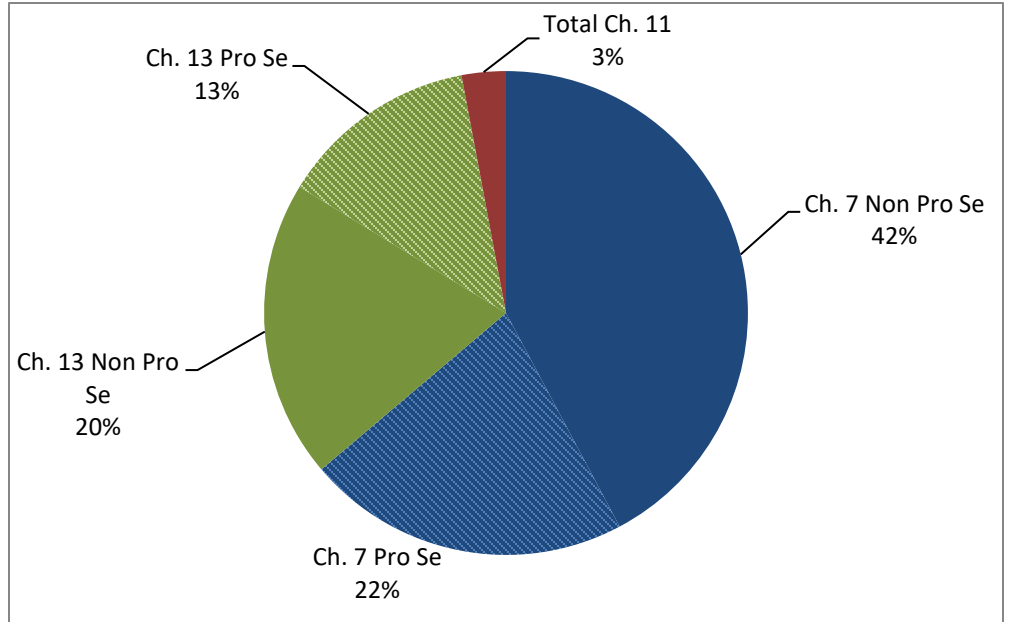


Cases Filed Per Month by Chapter - 18 months



Pro Se Filings 2018

| | Total | Pro Se |
|--------|-------|--------|
| Ch. 7 | 453 | 154 |
| Ch. 13 | 237 | 95 |
| Ch. 11 | 21 | 4 |



United States Bankruptcy Court for the District of Columbia

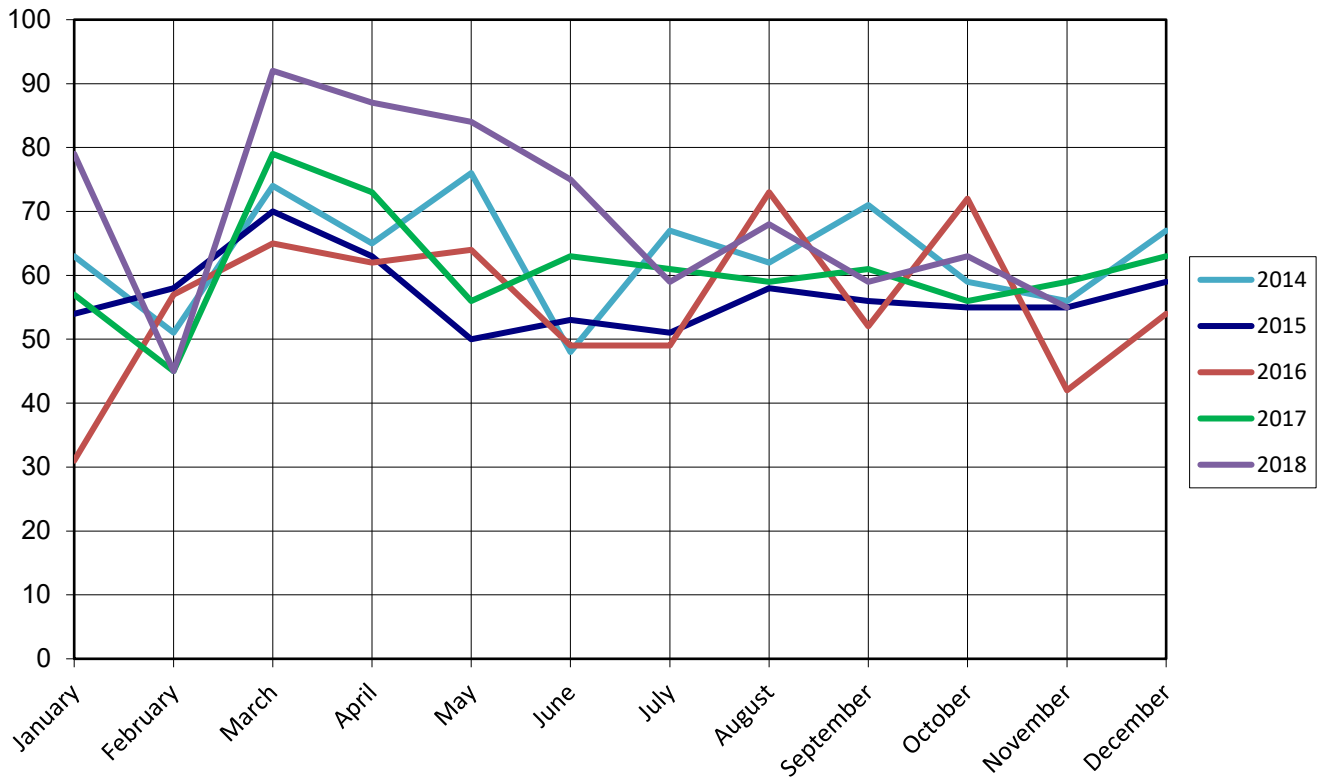
Report on Bankruptcy Case Filings November 2018

| | Month Total | 2018 Total | 2017 YTD Total |
|--------|-------------|------------|----------------|
| Ch. 7 | 38 | 491 | 444 (+47) |
| Ch. 13 | 16 | 253 | 201 (+52) |
| Ch. 11 | 1 | 22 | 24 (-2) |
| | 55 | 766 | 669 (+97) |

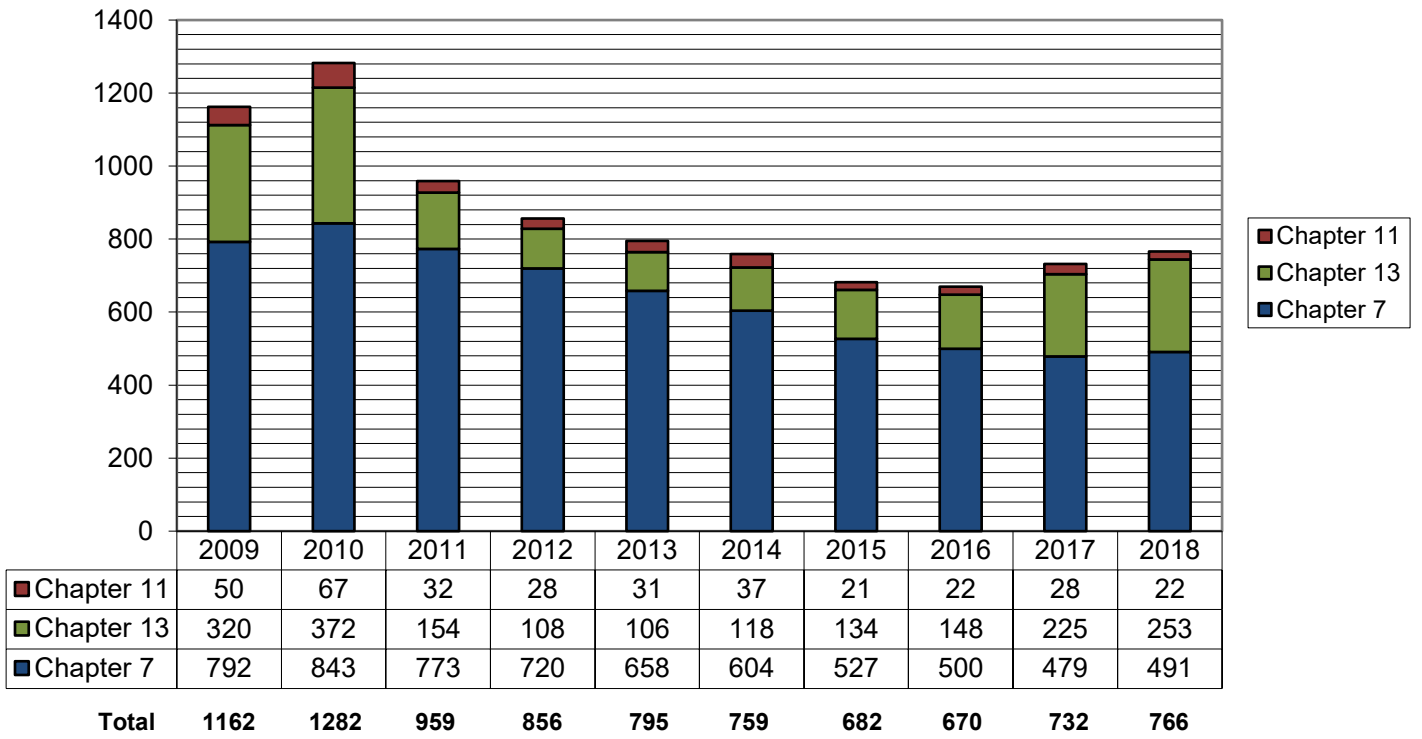
As of November 30, 2018:

- ◆ The projected total of cases for 2018 is **837**
- ◆ Compared to 2017, filings increased by **14.5%**
- ◆ An average of **2.3** cases were filed each day

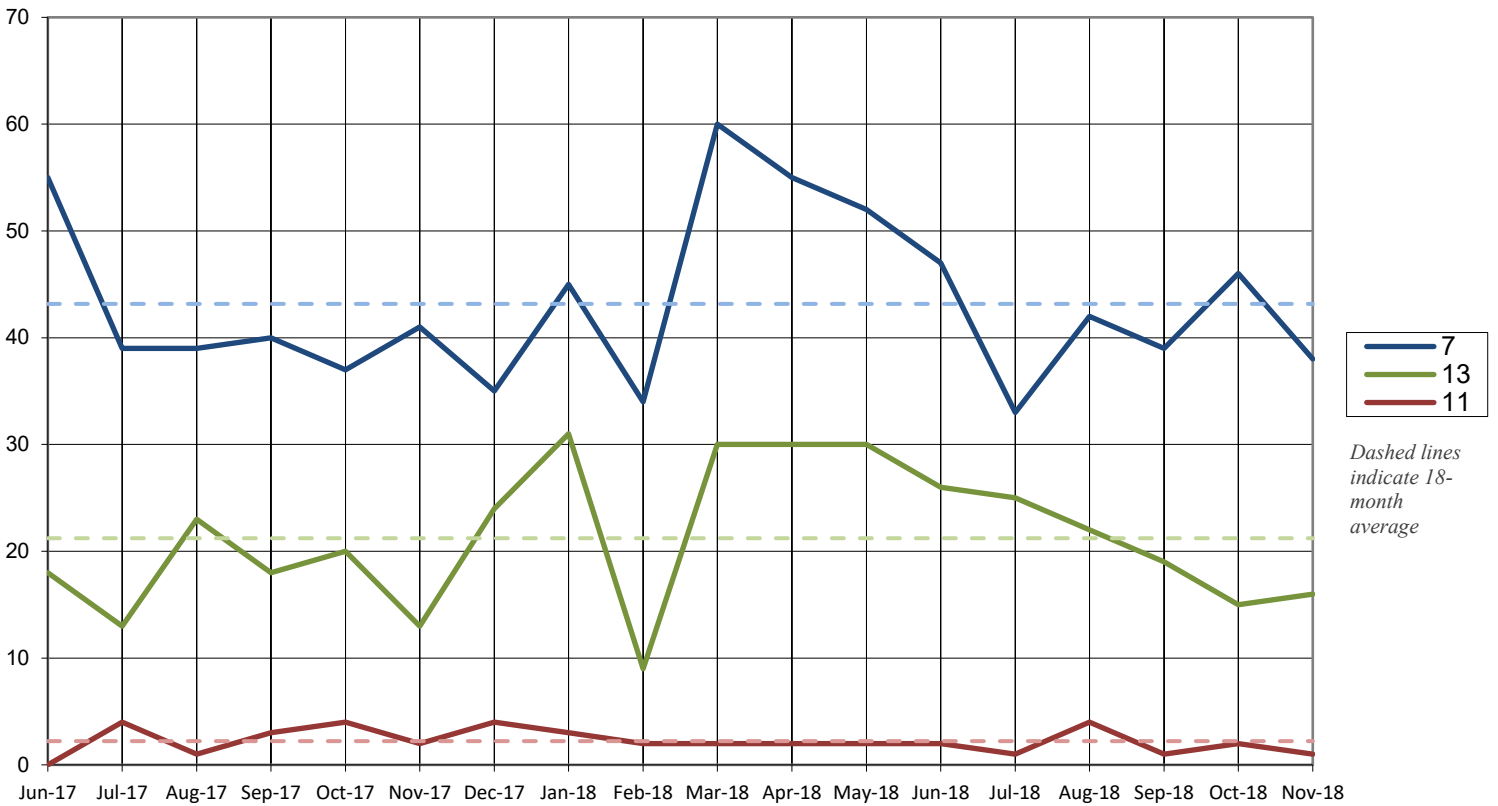
Cases Filed per Month by Year



Total Cases Filed per Year

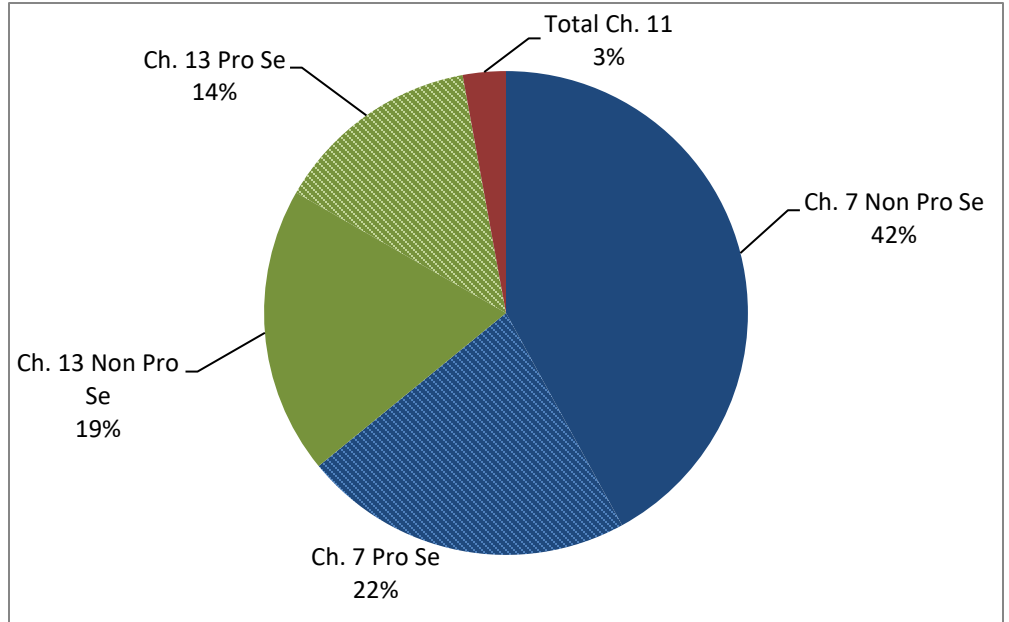


Cases Filed Per Month by Chapter - 18 months



Pro Se Filings 2018

| | Total | Pro Se |
|--------|-------|--------|
| Ch. 7 | 491 | 169 |
| Ch. 13 | 253 | 106 |
| Ch. 11 | 22 | 4 |



United States Bankruptcy Court for the District of Columbia

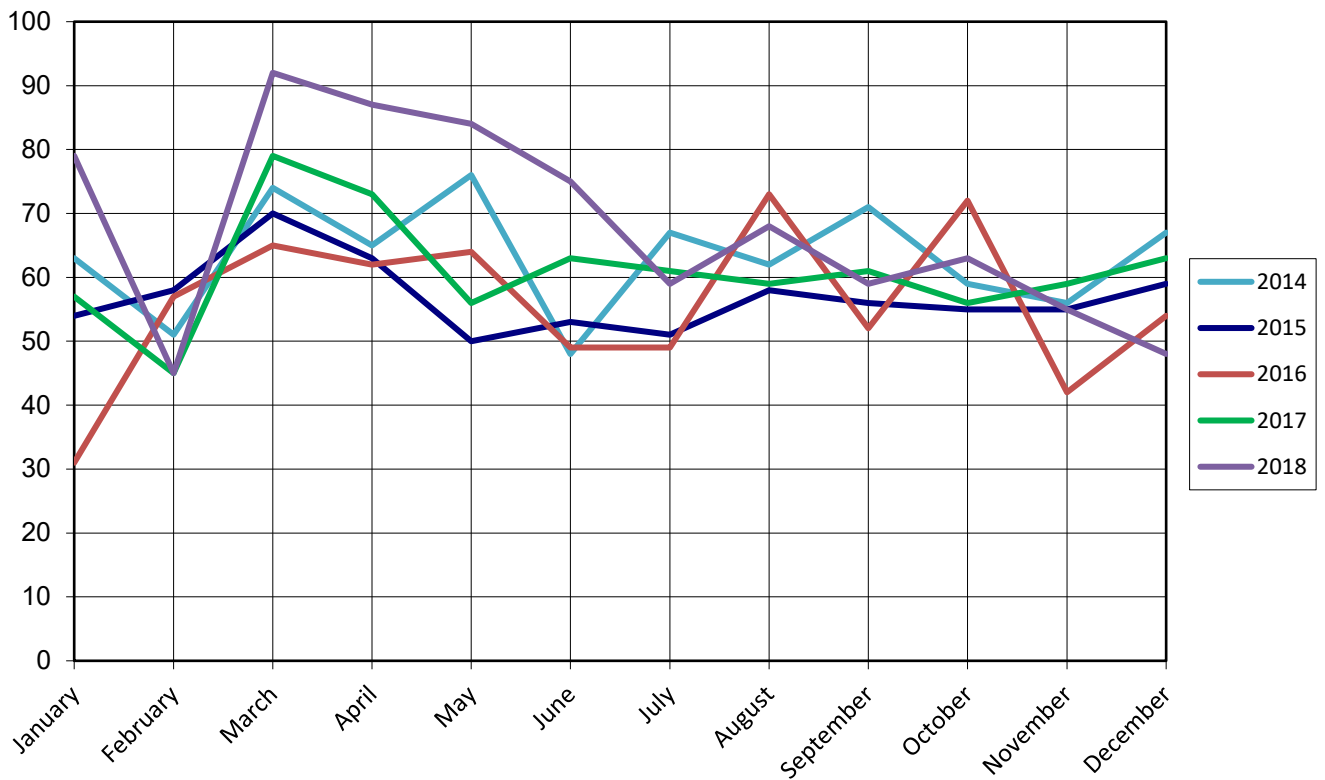
Report on Bankruptcy Case Filings December 2018

| | Month Total | 2018 Total | 2017 YTD Total |
|--------|-------------|------------|----------------|
| Ch. 7 | 28 | 519 | 479 (+40) |
| Ch. 13 | 19 | 272 | 225 (+47) |
| Ch. 11 | 1 | 23 | 28 (-5) |
| | 48 | 814 | 732 (+82) |

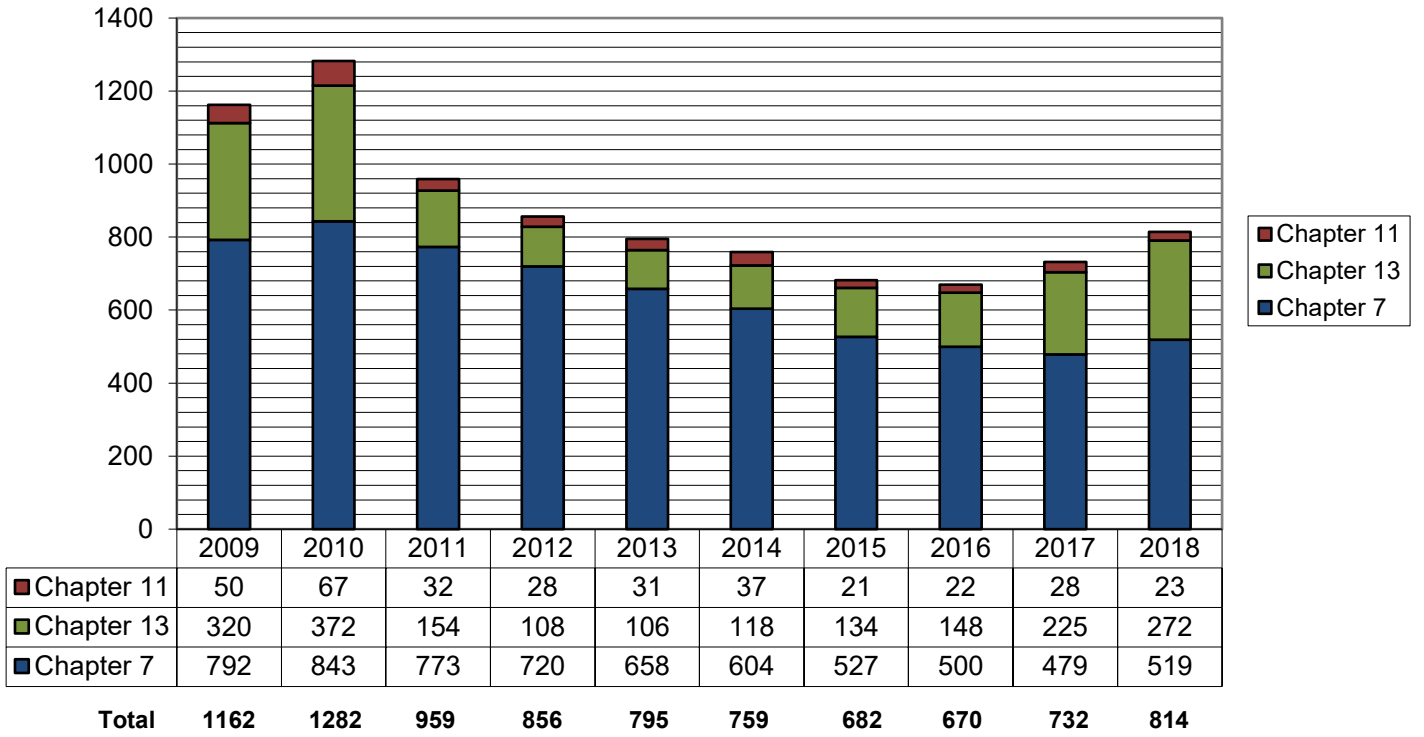
As of December 31, 2018:

- ◆ The total of cases for 2018 is **814**
- ◆ Compared to 2017, filings increased by **11.2%**
- ◆ An average of **2.2** cases were filed each day

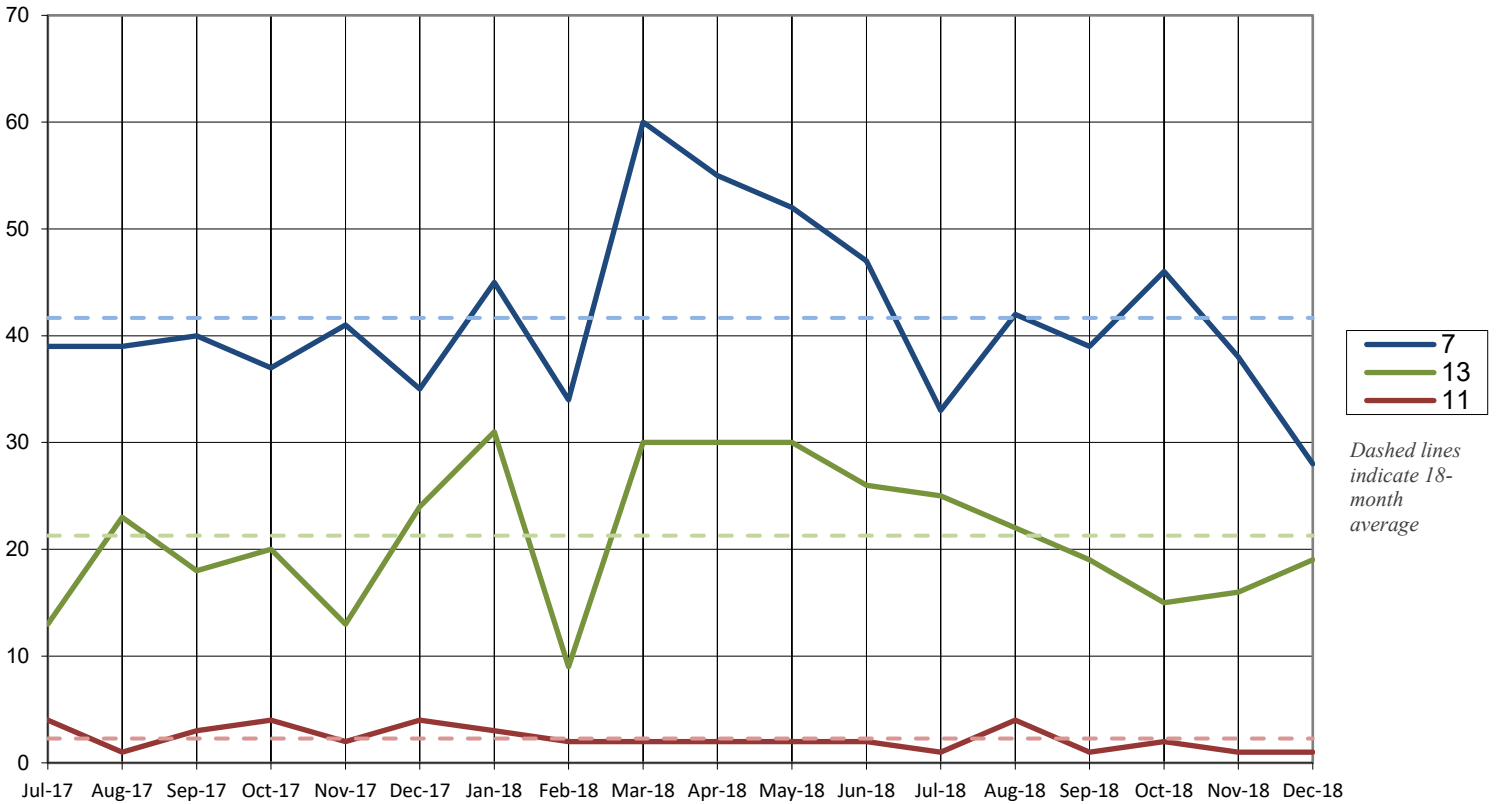
Cases Filed per Month by Year



Total Cases Filed per Year



Cases Filed Per Month by Chapter - 18 months



Pro Se Filings 2018

| | Total | Pro Se |
|--------|-------|--------|
| Ch. 7 | 519 | 180 |
| Ch. 13 | 272 | 113 |
| Ch. 11 | 23 | 4 |

