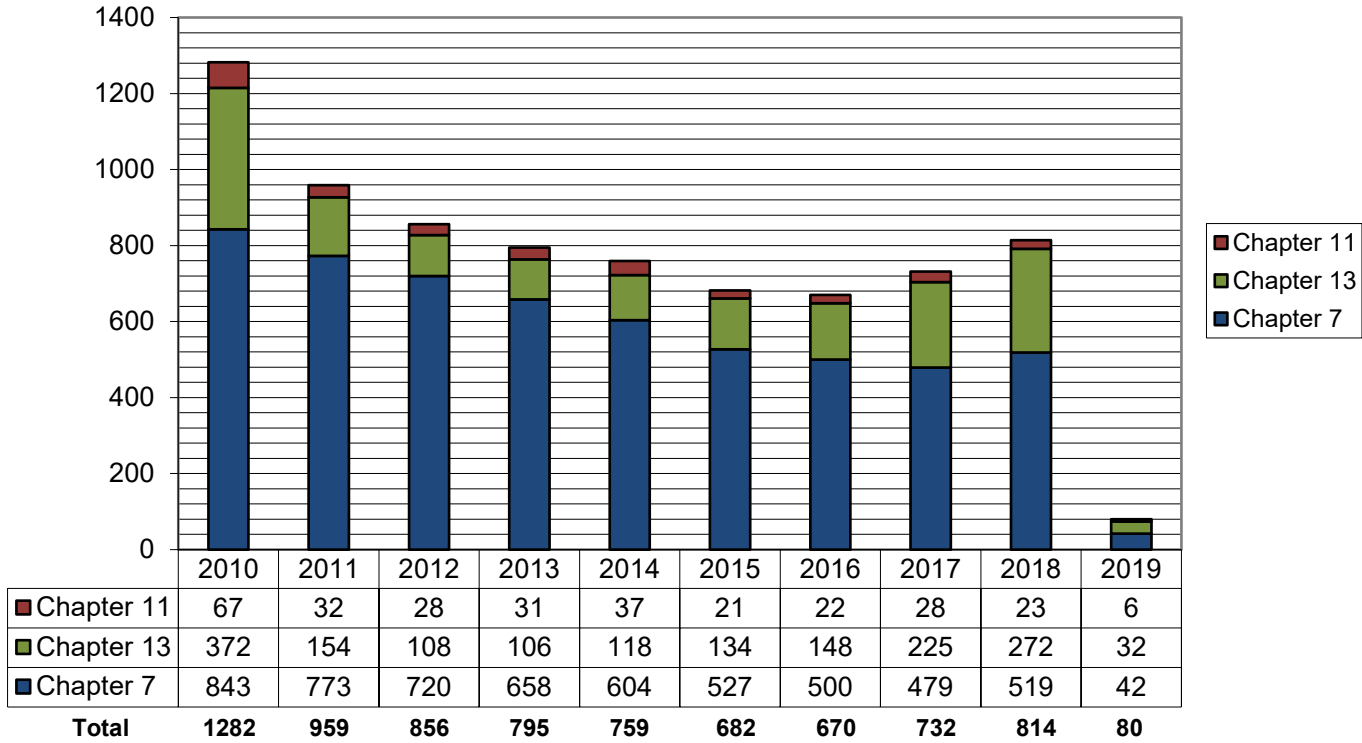
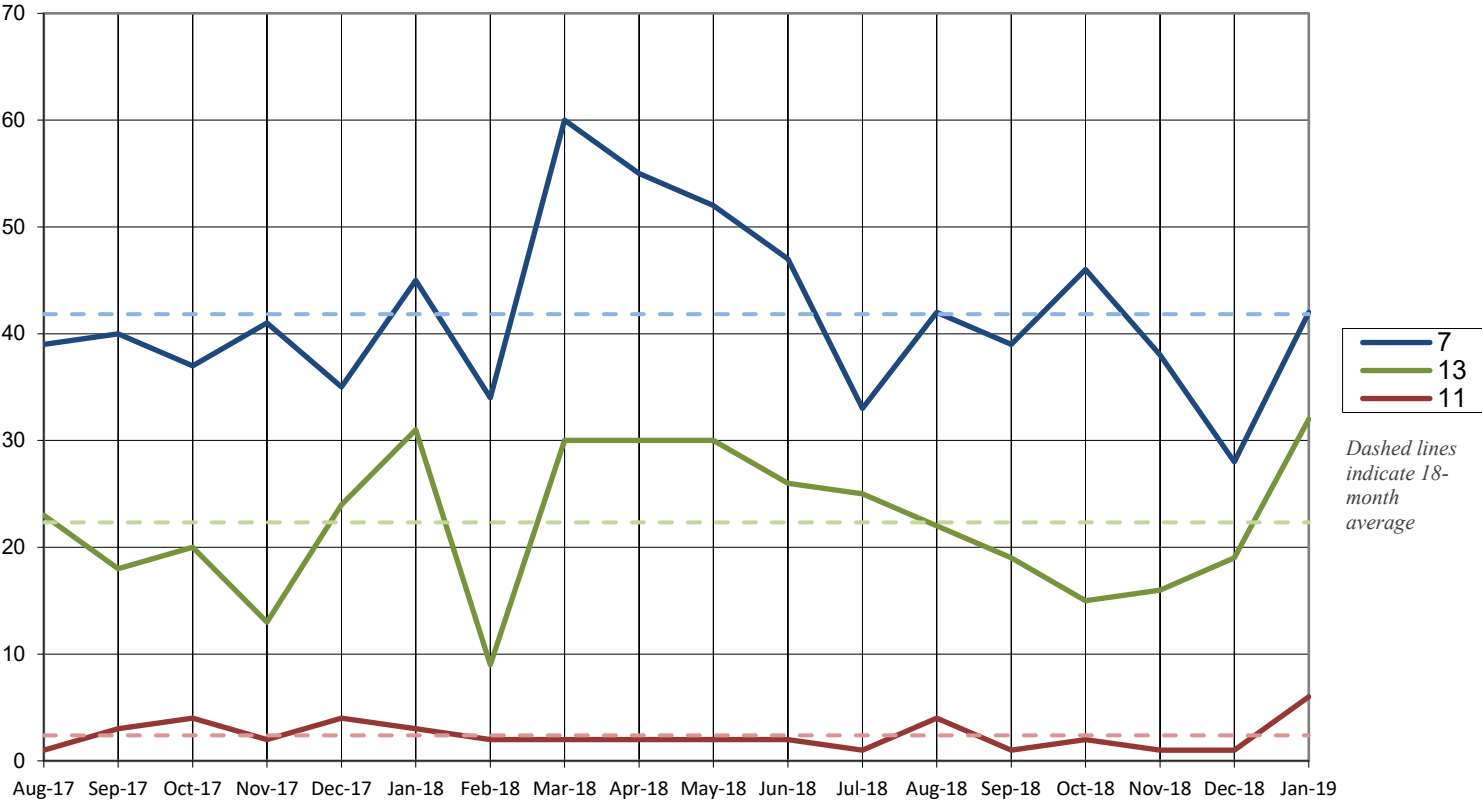


Total Cases Filed per Year

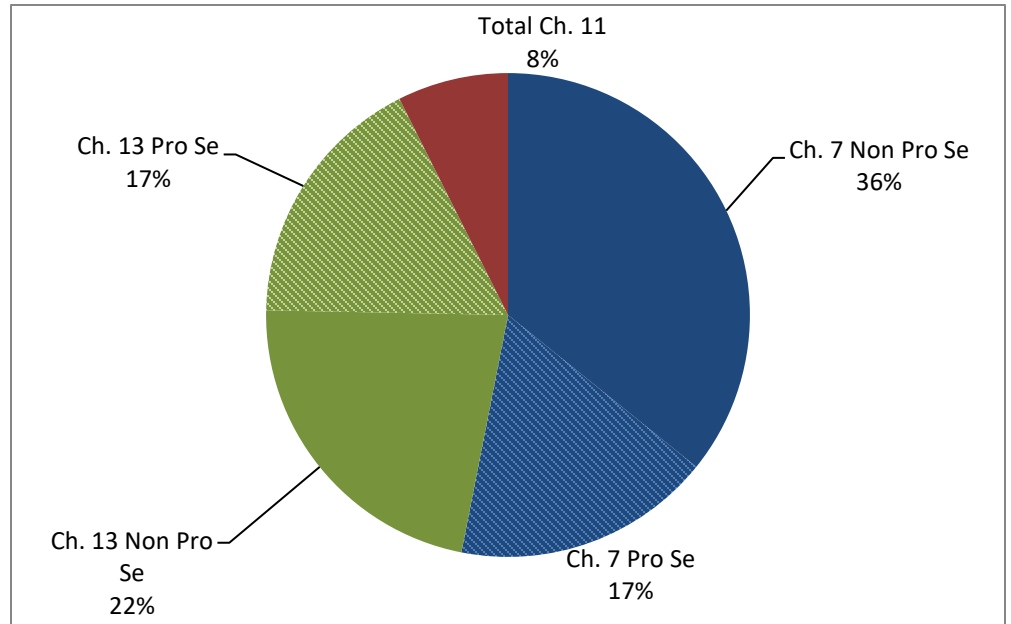


Cases Filed Per Month by Chapter - 18 months



Pro Se Filings 2019

	Total	Pro Se
Ch. 7	42	14
Ch. 13	32	14
Ch. 11	6	1



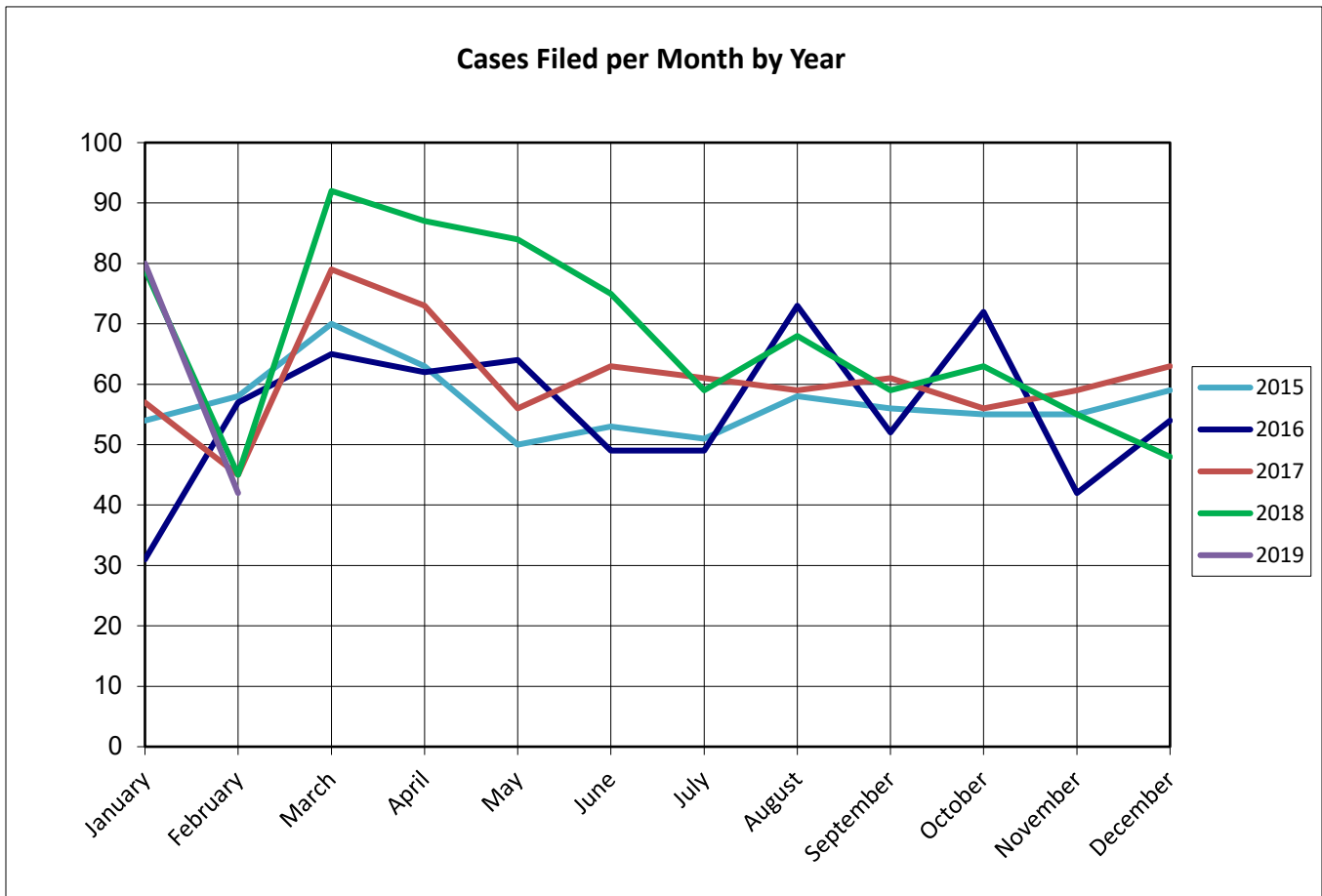
United States Bankruptcy Court for the District of Columbia

Report on Bankruptcy Case Filings February 2019

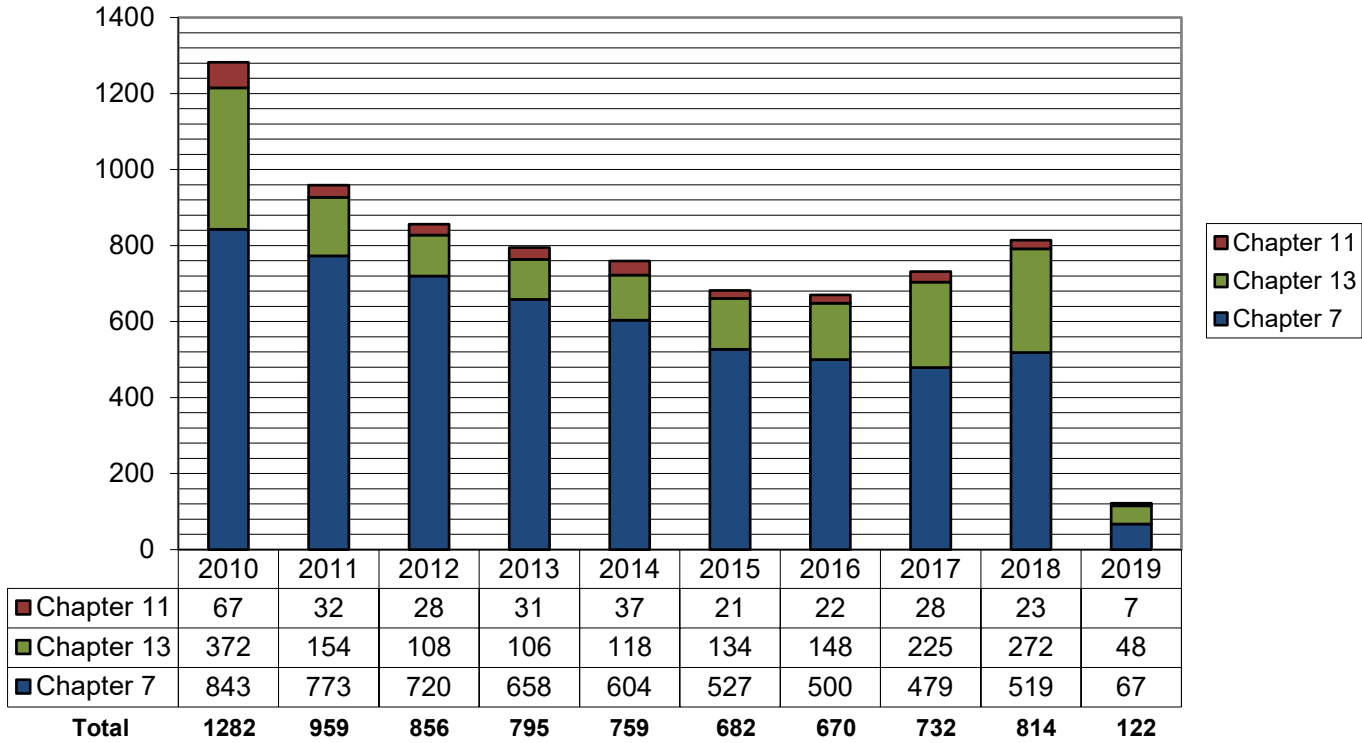
	Month Total	2019 Total	2018 YTD Total
Ch. 7	25	67	79 (-12)
Ch. 13	16	48	40 (+8)
Ch. 11	1	7	5 (+2)
	42	122	124 (-2)

As of February 28, 2019:

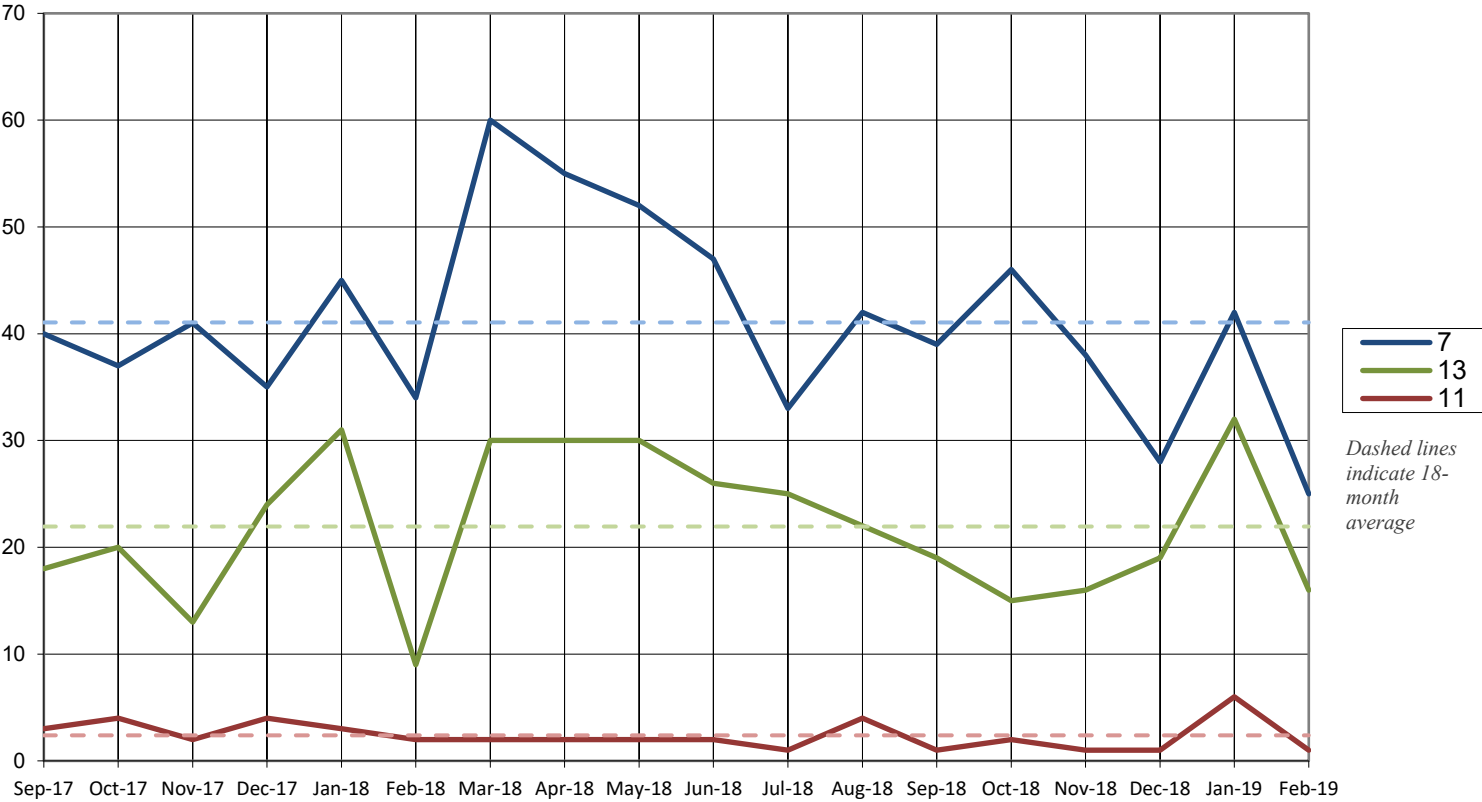
- ◆ The projected total of cases for 2019 is **755**
- ◆ Compared to 2018, filings decreased by **1.6%**
- ◆ An average of **2.1** cases were filed each day



Total Cases Filed per Year

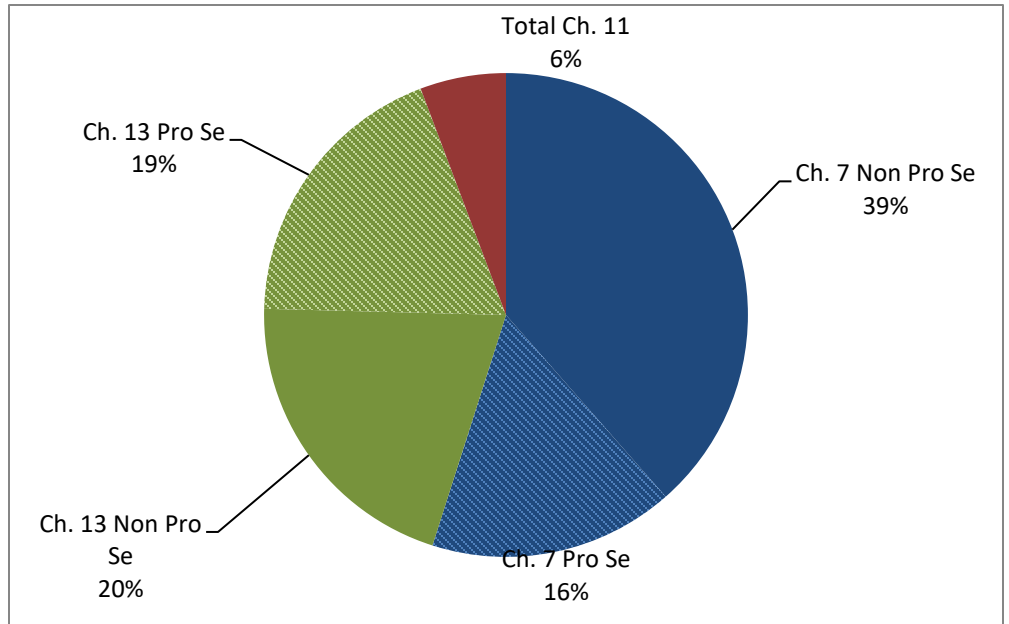


Cases Filed Per Month by Chapter - 18 months

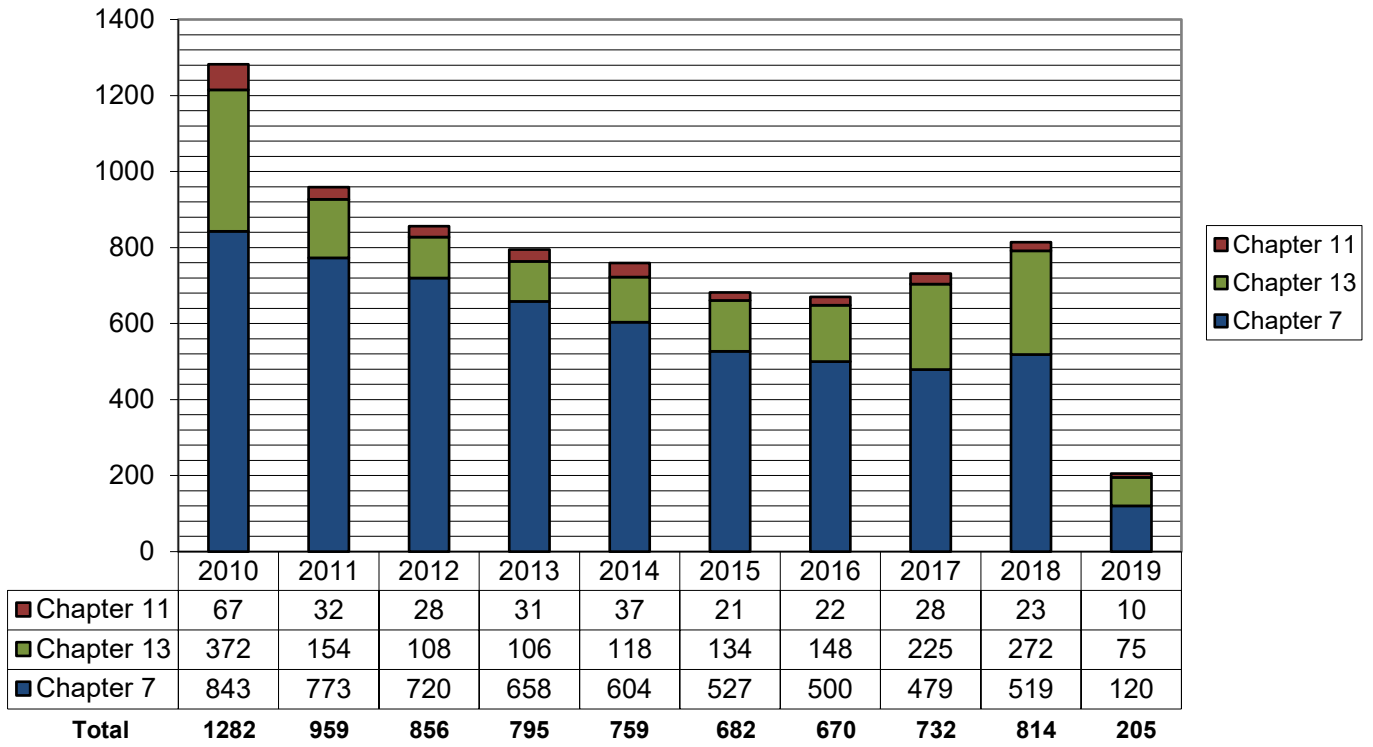


Pro Se Filings 2019

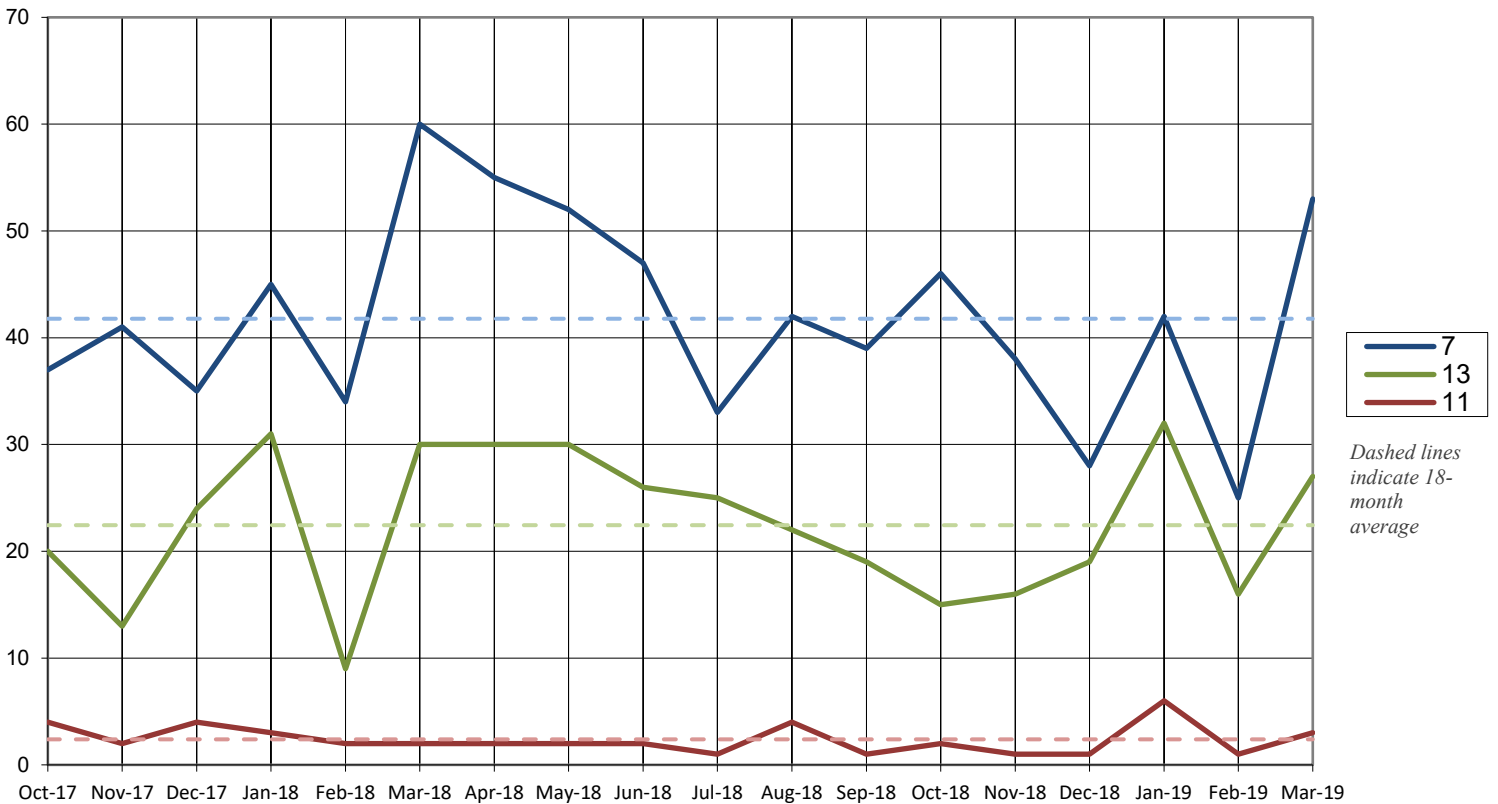
	Total	Pro Se
Ch. 7	47	20
Ch. 13	48	23
Ch. 11	7	1



Total Cases Filed per Year

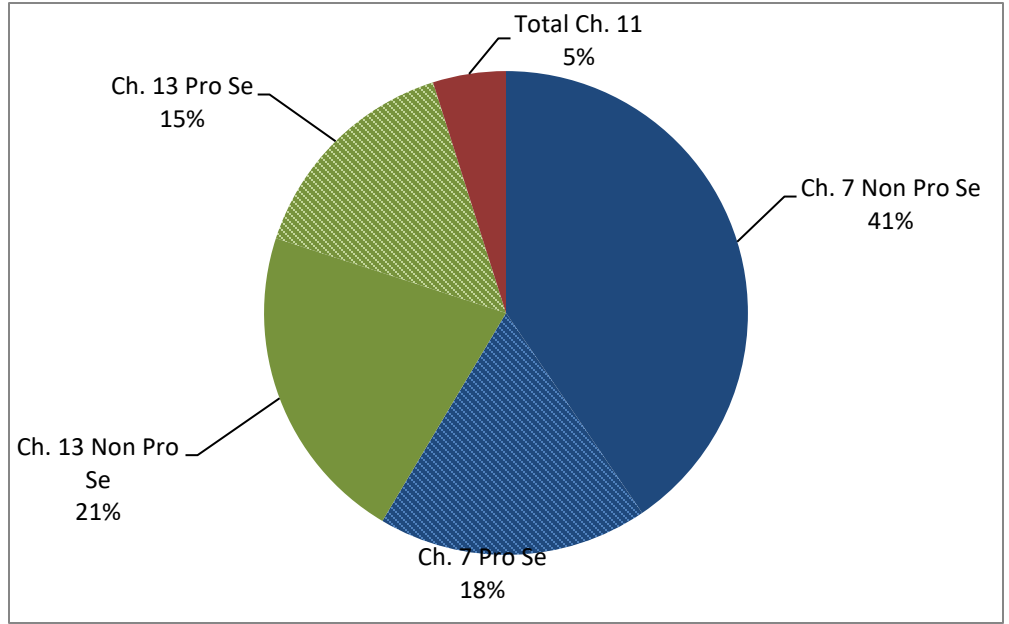


Cases Filed Per Month by Chapter - 18 months

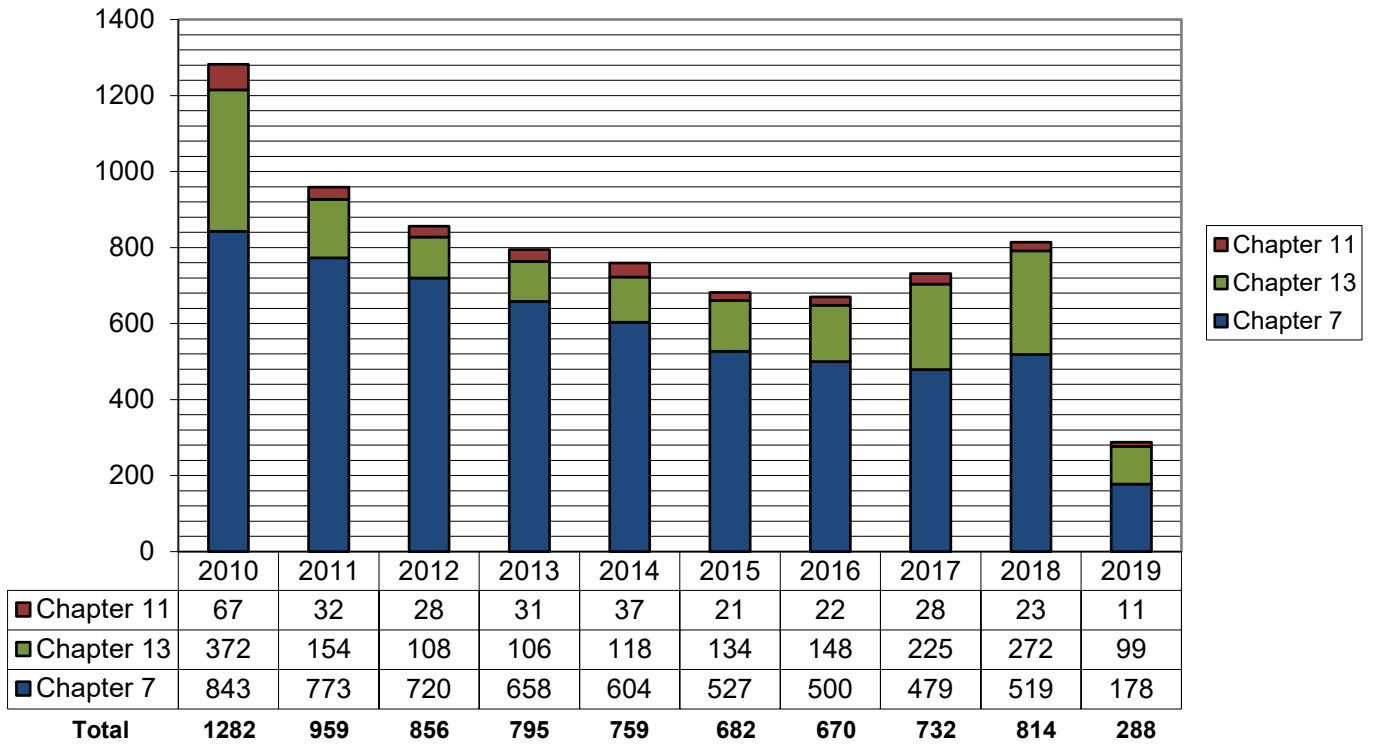


Pro Se Filings 2019

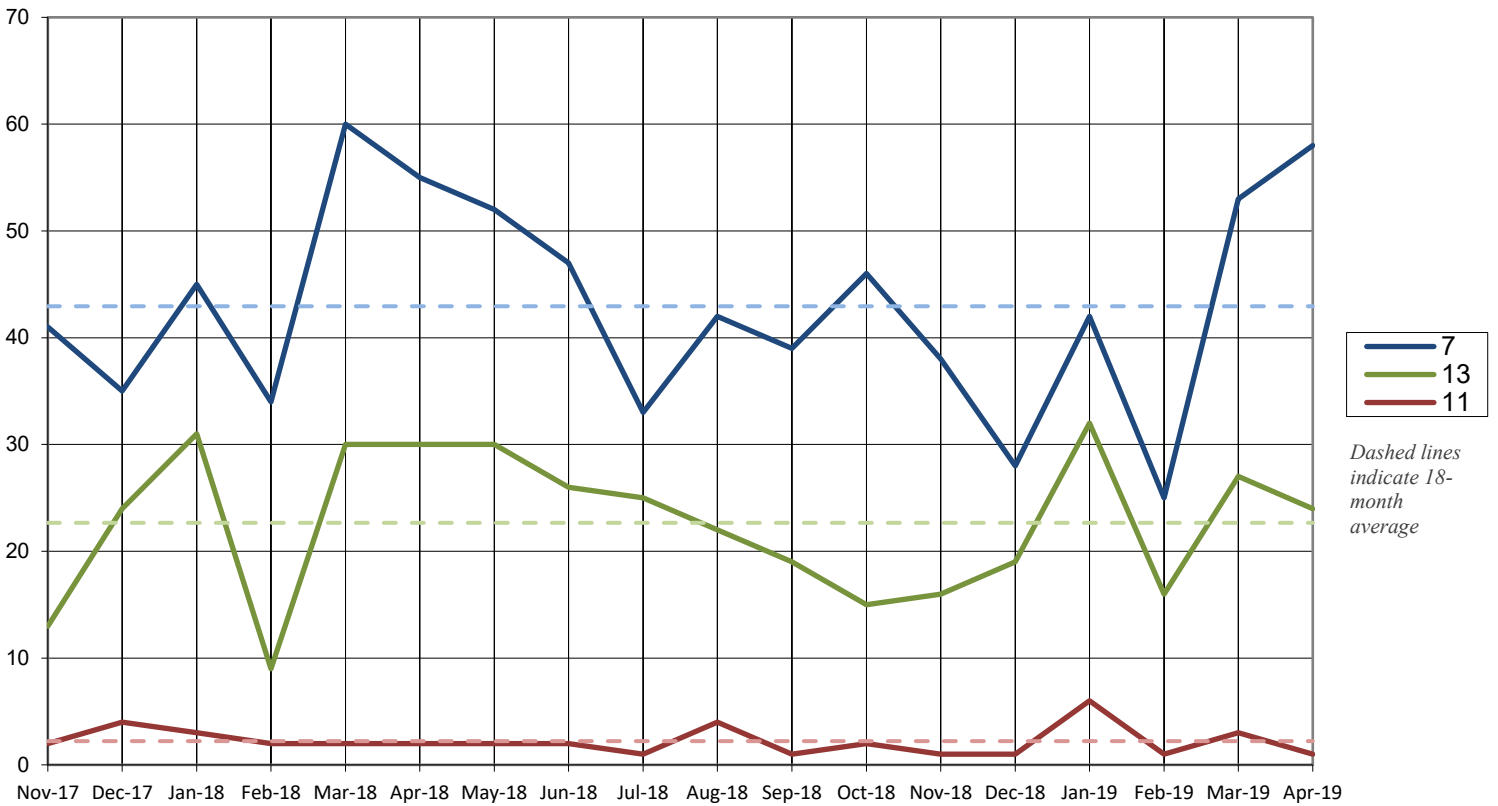
	Total	Pro Se
Ch. 7	120	37
Ch. 13	75	31
Ch. 11	10	1



Total Cases Filed per Year

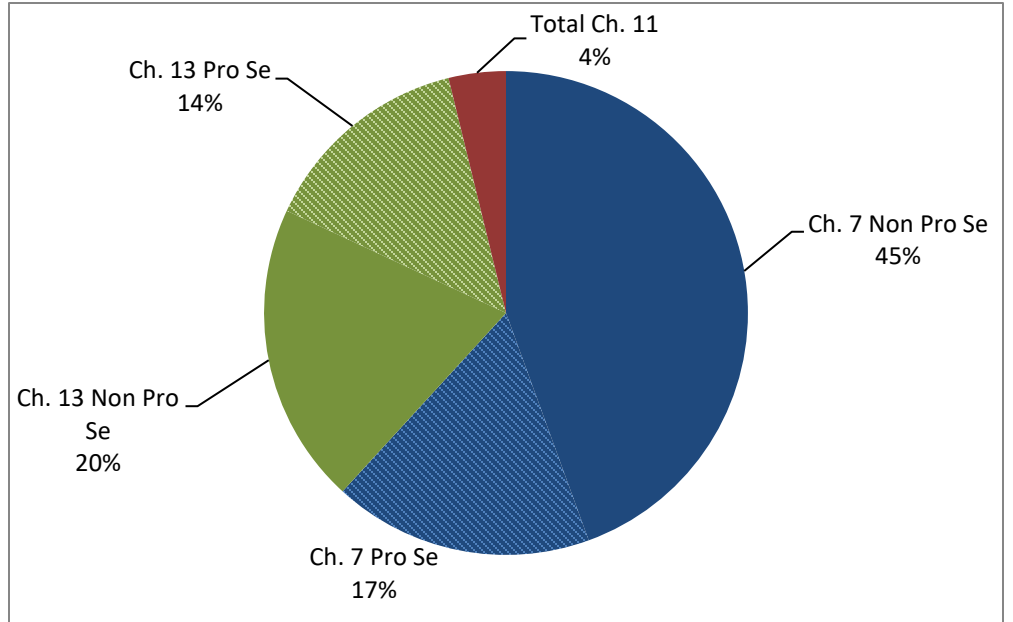


Cases Filed Per Month by Chapter - 18 months



Pro Se Filings 2019

	Total	Pro Se
Ch. 7	178	50
Ch. 13	99	41
Ch. 11	11	1



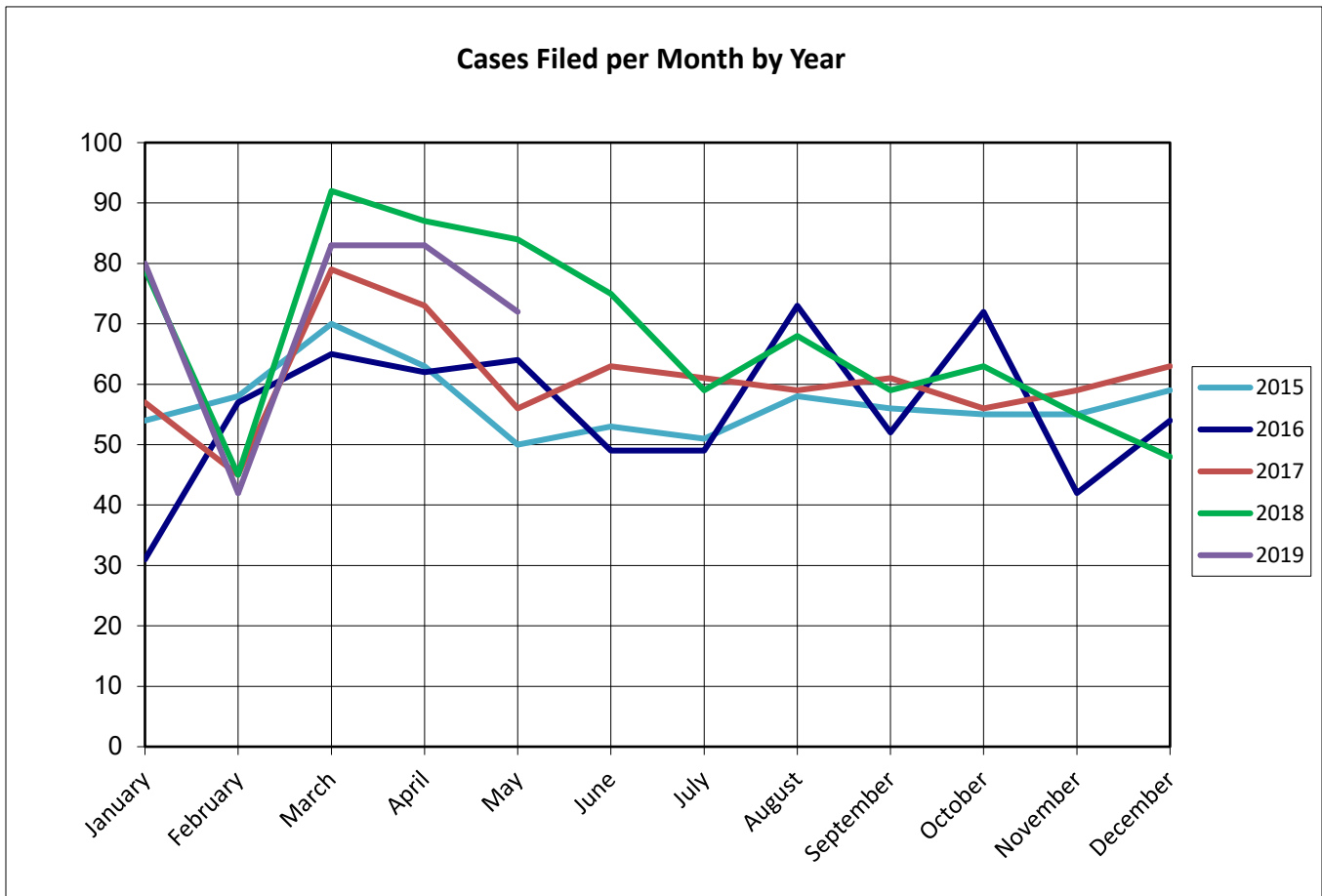
United States Bankruptcy Court for the District of Columbia

Report on Bankruptcy Case Filings May 2019

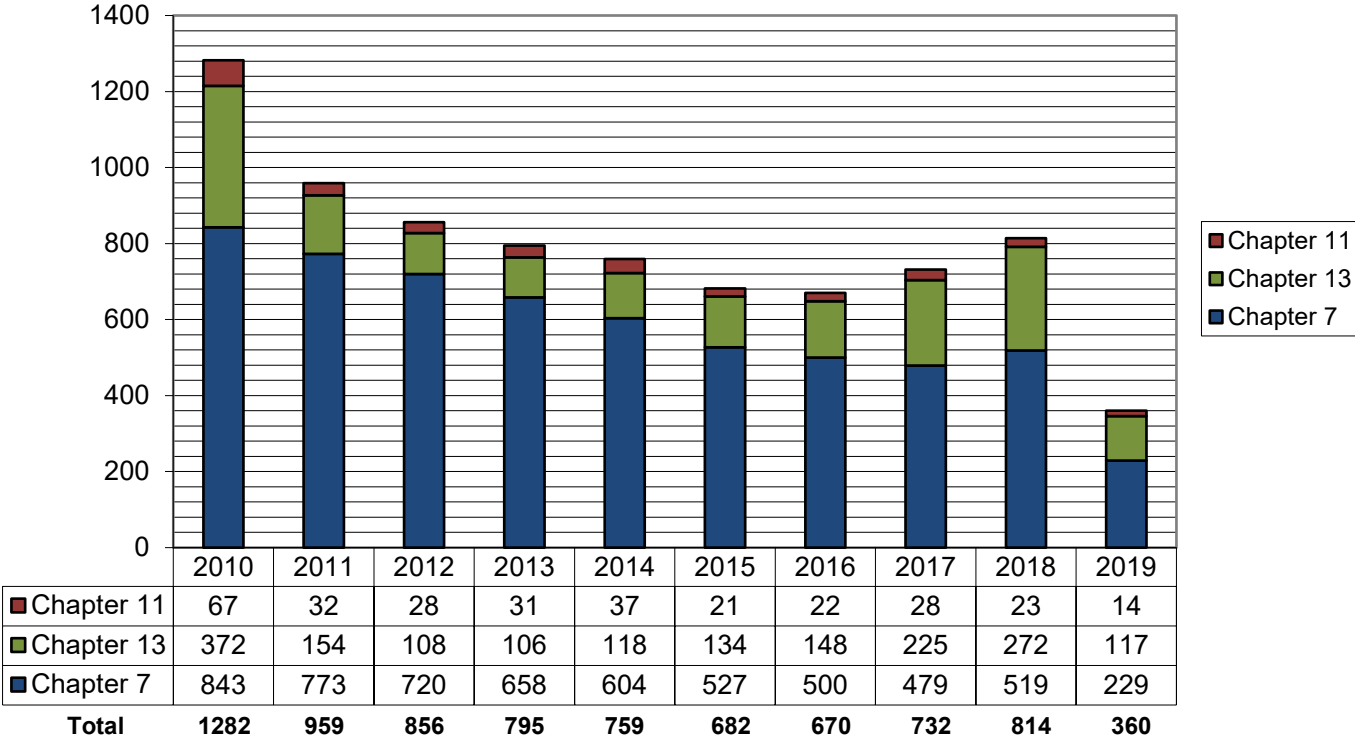
	Month Total	2019 Total	2018 YTD Total
Ch. 7	51	229	246 (-17)
Ch. 13	18	117	130 (-13)
Ch. 11	3	14	11 (+3)
	83	360	387 (-27)

As of May 31, 2019:

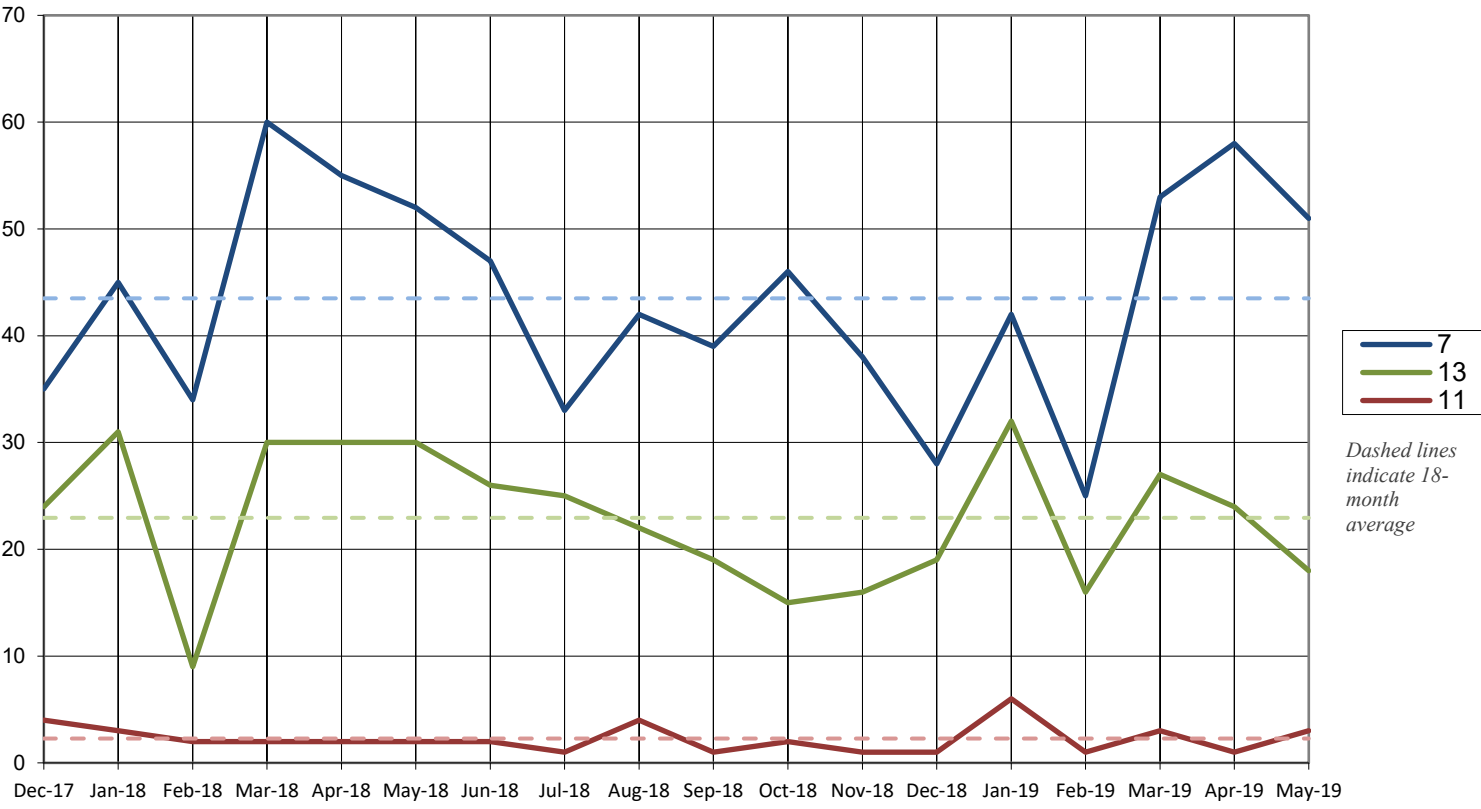
- ◆ The projected total of cases for 2019 is **870**
- ◆ Compared to 2018, filings decreased by **7%**
- ◆ An average of **2.0** cases were filed each day



Total Cases Filed per Year

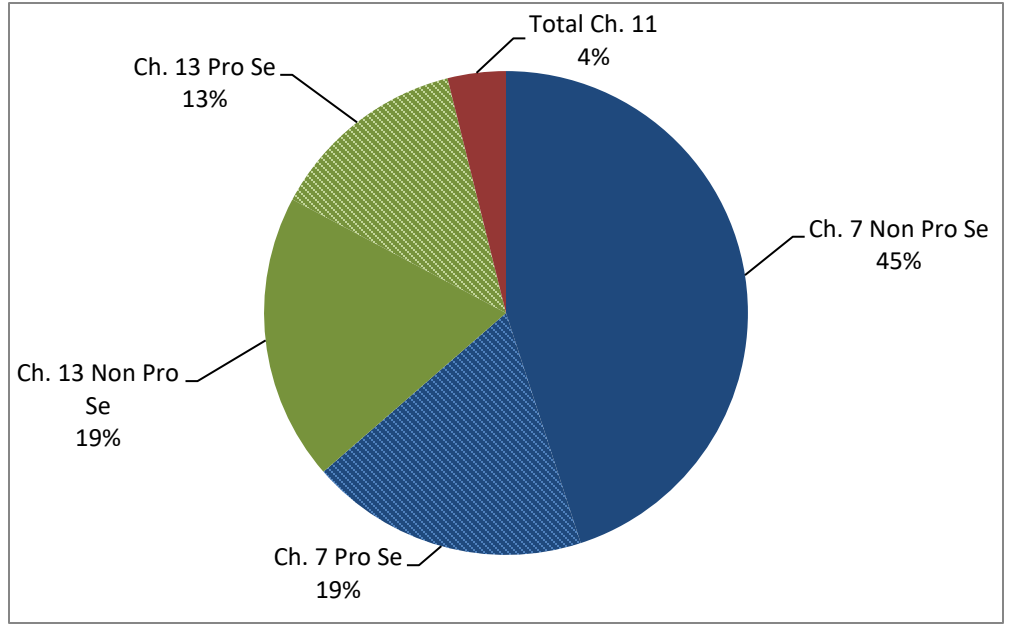


Cases Filed Per Month by Chapter - 18 months



Pro Se Filings 2019

	Total	Pro Se
Ch. 7	229	67
Ch. 13	117	48
Ch. 11	14	2



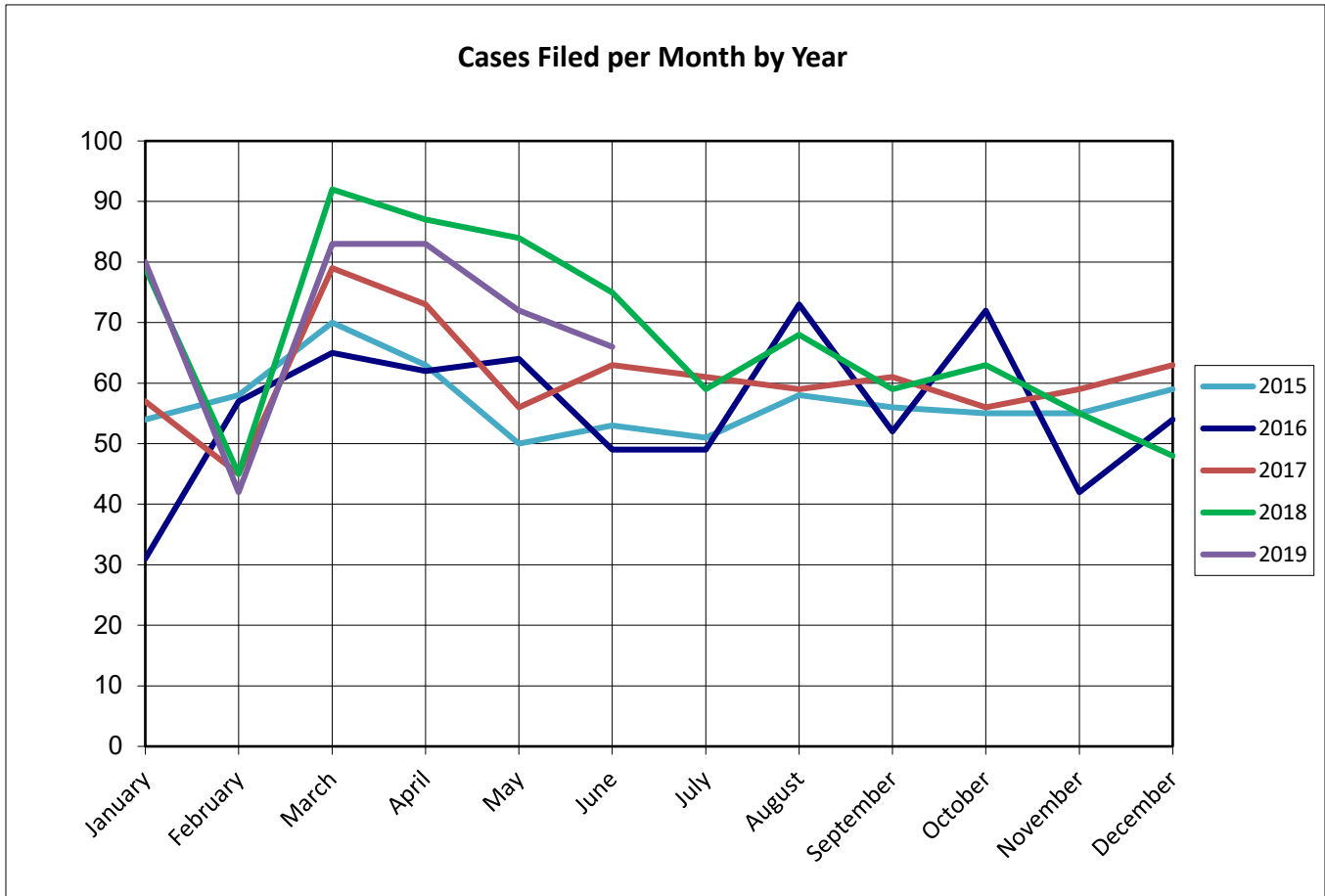
United States Bankruptcy Court for the District of Columbia

Report on Bankruptcy Case Filings June 2019

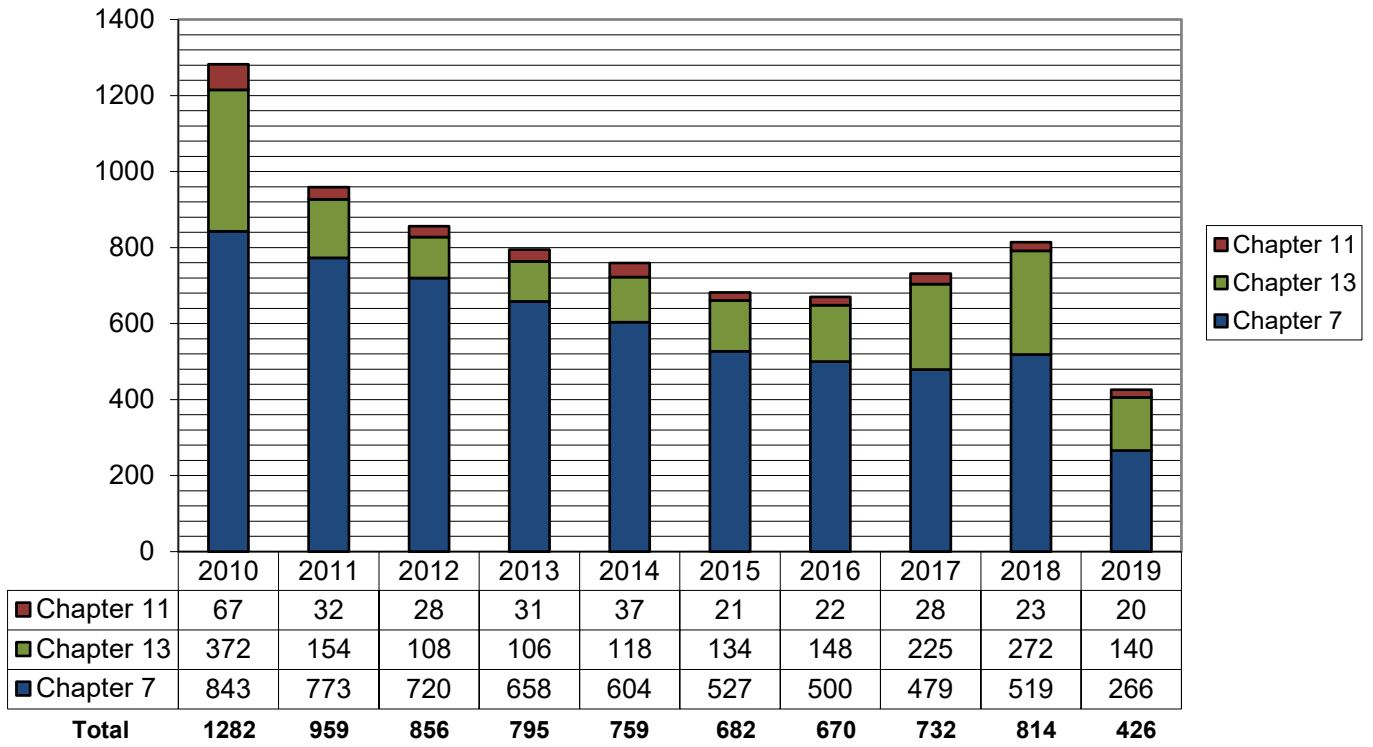
	Month Total	2019 Total	2018 YTD Total
Ch. 7	37	266	293 (-27)
Ch. 13	23	140	156 (-16)
Ch. 11	6	20	13 (+7)
	66	426	462 (-36)

As of June 30, 2019:

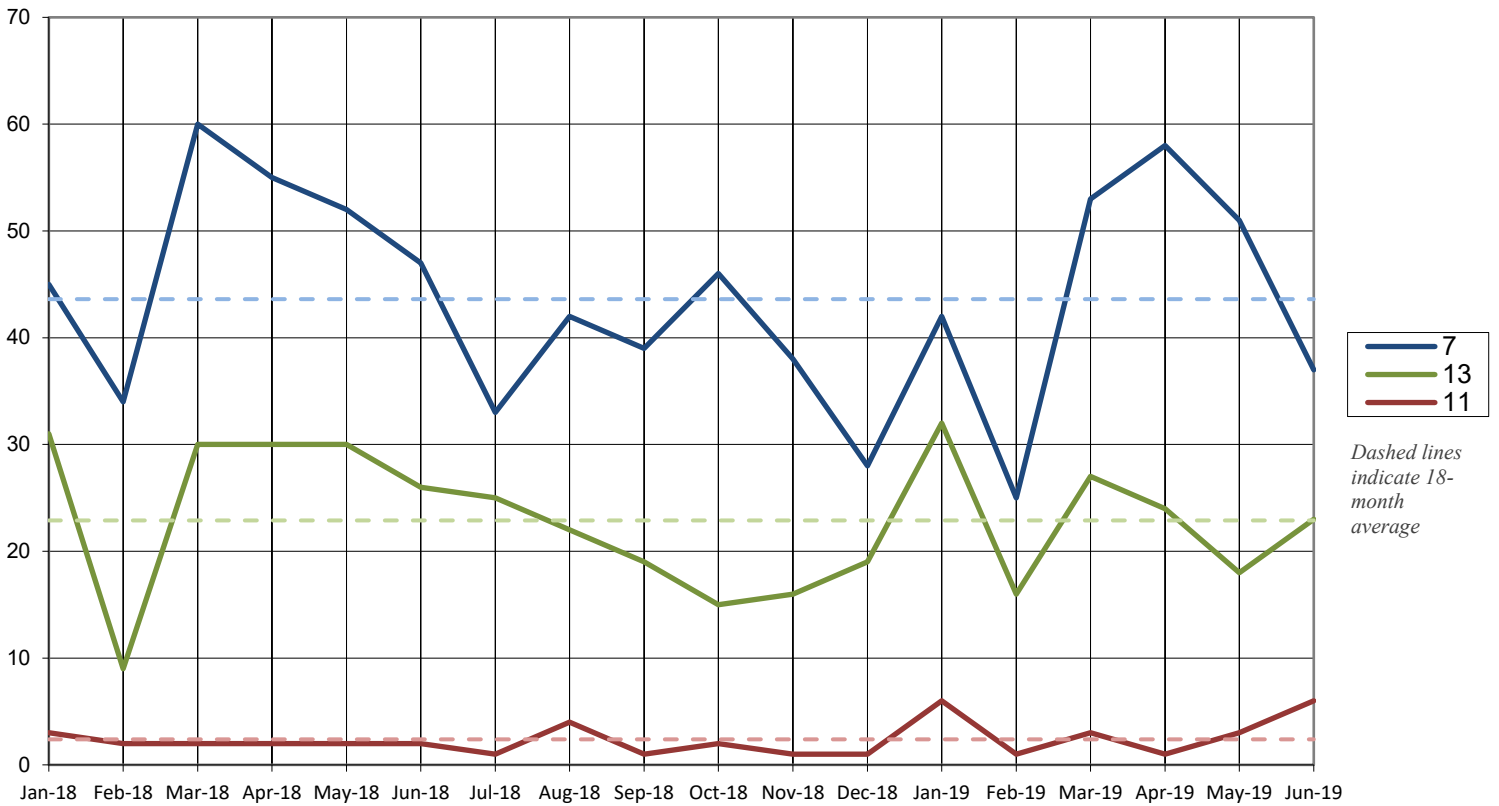
- ◆ The projected total of cases for 2019 is **859**
- ◆ Compared to 2018, filings decreased by **7.8%**
- ◆ An average of **2.4** cases were filed each day



Total Cases Filed per Year

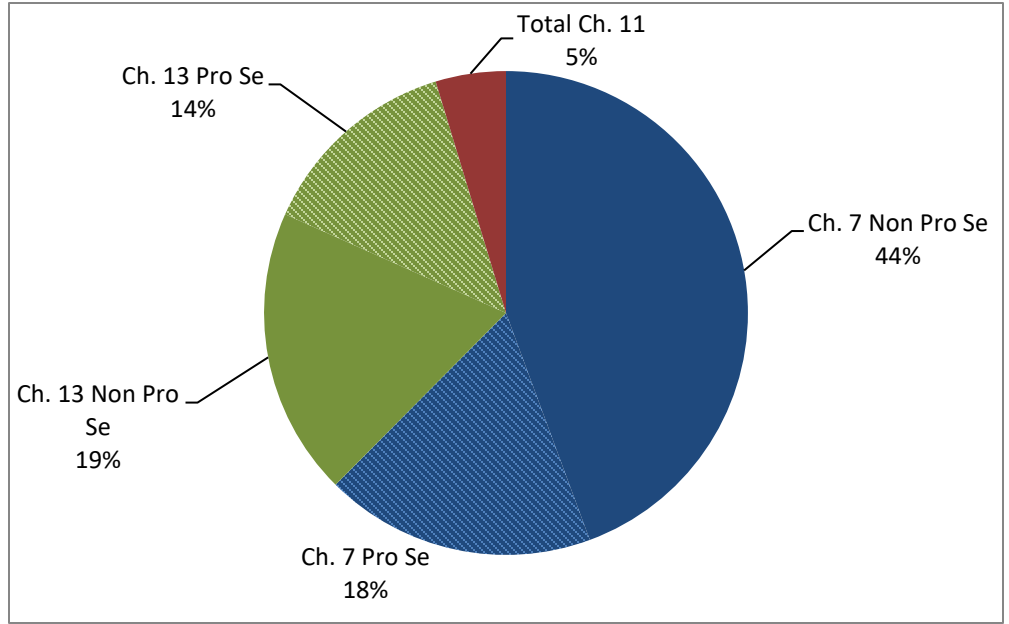


Cases Filed Per Month by Chapter - 18 months



Pro Se Filings 2019

	Total	Pro Se
Ch. 7	266	77
Ch. 13	140	58
Ch. 11	20	2



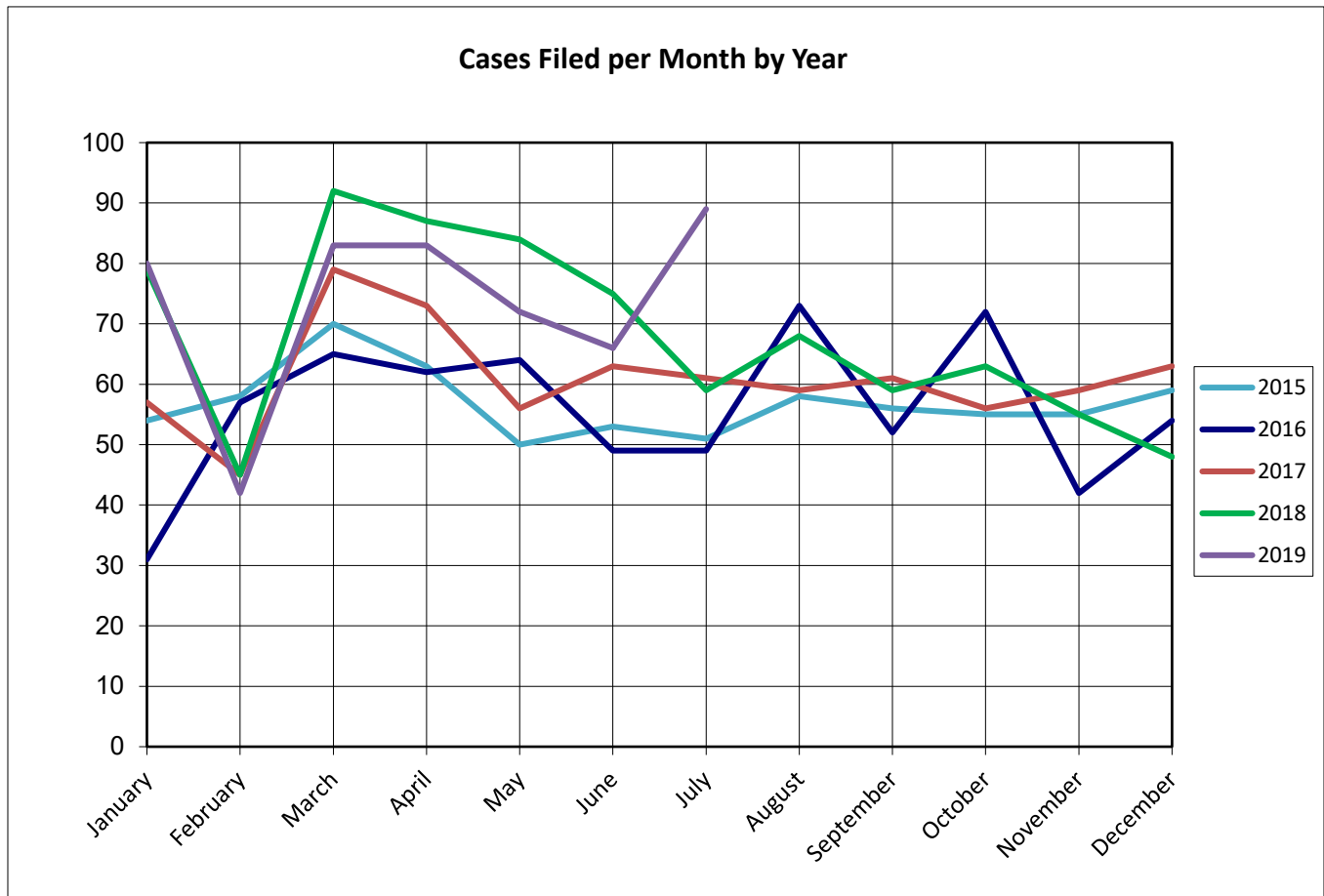
United States Bankruptcy Court for the District of Columbia

Report on Bankruptcy Case Filings July 2019

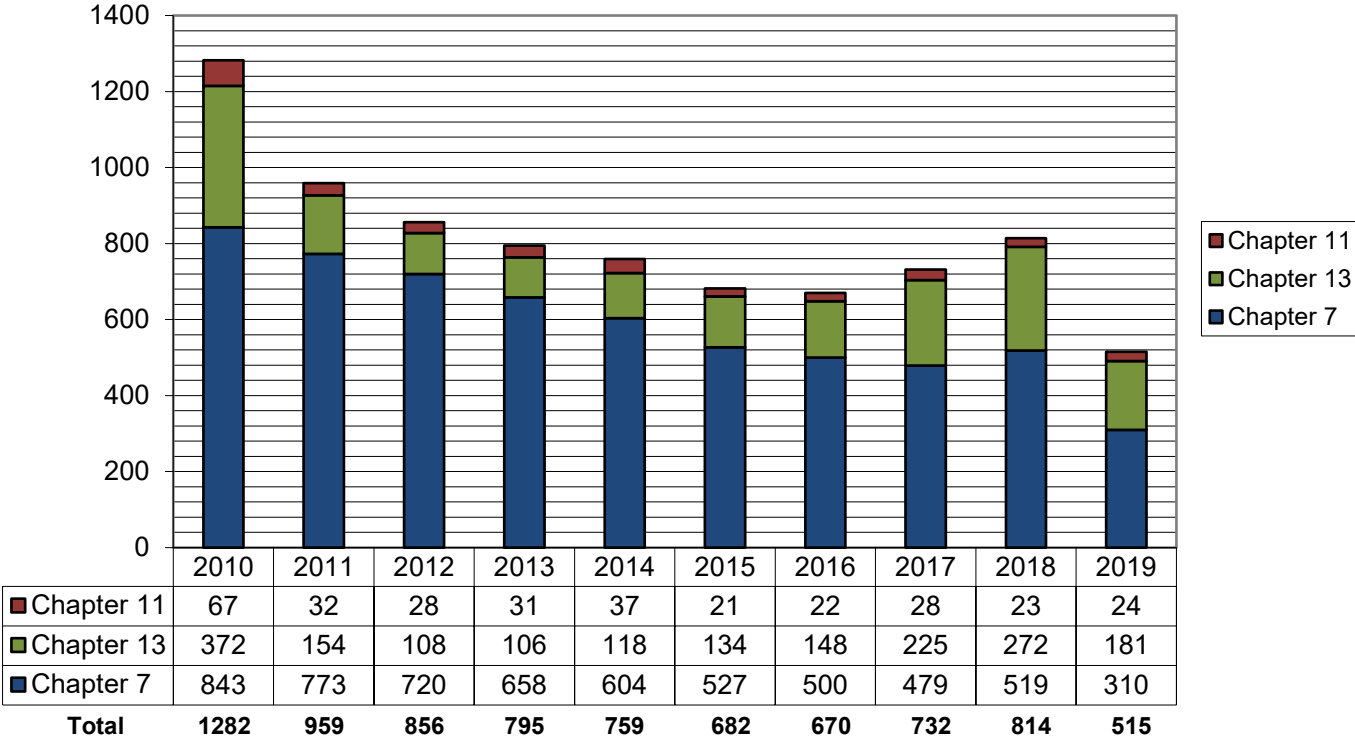
	Month Total	2019 Total	2018 YTD Total
Ch. 7	44	310	326 (-16)
Ch. 13	41	181	181 (-0)
Ch. 11	4	24	14 (+10)
	89	515	521 (-6)

As of July 31, 2019:

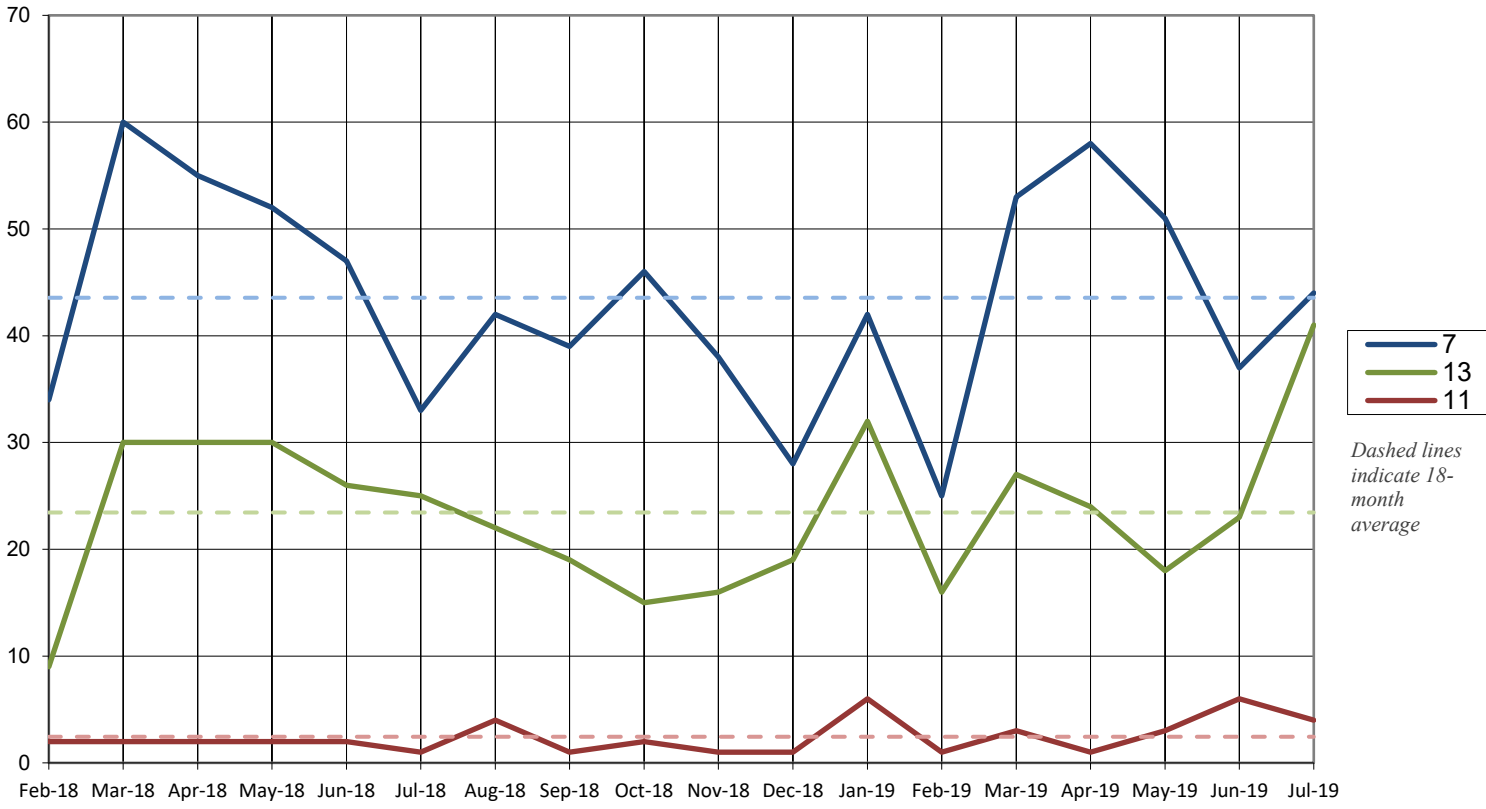
- ◆ The projected total of cases for 2019 is **887**
- ◆ Compared to 2018, filings decreased by **1.2%**
- ◆ An average of **2.4** cases were filed each day



Total Cases Filed per Year

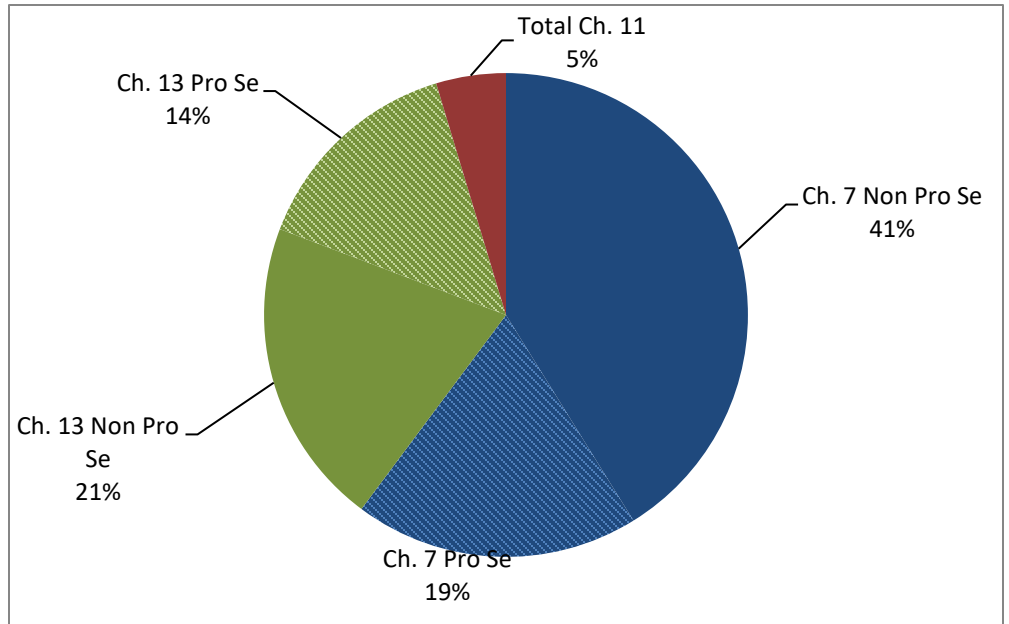


Cases Filed Per Month by Chapter - 18 months



Pro Se Filings 2019

	Total	Pro Se
Ch. 7	310	98
Ch. 13	181	75
Ch. 11	24	3



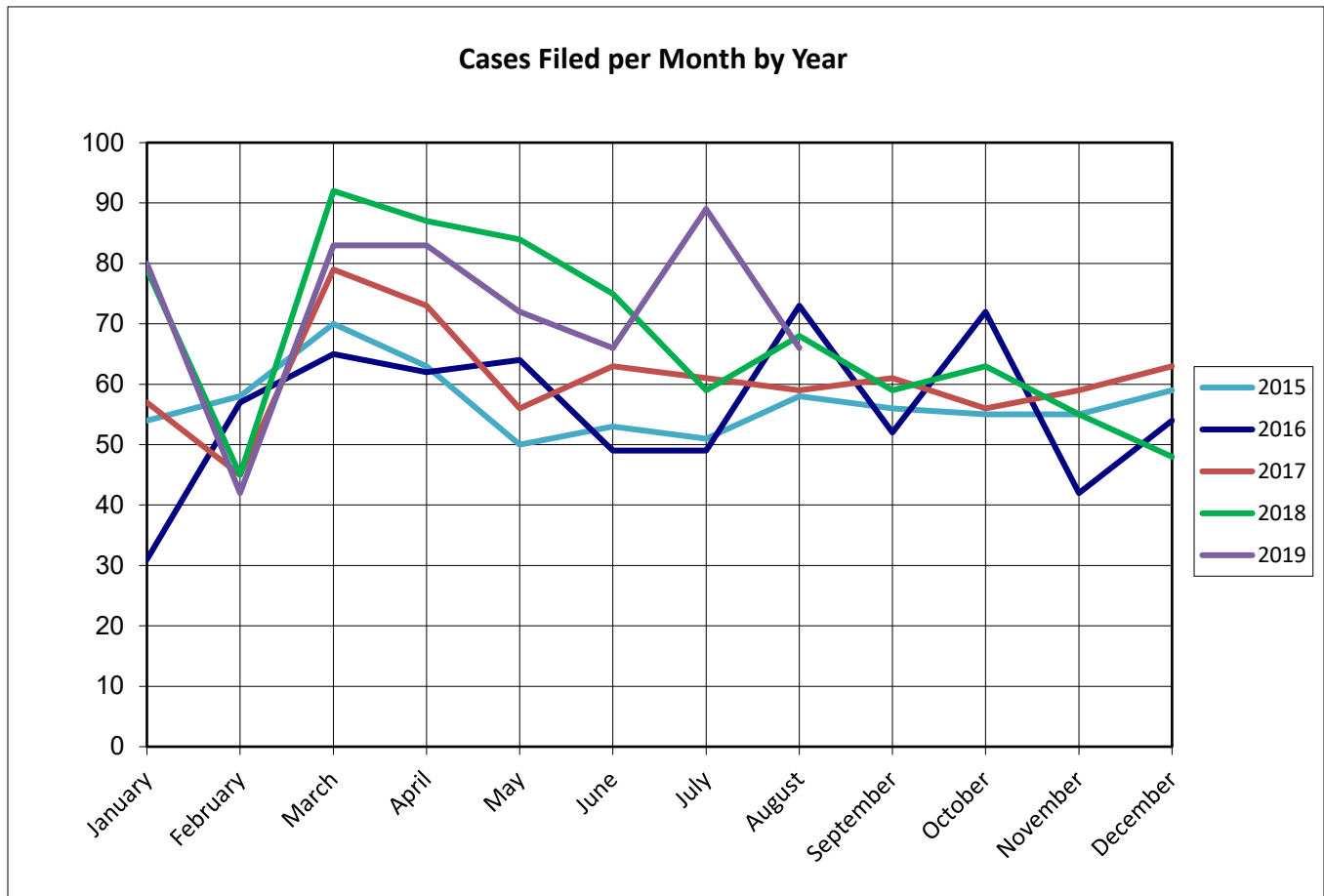
United States Bankruptcy Court for the District of Columbia

Report on Bankruptcy Case Filings August 2019

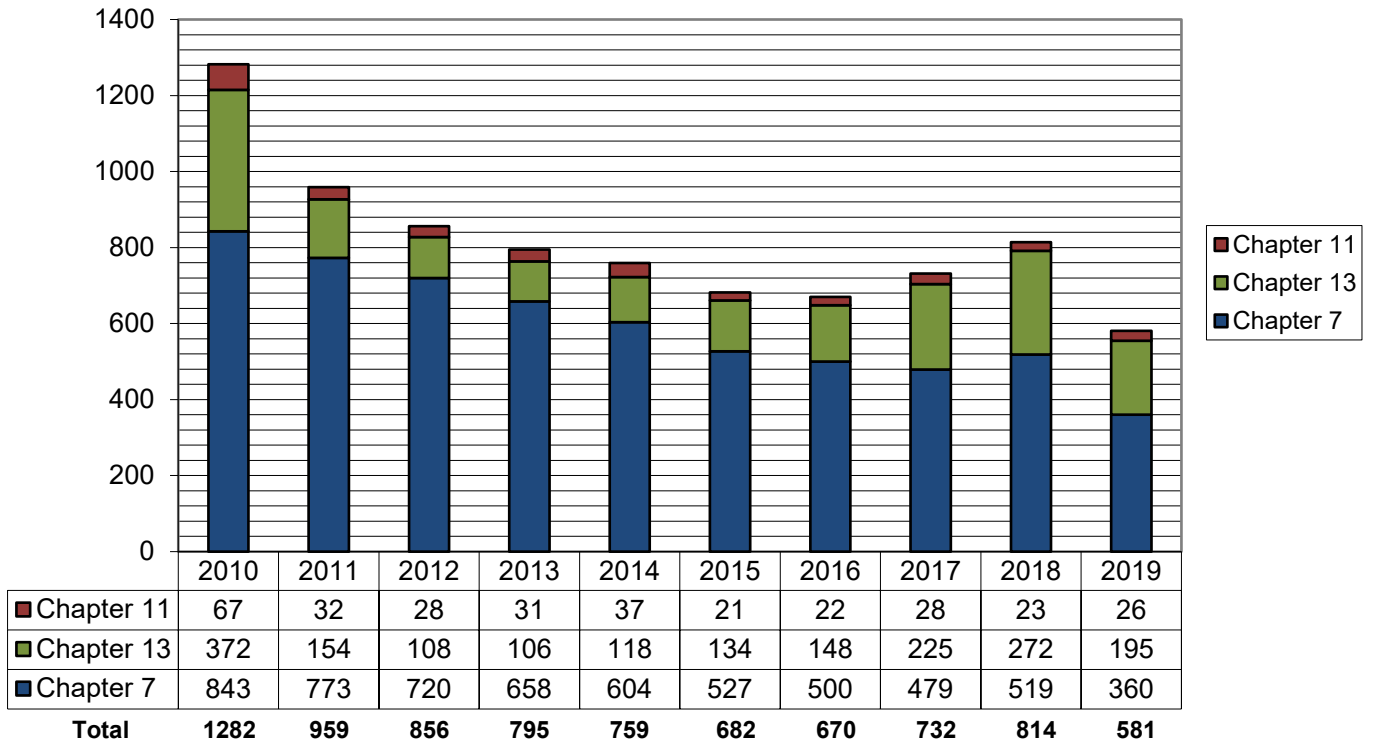
	Month Total	2019 Total	2018 YTD Total
Ch. 7	50	360	368 (-8)
Ch. 13	14	195	203 (-8)
Ch. 11	2	26	18 (+8)
	66	581	589 (-8)

As of August 31, 2019:

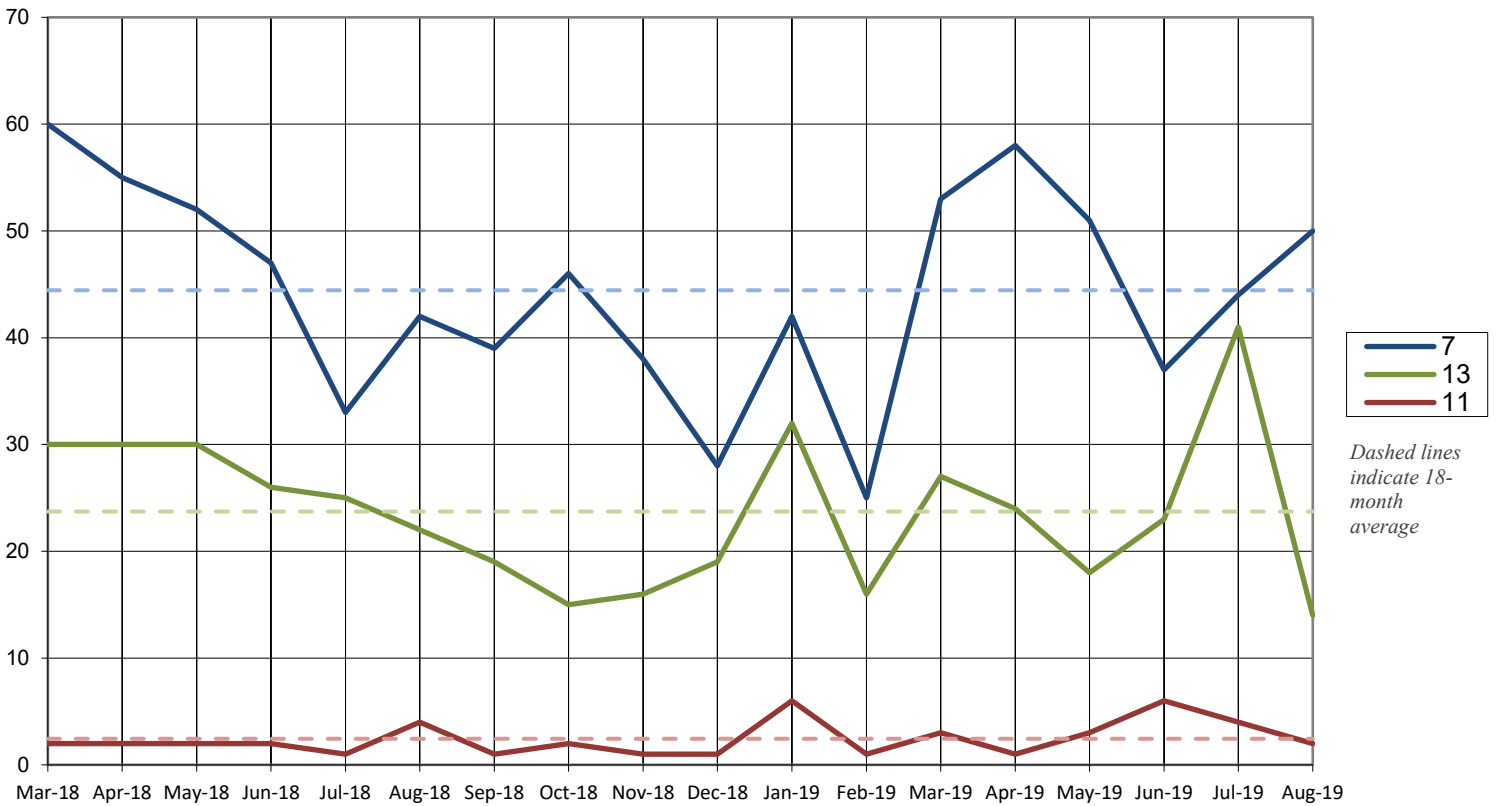
- ◆ The projected total of cases for 2019 is **873**
- ◆ Compared to 2018, filings decreased by **1.4%**
- ◆ An average of **2.4** cases were filed each day



Total Cases Filed per Year

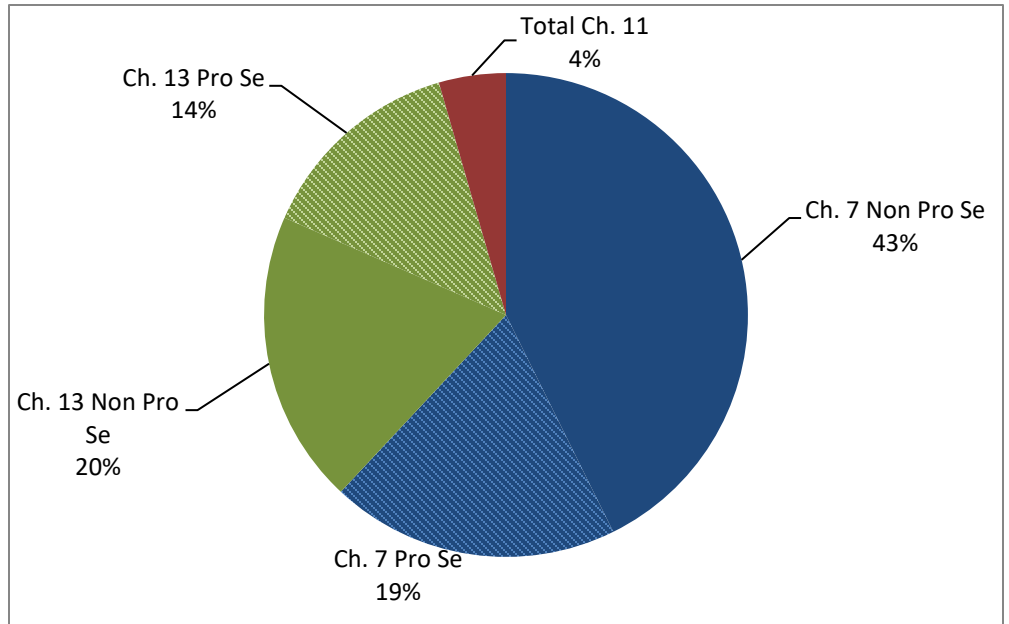


Cases Filed Per Month by Chapter - 18 months



Pro Se Filings 2019

	Total	Pro Se
Ch. 7	360	112
Ch. 13	195	81
Ch. 11	26	3



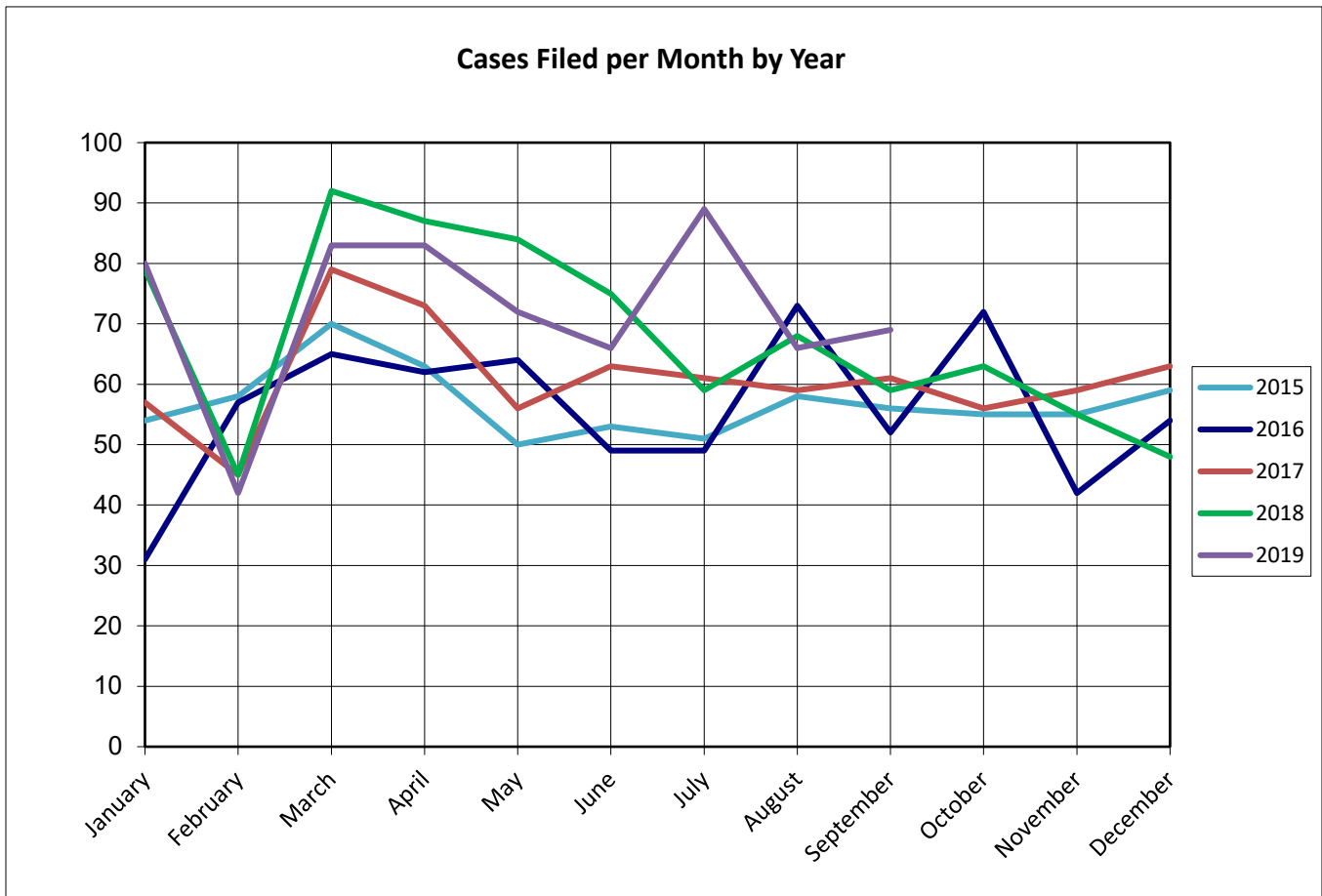
United States Bankruptcy Court for the District of Columbia

Report on Bankruptcy Case Filings September 2019

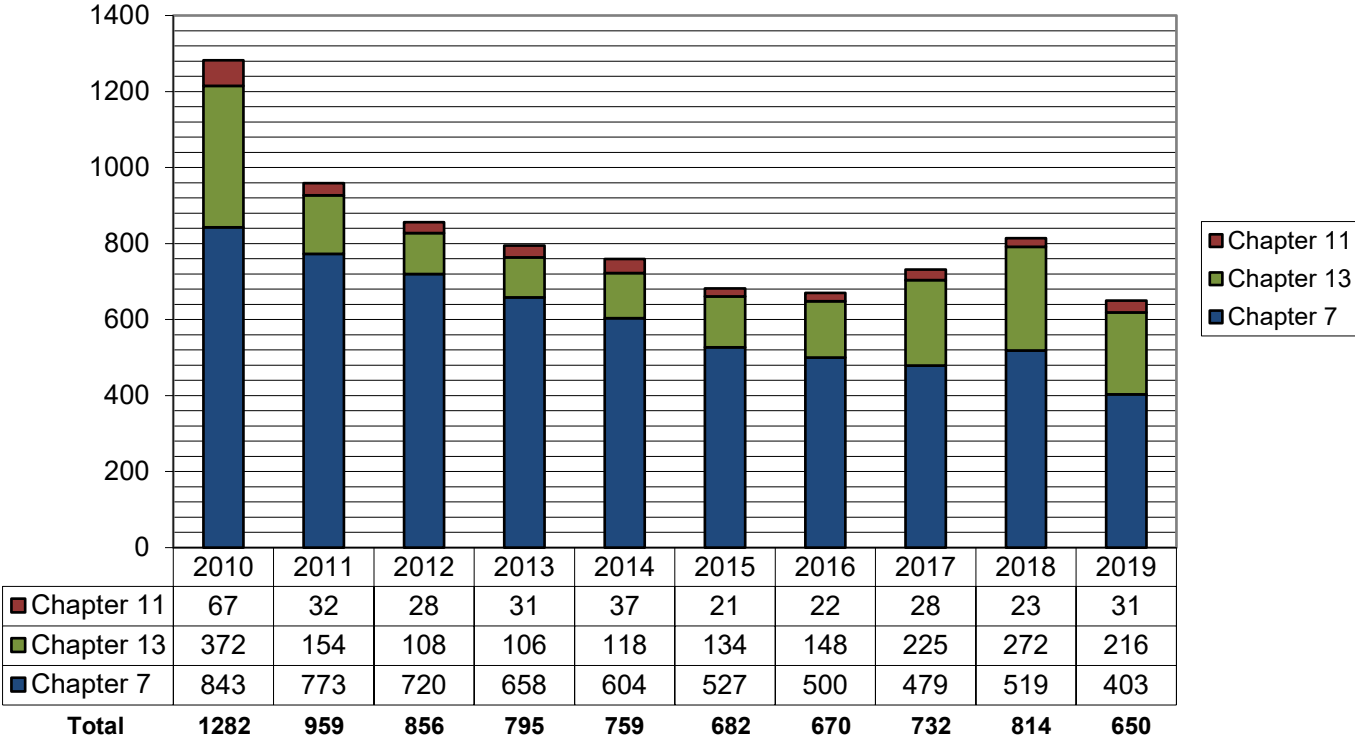
	Month Total	2019 Total	2018 YTD Total
Ch. 7	43	403	407 (-4)
Ch. 13	21	216	222 (-6)
Ch. 11	5	31	19 (+12)
	69	650	648 (+2)

As of September 30, 2019:

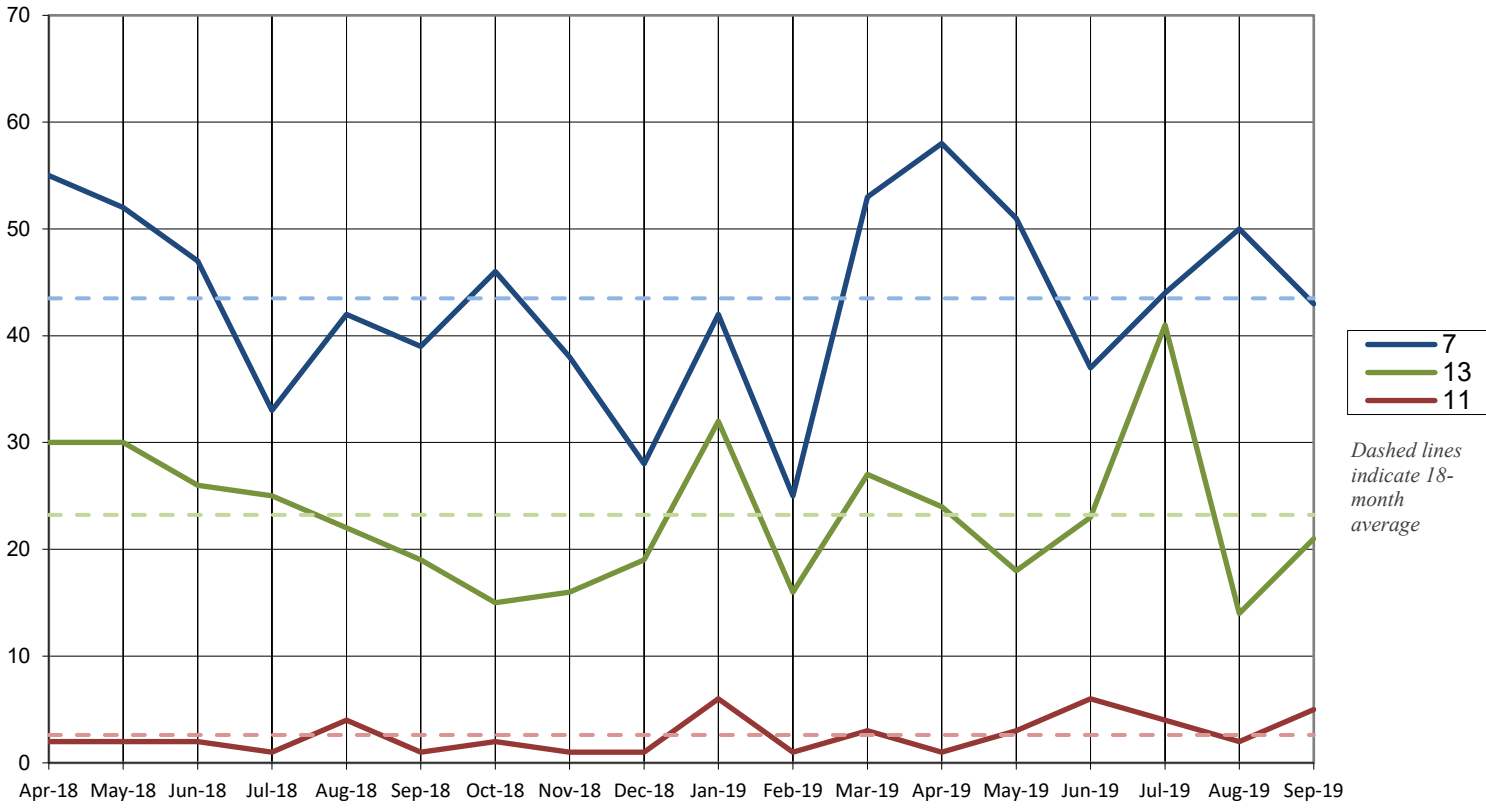
- ◆ The projected total of cases for 2019 is **869**
- ◆ Compared to 2018, filings decreased by **0.3%**
- ◆ An average of **2.4** cases were filed each day



Total Cases Filed per Year

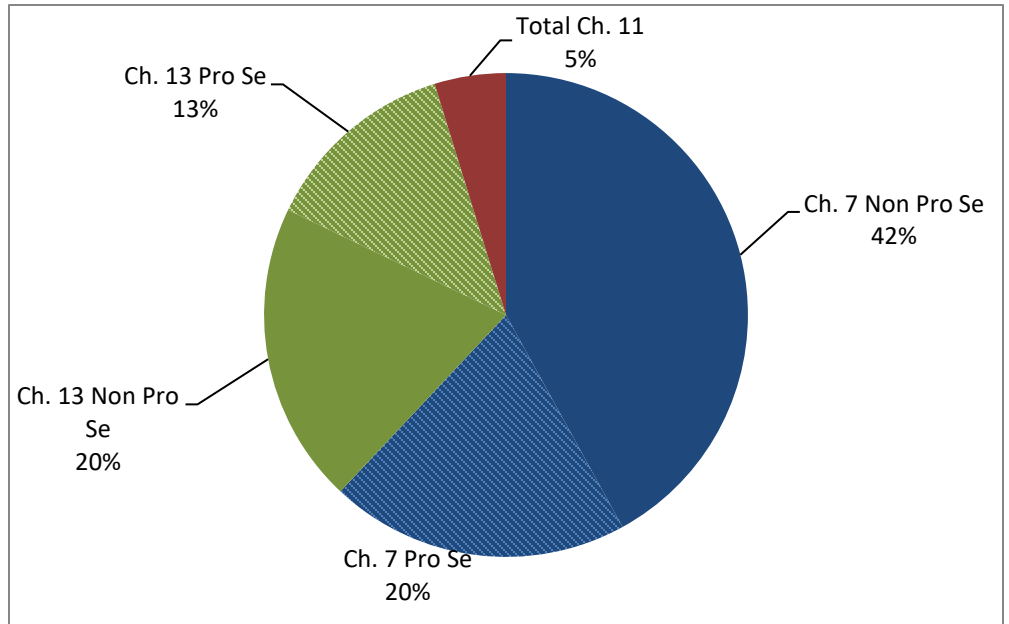


Cases Filed Per Month by Chapter - 18 months



Pro Se Filings 2019

	Total	Pro Se
Ch. 7	403	130
Ch. 13	216	85
Ch. 11	31	3



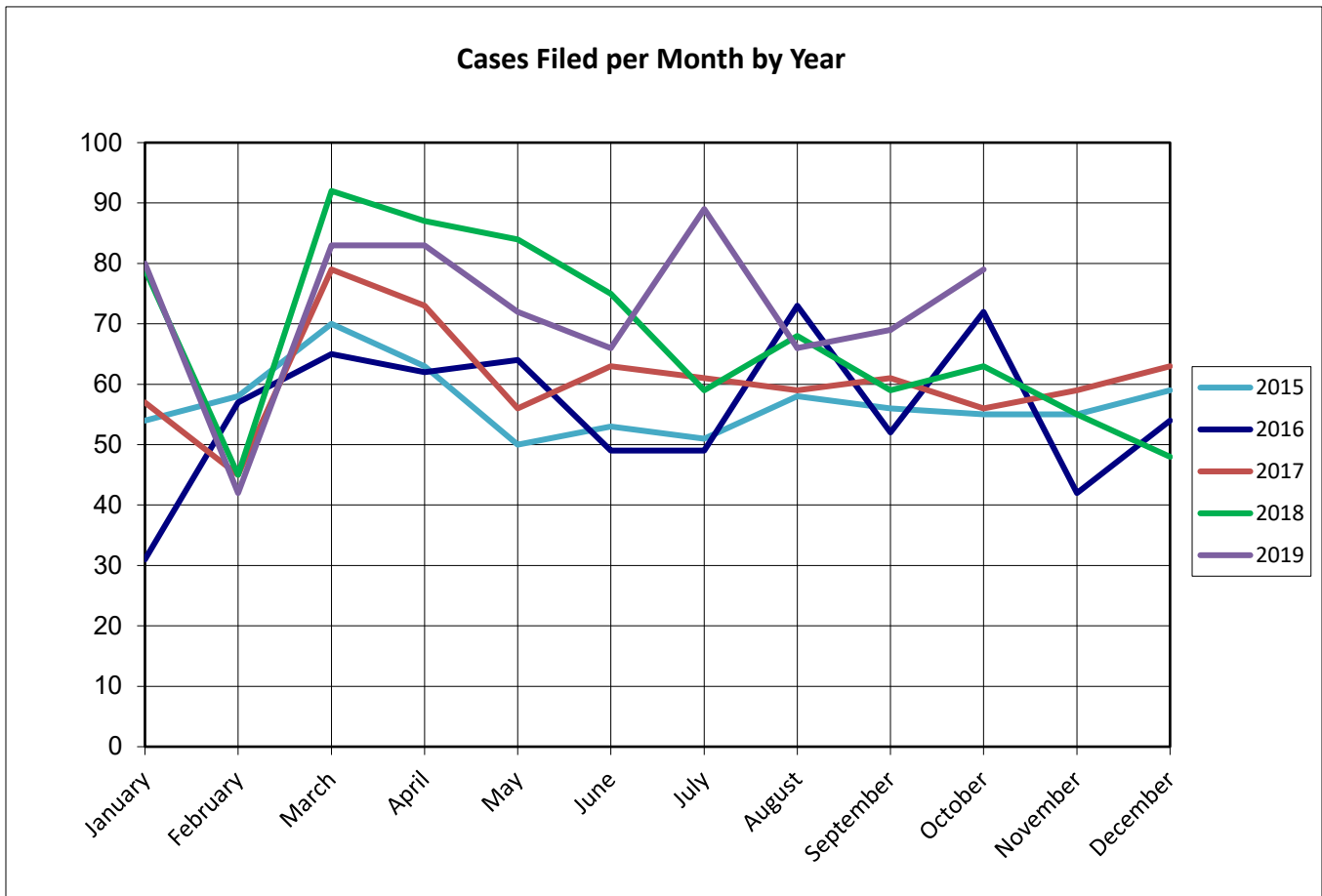
United States Bankruptcy Court for the District of Columbia

Report on Bankruptcy Case Filings October 2019

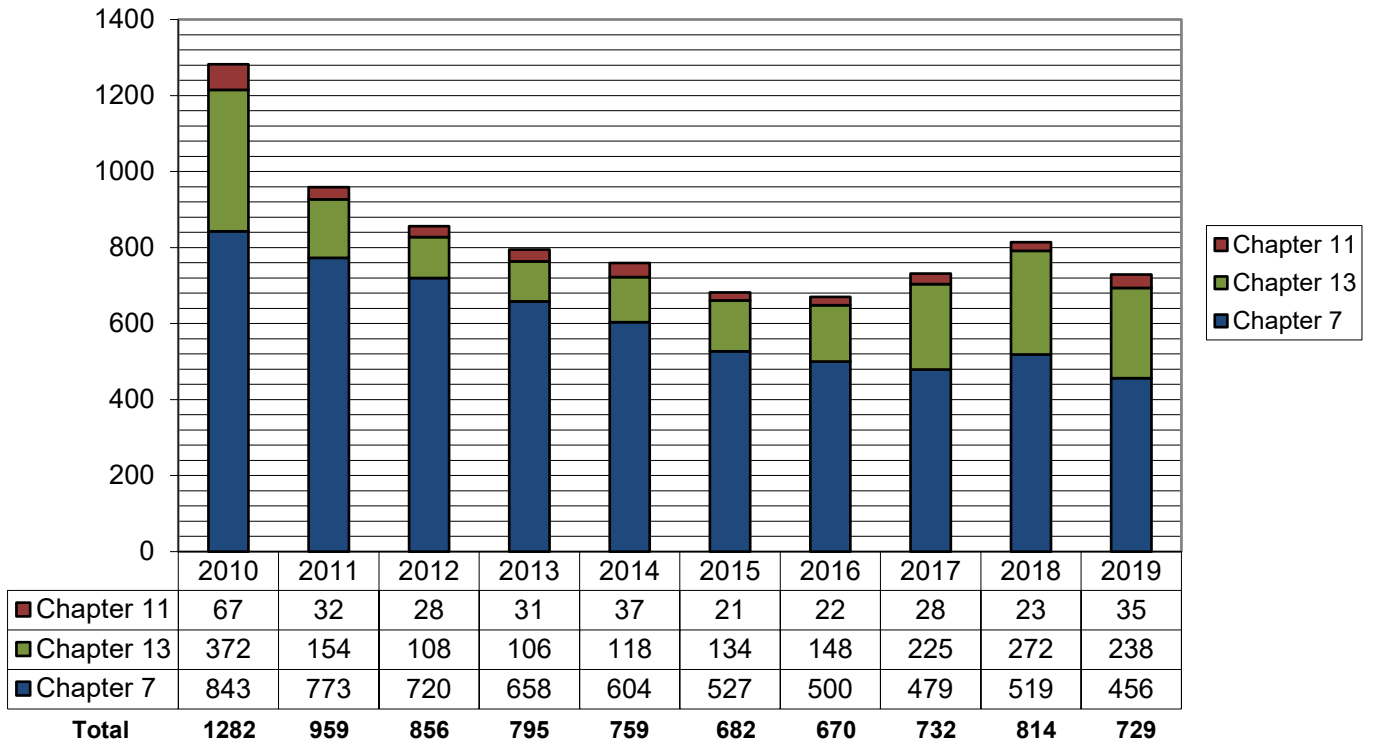
	Month Total	2019 Total	2018 YTD Total
Ch. 7	53	456	453 (+3)
Ch. 13	22	238	237 (+1)
Ch. 11	4	35	21 (+14)
	79	729	711 (+18)

As of October 31, 2019:

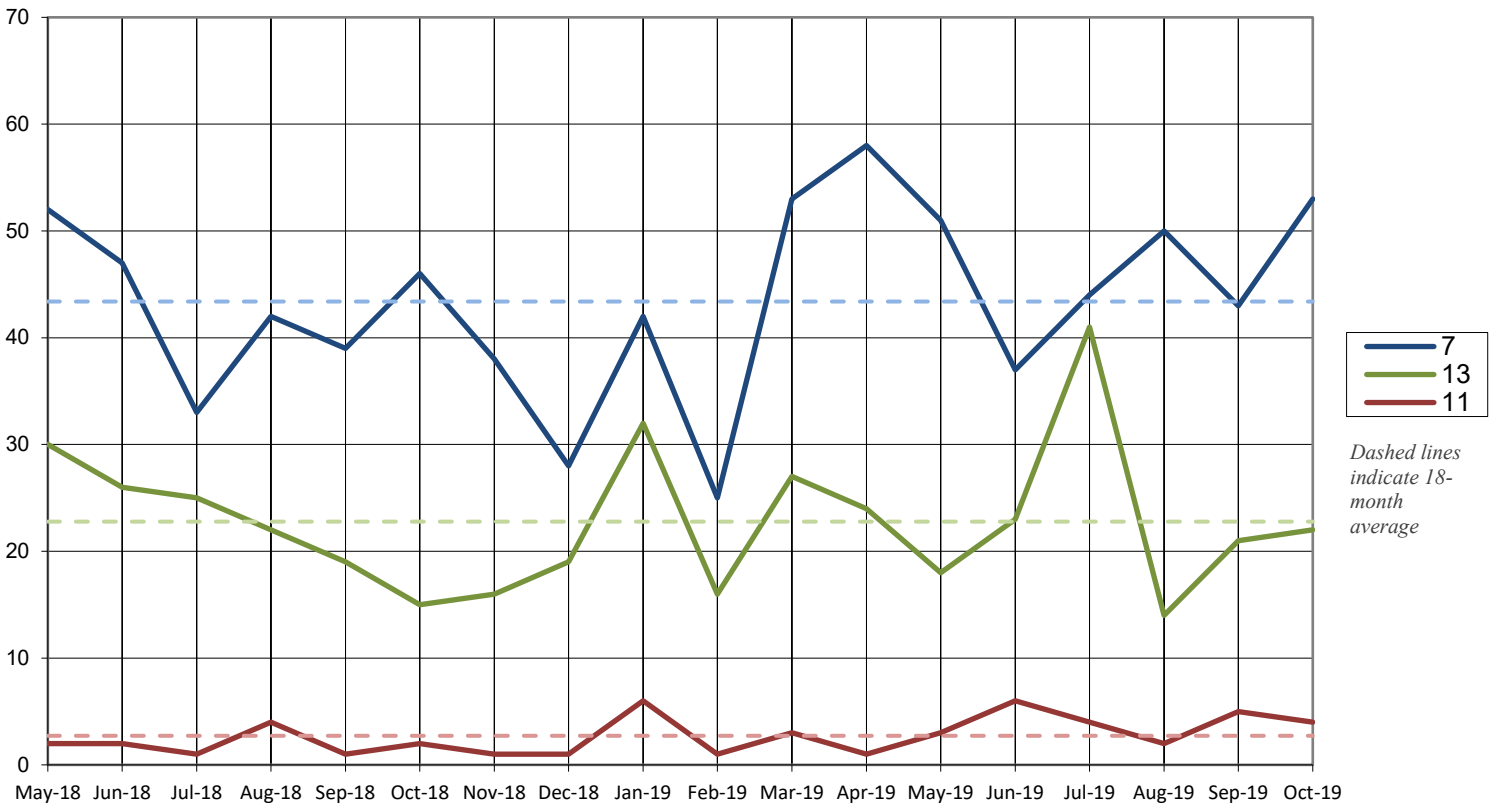
- ◆ The projected total of cases for 2019 is **875**
- ◆ Compared to 2018, filings increased by **2.5%**
- ◆ An average of **2.4** cases were filed each day



Total Cases Filed per Year

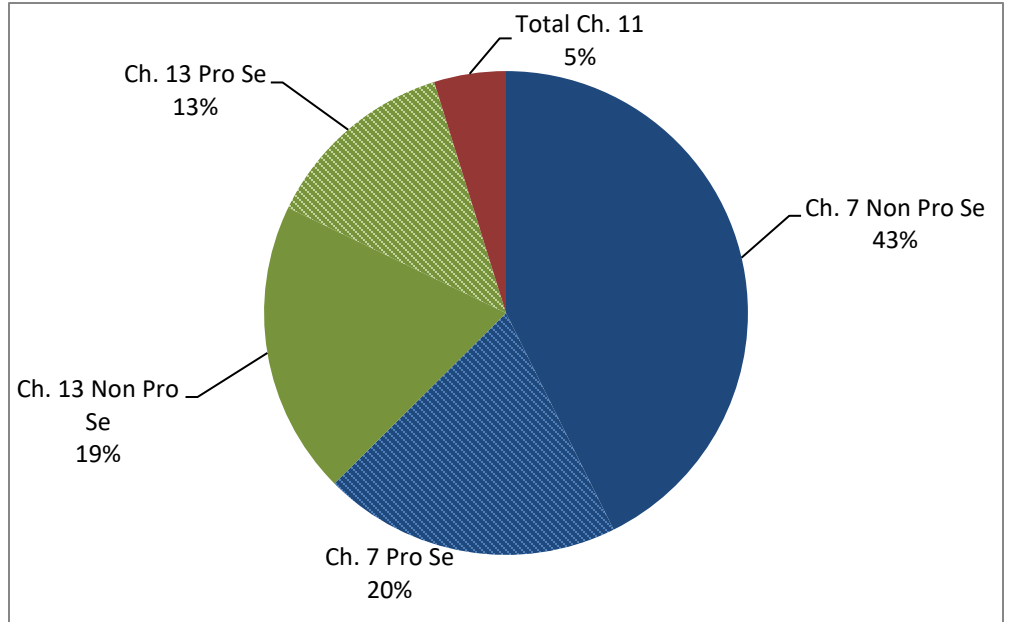


Cases Filed Per Month by Chapter - 18 months



Pro Se Filings 2019

	Total	Pro Se
Ch. 7	456	145
Ch. 13	238	95
Ch. 11	35	5



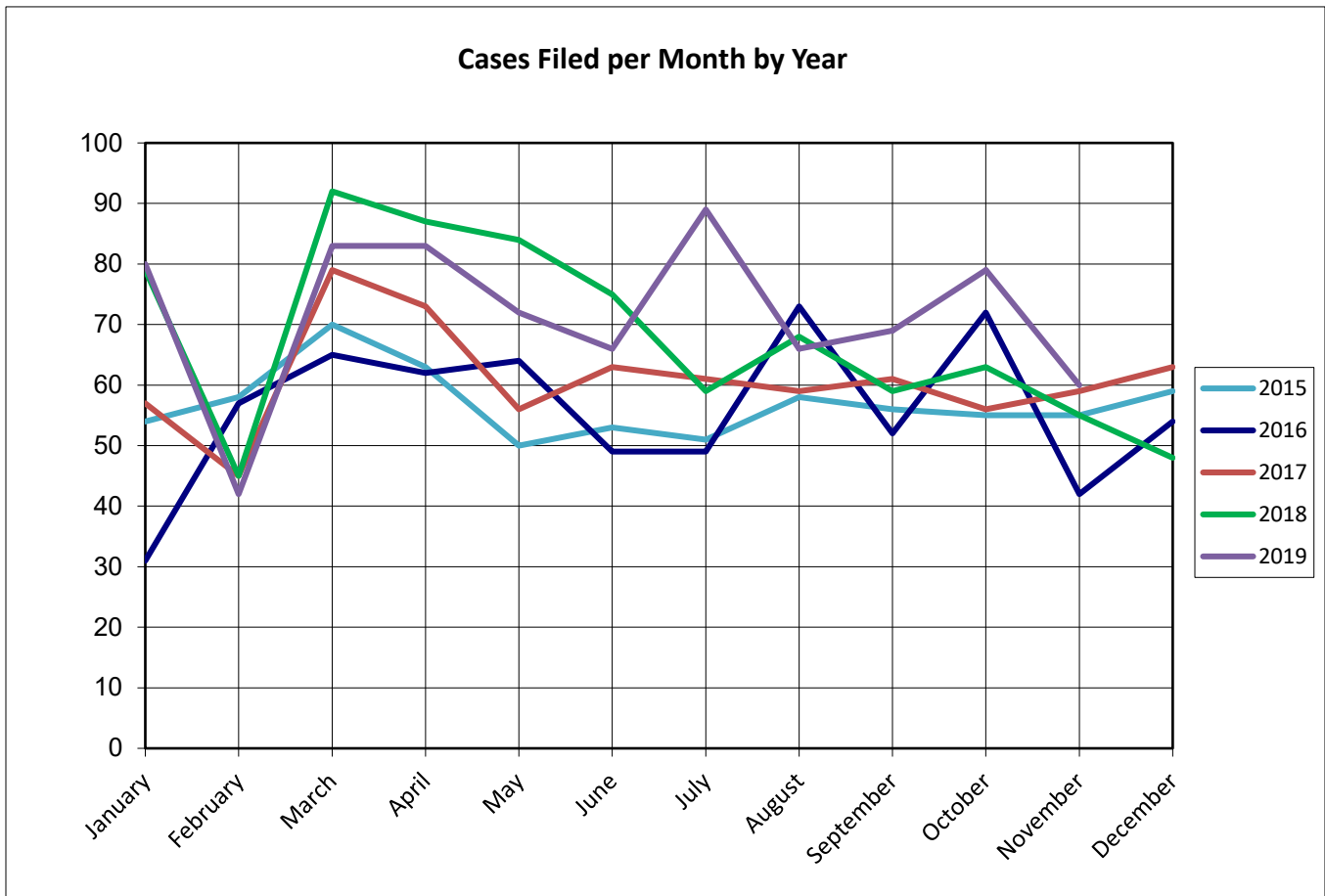
United States Bankruptcy Court for the District of Columbia

Report on Bankruptcy Case Filings November 2019

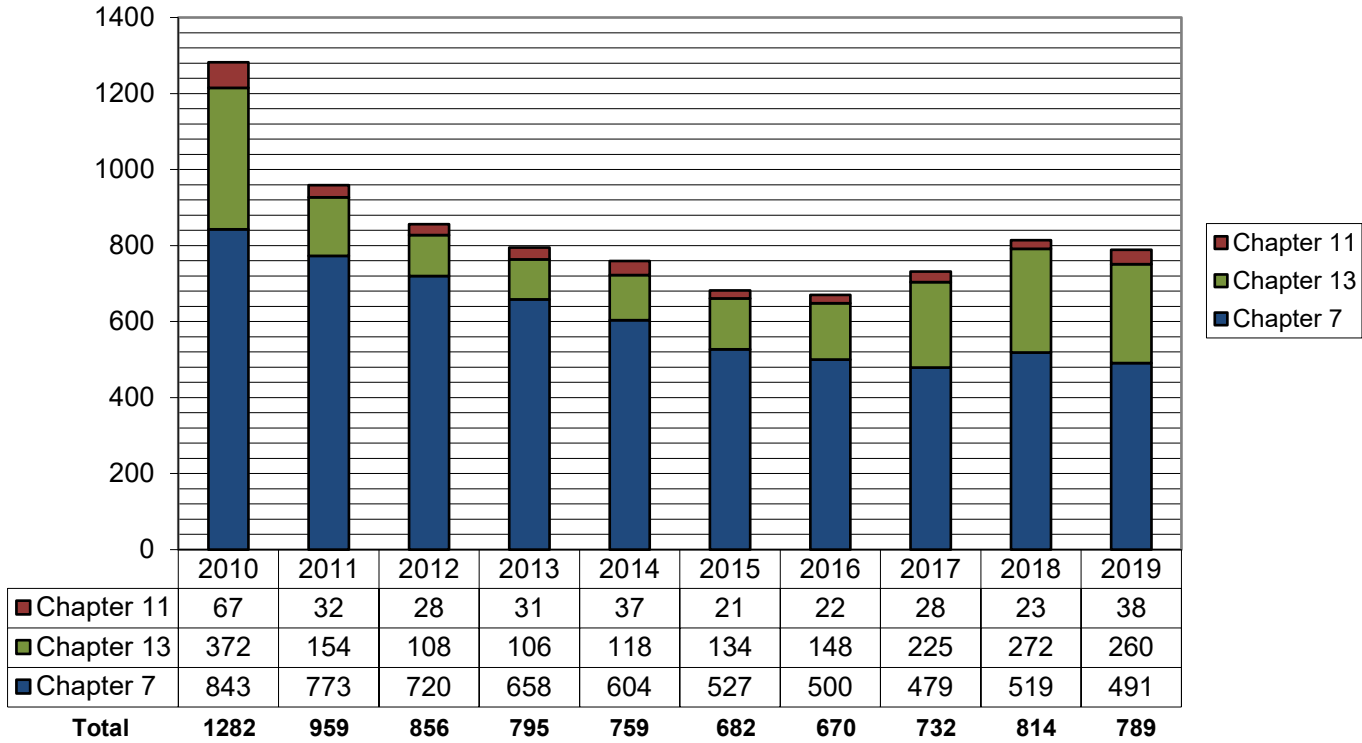
	Month Total	2019 Total	2018 YTD Total
Ch. 7	35	491	491 (+0)
Ch. 13	22	260	253 (+7)
Ch. 11	3	38	22 (+16)
	60	789	766 (+23)

As of November 30, 2019:

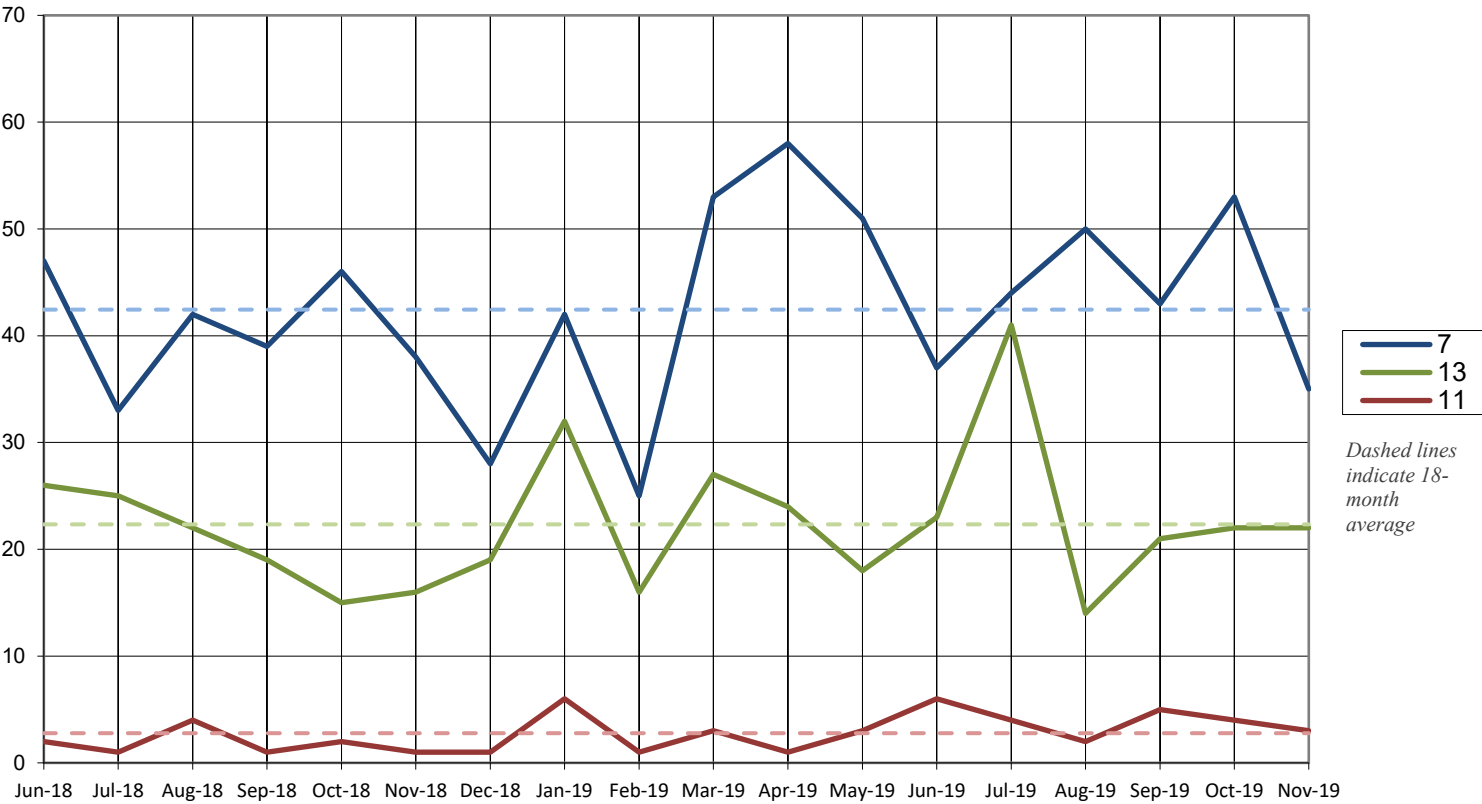
- ◆ The projected total of cases for 2019 is **862**
- ◆ Compared to 2018, filings increased by **3%**
- ◆ An average of **2.4** cases were filed each day



Total Cases Filed per Year

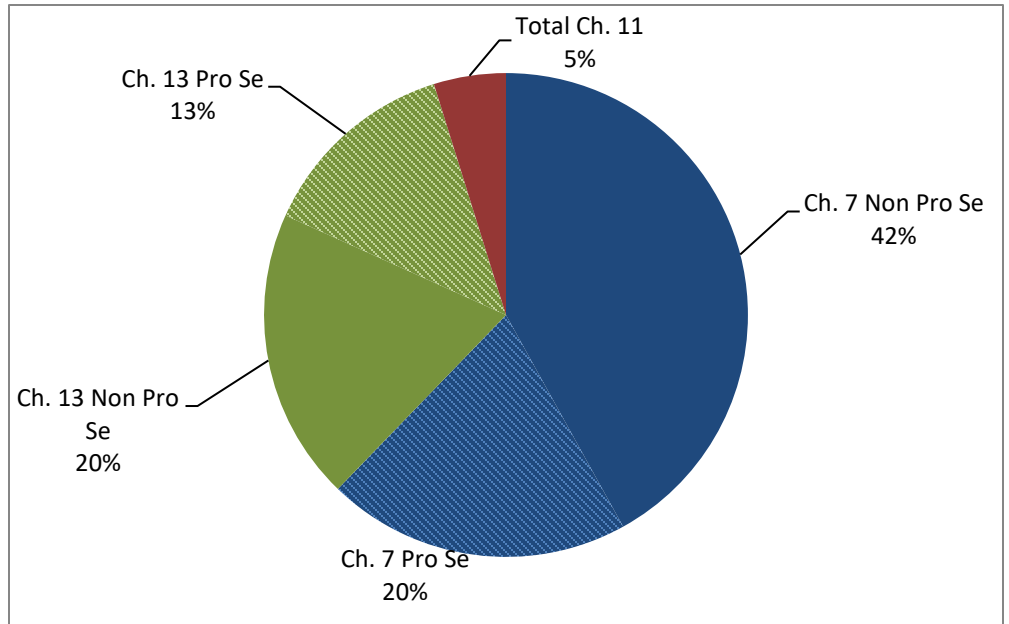


Cases Filed Per Month by Chapter - 18 months



Pro Se Filings 2019

	Total	Pro Se
Ch. 7	491	160
Ch. 13	260	106
Ch. 11	38	5



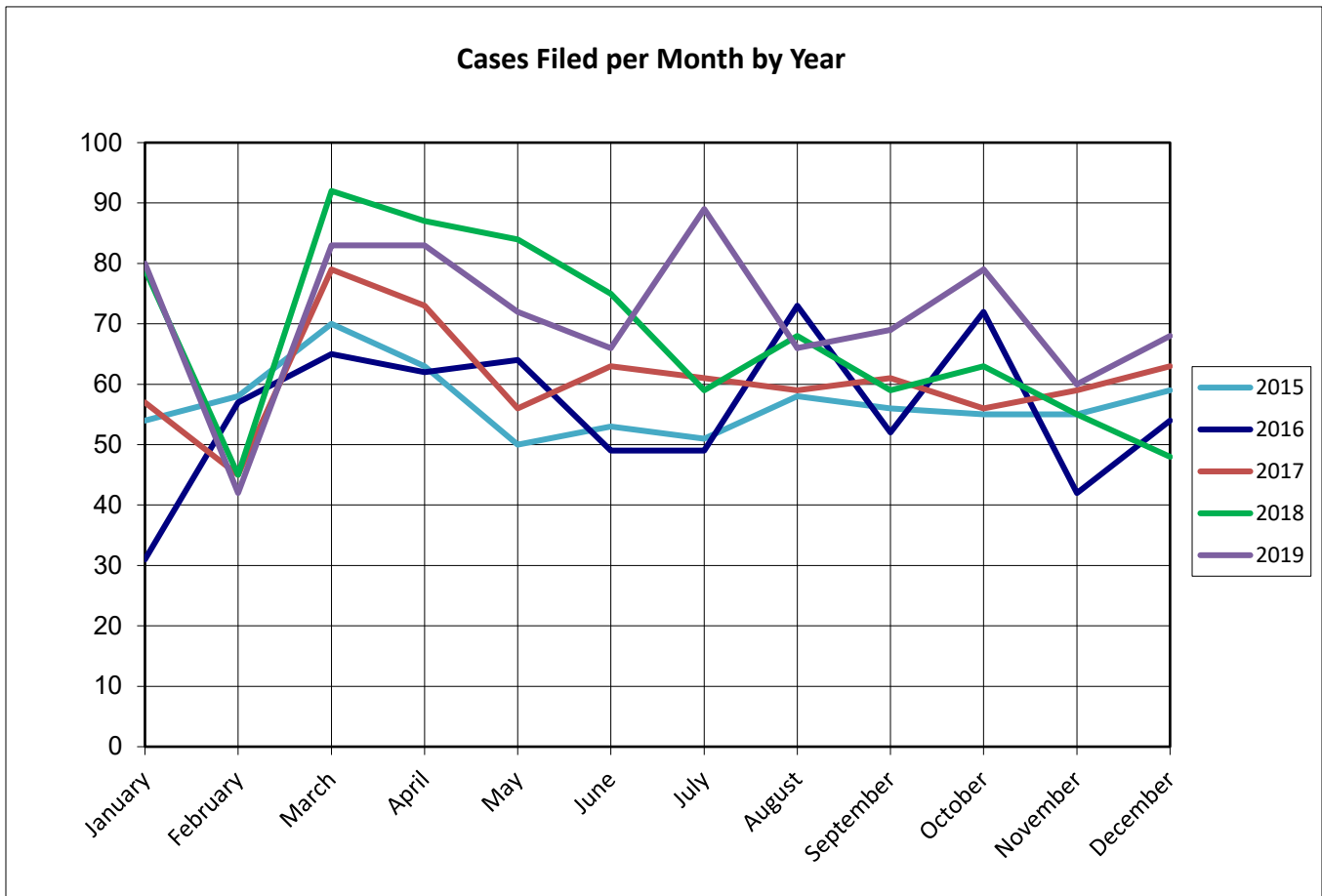
United States Bankruptcy Court for the District of Columbia

Report on Bankruptcy Case Filings December 2019

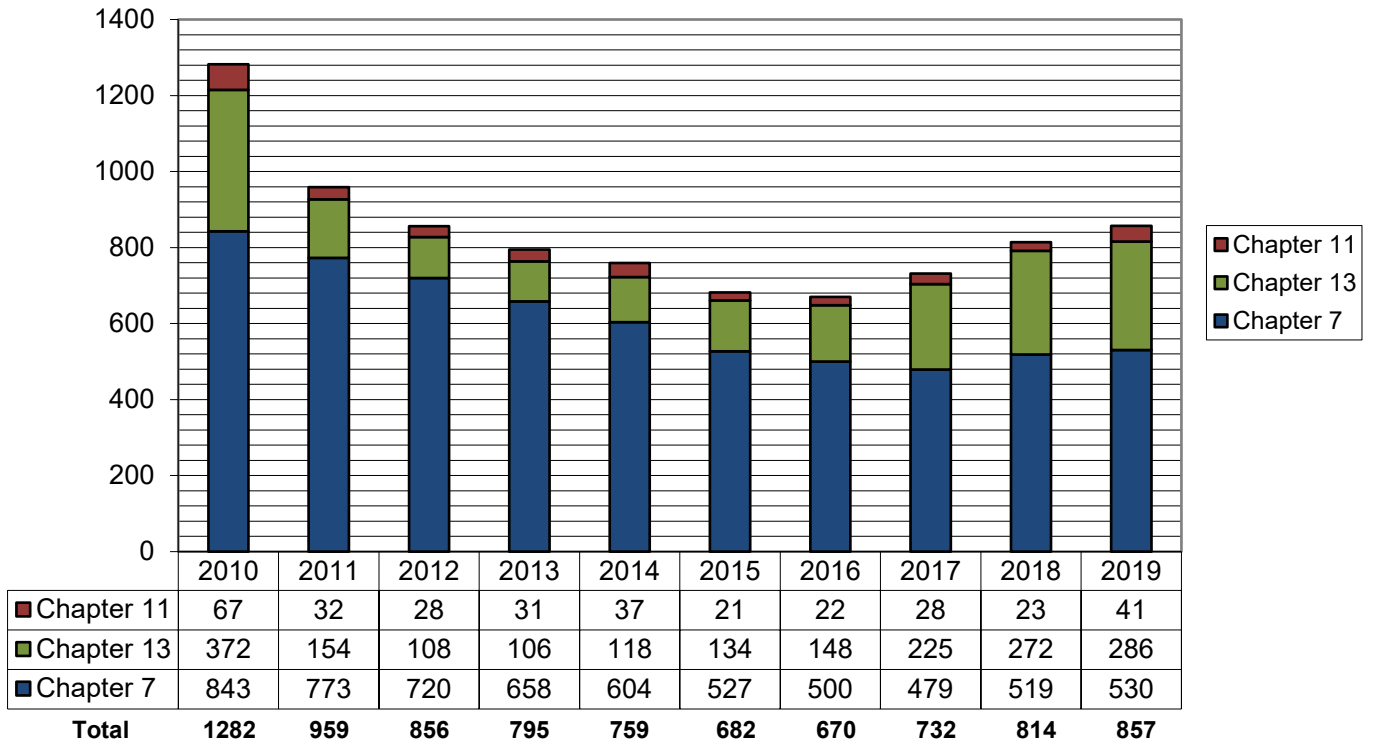
	Month Total	2019 Total	2018 YTD Total
Ch. 7	39	530	519 (+11)
Ch. 13	26	286	272 (+14)
Ch. 11	3	41	23 (+18)
	68	857	814 (+43)

As of December 31, 2019:

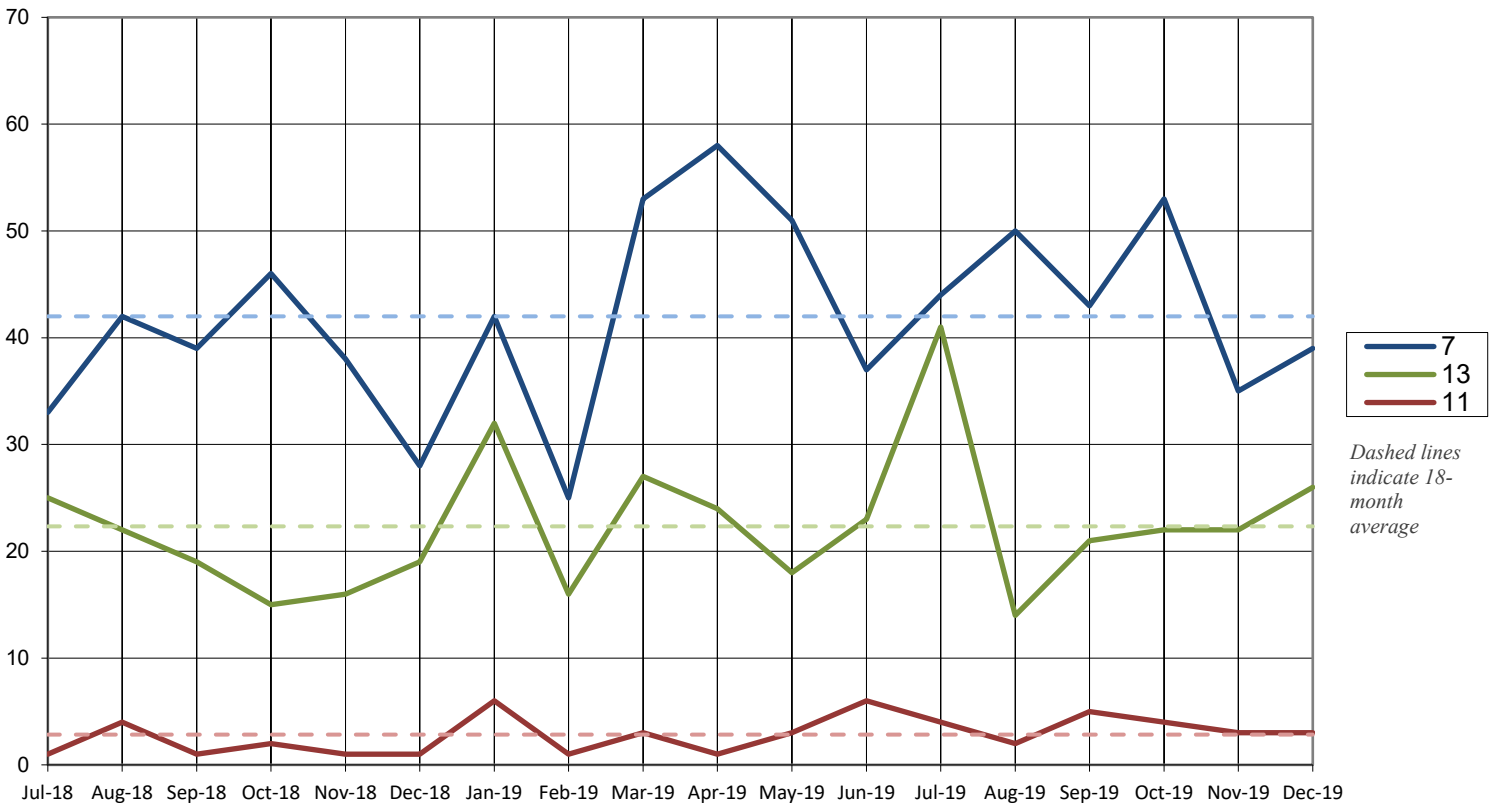
- ◆ The total of cases for 2019 is **857**
- ◆ Compared to 2018, filings increased by **5.3%**
- ◆ An average of **2.3** cases were filed each day



Total Cases Filed per Year



Cases Filed Per Month by Chapter - 18 months



Pro Se Filings 2019

	Total	Pro Se
Ch. 7	530	170
Ch. 13	286	116
Ch. 11	41	5

