

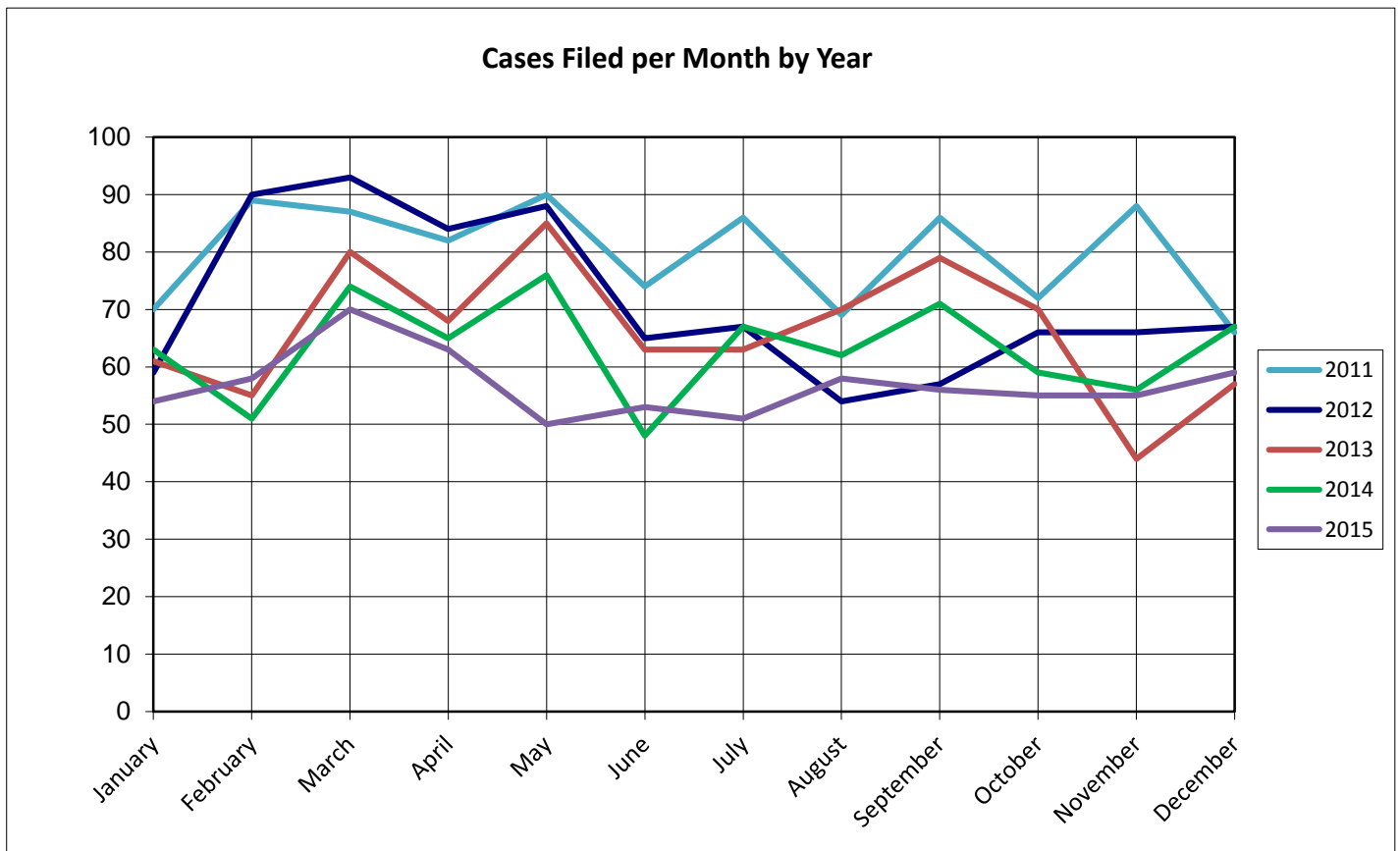
# United States Bankruptcy Court for the District of Columbia

## Report on Bankruptcy Case Filings December 2015

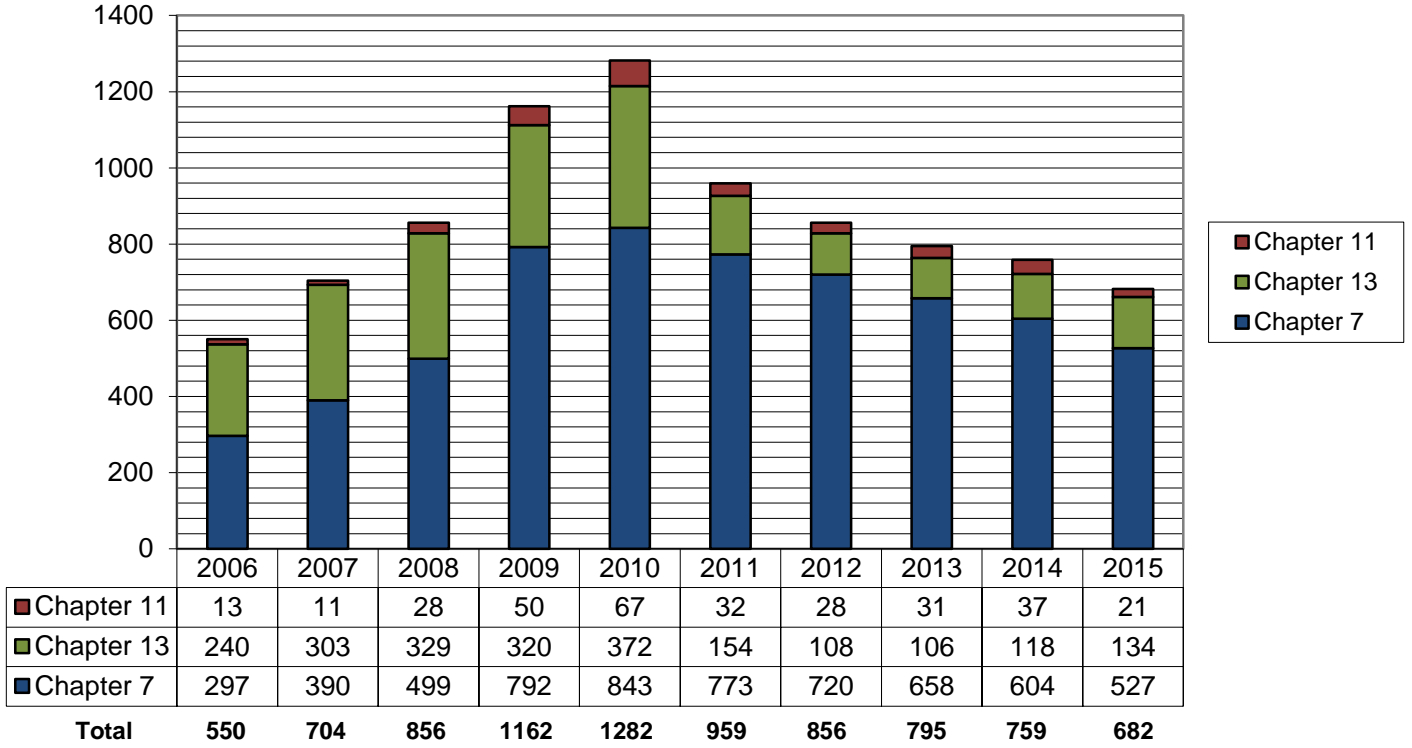
	Month Total	2015 YTD Total	2014 YTD Total
Ch. 7	42	527	604 (-77)
Ch. 13	13	134	118 (+16)
Ch. 11	4	21	37 (-16)
	59	682	759 (-77)

As of December 31, 2015,

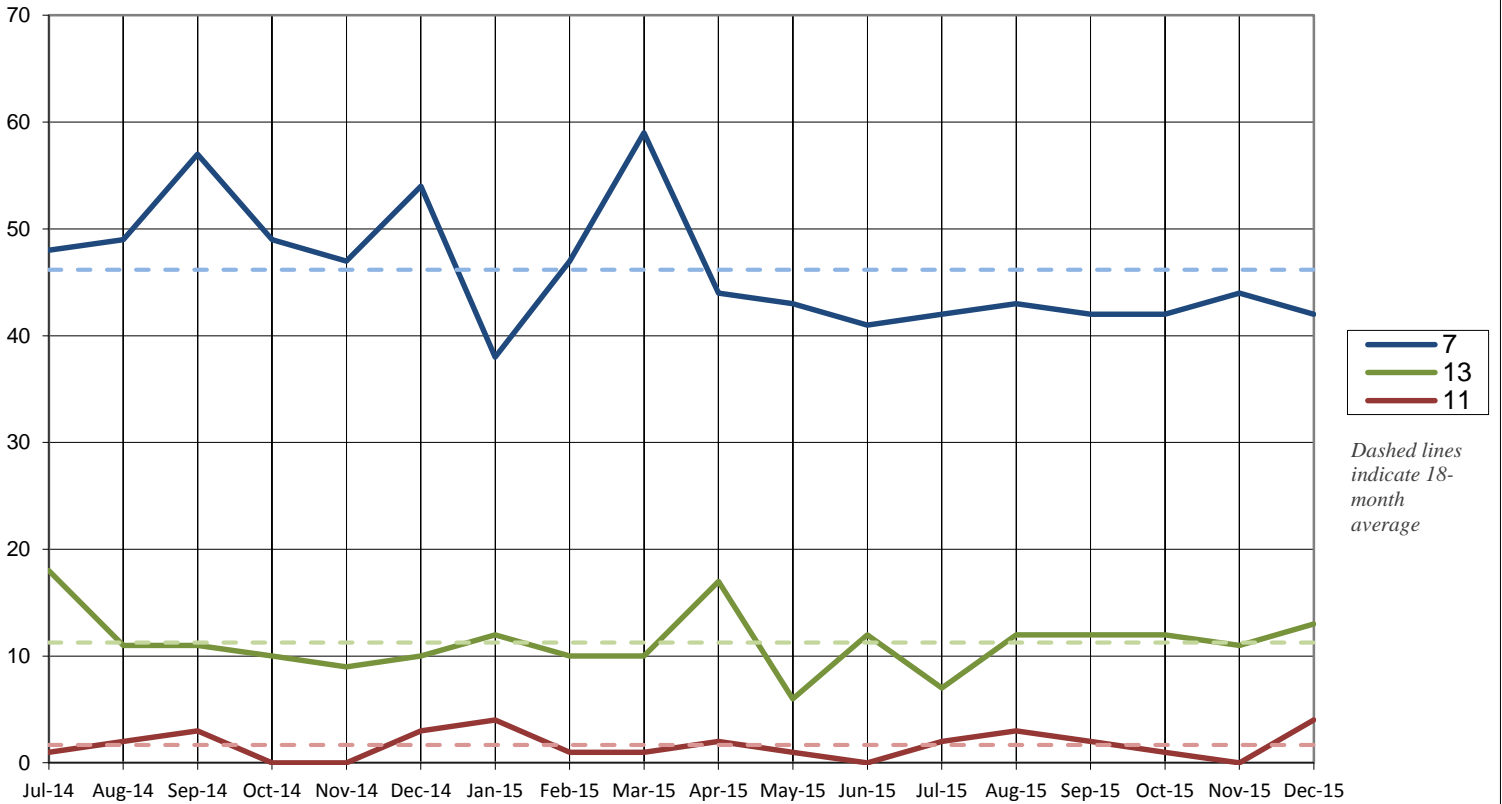
- ◆ The total cases for 2015 is **682**
- ◆ Compared to 2014, filings decreased by **10.1%**
- ◆ An average of **1.9** cases were filed each day



### Total Cases Filed per Year



### Cases Filed Per Month by Chapter - 18 months



### Pro Se Filings through December 2015

	Total	Pro Se
Ch. 7	527	139
Ch. 13	134	32
Ch. 11	21	4

