

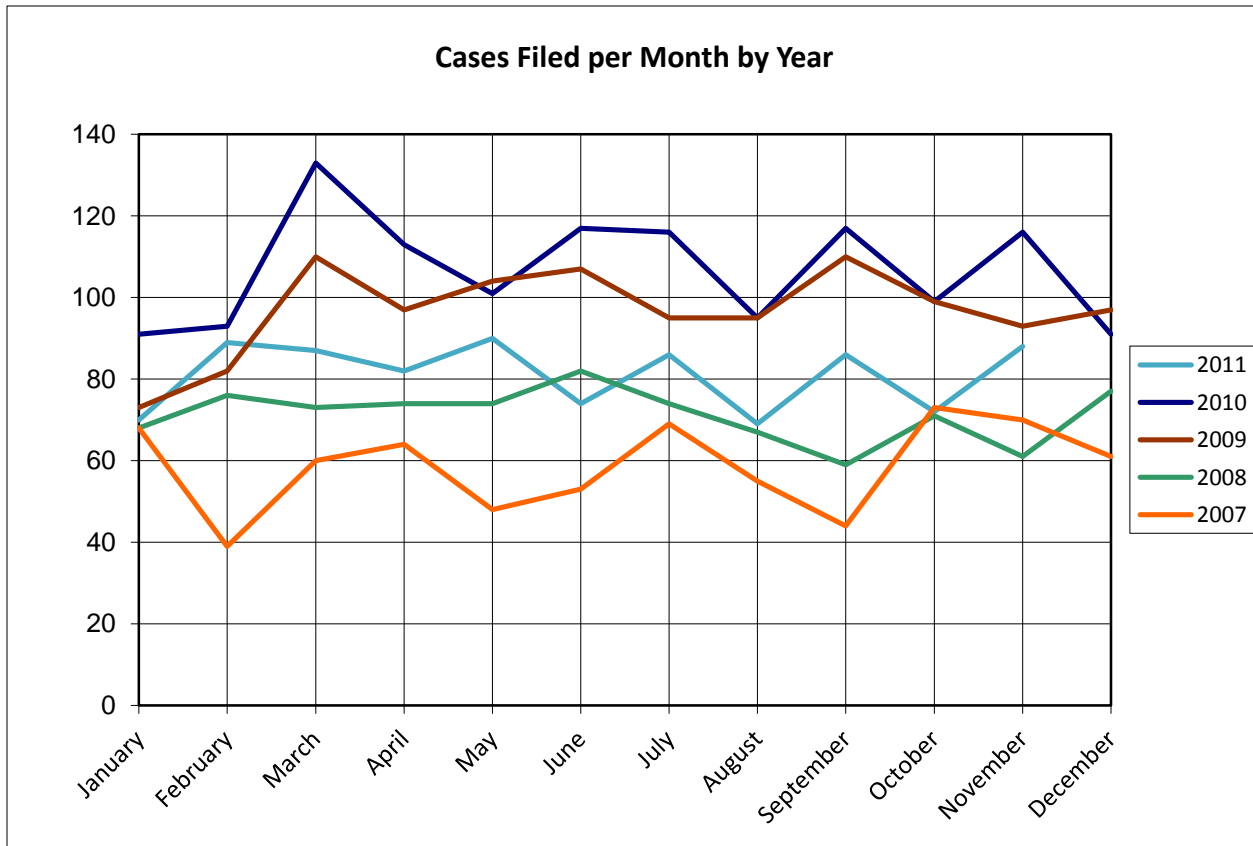
United States Bankruptcy Court for the District of Columbia

Report on Bankruptcy Case Filings January – November 2011

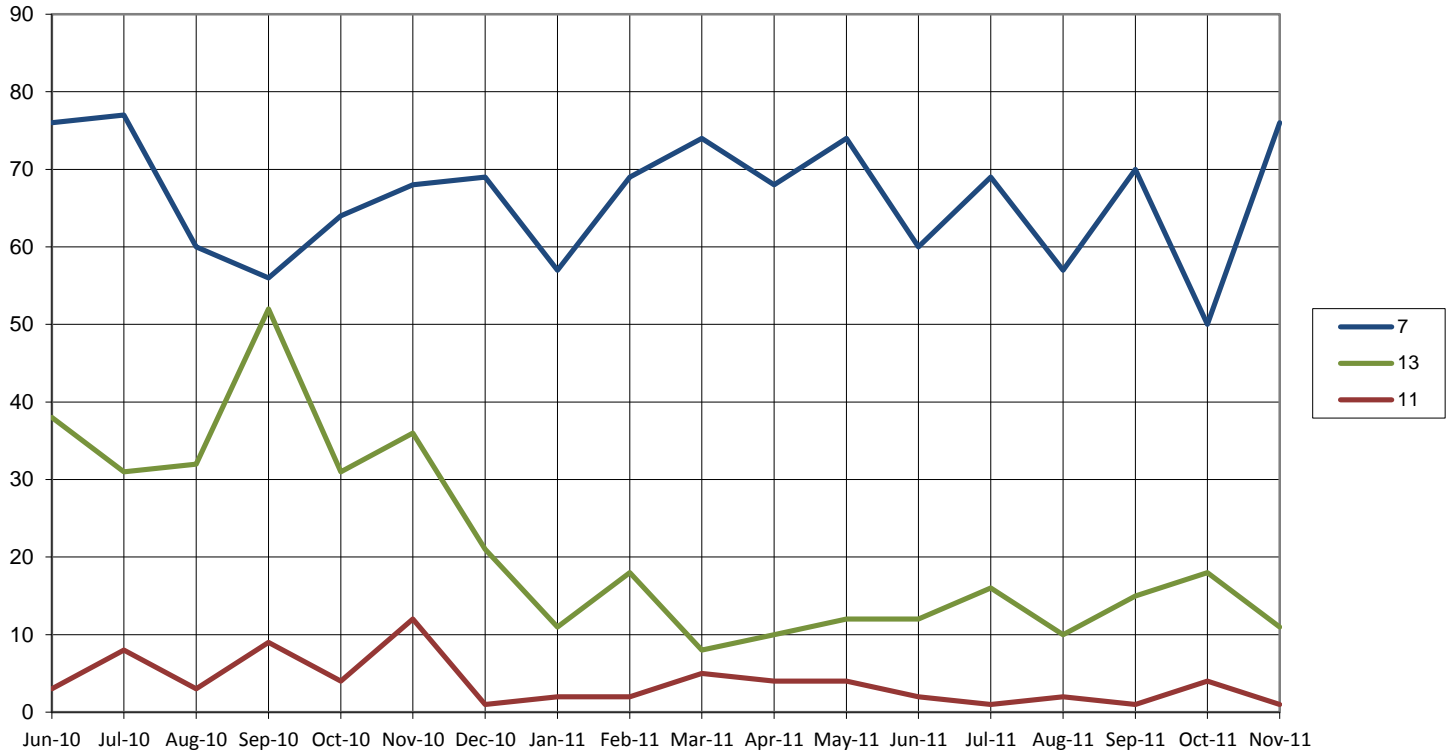
| | Month Total | Year-to-Date |
|--------|-------------|--------------|
| Ch. 7 | 76 | 724 |
| Ch. 13 | 11 | 141 |
| Ch. 11 | 1 | 28 |
| | 88 | 893 |

As of November 30, 2011...

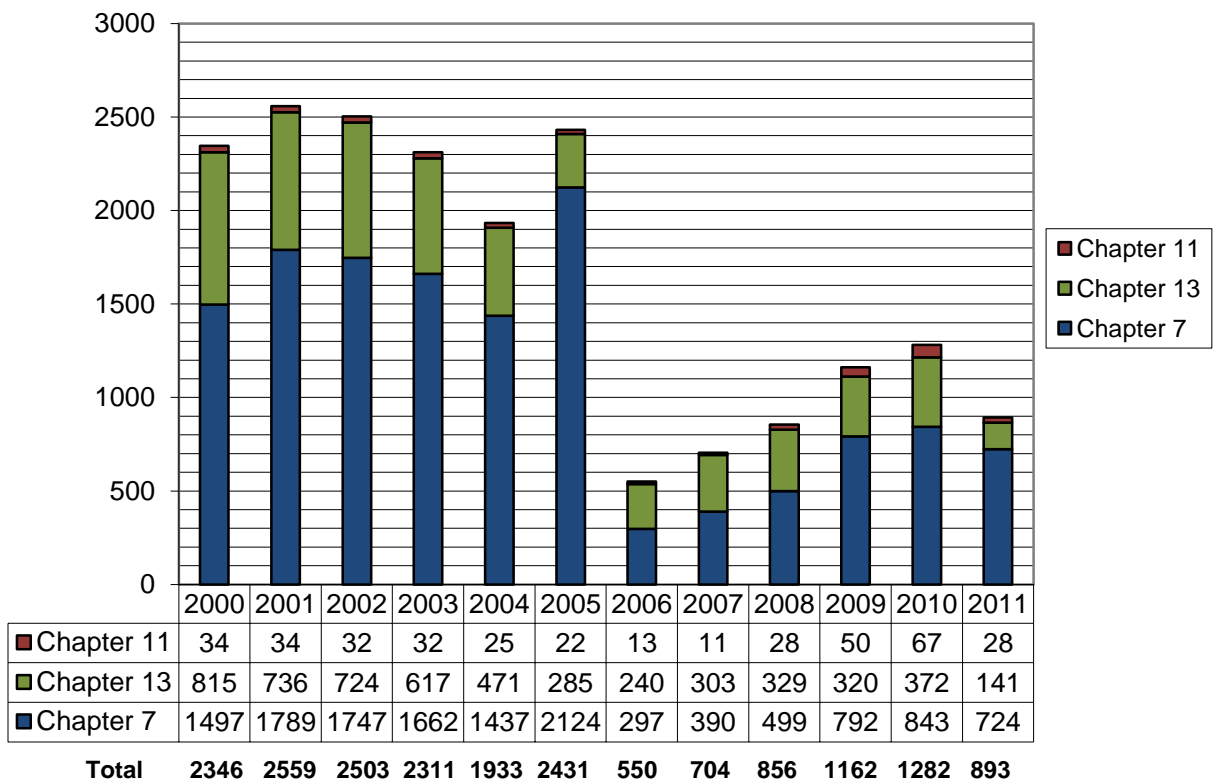
- ◆ The projected total cases for 2011 is **976**
- ◆ Compared to 2010, filings decreased by **25.1%**
- ◆ An average of **2.67** cases were filed each day



Cases Filed Per Month by Chapter - 18 months



Total Cases Filed per Year



Pro Se Filings January – November 2011

| | Total | Pro Se |
|--------|-------|--------|
| Ch. 7 | 724 | 107 |
| Ch. 13 | 141 | 17 |
| Ch. 11 | 27 | 1 |

