

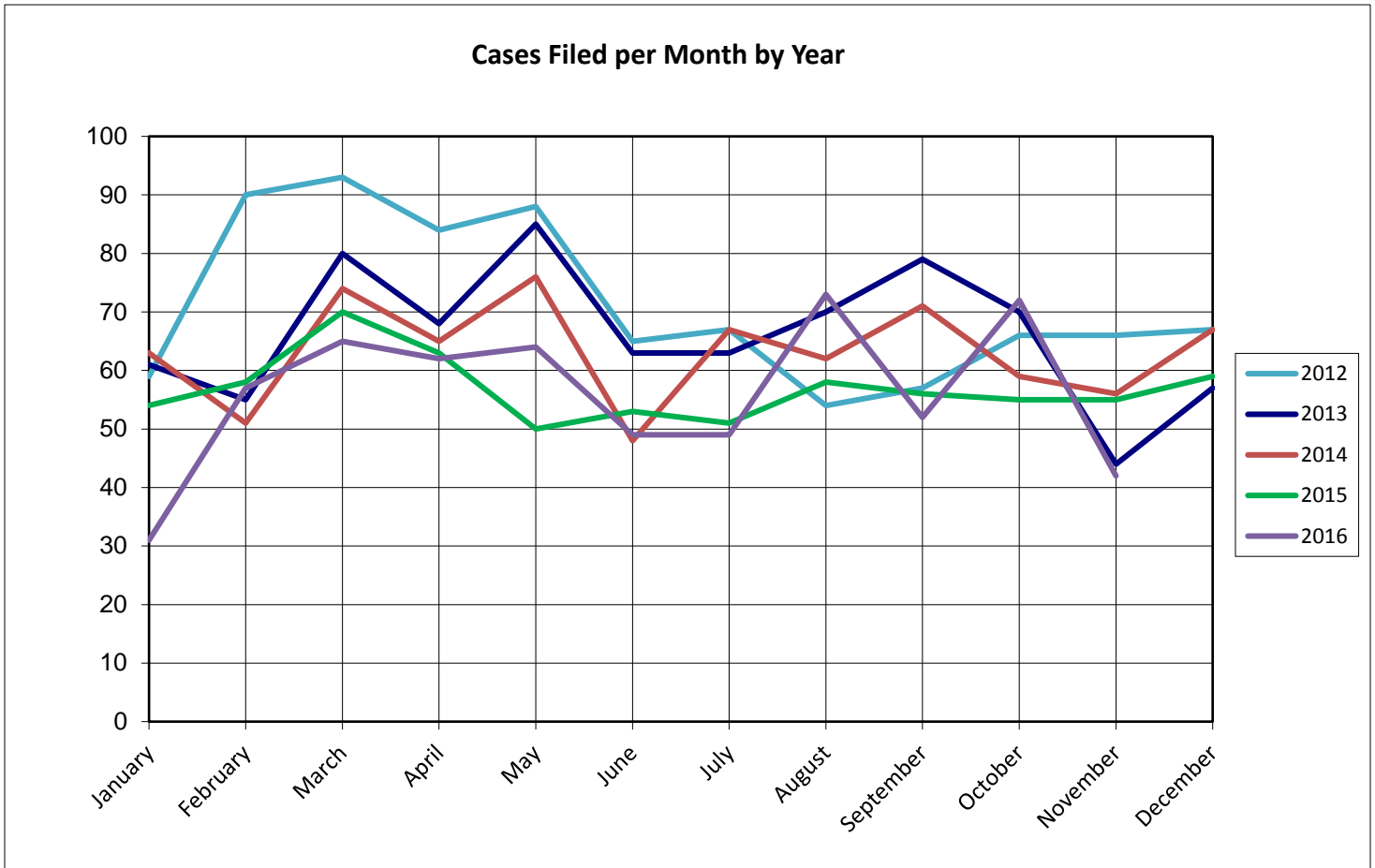
United States Bankruptcy Court for the District of Columbia

Report on Bankruptcy Case Filings November 2016

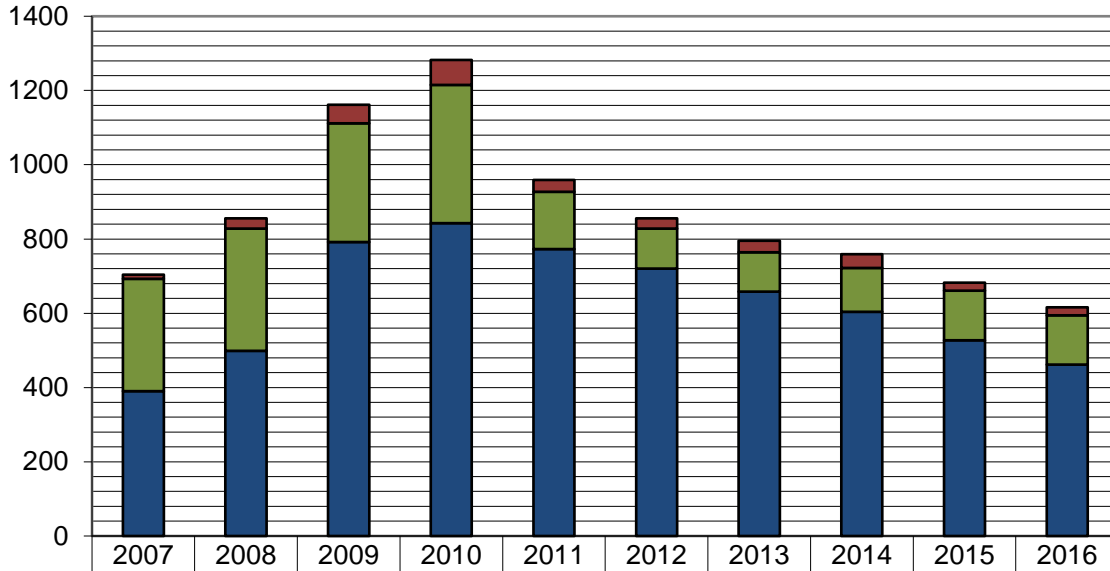
	Month Total	2016 YTD Total	2015 YTD Total
Ch. 7	26	462	485 (-23)
Ch. 13	15	132	121 (+11)
Ch. 11	1	22	17 (+5)
	42	616	623 (-7)

As of November 30, 2016:

- ◆ The projected total cases for 2016 is **673**
- ◆ Compared to 2015, filings decreased by **1.1%**
- ◆ An average of **1.8** cases were filed each day



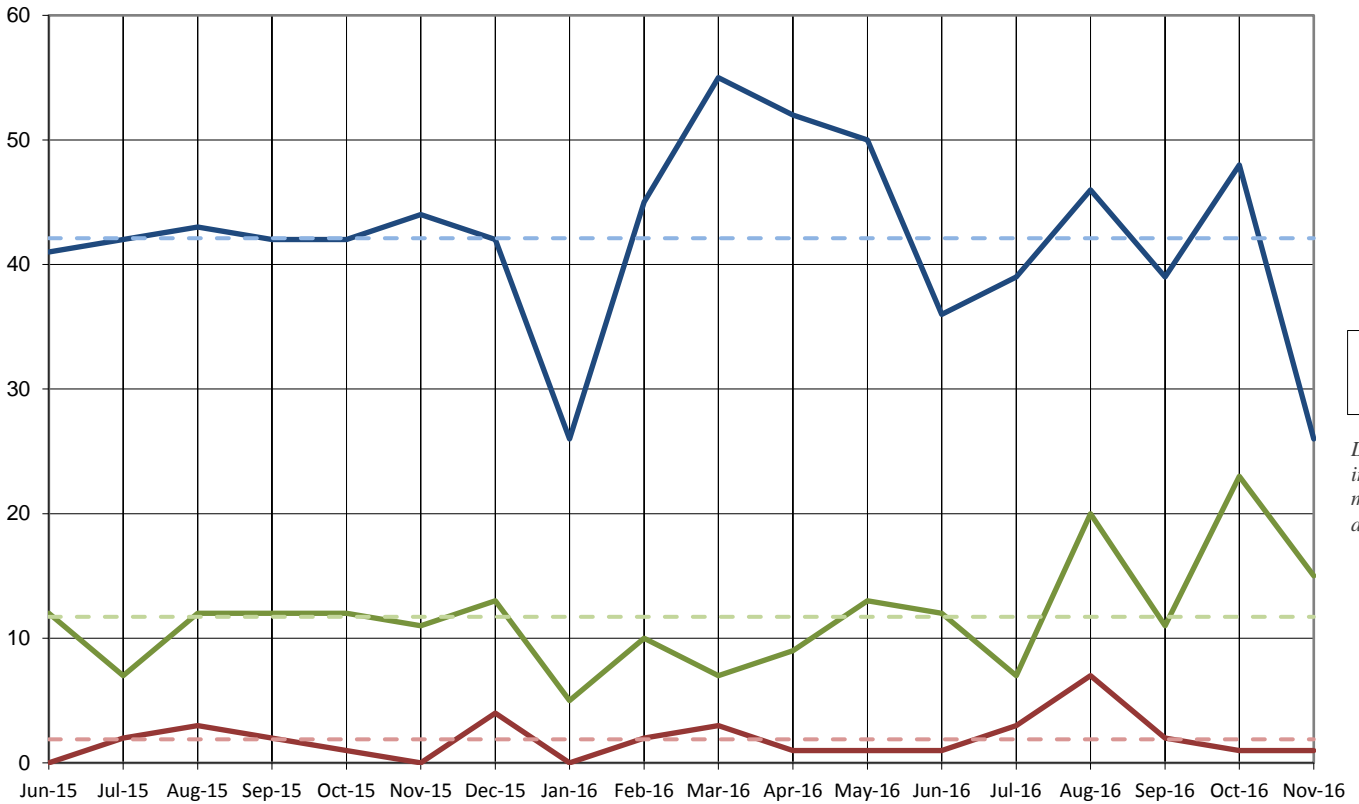
Total Cases Filed per Year



■ Chapter 11
■ Chapter 13
■ Chapter 7

	2007	2008	2009	2010	2011	2012	2013	2014	2015	2016
■ Chapter 11	11	28	50	67	32	28	31	37	21	22
■ Chapter 13	303	329	320	372	154	108	106	118	134	132
■ Chapter 7	390	499	792	843	773	720	658	604	527	462
Total	704	856	1162	1282	959	856	795	759	682	616

Cases Filed Per Month by Chapter - 18 months



— 7
— 13
— 11

Dashed lines indicate 18-month average

Pro Se Filings through November 2016

	Total	Pro Se
Ch. 7	462	124
Ch. 13	132	45
Ch. 11	22	2

