

United States Bankruptcy Court for the District of Columbia

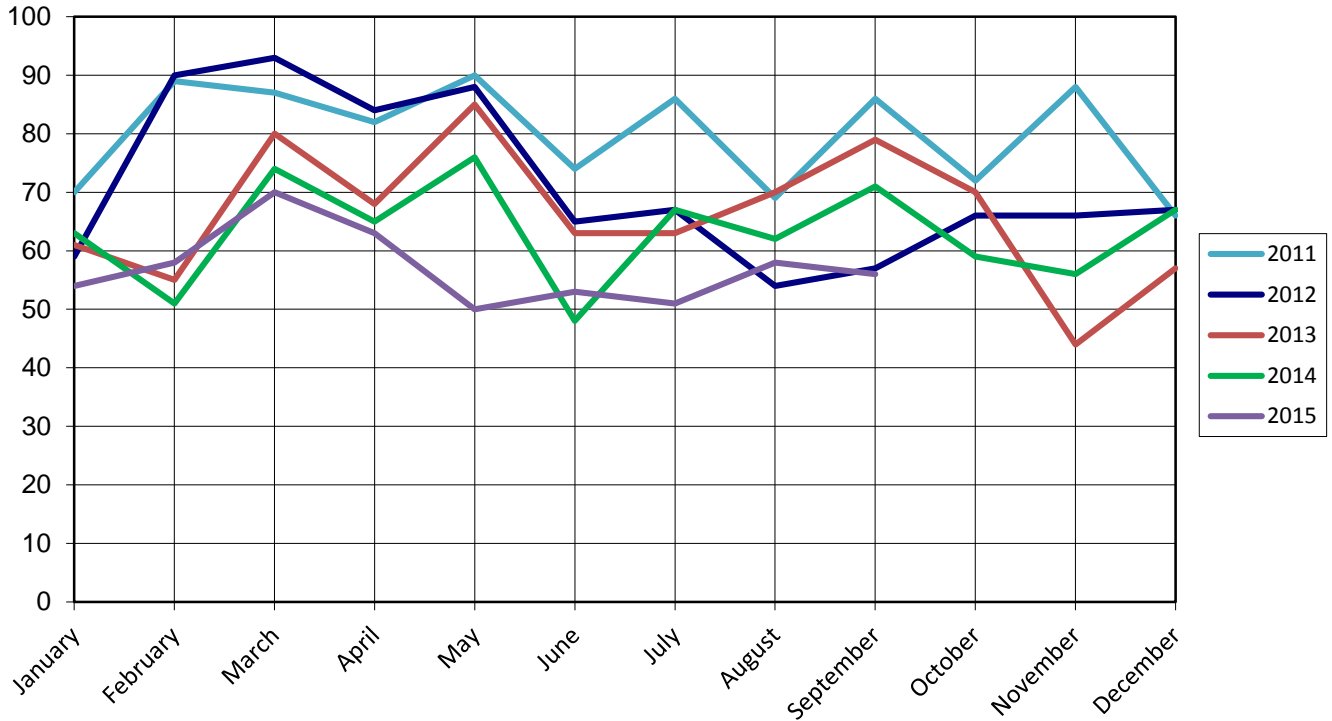
Report on Bankruptcy Case Filings September 2015

	Month Total	2015 YTD Total	2014 YTD Total
Ch. 7	42	399	454 (-55)
Ch. 13	12	98	89 (+9)
Ch. 11	2	16	34 (-18)
	58	513	577 (-64)

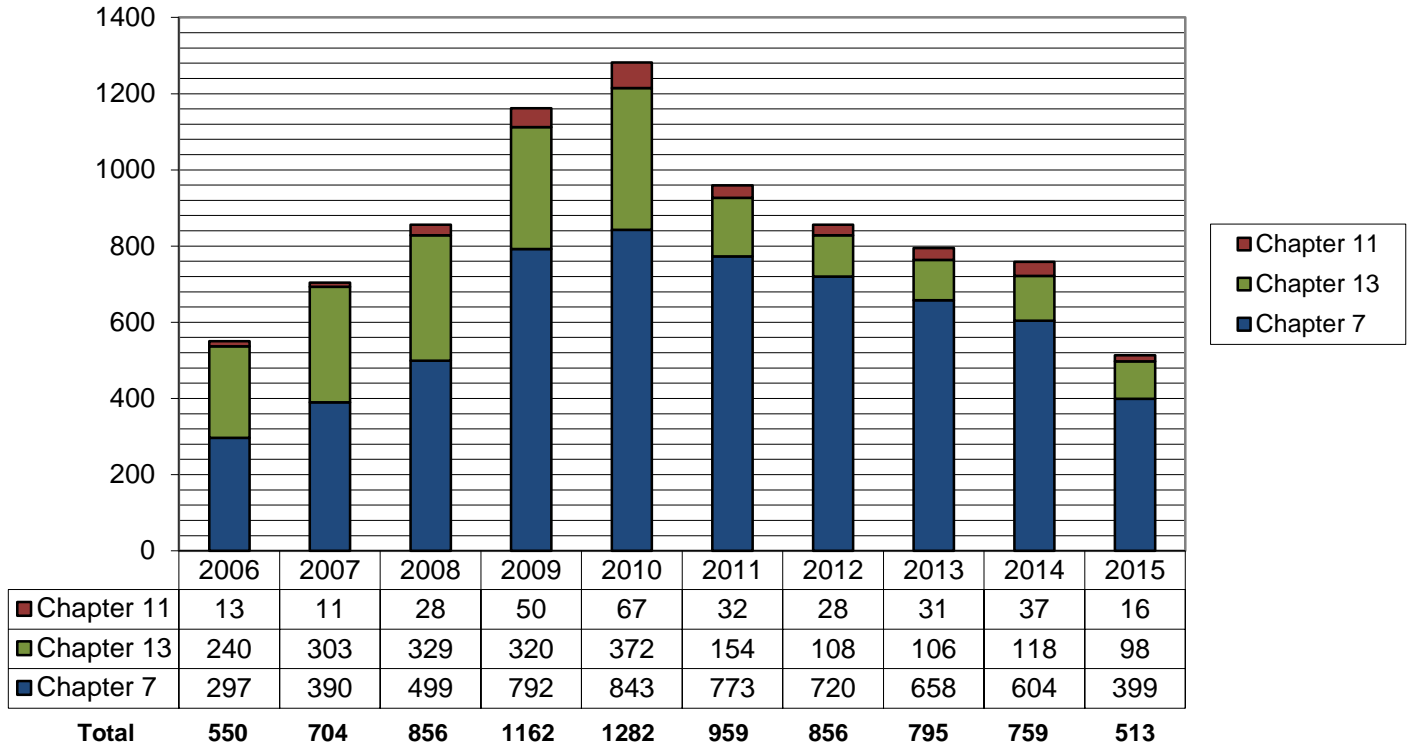
As of September 30, 2015

- ◆ The projected total cases for 2015 is **686**
- ◆ Compared to 2013, filings decreased by **11.1%**
- ◆ An average of **1.9** cases were filed each day

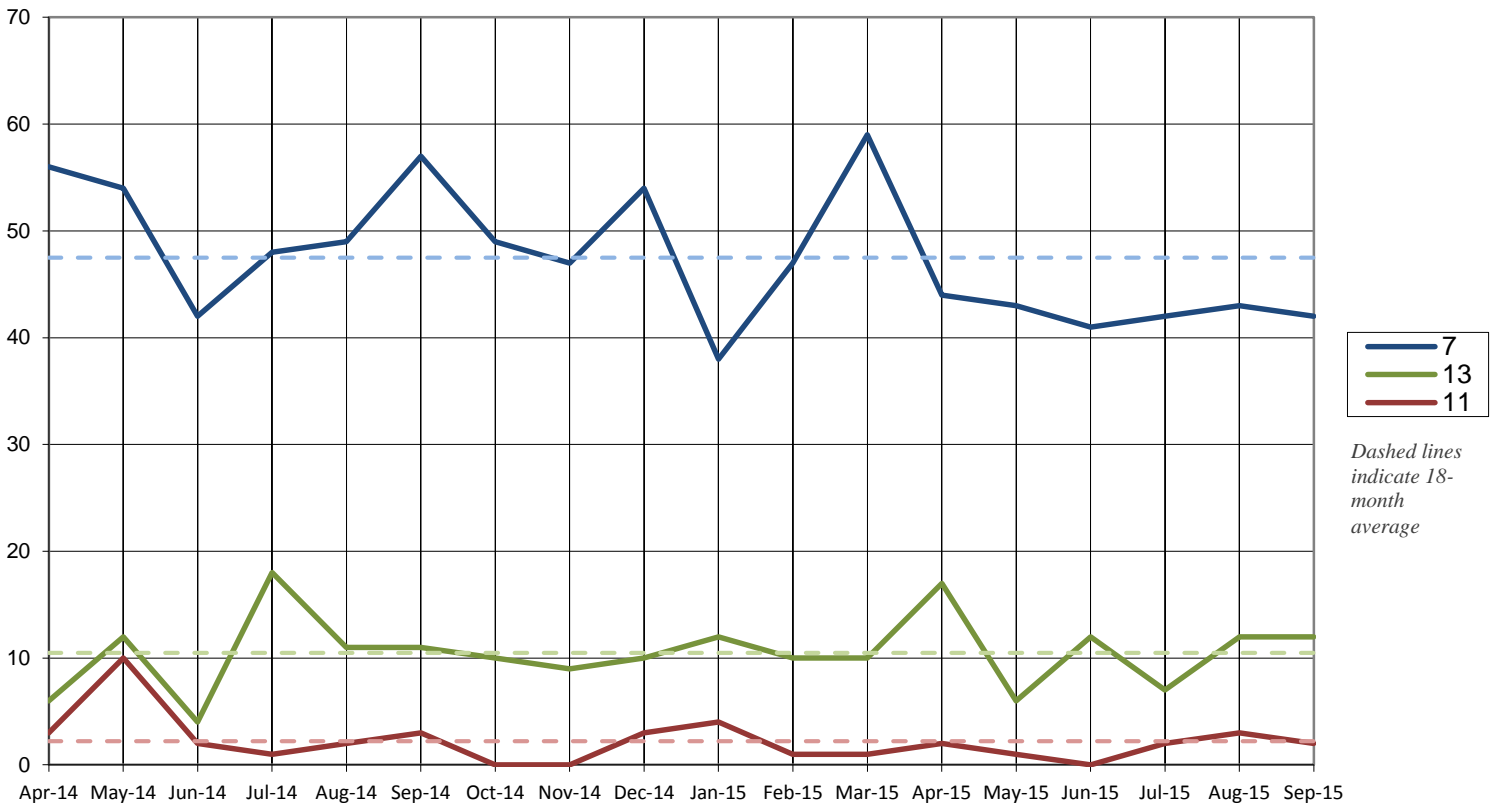
Cases Filed per Month by Year



Total Cases Filed per Year



Cases Filed Per Month by Chapter - 18 months



Pro Se Filings through September 2015

	Total	Pro Se
Ch. 7	399	100
Ch. 13	98	24
Ch. 11	16	4

